


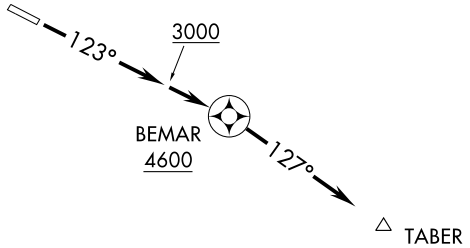
BEMAR ONE DEPARTURE (RNAV)

AWOS-3
 133.325
 CTAF
 123.05
 ROANOKE DEP CON
 126.9 339.8
 ROANOKE CLNC DEL
 124.85

ROANOKE
 ROA 

WOODRUM
 ODR 

PULASKI
 PSK 



NOTE: GPS required.
 NOTE: RNAV-1.
 NOTE: Radar required.

TAKEOFF OBSTACLE NOTES:

Rwy 12: Trees beginning 19' from DER, 418' left of centerline, up to 100' AGL/2453' MSL.
 Trees beginning 242' from DER, 151' right of centerline, up to 100' AGL/2279' MSL.

TAKEOFF MINIMUMS:

Rwy 30: NA-ATC.
 Rwy 12: 400-1¼ with minimum climb of 250' per NM to 4600
 or standard with minimum climb of 500' per NM to 3000.

NOTE: Chart not to scale.



DEPARTURE ROUTE DESCRIPTION

TAKEOFF RUNWAY 12: Climb heading 123° to 3000, then direct BEMAR, cross BEMAR at or above 4600, then fly heading 127°, maintain 6000, expect radar vectors and clearance to filed altitude/flight level 10 minutes after departure.

NE-3, 31 MAY 2012 to 28 JUN 2012

NE-3, 31 MAY 2012 to 28 JUN 2012

(SETHY3.SETHY) 11237

SL-5475 (FAA)


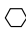
BLACKSBURG/VIRGINIA TECH/MONTGOMERY EXECUTIVE (BCB)

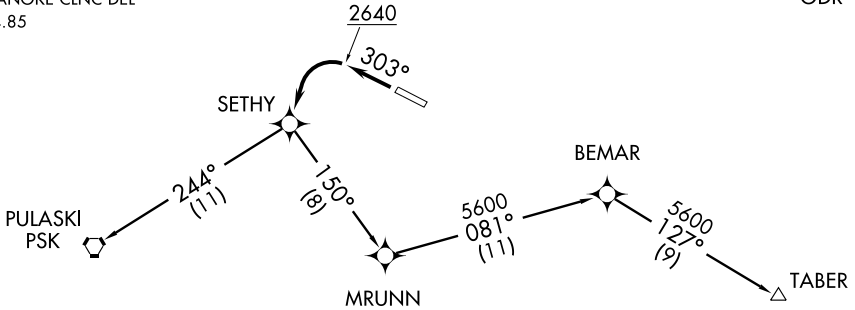
SETHY THREE DEPARTURE (RNAV)

BLACKSBURG, VIRGINIA

AWOS-3
133.325
CTAF
123.05
ROANOKE DEP CON
126.9 339.8
ROANOKE CLNC DEL
124.85

NOTE: Aircraft on TABER transition,
do not exceed 220 KIAS until
passing SETHY.

ROANOKE
ROA 

WOODRUM
ODR



NOTE: GPS Required.
NOTE: Radar Required.
NOTE: RNAV-1.
NOTE: When in Radar contact expect vectors to filed/assigned route.

TAKEOFF MINIMUMS:

Rwy 12: NA-ATC.
Rwy 30: Standard with minimum climb of 300' per NM to 2640.

TAKEOFF OBSTACLE NOTES:

Rwy 30: Rising terrain, trees and poles beginning 3' from DER, 273' right of centerline, up to 45' AGL/2165' MSL. Rising terrain, trees, and poles beginning 90' from DER, 187' left of centerline, up to 100' AGL/ 2222' MSL. Vehicle on road beginning 567' from DER left and right of centerline up to 15' AGL/ 2146' MSL. Fence beginning 697' from DER, left and right of centerline, up to 10' AGL/ 2136' MSL.

NOTE: Chart not to scale.

DEPARTURE ROUTE DESCRIPTION

TAKEOFF RUNWAY 30: Climb heading 303° to 2640, then left turn direct SETHY, Thence

. . . .Via transition. Maintain 6000, expect clearance to filed altitude/flight level 10 minutes after departure.

PULASKI TRANSITION (SETHY3.PSK):
TABER TRANSITION (SETHY3.TABER):

SETHY THREE DEPARTURE (RNAV)

(SETHY3.SETHY) 11237

BLACKSBURG, VIRGINIA
BLACKSBURG/VIRGINIA TECH/MONTGOMERY EXECUTIVE (BCB)

NE-3, 31 MAY 2012 to 28 JUN 2012

NE-3, 31 MAY 2012 to 28 JUN 2012

LOC/DME I-BCB 109.1 Chan 28	APP CRS 123°	Rwy Idg TDZE 4539 2113	Apt Elev 2132
------------------------------------------	------------------------	--------------------------------------------	-------------------------

LOC/DME RWY 12

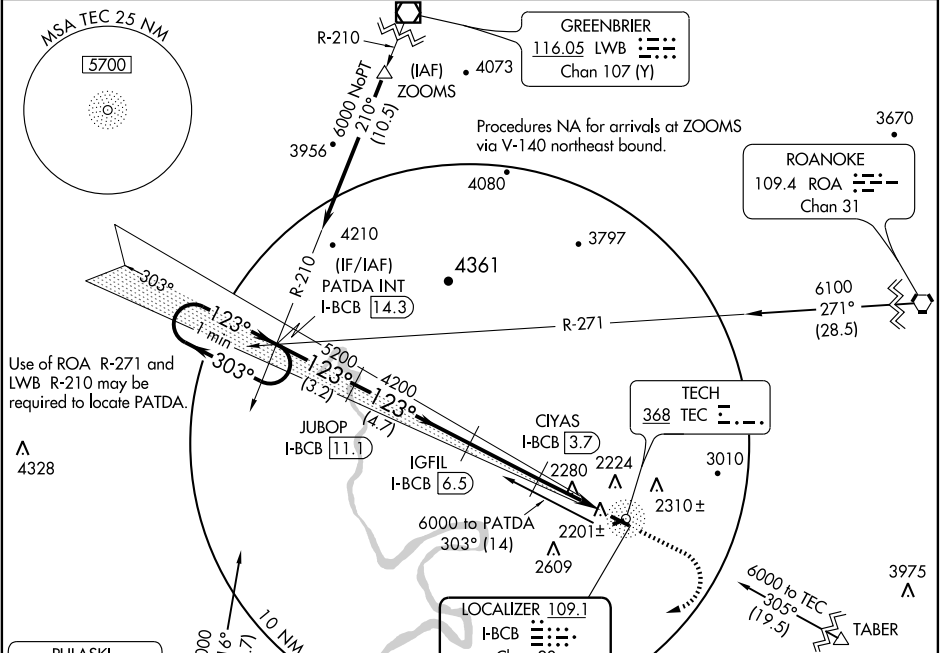
BLACKSBURG/VIRGINIA TECH/MONTGOMERY EXECUTIVE (BCB)

NA Inoperative table does not apply.
When VGSI inop, procedure NA at night.
Visibility reduction by helicopters NA.

ODALS

MISSED APPROACH: Climb to 2700 then climbing right turn to 6000 direct PSK VORTAC and hold.

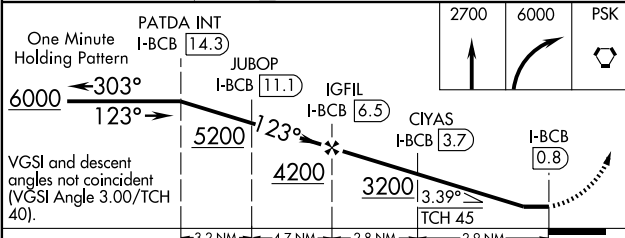
AWOS-3 133.325	ROANOKE APP CON 126.9 339.8	ROANOKE CLNC DEL 124.85	UNICOM 123.05 (CTAF)
--------------------------	---------------------------------------	-----------------------------------	--------------------------------



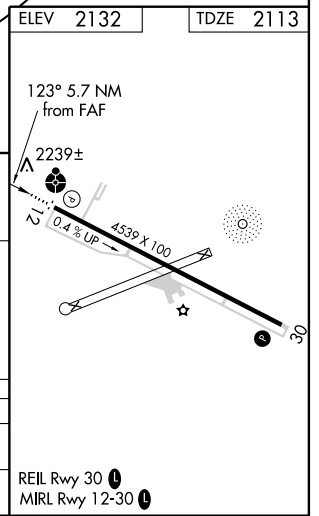
NE-3, 31 MAY 2012 to 28 JUN 2012

NE-3, 31 MAY 2012 to 28 JUN 2012

ELEV 2132	TDZE 2113
-----------	-----------



CATEGORY	A	B	C	D
S-12	2540-1	427 (500-1)	2540-1¼ 427 (500-1¼)	NA
CIRCLING	2800-1	668 (700-1)	2800-1¾ 668 (700-1¾)	NA

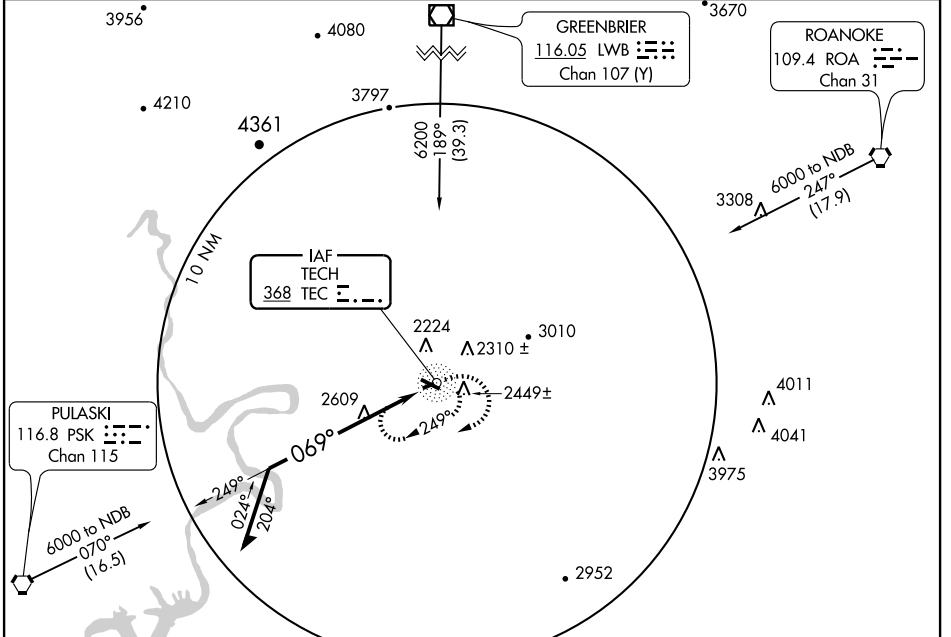


NDB TEC 368	APP CRS 069°	Rwy Idg TDZE Apt Elev	N/A N/A 2132
-----------------------	------------------------	-----------------------------	---------------------------

NA When local altimeter setting not received, use Dublin altimeter setting and increase all MDA 40 feet.

MISSED APPROACH: Climbing right turn to 6000 in TEC NDB holding pattern.

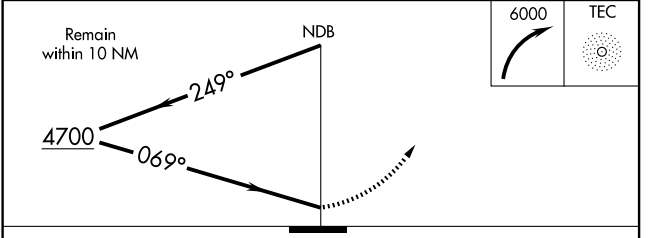
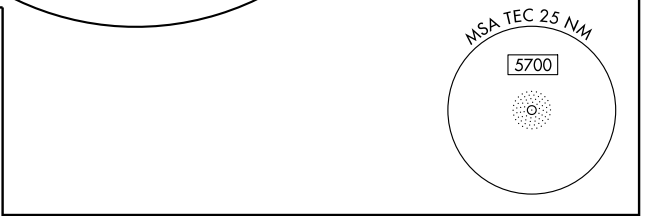
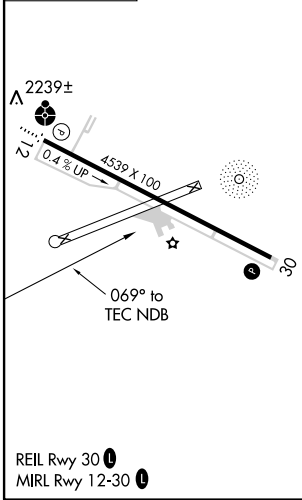
AWOS-3 133.325	ROANOKE APP CON 126.9 339.8	ROANOKE CLNC DEL 124.85	UNICOM 123.05 (CTAF)
--------------------------	---------------------------------------	-----------------------------------	--------------------------------



NE-3, 31 MAY 2012 to 28 JUN 2012

NE-3, 31 MAY 2012 to 28 JUN 2012

ELEV **2132**



CATEGORY	A	B	C	D
CIRCLING	3200-1¼ 1068 (1100-1¼)	3200-1½ 1068 (1100-1½)	3200-3 1068 (1100-3)	NA

BLACKSBURG, VIRGINIA

AL-5475 (FAA)

RNAV (GPS) RWY 30

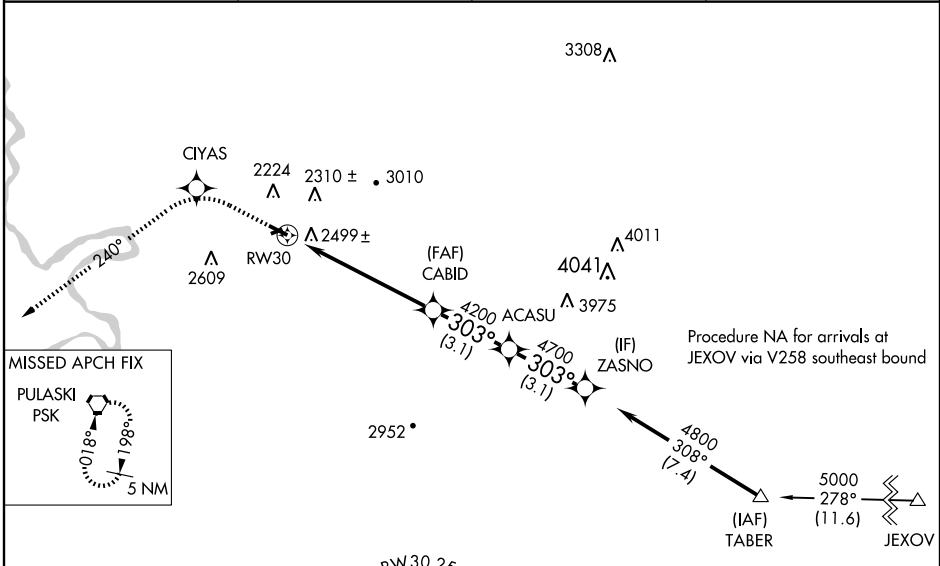
BLACKSBURG/VIRGINIA TECH/MONTGOMERY EXECUTIVE (BCB)

APP CRS	Rwy Idg	4539
303°	TDZE	2132
	Apt Elev	2132

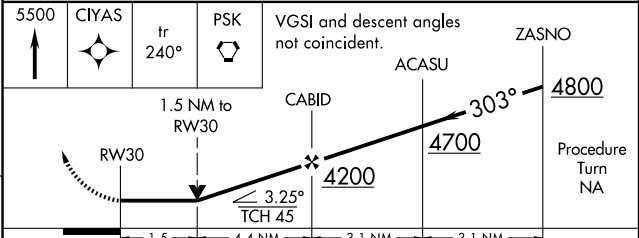
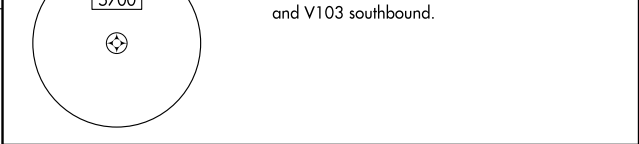
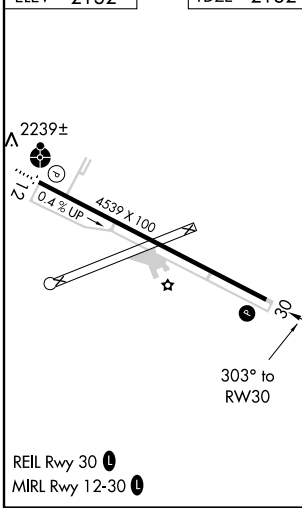
⚠ DME/DME RNP-0.3 NA.
 When local altimeter setting not received, use Dublin altimeter setting and increase all MDA 40 feet and Circling Cat C visibility ¼ mile.
 VDP NA when using Dublin altimeter setting.

MISSED APPROACH: Climb to 5500 direct CIYAS and via 240° track to PSK VORTAC and hold.

AWOS-3 133.325	ROANOKE APP CON 126.9 339.8	ROANOKE CLNC DEL 124.85	UNICOM 123.05 (CTAF) 0
--------------------------	---------------------------------------	-----------------------------------	----------------------------------



ELEV	2132	TDZE	2132
------	------	------	------



CATEGORY	A	B	C	D
LNAV MDA	2760-1	628 (700-1)	2760-1¾ 628 (700-1¾)	NA
CIRCLING	2800-1	668 (700-1)	2800-1¾ 668 (700-1¾)	NA

BLACKSBURG, VIRGINIA
 Orig 11069

BLACKSBURG/VIRGINIA TECH/MONTGOMERY EXECUTIVE (BCB)
 37°12'N - 80°24'W

RNAV (GPS) RWY 30

NE-3, 31 MAY 2012 to 28 JUN 2012

NE-3, 31 MAY 2012 to 28 JUN 2012



INSTRUMENT APPROACH PROCEDURE CHARTS

A IFR ALTERNATE AIRPORT MINIMUMS

Standard alternate minimums for non precision approaches are 800-2 (NDB, VOR, LOC, TACAN, LDA, VORTAC, VOR/DME, ASR or WAAS LNAV); for precision approaches 600-2 (ILS or PAR). Airports within this geographical area that require alternate minimums other than standard or alternate minimums with restrictions are listed below. NA - means alternate minimums are not authorized due to unmonitored facility or absence of weather reporting service. Civil pilots see FAR 91. IFR Alternate Airport Minimums: Ceiling and Visibility Minimums not applicable to USA/USN/USAF. Pilots must review the IFR Alternate Airport Minimums Notes for alternate airfield suitability.

NAME ALTERNATE MINIMUMS

ABINGDON, VA
VIRGINIA HIGHLANDS (VJI) **LOC Rwy 24**
RNAV (GPS) Rwy 6
RNAV (GPS) Rwy 24
VOR/DME-B

NA when local weather not available.
Category C, 800-2¼, Category D, 800-2½.

ANNAPOLIS, MD

LEE (ANP) **RNAV(GPS)-A**
NA when local weather not available.

BALTIMORE, MD

BALTIMORE-WASHINGTON INTL THURGOOD
MARSHALL (BWI) **ILS or LOC Rwy 15L¹**
ILS or LOC Rwy 28²
VOR Rwy 10³

¹ILS, LOC, Categories A,B, 900-2; Category C, 900-2½; Category D, 900-2¾.
²ILS, Categories A,B,C, 700-2; Category D 700-2¼; LOC, Category D, 800-2¼.
³Categories A,B,1200-2; Category C,D 1200-3.

MARTIN STATE (MTN) **LDA Rwy 33¹²**
LOC Rwy 15¹²³
RNAV (GPS) Rwy 15²
RNAV (GPS) Rwy 33²
VOR/DME or TACAN Z Rwy 15³

¹NA when control tower closed.
²NA when local weather not available.
³Categories A, B, 900-2; Category C, 900-2½; Category D 900-2¾.

BLACKSBURG, VA

VIRGINIA TECH/MONTGOMERY
EXECUTIVE (BCB) **RNAV (GPS) Rwy 12**
RNAV (GPS) Rwy 30

NA when local weather not available.

NAME ALTERNATE MINIMUMS

CHARLOTTESVILLE, VA
CHARLOTTESVILLE-
ALBEMARLE (CHO) **ILS or LOC Rwy 3¹²³**
RNAV (GPS) Rwy 3²⁴
RNAV (GPS) Y Rwy 21²⁵
RNAV (GPS) Z Rwy 21²

¹NA when control tower closed.
²NA when local weather not available.
³Categories A, B, 1000-2; Categories C, D, 1000-3.
⁴Category D, 1000-3.
⁵Category C, 800-2¼; Category D, 1000-3.

COLLEGE PARK, MD

COLLEGE PARK (CGS) **RNAV (GPS) Rwy 15**
NA when local weather not available.

CULPEPER, VA

CULPEPER RGNL (CJR) **LOC Rwy 4¹**
RNAV (GPS) Rwy 4²
RNAV (GPS) Rwy 22²
VOR-A²

¹NA when FBO closed.
²NA when local weather not available.

CUMBERLAND, MD

GREATER CUMBERLAND
RGNL (CBE) **LOC-A¹**
LOC/DME Rwy 23
RNAV (GPS) Rwy 5²
RNAV (GPS) Rwy 23³

NA when local weather not available.
¹Categories A, B, 1300-2, Category C 1300-3, Category D 1500-3.
²Categories A, B, 1500-2, Category C 1500-3, Category D 1500-3.
³Categories A, B, 1100-2, Category C 1100-3.

31 MAY 2012 to 28 JUN 2012

31 MAY 2012 to 28 JUN 2012





ALTERNATE MINS

M2



NAME ALTERNATE MINIMUMS

DANVILLE, VA

DANVILLE RGNL (DAN) ILS or LOC Rwy 2
RNAV (GPS) Rwy 2
RNAV (GPS) Rwy 20
VOR Rwy 2
VOR Rwy 20¹

NA when local weather not available.

¹Categories A, B, 1000-2; Category C, 1000-2¾; Category D, 1000-3.

DUBLIN, VA

NEW RIVER VALLEY (PSK) RNAV (GPS) Rwy 6
RNAV (GPS) Rwy 24
VOR-A¹
VOR/DME Rwy 6

NA when local weather not available.

¹Categories A, B, 900-2; Category C, 900-2½; Category D, 900-2¾.

EASTON, MD

EASTON/NEWNAM FIELD (ESN) ILS or LOC/DME Rwy 4¹
RNAV (GPS) Rwy 4
RNAV (GPS) Rwy 15
RNAV (GPS) Rwy 22
RNAV (GPS) Rwy 33

NA when local weather not available.

¹ILS, LOC, NA when control tower closed.

EMPORIA, VA

EMPORIA-GREENSVILLE RGNL (EMV) RNAV (GPS) Rwy 15
RNAV (GPS) Rwy 33

NA when local weather not available.

FARMVILLE, VA

FARMVILLE RGNL (FVX) NDB Rwy 3¹
RNAV (GPS) Rwy 3
RNAV (GPS) Rwy 21

NA when local weather not available.

¹Categories A, B, 900-2; Category C, 900-2½.

FELKER AAF (KFAF)

FORT EUSTIS, VA..... ORIG 08297
NDB Rwy 14
COPTER NDB Rwy 14
RNAV (GPS) Rwy 14
COPTER RNAV (GPS) Rwy 14

NA when control tower closed.

FORT MEADE (ODENTON), MD

TIPTON (FME) RNAV (GPS) Rwy 28

NA when local weather not available.

NAME ALTERNATE MINIMUMS

FRANKLIN, VA

FRANKLIN MUNI-JOHN BEVERLY ROSE (FKN) RNAV (GPS) Rwy 9
RNAV (GPS) Rwy 27

NA when local weather not available.

FREDERICK, MD

FREDERICK MUNI (FDK) RNAV (GPS) Rwy 5¹²
RNAV (GPS) Y Rwy 23¹
RNAV (GPS) Z Rwy 23³

¹Category D, 800-2½.

²NA when local weather not available.

³Categories A,B,C,D, 800-2½.

FREDERICKSBURG, VA

SHANNON (EZF) RNAV (GPS) Rwy 24
Categories A, B, C, 1100-3
NA when local weather not available.

GAITHERSBURG, MD

MONTGOMERY COUNTY AIRPARK (GAI) NDB Rwy 14¹
RNAV (GPS)-A²

¹Categories A, B, 900-2; Category C, 900-2½; Category D, 900-2¾.

²NA when local weather not available.

GALAX/HILLSVILLE, VA

TWIN COUNTY (HLX) RNAV (GPS) Rwy 1
RNAV (GPS) Rwy 19

NA when local weather not available.

GEORGETOWN, DE

SUSSEX COUNTY (GED) ... RNAV (GPS) Rwy 4
RNAV (GPS) Rwy 22

NA when local weather not available.

HAGERSTOWN, MD

HAGERSTOWN RGNL-RICHARD A. HENSON FIELD (HGR) ILS or LOC Rwy 9¹
ILS or LOC Rwy 27¹
RNAV (GPS) Rwy 9
RNAV (GPS) Rwy 27
VOR Rwy 9

NA when local weather not available.

¹NA when control tower closed.

HOT SPRINGS, VA

INGALLS FIELD (HSP) RNAV (GPS) Rwy 7¹
RNAV (GPS) Rwy 25²

NA when local weather not available.

¹Categories A, B, 1000-2; Category C, 1000-2¾; Category D, 1000-3.

²Category C, 800-2¼; Category D, 800-2½.

31 MAY 2012 to 28 JUN 2012

31 MAY 2012 to 28 JUN 2012



ALTERNATE MINS

NE-3



M2



ALTERNATE MINS

M4



NAME ALTERNATE MINIMUMS

PHILLIPS AAF (KAPG)

ABERDEEN PROVING
GROUND, MD NDB Rwy 22
VOR Rwy 22
VOR/DME Rwy 22
RNAV (GPS) Rwy 22

NA when control tower closed.

RICHLANDS, VA

TAZEWELL
COUNTY (JFZ) LOC/DME Rwy 25
RNAV (GPS) Rwy 7
RNAV (GPS) Rwy 25

NA when local weather not available.

RICHMOND, VA

RICHMOND INTL (RIC) ILS or LOC Rwy 16
ILS, Categories A,B, 800-2; Category C,
800-2½; Category D, 800-2½.
LOC, Category C, 800-2½; Category D,
800-2½.

RICHMOND/ASHLAND, VA

HANOVER
COUNTY MUNI (OFF) RNAV (GPS) Rwy 16
VOR Rwy 16¹

NA when local weather not available.

¹Category C, 800-2½, Category D, 800-2½.

ROANOKE, VA

ROANOKE RGNL/WOODRUM
FIELD (ROA) ILS or LOC Rwy 34¹
LDA Rwy 6²
RNAV (GPS) Rwy 6³
RNAV (GPS) Rwy 24⁴
RNAV (GPS) Rwy 34⁵
VOR/NDB Rwy 34⁶

¹ILS, LOC, Categories A, B, 900-2; Categories C, D, 900-2½.

²Categories A,B, 1600-2; Categories C,D, 1600-3.

³Categories A, B, 900-2; Category C, 900-2½; Category D, 900-2¾.

⁴Categories A, B, 1900-2; Categories C, D, 1900-3.

⁵Categories A, B, 1200-2; Categories C, D, 1200-3.

⁶Categories A,B, 1400-2; Categories C,D, 1400-3.

NAME ALTERNATE MINIMUMS

SALISBURY, MD

SALISBURY-OCEAN CITY
WICOMICO RGNL (SBY) .. ILS or LOC Rwy 32
RNAV (GPS) Rwy 5
RNAV (GPS) Rwy 14
RNAV (GPS) Rwy 23
RNAV (GPS) Rwy 32
VOR Rwy 5
VOR Rwy 23¹
VOR Rwy 32

NA when local weather not available.

¹Categories A, B, 1100-2; Categories C, D, 1100-3.

SOUTH HILL, VA

MECKLENBURG-
BRUNSWICK RGNL (AVC) LOC Rwy 1
RNAV (GPS) Rwy 1
RNAV (GPS) Rwy 19

NA when local weather not available.

STAUNTON-WAYNESBORO- HARRISONBURG, VA

SHENANDOAH VALLEY
RGNL (SHD) ILS or LOC Rwy 5¹
NDB Rwy 5
RNAV (GPS) Rwy 5
RNAV (GPS) Rwy 23

NA when local weather not available.

¹ILS, Category D, 700-2.

SUFFOLK, VA

SUFFOLK EXECUTIVE (SFQ) LOC Rwy 4
RNAV (GPS) Rwy 4
RNAV (GPS) Rwy 7
RNAV (GPS) Rwy 22
RNAV (GPS) Rwy 25

NA when local weather not available.

WALLOPS ISLAND, VA

WALLOPS FLIGHT
FACILITY (WAL) . VOR/DME or TACAN Rwy 10
Categories A,B, 900-2; Category C, 900-2½;
Category D, 900-2¾.

31 MAY 2012 to 28 JUN 2012

31 MAY 2012 to 28 JUN 2012



ALTERNATE MINS

NE-3



M4

TAKE-OFF MINIMUMS AND (OBSTACLE) DEPARTURE PROCEDURES

12152

INSTRUMENT APPROACH PROCEDURE CHARTS

IFR TAKE-OFF MINIMUMS AND (OBSTACLE) DEPARTURE PROCEDURES

Civil Airports and Selected Military Airports

ALL USERS: Airports that have Departure Procedures (DPs) designed specifically to assist pilots in avoiding obstacles during the climb to the minimum enroute altitude, and/or airports that have civil IFR take-off minimums other than standard, are listed below. Take-off Minimums and Departure Procedures apply to all runways unless otherwise specified. Altitudes, unless otherwise indicated, are minimum altitudes in MSL.

DPs specifically designed for obstacle avoidance are referred to as Obstacle Departure Procedures (ODPs) and are described below in text, or published separately as a graphic procedure. If the (Obstacle) DP is published as a graphic procedure, its name will be listed below, and it can be found in either this volume (civil), or the applicable military volume, as appropriate. Users will recognize graphic obstacle DPs by the term "(OBSTACLE)" included in the procedure title; e.g., TETON TWO (OBSTACLE). If not specifically assigned a departure procedure (i.e., ODP, SID, or radar vector) as part of an IFR clearance, an ODP may be required to be flown for obstacle clearance, even though not specifically stated in the IFR clearance. When doing so in this manner, ATC should be informed when the ODP being used contains a specified route to be flown, restrictions before turning, and/or altitude restrictions.

Graphic DPs designed by ATC to standardize traffic flows, ensure aircraft separation and enhance capacity are referred to as "Standard Instrument Departures (SIDs)". SIDs also provide obstacle clearance and are published under the appropriate airport section. ATC clearance must be received prior to flying a SID.

CIVIL USERS NOTE: Title 14 Code of Federal Regulations Part 91 prescribes standard take-off rules and establishes take-off minimums for certain operators as follows: (1) Aircraft having two engines or less - one statute mile. (2) Aircraft having more than two engines - one-half statute mile. These standard minima apply in the absence of any different minima listed below.

MILITARY USERS NOTE: Civil (nonstandard) take-off minima are published below. For military take-off minima, refer to appropriate service directives.

NAME TAKE-OFF MINIMUMS

ABINGDON, VA

VIRGINIA HIGHLANDS (VJI)

AMDT 2 10266 (FAA)

TAKE-OFF MINIMUMS: **Rwy 6**, 300-2 or 300-1½ w/ min. climb of 225' per NM to 2500, or std. w/ min. climb of 749' per NM to 2500.

DEPARTURE PROCEDURE: **Rwy 6**, climb heading 061° and HMV VORTAC R-034 to 5500 before proceeding on course. **Rwy 24**, climb heading 241° to 3700 before proceeding on course.

NOTE: **Rwy 6**, vehicle 89' from DER, 411' left of centerline, 15' AGL/2094' MSL. Obstruction light 504' from DER, 314' left of centerline, 22' AGL/2122' MSL. Trees beginning 214' from DER, 245' right of centerline, up to 100' AGL/2240' MSL. Trees beginning 579' from DER, 35' left of centerline, up to 100' AGL/2379' MSL. **Rwy 24**, hangar vent 13' from DER, 496' left of centerline, 55' AGL/2086' MSL. Buildings 828' from DER, 628' left of centerline, up to 25' AGL/2084' MSL. Trees beginning 2222' from DER, 262' right of centerline, up to 100' AGL/2200' MSL. Tree 3592' from DER, 14' left of centerline, 100' AGL/2167' MSL.

NAME TAKE-OFF MINIMUMS

ANNAPOLIS, MD

LEE (ANP)

ORIG 01361 (FAA)

TAKE-OFF MINIMUMS: **Rwy 30**, 300-1 or std. with a min. climb of 410' per NM to 400.

DEPARTURE PROCEDURE: **Rwy 12**, climb runway heading to 700 before proceeding on course.

Rwy 30, climb runway heading to 1000 before proceeding right on course. Climb runway heading to 700 before proceeding left on course.

NOTE: **Rwy 12**, cross departure end of runway at or above 35' AGL/66' MSL. **Rwy 30**, trees, 1433' from departure end of runway, 85' left of centerline, 100' AGL/139' MSL. Cross departure end of runway at or above 35' AGL/66' MSL.

31 MAY 2012 to 28 JUN 2012

31 MAY 2012 to 28 JUN 2012

12152

TAKE-OFF MINIMUMS AND (OBSTACLE) DEPARTURE PROCEDURES

NE-3

TAKE-OFF MINIMUMS AND (OBSTACLE) DEPARTURE PROCEDURES

12152

BALTIMORE, MD

BALTIMORE/WASHINGTON INTL THURGOOD MARSHALL (BWI)

AMDT 9 10266 (FAA)

TAKE-OFF MINIMUMS: **Rwy 4**, 300-1½ or std. w/min. climb of 210' per NM to 500, or alternatively, with standard takeoff minimums and a normal 200' per NM climb gradient, takeoff must occur no later than 1300' prior to DER. **Rwy 33R**, std. w/min. climb of 251' per NM to 2000.

DEPARTURE PROCEDURE: **Rwy 4**, climb heading 044° to 800 before turning left. **Rwy 28**, climb heading 285° to 900 before turning right. **Rwy 33L**, climb heading 320° to 2000 before turning right.

NOTE: **Rwy 4**, rod on lighted pole 1921' from DER, 329' right of centerline, 58' AGL/197' MSL. Light on pole 2177' from DER, 294' left of centerline, 58' AGL/197' MSL. Light on pole 1755' from DER, 482' right of centerline, 47' AGL/186' MSL. Tree 2370' from DER, 481' right of centerline, 60' AGL/199' MSL. Tank 1.2 NM from DER, 2274' left of centerline, 173' AGL/338' MSL. **Rwy 10**, building 52' from DER, 319' left of centerline, 13' AGL/133' MSL. **Rwy 15L**, trees beginning 648' from DER, 619' left of centerline, up to 68' AGL/167' MSL. Light on pole 921' from DER, 618' left of centerline, 62' AGL/161' MSL. **Rwy 15R**, trees beginning 1144' from DER, 740' right of centerline, up to 53' AGL/172' MSL. **Rwy 22**, light poles beginning 213' from DER, 365' left of centerline, up to 30' AGL/189' MSL. **Rwy 28**, tree 1392' from DER, 736' left of centerline, 77' AGL/176' MSL. **Rwy 33L**, fence 203' from DER, 517' right of centerline, 9' AGL/149' MSL. Tree 2250' from DER, 843' right of centerline, 66' AGL/205' MSL. Microwave antenna on building, 4725' from DER, 907' right of centerline, 126' AGL/265' MSL. Building 4693' from DER, 874' right of centerline, 127' AGL/266' MSL. Building-tower 4734' from DER, 907' right of centerline, 126' AGL/265' MSL. Building 4693' from DER, 874' right of centerline, 127' AGL/266' MSL. Building-tower 4734' from DER, 922' right of centerline, 140' AGL/260' MSL. **Rwy 33R**, trees beginning 2925' from DER, 321' left of centerline, up to 70' AGL/289' MSL. Trees beginning 975' from DER, 116' right of centerline, up to 83' AGL/262' MSL. Light on pole 2384' from DER, 837' right of centerline, 55' AGL/254' MSL. Light on pole 2736' from DER, 247' right of centerline, 17' AGL/216' MSL. Pole 3781' from DER, 370' right of centerline, 40' AGL/242' MSL. Building 998' from DER, 654' left of centerline, 24' AGL/183' MSL. Signal 2453' from DER, 904' left of centerline, 45' AGL/204' MSL. Light on pole 3869' from DER, 603' left of centerline, 72' AGL/251' MSL.

BALTIMORE, MD (CON'T)

MARTIN STATE (MTN)

AMDT 4 00279 (FAA)

TAKE-OFF MINIMUMS: **Rwy 15**, 800-2 or std. with a min. climb of 300' per NM to 1000. **Rwy 33**, 1300-2 or std. with a min. climb of 340' per NM to 1700'.

DEPARTURE PROCEDURE: **Rwy 15**, climb runway heading to 1000 before proceeding on course; or when directed by ATC, climbing right turn heading 190° to 1000 before proceeding on course.

NOTE: **Rwy 15**, trees 1960' from departure end of runway 684' left of centerline, 78' AGL/88' MSL, trees 3395' from departure end of runway, 585' left of centerline, 92' AGL/102' MSL. **Rwy 33**, pole 1553' from departure end of runway, across centerline, 68' AGL/90' MSL. Trees 2342' from departure end of runway, across centerline 86' AGL/108' MSL.

BLACKSBURG, VA

VIRGINIA TECH/MONTGOMERY EXECUTIVE (BCB)

AMDT 5 11181 (FAA)

TAKE-OFF MINIMUMS: **Rwy 12**, 400-1½ or std. w/min. climb of 500' per NM to 2700.

DEPARTURE PROCEDURE: **Rwy 12**, climbing right turn direct PSK VORTAC to 3500 before proceeding on course. **Rwy 30**, climbing left turn direct PSK VORTAC to 4100 before proceeding on course.

NOTE: **Rwy 12**, trees beginning 19' from DER, 418' left of centerline, up to 100' AGL/2453' MSL. Trees beginning 242' from DER, 151' right of centerline, up to 100' AGL/2279' MSL. **Rwy 30**, rising terrain, trees, and poles beginning 3' from DER, 273' right of centerline, up to 45' AGL/2165' MSL. Rising terrain, trees, and poles beginning 90' from DER, 187' left of centerline, up to 100' AGL/2222' MSL. Vehicle on road beginning 567' from DER left and right of centerline up to 15' AGL/2146' MSL. Fence beginning 697' from DER, left and right of centerline, up to 10' AGL/2136' MSL.

BLACKSTONE, VA

ALLEN C. PERKINSON MUNI/BLACKSTONE AAF (BKT)

AMDT 2 12152 (FAA)

TAKE-OFF MINIMUMS: **Rwy 1**, std. w/min. climb of 230' per NM to 1700 or 1000-2½ for climb in visual conditions. **Rwy 19**, NA - environmental.

DEPARTURE PROCEDURE: **Rwy 1**, for climb in visual conditions: Cross Allen C. Perkinson Muni/Blackstone AAF airport at or above 1300 MSL before proceeding on course. When executing VCOA, notify ATC prior to departure. **Rwy 4**, climb heading 044° to 1300 before turning left.

NOTE: **Rwy 1**, trees beginning 1000' from DER, 277' left of centerline, up to 100' AGL/559' MSL. Trees beginning 1200' from DER, 249' right of centerline, up to 100' AGL/549' MSL. **Rwy 4**, trees beginning 674' from DER, 560' left of centerline, up to 61' AGL/490' MSL. Trees beginning 143' from DER, 492' right of centerline, up to 96' AGL/515' MSL. **Rwy 22**, trees beginning 274' from DER, 532' left of centerline, up to 100' AGL/509' MSL. Terrain and trees beginning 41' from DER, 405' right of centerline, up to 100' AGL/519' MSL.

NOTE: Do not overfly Ammunition Dump 1.1 NM Southwest of runway 4.

31 MAY 2012 to 28 JUN 2012

31 MAY 2012 to 28 JUN 2012

12152

TAKE-OFF MINIMUMS AND (OBSTACLE) DEPARTURE PROCEDURES

NE-3

TAKE-OFF MINIMUMS AND (OBSTACLE) DEPARTURE PROCEDURES

12152

BRIDGEWATER, VA

BRIDGEWATER AIRPARK (VBW)
AMDT 2A 11349 (FAA)

TAKE-OFF MINIMUMS: **Rwy 15**, 300-2½ w/ min. climb of 280'/NM to 3900, or std. w/ min. climb of 440'/NM to 2600, or 2400-3 for climb in visual conditions. **Rwy 33**, 800-2½ w/ min. climb of 390'/NM to 3900, or std. w/ min. climb of 522' per NM to 2800, or 2400-3 for climb in visual conditions.

DEPARTURE PROCEDURE: **Rwy 15**, climb heading 152° to 3900, or for climb in visual conditions, cross Bridgewater Air Park at or above 3400 before proceeding on course. **Rwy 33**, climb heading 347° to 5000, or for climb in visual conditions, cross Bridgewater Air Park at or above 3400 before proceeding on course.

NOTE: **Rwy 15**, vehicles on roadway 53' from DER, 14' right of centerline, 15' AGL/1180' MSL. Trees beginning 158' from DER, 259' right of centerline, up to 100' AGL/1279' MSL. Trees beginning 499' from DER, 628' left of centerline, up to 100' AGL/1279' MSL. Pole 908' from DER, 183' left of centerline, 35' AGL/1200' MSL. Trees beginning 3205' from DER, 1329' right of centerline, up to 100' AGL/1359' MSL. **Rwy 33**, trees beginning 318' from DER, 252' right of centerline, up to 100' AGL/1249' MSL. Trees beginning 470' from DER, 191' left of centerline, up to 100' AGL/1249' MSL.

BROOKNEAL, VA

BROOKNEAL/CAMPBELL COUNTY

NOTE: **Rwy 6**, multiple trees beginning 569' from departure end of runway, 252' right of centerline, up to 100' AGL/689' MSL. **Rwy 24**, multiple trees beginning 334' from departure end of runway, 286' right of centerline, up to 100' AGL/679' MSL. Multiple trees beginning 1377' from departure end of runway, 850' left of centerline, up to 100' AGL/719' MSL.

BUMPASS, VA

LAKE ANNA (7W4)
ORIG 11349 (FAA)

DEPARTURE PROCEDURE: **Rwy 8**, climb heading 085° to 800 before turning. **Rwy 26**, climb heading 265° to 800 before turning.

NOTE: **Rwy 8**, trees beginning 32' from DER, 114' right of centerline, up to 100' AGL/469' MSL. Buildings beginning 162' from DER, 152' left of centerline, up to 25' AGL/384' MSL. **Rwy 26**, trees beginning 31' from DER, 97' left and 119' right of centerline, up to 100' AGL/459' MSL.

CAMBRIDGE, MD

CAMBRIDGE-DORCHESTER
TAKE-OFF MINIMUMS: **Rwy 34**, 300-1.

CAMP PEARY LNDG STRIP (KW94)

WILLIAMSBURG, VA 08213

TAKE-OFF OBSTACLES: **Rwy 5**: trees and multiple transmission lines 120' from DER, 184' left of centerline up to 95' AGL/126' MSL. Trees and multiple transmission lines 162' from DER, 257' right of centerline up to 100' AGL/132' MSL. **Rwy 23**: trees and multiple transmission lines 1891' from DER, 69' left of centerline up to 95' AGL/136' MSL. Multiple trees and transmission lines 537' from DER, 437' right of centerline up to 110' AGL/151' MSL.

12152

CHARLOTTESVILLE, VA

CHARLOTTESVILLE-ALBEMARLE (CHO)
AMDT 9 09295 (FAA)

TAKE-OFF MINIMUMS: **Rwy 3**, std. w/ min. climb of 323' per NM to 1500, or 2200-3 for climb in visual conditions. DEPARTURE PROCEDURE: **Rwy 3**, climb via heading 030° to 1500 then climbing right turn to 4000 direct GVE VORTAC before proceeding on course, or for climb in visual conditions: cross Charlottesville-Albemarle airport at or above 2700 before proceeding on course.

Rwy 21, climb via heading 210° to 1400, then climbing left turn to 4000 direct GVE VORTAC before proceeding on course.

NOTE: **Rwy 3**, pole 97' from DER, 476' right of centerline, 27' AGL/627' MSL. Trees beginning 836' from DER, 597' right of centerline, up to 100' AGL/1216' MSL. Tower 2.3 NM from DER, 3443' right of centerline, 107' AGL/1167' MSL. Terrain beginning 2.2 NM from DER, 3183' right of centerline, up to 1116' MSL.

CHASE CITY, VA

CHASE CITY MUNI

NOTE: **Rwy 18**, trees beginning 191' from departure end of runway, 116' left of centerline, up to 100' AGL/609' MSL. Multiple trees beginning 327' from departure end of runway, 133' right of centerline, up to 100' AGL/599' MSL. **Rwy 36**, trees beginning 164' from departure end of runway, 154' right of centerline, up to 100' AGL/649' MSL. Trees beginning 470' from departure end of runway, 124' left of centerline, up to 100' AGL/649' MSL.

CHURCHVILLE, MD

HARFORD COUNTY (0W3)
AMDT 1 10322 (FAA)

TAKE-OFF MINIMUMS: **Rwys 1,14,19,32**, N/A-Environmental. **Rwy 10**, 300-2 or std. w/ min. climb of 210' per NM to 800' or alternatively, with std. takeoff minimums and a normal 200' per NM climb gradient, takeoff must occur no later than 1500' prior to DER.

NOTE: **Rwy 10**, vehicles on roadway beginning 328' from DER, left and right of centerline, up to 17' AGL/416' MSL. Trees beginning 690' from DER, 271' left of centerline, up to 100' AGL/499' MSL. Trees beginning 2226' from DER, 454' right of centerline, up to 100' AGL/519' MSL. Rising terrain beginning 1.6 NM from DER, 2510' left of centerline, up to 639' MSL. **Rwy 28**, trees beginning 665' from DER, left and right of centerline, up to 100' AGL/519' MSL.

CLARKSVILLE, VA

LAKE COUNTRY RGNL (W63)
AMDT 1 10098 (FAA)

NOTE: **Rwy 4**, trees beginning 5' from DER, 438' left of centerline, up to 100' AGL/539' MSL. Building 27' from DER, 94' right of centerline, 20' AGL/449' MSL. Vehicles on road beginning 200' from DER, from left to right of centerline, up to 15' AGL/444' MSL. Warehouse 313' from DER, on centerline, 75' AGL/495' MSL. Building 385' from DER, 257' right of centerline, 20' AGL/439' MSL. Trees beginning 444' from DER, 518' right of centerline, up to 100' AGL/509' MSL. **Rwy 22**, trees beginning 3' from DER from 452' left of centerline to 547' right of centerline, up to 100' AGL/422' MSL. Trees beginning 1624' from DER, from 632' left of centerline to 535' right of centerline, up to 100' AGL/485' MSL.

TAKE-OFF MINIMUMS AND (OBSTACLE) DEPARTURE PROCEDURES

NE-3

TAKE-OFF MINIMUMS AND (OBSTACLE) DEPARTURE PROCEDURES

12152

CLINTON, MD

WASHINGTON EXECUTIVE/HYDE FIELD
(W32)

ORIG -A 10126 (FAA)

NOTE: **Rwy 5**, Vehicle on road beginning 20' from DER, on centerline, up to 15' AGL/261' MSL. Antenna on tower beginning 2333' from DER, 556' right of centerline, 137' AGL/361' MSL. **Rwy 23**, Vehicle on road 23' from departure end of runway, 329' left of centerline, 15' AGL/260' MSL.

COLLEGE PARK, MD

COLLEGE PARK (CGS)
AMDT 3B 08157 (FAA)

TAKE-OFF MINIMUMS: **Rwy 15**, 400-2¼ or std. w/min. climb of 486' per NM to 600. **Rwy 33**, 400-2½ or std. w/min. climb of 433' per NM to 600.

DEPARTURE PROCEDURE: **Rwy 15**, climb heading 149° to 600 before proceeding on course. **Rwy 33**, climb heading 329° to 600 before proceeding on course.

NOTE: **Rwy 15**, trees beginning 2799' from departure end of runway, 570' left of centerline, up to 100' AGL/259' MSL. Antenna 1.1 NM from departure end of runway, 149' left of centerline, 167' AGL/270' MSL. **Rwy 33**, terrain beginning 1 NM from departure end of runway, 3700' right of centerline to 3700' left of centerline, up to 439' MSL. Building 3811' from departure end of runway, 467' right of centerline, 184' AGL/254' MSL. Tower 1.9 NM from departure end of runway, 1447' left of centerline, 255' AGL/405' MSL.

CREWE, VA

CREWE MUNI (W81)
ORIG 11013 (FAA)

NOTE: **Rwy 15**, trees beginning 140' from DER, 464' left of centerline, up to 100' AGL/449' MSL. Trees beginning 406' from DER, 448' right of centerline, up to 100' AGL/509' MSL. **Rwy 33**, trees beginning 985' from DER, 587' left of centerline, up to 100' AGL/539' MSL. Trees beginning 520' from DER, 513' right of centerline, up to 100' AGL/529' MSL.

CRISFIELD, MD

CRISFIELD MUNI

TAKE-OFF MINIMUMS: **Rwys 6, 24**, NA-obstacles
DEPARTURE PROCEDURE: **Rwy 14**, climb via heading 142° to 900 before proceeding on course.

Rwy 32, climb via heading 322° to 900 before proceeding on course.

CULPEPER, VA

CULPEPER RGNL (CJR)
ORIG 07354 (FAA)

DEPARTURE PROCEDURE: **Rwy 22**, climb heading 218° to 1000 before turning right.

NOTE: **Rwy 4**, tree 79' from departure end of runway, 418' left of centerline 86' AGL/337' MSL. Vehicle on road 207' from departure end of runway, 367' left of centerline, 15' AGL/330' MSL. Tree 3396' from departure end of runway, 514' right of centerline, 91' AGL/410' MSL. **Rwy 22**, tree 128' from departure end of runway, 332' left of centerline, 25' AGL/334' MSL. Multiple trees beginning 272' from departure end of runway, 179' right of centerline up to 22' AGL/341' MSL. Pole 1480' from departure end of runway, 68' left of centerline, 27' AGL/356' MSL.

CUMBERLAND, MD

GREATER CUMBERLAND RGNL (CBE)
AMDT 6 11237 (FAA)

TAKE-OFF MINIMUMS: **Rwys 11, 29**, N/A-Obstacles.

Rwy 5, std. w/min. climb of 320' per NM to 3200 or 2400-3 for climb in visual conditions. **Rwy 23**, 1200-3 w/min. climb of 480' per NM to 2000 or std. w/min. climb of 929' per NM to 2400 or 2400-3 for climb in visual conditions.

DEPARTURE PROCEDURE: **Rwy 5**, climb heading 049° to 2300 before proceeding on course, or for climb in visual conditions cross Greater Cumberland Rgnl Airport at or above 3000 before proceeding on course.

Rwy 23, climbing left turn on heading 140° to intercept 177° bearing from CBE NDB to 3000 before proceeding on course, or for climb in visual conditions cross Greater Cumberland Rgnl Airport at or above 3000 before proceeding on course.

NOTE: **Rwy 5**, trees beginning 146' from DER, left and right of centerline, up to 100' AGL/821' MSL.

Obstruction light on antenna, 1.3 NM from DER, 2543' left of centerline, 210' AGL/1076' MSL. **Rwy 23**, trees beginning 53' from DER, 497' left and right of centerline, up to 100' AGL/929' MSL. Obstruction light on DME 169' from DER, 269' left of centerline, 59' AGL/732' MSL. Tower 2029' from DER, 757' right of centerline, up to 99' AGL/959' MSL.

DANVILLE, VA

DANVILLE RGNL (DAN)
AMDT 1 10098 (FAA)

TAKE-OFF MINIMUMS: **Rwy 13**, 300-1¼ or std. with a min. climb of 299' per NM to 900.

NOTE: **Rwy 2**, tree 1092' from DER, 8' left of centerline, 67' AGL/586' MSL. Tree 1524' from DER, 659' right of centerline, 67' AGL/606' MSL. **Rwy 13**, trees beginning 569' from DER, 300' right of centerline, up to 100' AGL/759' MSL. Trees beginning 680' from DER, 308' left of centerline, up to 65' AGL/604' MSL. **Rwy 20**, tree 1328' from DER, 633' right of centerline, 30' AGL/569' MSL. **Rwy 31**, hanger 395' from DER, 573' left of centerline, 23' AGL/602' MSL. Pole 1002' from DER, 375' left of centerline, 29' AGL/608' MSL. Antenna 1165' from DER, 416' left of centerline, 62' AGL/641' MSL. Trees beginning 1206' from DER, 287' left of centerline, up to 80' AGL/699' MSL. Trees beginning 2180' from DER, 632' right of centerline, up to 62' AGL/681' MSL.

DAVISON AAF (KDAW)

FORT BELVOIR, VA

.....Rwy 32, 300-1*

* Or standard with minimum climb of 380/NM to 500.

TAKE-OFF OBSTACLES: **Rwy 32**, 63' AGL tree 865' from departure end of rwy, 82' right of centerline.

31 MAY 2012 to 28 JUN 2012

31 MAY 2012 to 28 JUN 2012

12152

TAKE-OFF MINIMUMS AND (OBSTACLE) DEPARTURE PROCEDURES

NE-3

TAKE-OFF MINIMUMS AND (OBSTACLE) DEPARTURE PROCEDURES

12152

DOVER AFB (KDOV)

DOVER, DE 09155

TAKE-OFF OBSTACLES: **Rwy 1**, possible aircraft/vehicles at DER hammerhead just left of rwy centerline, up to 65' AGL/91' MSL. **Rwy 19**, possible aircraft/vehicles at DER hammerhead just right of rwy centerline, up to 65' AGL/91' MSL. **Rwy 32**, multiple C-5s parked on ramp beginning 1535' thru 2780' from DER, 1010' left of centerline, up to 65' AGL/98' MSL. Bldg 3900' from DER, 760' left of centerline, 88' AGL/119' MSL. Possible taxiing aircraft/vehicles on taxiway Alpha beginning 565' thru 2780' from DER, 750' left of centerline, up to 65' AGL/98' MSL. Possible large aircraft 2800' from DER, on taxiway Golf just left of centerline, up to 65' AGL/92' MSL.

DOVER/CHESWOLD, DE

DELAWARE AIRPARK

NOTE: **Rwy 9**, multiple trees beginning 26' from departure end of runway, 50' left of centerline, up to 100' AGL/149' MSL. Pole line 1151' from departure end of runway, 36' right of centerline, 50' AGL/99' MSL. Multiple trees beginning 815' from departure end of runway, 505' right of centerline, up to 100' AGL/154' MSL. **Rwy 27**, multiple trees beginning 231' from departure end of runway, 85' left of centerline, up to 100' AGL/169' MSL. Multiple trees beginning 829' from departure end of runway, 43' right of centerline, up to 100' AGL/164' MSL.

DUBLIN, VA

NEW RIVER VALLEY (PSK)

AMDT 2 09071 (FAA)

TAKE-OFF MINIMUMS: **Rwy 24**, 200-1½ or std. w/ min. climb of 310' per NM to 2400.

DEPARTURE PROCEDURE: **Rwy 6**, climbing right turn heading 150° to intercept PSK VORTAC R-120 outbound to 5200 before proceeding on course.

Rwy 24, climb heading 238° to 4000 before proceeding on course.

NOTE: **Rwy 6**, tree 321' from DER, 493' left of centerline, 100' AGL/2112' MSL. Terrain 122' from DER, 460' left of centerline, up to 2105' MSL. **Rwy 24**, pole 1223' from DER, 671' right of centerline, 42' AGL/2161' MSL. Pole 669' from DER, 558' right of centerline, 18' AGL/2137' MSL. Pole 4851' from DER, 1170' left of centerline, 32' AGL/2231' MSL. Tower 5078' from DER 1017' left of centerline, 101' AGL/2300' MSL. Trees 226' from DER, 271' left of centerline, up to 103' AGL/2302' MSL. Terrain 68' from DER, 281' right of centerline, up to 2116' MSL.

EASTON, MD

EASTON/NEWNAM FIELD

TAKE-OFF MINIMUMS: **Rwy 22**, 300-2 or std. w/ climb of 241' per NM to 500.

NOTE: **Rwy 4**, vehicles on roads beginning 199' from departure end of runway, 350' right of centerline, up to 15' AGL/102' MSL. Multiple poles beginning 434' from departure end of runway, 88' right of centerline, up to 31' AGL/100' MSL. Multiple trees beginning 1485' from departure end of runway, 46' right of centerline, up to 64' AGL/133' MSL. Tree 1509' from departure end of runway, 38' left of centerline, 47' AGL/116' MSL.

Rwy 15, fence 2' from departure end of runway, 411' left of centerline, 8' AGL/57' MSL. Multiple poles beginning 721' from departure end of runway, 183' left of centerline, up to 64' AGL/123' MSL. Multiple poles beginning 828' from departure end of runway, 514' right of centerline, up to 26' AGL/85' MSL. Multiple trees beginning 862' from departure end of runway, 275' left of centerline, up to 89' AGL/148' MSL. Multiple trees beginning 1357' from departure end of runway, 238' right of centerline, up to 94' AGL/153' MSL. **Rwy 22**, tree 1251' from departure end of runway, 786' right of centerline, 56' AGL/95' MSL. Multiple trees beginning 1323' from departure end of runway, 759' left of centerline, up to 90' AGL/129' MSL. Tower 1.6 NM from departure end of runway, 2373' left of centerline, 276' AGL/291' MSL. **Rwy 33**, multiple trees 10' from departure end of runway, 19' right of centerline, up to 139' AGL/158' MSL. Vehicle on road 352' from departure end of runway, 405' right of centerline, 15' AGL/59' MSL. Pole 888' from departure end of runway, 409' left of centerline, 19' AGL/58' MSL. Multiple trees beginning 1153' from departure end of runway, 245' left of centerline, up to 99' AGL/118' MSL.

ELKTON, MD

CECIL COUNTY

TAKE-OFF MINIMUMS: NOTE: **Rwy 13**, cross departure end of runway at or above 27' AGL/89' MSL.

Rwy 31, 300-1½ or std. w/ min. climb of 290' per NM to 400.

DEPARTURE PROCEDURE: **Rwy 31**, climb heading 308° to 900 before turning left.

NOTE: **Rwy 13**, trees 185' from departure end of runway, 110' right of centerline, 50' AGL/113' MSL. Trees 325' from departure end of runway, 125' left of centerline, 75' AGL/138' MSL. **Rwy 31**, trees, 1350' from departure end of runway, on centerline, 115' AGL/221' MSL. Trees beginning 1050' from departure end of runway, 781' left to 781' right of centerline, up to 100' AGL/309' MSL.

EMPORIA, VA

EMPORIA-GREENSVILLE RGNL (EMV)

ORIG 09155 (FAA)

NOTE: **Rwy 15**, vehicle on roadway 21' from DER, 291' left of centerline, up to 15' AGL/124' MSL. Trees beginning 56' from DER, 245' right of centerline, up to 60' AGL/169' MSL. Trees beginning 98' from DER, 231' left of centerline, up to 60' AGL/169' MSL. Trees beginning 1387' from DER, 387' left of centerline, up to 60' AGL/149' MSL. **Rwy 33**, trees beginning 115' from DER, 276' right of centerline, up to 60' AGL/189' MSL. Trees beginning 138' from DER, 321' left of centerline, up to 60' AGL/189' MSL. Vehicle on roadway, 163' from DER, 524' right of centerline, up to 15' AGL/144' MSL. Vehicle on roadway, 222' from DER, 534' left of centerline, up to 17' AGL/146' MSL.

12152

TAKE-OFF MINIMUMS AND (OBSTACLE) DEPARTURE PROCEDURES

NE-3

TAKE-OFF MINIMUMS AND (OBSTACLE) DEPARTURE PROCEDURES

12152

FARMVILLE, VA FARMVILLE RGNL (FVX) AMDT 1 10154 (FAA)

NOTE: **Rwy 3**, trees beginning 64' from DER, 156' left of centerline, up to 77' AGL/506' MSL. Trees beginning 149' from DER, 398' right of centerline, up to 93' AGL/502' MSL. **Rwy 21**, vehicle on road 97' from DER, 475' left of centerline, up to 15' AGL/422' MSL. Trees beginning 56' from DER, 21' right of centerline, up to 80' AGL/489' MSL. Trees beginning 553' from DER, 53' left of centerline, up to 55' AGL/491' MSL.

FELKER AAF (KFAF), FORT EUSTIS, VA 08297 **Rwy 14, 32** standard.

TAKE-OFF OBSTACLES: **Rwy 14**: Tree 3133' from DER, 167' left of centerline, 103' AGL/112' MSL. **Rwy 32**: Crane 2938' from DER, 941' left of centerline, 114' AGL/124' MSL. Trees beginning 2931' from DER, 186' left of centerline up to 74' AGL/85' MSL.

FOREST, VA NEW LONDON (W90) ORIG 12152 (FAA)

TAKE-OFF MINIMUMS: **Rwy 18**, 300-1 or std. w/min. climb of 511' per NM to 1000.
DEPARTURE PROCEDURE: **Rwy 18**, climb heading 176° to 2200 before proceeding on course. **Rwy 36**, climbing right turn heading 066° and on LYHR-005 outbound to 3500 before proceeding on course.
NOTE: **Rwy 18**, trees beginning at DER, left and right of centerline, up to 100' AGL/919' MSL. **Rwy 36**, trees beginning at DER, left and right of centerline, up to 100' AGL/979' MSL. Vehicle on roadway, 19' from DER, 186' left of centerline, up to 15' AGL/894' MSL.

FORT MEADE (ODENTON), MD TIPTON

NOTE: **Rwy 10**, cross departure end of runway at or above 17' AGL/167' MSL. **Rwy 10**, trees 1052' right of departure end of runway, 88' AGL/238' MSL.

FRANKLIN, VA FRANKLIN MUNI-JOHN BEVERLY ROSE (FKN) AMDT 2 09071 (FAA)

NOTE: **Rwy 9**, trees beginning 1977' from DER, 349' left of centerline, up to 100' AGL/139' MSL. Trees beginning 1287' from DER, 236' right of centerline, up to 100' AGL/134' MSL. Vehicle on road 533' from DER, 604' right of centerline, 15' AGL/59' MSL. **Rwy 27**, trees beginning 100' from DER, 444' left of centerline, up to 100' AGL/134' MSL. Trees beginning 520' from DER, 520' right of centerline, up to 100' AGL/134' MSL. Vehicle on road 308' from DER, left to right of centerline, 15' AGL/44' MSL.

FREDERICK, MD FREDERICK MUNI (FDK) AMDT 3 11181 (FAA)

TAKE-OFF MINIMUMS: **Rwy 5**, 400-2½ or std. w/min. climb of 260' per NM to 600. **Rwy 12**, 500-2¾ or std. w/min. climb of 385' per NM to 1000. **Rwy 30**, std. w/min. climb of 290' per NM to 700 or 1500-2½ for climb in visual conditions.

DEPARTURE PROCEDURE: **Rwy 5**, climbing left turn on FDK VOR R-010 to 1700 before proceeding on course. **Rwy 12**, climb heading 124° to 900 before turning. **Rwy 23**, climb heading 228° to 1200 before turning right. **Rwy 30**, climbing right turn on FDK VOR R-010 to 2400 or for climb in visual conditions, cross Frederick Muni Airport at or above 1700 before proceeding on course.

NOTE: **Rwy 5**, trees beginning 1556' from DER, left and right of centerline, up to 100' AGL/599' MSL. Elevators beginning 4842' from DER, 332' right of centerline, up to 76' AGL/436' MSL. **Rwy 12**, rod on building, 171' from DER, 528' right of centerline, 40' AGL/321' MSL. Trees beginning 233' from DER, left and right of centerline, up to 100' AGL/764' MSL. Pole 5358' from DER, 45' right of centerline, 80' AGL/519' MSL. **Rwy 23**, vehicles on road beginning 135' from DER, 377' right of centerline, up to 17' AGL/320' MSL. Rising terrain beginning 193' from DER, 471' left of centerline, up to 310' MSL. Buildings and poles beginning 935' from DER, 286' right of centerline, up to 61' AGL/362' MSL. Pole 1526' from DER, 626' left of centerline, 46' AGL/367' MSL. **Rwy 30**, trees beginning 1096' from DER, 104' right of centerline, up to 69' AGL/356' MSL. Tower 1 NM from DER, 1945' left of centerline, 160' AGL/460' MSL.

FREDERICKSBURG, VA SHANNON (EZF) AMDT 1 11069 (FAA)

TAKE-OFF MINIMUMS: **Rwys 15, 33**, NA-Environmental. **Rwy 6**, 300-2¼ or std. w/min. climb of 270' per NM to 500. **Rwy 24**, 400-3 or std. with a min. climb of 380' per NM to 600.

DEPARTURE PROCEDURE: **Rwy 6**, climb heading 055° to 700 before turning left. **Rwy 24**, climb heading 235° to 700 before turning right.

NOTE: **Rwy 6**, hanger abeam DER, 208' left of centerline, 25' AGL/119' MSL. Trees abeam DER, 154' right of centerline, up to 100' AGL/189' MSL. Powerlines abeam DER, 193' right of centerline, up to 75' AGL/164' MSL. Buildings abeam DER, 237' right of centerline, up to 25' AGL/114' MSL. Vehicle on road 237' from DER, left and right of centerline, up to 15' AGL/104' MSL. Building 449' from DER, 234' left of centerline, 25' AGL/124' MSL. Building 382' from DER, 180' left of centerline, 25' AGL/104' MSL. Light poles beginning 439' from DER, 162' left of centerline, 75' AGL/154' MSL. Powerlines beginning 315' from DER, 308' left of centerline, up to 75' AGL/154' MSL. Powerlines beginning 613' from DER, left and right of centerline, up to 75' AGL/144' MSL. Building 668' from DER, 169' left of centerline, 25' AGL/104' MSL. Tower 4876' from DER, 1092' left of centerline, 210' AGL/250' MSL. **Rwy 24**, trees beginning abeam DER, left and right of centerline, up to 100' AGL/369' MSL. Train 10' from DER, left and right of centerline, 23' AGL/112' MSL. Rising terrain beginning 5161' from DER, left and right of centerline, up to 269' MSL. Powerlines beginning 7248' from DER, left and right of centerline, up to 125' AGL/374' MSL.

31 MAY 2012 to 28 JUN 2012

31 MAY 2012 to 28 JUN 2012

12152

TAKE-OFF MINIMUMS AND (OBSTACLE) DEPARTURE PROCEDURES

NE-3

TAKE-OFF MINIMUMS AND (OBSTACLE) DEPARTURE PROCEDURES

12152

FRIENDLY, MD

POTOMAC AIRFIELD (VKX)
ORIG-A 11097 (FAA)

TAKE-OFF MINIMUMS: **Rwy 6**, 500-2½ or std. w/min. climb of 290' per NM to 700. **Rwy 24**, 300-1.

NOTE: **Rwy 6**, 50' AGL trees 300' left of DER, 75' AGL trees 320' right of DER. Tower 1.9 NM from DER, on centerline 301' AGL/550' MSL. **Rwy 24**, 80' AGL trees 200' right of DER. 75' AGL trees 200' left of DER. 30' AGL hanger 200' from DER, 190' right of centerline.

FRONT ROYAL, VA

FRONT ROYAL-WARREN COUNTY (FRR)
AMDT 1 10210 (FAA)

TAKE-OFF MINIMUMS: **Rwy 10**, 300-1¼ or std. w/min. climb of 415' per NM to 1100. **Rwy 28**, NA-obstacles.

DEPARTURE PROCEDURE: **Rwy 10**, climbing left turn direct MRB VORTAC before proceeding on course.

NOTE: **Rwy 10**, vehicles on roadway beginning 221' from DER, left and right of centerline, up to 17' AGL/736' MSL. Powerlines beginning 835' from DER, left and right of centerline, up to 79' AGL/828' MSL. Trees beginning 1060' from DER, 51' left of centerline, up to 100' AGL/779' MSL. Trees beginning 1660' from DER, 550' right of centerline, up to 100' AGL/939' MSL.

GAITHERSBURG, MD

MONTGOMERY COUNTY AIRPARK

TAKE-OFF MINIMUMS: NOTE: **Rwy 14**, 62' AGL trees 197' right of centerline. **Rwy 32**, 63' AGL trees 335' left of centerline.

GALAX-HILLSVILLE, VA

TWIN COUNTY (HLX)
AMDT 3 12152 (FAA)

TAKE-OFF MINIMUMS: **Rwy 1**, 300-1 or std. w/min. climb of 310' per NM to 2900.

DEPARTURE PROCEDURE: **Rwy 19**, climb heading 187° to 3300 before turning left.

NOTE: **Rwy 1**, vehicles on roadway beginning 122' from DER, left and right of centerline, up to 15' AGL/2674' MSL. Tree 195' from DER, 432' right of centerline, 49' AGL/2669' MSL. Trees beginning 1215' from DER, left and right of centerline, up to 107' AGL/2699' MSL. Trees beginning 2098' from DER, left and right of centerline, up to 105' AGL/2768' MSL. Trees beginning 4071' from DER, 1192' left of centerline, up to 79' AGL/2799' MSL. **Rwy 19**, trees beginning 135' from DER, 455' left of centerline, up to 108' AGL/2748' MSL. Trees beginning 314' from DER, 434' right of centerline, up to 100' AGL/2760' MSL. Tree 925' from DER, 254' left of centerline, 80' AGL/2720' MSL. Trees beginning 1470' from DER, 248' right of centerline, up to 113' AGL/2753' MSL.

GEORGETOWN, DE

SUSSEX COUNTY (GED)
AMDT 3 12096 (FAA)

NOTE: **Rwy 4**, trees abeam DER, 459' left of centerline, up to 74' AGL/118' MSL. Trees beginning 928' from DER, left and right of centerline, up to 89' AGL/131' MSL. **Rwy 22**, poles beginning 680' from DER, 417' left of centerline, up to 32' AGL/76' MSL. Trees 2662' from DER, 130' left of centerline, up to 77' AGL/122' MSL. Trees beginning 1088' from DER, 38' right of centerline, up to 99' AGL/143' MSL. **Rwy 10**, trees beginning 596' from DER, 525' left of centerline up to 100' AGL/142' MSL. Trees 1322' from DER, 225' right of centerline, up to 100' AGL/149' MSL. **Rwy 28**, aircraft on runway 414' from DER, 107' right of centerline, up to 27' AGL/73' MSL. Trees 1375' from DER, 119' right of centerline, up to 100' AGL/159' MSL. Trees 1793' from DER, 715' left of centerline, up to 100' AGL/149' MSL. Watertower 4498' from DER, 219' right of centerline, 134' AGL/181' MSL.

GORDONSVILLE, VA

GORDONSVILLE MUNI (GVE)
ORIG 11349 (FAA)

TAKE-OFF MINIMUMS: **Rwy 5**, 500-2½ or std. w/min. climb of 317' per NM to 1100. **Rwy 23**, 300-2½ or std. w/min. climb of 384' per NM to 700.

DEPARTURE PROCEDURE: **Rwy 5**, climb heading 048° to 1500 before proceeding on course. **Rwy 23**, climb heading 213° to 2000 before turning right.

NOTE: **Rwy 5**, trees beginning 341' from DER, 529' right of centerline, up to 100' AGL/699' MSL. Vehicles on roadway 738' from DER, 477' left of centerline, up to 17' AGL/476' MSL. Trees beginning 789' from DER, 507' left of centerline, up to 100' AGL/939' MSL. Railroad 1111' from DER, 255' right of centerline, up to 23' AGL/482' MSL. **Rwy 23**, trees beginning 300' from DER, 199' right of centerline, up to 100' AGL/739' MSL. Trees beginning 805' from DER, 423' left of centerline, up to 100' AGL/739' MSL. Rising terrain beginning 2.9 NM from DER, 2.5 NM right of centerline, up to 2039' MSL.

HAGERSTOWN, MD

HAGERSTOWN RGNL - RICHARD A. HENSON
FIELD

TAKE-OFF MINIMUMS: **Rwy 2**, 300-1.

DEPARTURE PROCEDURE: **Rwy 9**, climbing left turn to 2500 via 040° heading to intercept the HGR R-084 before departing as cleared. **Rwys 2, 20**, climb to 2000 before turning eastbound.

HOT SPRINGS, VA

INGALLS FIELD (HSP)
AMDT 4 11013 (FAA)

DEPARTURE PROCEDURE: **Rwy 25**, climb heading 247° to 4400 before turning left.

NOTE: **Rwy 7**, tree 52' from DER, 395' left of centerline, 64' AGL/3784' MSL. **Rwy 25**, trees, building, and terrain beginning 172' from DER, 167' left of centerline, up to 60' AGL/3860' MSL. Obstacle light on pipe 376' from DER, 421' left of centerline, up to 28' AGL/3828' MSL.

31 MAY 2012 to 28 JUN 2012

31 MAY 2012 to 28 JUN 2012

12152

TAKE-OFF MINIMUMS AND (OBSTACLE) DEPARTURE PROCEDURES

NE-3

TAKE-OFF MINIMUMS AND (OBSTACLE) DEPARTURE PROCEDURES

12152

INDIAN HEAD, MD MARYLAND

TAKE-OFF MINIMUMS: **Rwy 36**, 300-1¼ or std. w/ min. climb of 360' per NM to 600.

NOTE: **Rwy 18**, trees abeam departure end of runway, 125' left of centerline, up to 100' AGL/256' MSL. Trees 269' from departure end of runway, on centerline, 100' AGL/256' MSL. Trees abeam departure end of runway, 125' right of centerline, up to 100' AGL/256' MSL. Tower 6170' from departure end of runway, 620' right of centerline, 190' AGL/384' MSL. **Rwy 36**, trees 258' from departure end of runway, 309' left of centerline, up to 100' AGL/271' MSL. Tree 567' from departure end of runway, 125' left of centerline, 60' AGL/230' MSL. Rising terrain beginning 73' from departure end of runway, 64' right of centerline, 180' MSL.

JOINT BASE ANDREWS (KADW)

CAMP SPRINGS, MD 12152

TAKE-OFF OBSTACLES: **Rwy 1R**, terrain 41' from DER, 500' left of centerline, 279' MSL. Terrain 46' from DER, 512' left of centerline, 279' MSL. Stadium light 3036' from DER, 1020' right of centerline, 80' AGL/361' MSL. **Rwy 19L**, terrain 0' inward of DER, 450' left of centerline, 253' MSL. Terrain 110' from DER, 529' left of centerline, 255' MSL. Terrain 270' from DER, 581' left of centerline, 260' MSL. **Rwy 19R**, tower 4629' from DER, 1664' right of centerline, 108' AGL/372' MSL. Tower 4713' from DER, 1727' right of centerline, 131' AGL/390' MSL.

JONESVILLE, VA

LEE COUNTY

TAKE-OFF MINIMUMS: **Rwy 7**, std. w/ min. climb of 467' per NM to 3800, or 1900-3 for climb in visual conditions. **Rwy 25**, std. w/ min. climb of 442' per NM to 3500, or 1900-3 for climb in visual conditions.

DEPARTURE PROCEDURE: **Rwys 7, 25**, for climb in visual conditions cross Lee County Airport at or above 3200 before proceeding on course.

NOTE: **Rwy 7**, terrain 116' from departure end of runway, 72' right of centerline, 1439' MSL. Terrain 691' from departure end of runway, 53' right of centerline, 1459' MSL. Terrain 267' from departure end of runway, 190' left of centerline, 1439' MSL. Terrain 479' from departure end of runway, 68' left of centerline, 1459' MSL.

KENBRIDGE, VA

LUNENBURG COUNTY (W31) ORIG 11013 (FAA)

NOTE: **Rwy 2**, trees beginning 219' from DER, left and right of centerline, up to 100' AGL/639' MSL. Vehicles on roadway, beginning 561' from DER, 519' right of centerline, up to 15' AGL/544' MSL. **Rwy 20**, trees at DER, left and right of centerline, up to 100' AGL/599' MSL.

LANGLEY AFB (KLFI) HAMPTON, VA

..... Orig 07354
..... **Rwy 8**, 500-3*
* Or standard with minimum climb of 240 ft/NM to 700.

NOTE: **Rwy 26**, cross DER at or above 10' AGL/18' MSL.

TAKE-OFF OBSTACLES: **Rwy 8**, Boat 2261' from DER, 779' left of centerline, 60' AGL/80' MSL. Boat 2500' from DER, 59' left of centerline, 60' AGL/70' MSL. Vehicle on road 1051' from DER, 702' right of centerline, 15' AGL/43' MSL. Boat 2841' from DER, 641' right of centerline, 60' AGL/80' MSL. Multiple towers 2.0 NM from DER, 1.7 NM right of centerline, 503' AGL/511' MSL. **Rwy 26**, Tree 4050' from DER, 685' left of centerline, 100' AGL/120' MSL. Tree 4840' from DER, 687' left of centerline, 100' AGL/136' MSL. Tree 4044' from DER, 31' left of centerline, 101' AGL/113' MSL. Tree 4153' from DER, 342' right of centerline, 101' AGL/114' MSL. Tree 4037' from DER, 623' right of centerline, 101' AGL/110' MSL. Tree 4377' from DER, 435' right of centerline, 100' AGL/121' MSL. Tree 3805' from DER, 1184' right of centerline, 100' AGL/133' MSL.

LAUREL, DE

LAUREL (N06) AMDT 2 12096 (FAA)

TAKE-OFF MINIMUMS: **Rwy 15**, 600-2¾ or std. w/ min. climb of 286' per NM to 800.

DEPARTURE PROCEDURE: **Rwy 15**, climb heading 148° to 1200 before proceeding on course. **Rwy 33**, climb heading 328° to 1200 before proceeding on course.

NOTE: **Rwy 15**, tower 2.4 NM from DER, 253' left of centerline, 500' AGL/542' MSL.

LAWRENCEVILLE, VA

LAWRENCEVILLE/BRUNSWICK MUNI TAKE-OFF MINIMUMS: **Rwys 6, 24**, NA.

NOTE: **Rwy 18**, trees 1654' from departure end of runway, 772' left of centerline, 88' AGL/407' MSL. Trees 200' from departure end of runway, on centerline, 22' AGL/321' MSL. **Rwy 36**, trees 1487' from departure end of runway, 20' left of centerline, 88' AGL/420' MSL. Trees 113' from departure end of runway, 372' right of centerline, 88' AGL/420' MSL.

LEESBURG, VA

LEESBURG EXECUTIVE (JYO) AMDT 2 10266 (FAA)

DEPARTURE PROCEDURE: **Rwy 35**, climb heading 351° to 1200 before proceeding on course.

NOTE: **Rwy 17**, vehicle on roadway, 320' from DER, 565' left of centerline, up to 15' AGL/414' MSL. Building 167' from DER, 360' left of centerline, 22' AGL/401' MSL. Pole 958' from DER, 373' left of centerline, 32' AGL/421' MSL. Trees beginning 138' from DER, left and right of centerline, up to 100' AGL/464' MSL. **Rwy 35**, terrain 96' from DER, 453' left of centerline, 381' MSL. Tree 1078' from DER, 525' left of centerline, up to 100' AGL/413' MSL. Pole 638' from DER, 642' right of centerline, 49' AGL/428' MSL.

31 MAY 2012 to 28 JUN 2012

31 MAY 2012 to 28 JUN 2012

12152

TAKE-OFF MINIMUMS AND (OBSTACLE) DEPARTURE PROCEDURES

NE-3

TAKE-OFF MINIMUMS AND (OBSTACLE) DEPARTURE PROCEDURES

12152

LEONARDTOWN, MD

ST. MARY'S COUNTY RGNL

NOTES: **Rwy 11**, multiple trees beginning 88' from departure end of runway, 339' left of centerline, up to 80' AGL/205' MSL. Multiple trees beginning 61' from departure end of runway, 193' right of centerline up to 80' AGL/205' MSL. **Rwy 29**, multiple trees beginning 996' from departure end of runway, 227' left of centerline up to 79' AGL/221' MSL. Multiple trees beginning 596' from departure end of runway, 277' right of centerline up to 71' AGL/213' MSL. Multiple towers on buildings beginning 53' from departure end of runway, 400' right of centerline up to 26' AGL/168' MSL. Equipment on building 223' from departure end of runway, 449' right of centerline, 15' AGL/169' MSL. Tower 402' from departure end of runway, 399' right of centerline, 33' AGL/175' MSL. Fence 496' from departure end of runway, 241' right of centerline, 22' AGL/164' MSL.

LOUISA, VA

LOUISA COUNTY/FREEMAN FIELD (LKU)

AMDT 1 10210 (FAA)

NOTE: **Rwy 9**, trees beginning abeam DER, 316' right of centerline, up to 100' AGL/589' MSL. Trees beginning 765' from DER, 644' left of centerline, up to 95' AGL/545' MSL. Trees beginning 889' from DER, 150' right of centerline, up to 59' AGL/519' MSL. **Rwy 27**, trees beginning abeam DER, 350' right of centerline, up to 100' AGL/569' MSL. Trees beginning 212' from DER, 133' right of centerline, up to 100' AGL/569' MSL. Trees beginning 70' from DER, 513' left of centerline, up to 100' AGL/569' MSL. Building 148' from DER, 440' left of centerline, 14' AGL/484' MSL. Trees beginning 587' from DER, left and right of centerline, up to 100' AGL/549' MSL.

LURAY, VA

LURAY CAVERNS (LUA)

TAKE-OFF MINIMUMS: **Rwys 4, 22**, 1000-3
DEPARTURE PROCEDURE: Climb visually so as to cross airport at or above 2000, then continue climb to 5000 via LUA 215° bearing before proceeding on course.

LYNCHBURG, VA

FALWELL

TAKE-OFF MINIMUMS: **Rwy 10**, 1100-2½ for climb in visual conditions. **Rwy 28**, NA-obstacle.
DEPARTURE PROCEDURE: **Rwy 10**, for climb in visual conditions: cross Falwell Airport at or above 1900 before proceeding on course.
NOTE: **Rwy 10**, multiple trees 9' from departure end of runway, 87' right of centerline, up to 100' AGL/899' MSL. Multiple power lines 2896' from departure end of runway, 1192' right of centerline, up to 149' AGL/968' MSL.

LYNCHBURG RGNL/PRESTON GLENN FIELD (LYH)

AMDT 8 08073 (FAA)

TAKE-OFF MINIMUMS: **Rwy 17**, 300-2¼ or std. w/ min. climb of 232' per NM to 1500. **Rwy 35**, std. w/ min. climb of 350' per NM to 3000, or 1700-3 for climb in visual conditions.

DEPARTURE PROCEDURE: **Rwy 4**, climb heading 036° to 2200 before proceeding on course. **Rwy 17**, climb heading 169° to 1800 before turning right. **Rwy 22**, climb heading 216° to 1800 before turning right. **Rwy 35**, climb heading 349° to 3000 before turning left, or for climb in visual conditions: cross Lynchburg Rgnl/Preston Glenn Field at or above 2500' MSL before proceeding on course.

NOTE: **Rwy 4**, trees beginning 2029' from departure end of runway, 62' right of centerline up to 81' AGL/999' MSL. Trees beginning 1422' from departure end of runway, 3' left of centerline up to 76' AGL/995' MSL. Poles beginning 427' from departure end of runway, 483' right of centerline up to 44' AGL/1044' MSL. Obstruction lights on fence beginning 2' from departure end of runway, 500' right of centerline up to 30' AGL/948' MSL. Antenna on building 395' from departure end of runway, 277' right of centerline 15' AGL/954' MSL. Light 606' from departure end of runway, 599' right of centerline, 18' AGL/982' MSL. Building 400' from departure end of runway, 345' right of centerline, 12' AGL/951' MSL. **Rwy 17**, trees beginning 284' from departure end of runway, 77' left of centerline up to 277' AGL/1195' MSL. Trees beginning 265' from departure end of runway, 178' right of centerline up to 57' AGL/969' MSL. Obstruction light on pole 9326' from departure end of runway 333' left of centerline, 270' AGL/1188 MSL. **Rwy 22**, trees beginning 274' from departure end of runway, 245' right of centerline up to 41' AGL/979' MSL. Trees beginning 2616' from departure end of runway, 206' left of centerline up to 41' AGL/979' MSL. Poles beginning 2872' from departure end of runway, 603' right of centerline up to 44' AGL/982' MSL. **Rwy 35**, trees beginning 2955' from departure end of runway, 140' right of centerline up to 96' AGL/1014' MSL. Trees beginning 722' from departure end of runway, 71' left of centerline up to 119' AGL/1037' MSL. Pole 36' from departure end of runway 98' left of centerline, 25' AGL/943' MSL.

31 MAY 2012 to 28 JUN 2012

31 MAY 2012 to 28 JUN 2012

12152

TAKE-OFF MINIMUMS AND (OBSTACLE) DEPARTURE PROCEDURES

NE-3

TAKE-OFF MINIMUMS AND (OBSTACLE) DEPARTURE PROCEDURES

12152

MANASSAS, VA

MANASSAS RGNL/HARRY P. DAVIS FIELD

NOTE: **Rwy 16R**, terrain 64' from departure end of runway, 136' right of centerline, 179' MSL. Numerous trees beginning 242' from departure end of runway, 53' right of centerline up to 100' AGL/279' MSL. Vehicle on road 886' from departure end of runway, 463' right of centerline, 15' AGL/214' MSL. Terrain 33' from departure end of runway, 427' left of centerline, 179' MSL. Numerous trees beginning 688' from departure end of runway, 40' left of centerline, up to 100' AGL/279' MSL. **Rwy 16L**, terrain 56' from departure end of runway, 177' left of centerline, 179' MSL. Numerous trees beginning 1911' from departure end of runway, 158' left of centerline, up to 83' AGL/292' MSL. Terrain 87' from departure end of runway, 386' right of centerline, 179' MSL. Numerous trees beginning 2559' from departure end of runway, 29' right of centerline, up to 100' AGL/273' MSL. **Rwy 34R**, sign 70' from departure end of runway, 91' right of centerline, 6' AGL/196' MSL. Terrain beginning 23' from departure end of runway, 222' right of centerline, up to 199' MSL. Vehicle on road 198' from departure end of runway, 9' right of centerline, 15' AGL/214' MSL. Numerous trees beginning 1860' from departure end of runway, 828' right of centerline, 70' AGL/280' MSL. Numerous trees beginning 2875' from departure end of runway, 484' left of centerline, up to 27' AGL/266' MSL. **Rwy 34L**, terrain 107' from departure end of runway, 409' right of centerline, 189' MSL. Numerous trees beginning 2802' from departure end of runway, 251' right of centerline, up to 27' AGL/266' MSL. Terrain 76' from departure end of runway, 154' left of centerline, 189' MSL. Vehicle on road 366' from departure end of runway, 19' left of centerline, 15' AGL/204' MSL. Numerous trees beginning 1603' from departure end of runway, 249' left of centerline, up to 43' AGL/252' MSL. Tower 3398' from departure end of runway, 1102' left of centerline, 68' AGL/274' MSL.

MARION/WYTHEVILLE, VA

MOUNTAIN EMPIRE

TAKE-OFF MINIMUMS: **Rwy 8**, 300-1. **Rwy 26**, 800-1. DEPARTURE PROCEDURE: **Rwy 8**, climb direct to MK NDB then climb to 5300 via 073° bearing before proceeding on course. **Rwy 26**, climb to 5400 via 253° bearing from MK NDB before proceeding on course.

MARTINSVILLE, VA

BLUE RIDGE (MTV)

AMDT 3 10042 (FAA)

TAKE-OFF MINIMUMS: **Rwy 12**, std. with a min. climb of 249' per NM to 2100 or 1900-3 for climb in visual conditions. **Rwy 30**, std. with a min. climb of 321' per NM to 4300 or 1900-3 for climb in visual conditions. DEPARTURE PROCEDURE: **Rwy 12**, climb heading 125° to 2200 before proceeding on course. For climb in visual conditions: cross Blue Ridge airport at or above 2700 MSL before proceeding on course. **Rwy 30**, for climb in visual conditions: cross Blue Ridge airport at or above 2700 MSL before proceeding on course. NOTE: **Rwy 12**, trees beginning 316' from DER, 320' left of centerline, up to 47' AGL/956' MSL. Trees beginning 38' from DER, 380' right of centerline, 82' AGL/941' MSL. **Rwy 30**, trees beginning 82' from DER, 9' right of centerline, up to 100' AGL/1058' MSL. Vehicle on road 638' from DER, 418' right of centerline, 15' AGL/974' MSL. Obstruction light on DME 1031' from DER, 304' right of centerline, 18' AGL/977' MSL. Fence 947' from DER, 400' right of centerline, 12' AGL/971' MSL. Trees beginning 102' from DER, 94' left of centerline, up to 77' AGL/1047' MSL.

MELFA, VA

ACCOMACK COUNTY

NOTE: **Rwy 3**, multiple trees beginning 41' from departure end of runway, 221' right of centerline, up to 84' AGL/128' MSL. Truck on road 204' from departure end of runway, 231' left of centerline, 15' AGL/61' MSL. Multiple trees beginning 249' from departure end of runway, 14' left of centerline, up to 106' AGL/155' MSL. Truck on road 494' from departure end of runway, 228' left of centerline, 15' AGL/62' MSL. Rod on obstruction light tower 862' from departure end of runway, 402' left of centerline, 55' AGL/99' MSL. **Rwy 21**, multiple trees beginning 27' from departure end of runway, 395' right of centerline, up to 91' AGL/135' MSL. Multiple trees 504' from departure end of runway, 403' left of centerline, up to 110' AGL/144' MSL.

MIDDLETOWN, DE

SUMMIT

TAKE-OFF MINIMUMS: **Rwy 35**, 300-1, or std. with a min. climb of 280' per NM to 400.

MITCHELLVILLE, MD

FREEWAY

TAKE-OFF MINIMUMS: **Rwy 18**, 300-1 or std. with a min. climb of 295' per NM to 500. **Rwy 36**, 300-1 or std. with a min. climb of 500' per NM to 600. NOTE: **Rwy 18**, trees 328' from departure end of runway, 20' AGL/178' MSL. Trees 838' from departure end of runway, 337' left of centerline, 50' AGL/220' MSL. **Rwy 36**, cross departure end of runway at or above 35' AGL/203' MSL. Road/vehicle, 231' from departure end of runway, 17' AGL/185' MSL. Trees 332' from departure end of runway, 20' AGL/188' MSL. Power poles and lines crossing centerline, 2280' from departure end of runway, 186' AGL/345' MSL.

31 MAY 2012 to 28 JUN 2012

31 MAY 2012 to 28 JUN 2012

12152

TAKE-OFF MINIMUMS AND (OBSTACLE) DEPARTURE PROCEDURES

NE-3

TAKE-OFF MINIMUMS AND (OBSTACLE) DEPARTURE PROCEDURES

12152

MONETA, VA

SMITH MOUNTAIN LAKE

TAKE-OFF MINIMUMS: **Rwys 5, 23**, 300-1.
DEPARTURE PROCEDURE: **Rwys 5, 23**, climb straight ahead to 1600 before proceeding on course.

NEWPORT NEWS, VA

NEWPORT NEWS/WILLIAMSBURG INTL

TAKE-OFF MINIMUMS: **Rwy 20**, 300-1½ or standard with a minimum climb of 255' per NM to 300.
NOTE: **Rwy 2**, bush 295' from departure end of runway, 291' right of centerline 22' AGL/62' MSL. Tree 937' from departure end of runway, 603' left of centerline 81' AGL/131' MSL. Pole 1221' from departure end of runway, 487' right of centerline 31' AGL/81' MSL. Tree 1275' from departure end of runway, 517' left of centerline 79' AGL/132' MSL. Multiple trees beginning 1554' from departure end of runway, 298' left of centerline up to 88' AGL/141' MSL. Tree 1686' from departure end of runway, 428' right of centerline 61' AGL/114' MSL. Tree 1849' from departure end of runway, 598' right of centerline 72' AGL/125' MSL. T-L tower 3351' from departure end of runway, 1008' left of centerline 109' AGL/161' MSL. **Rwy 7**, tree 371' from departure end of runway, 588' left of centerline 36' AGL/73' MSL. T-L tower 4120' from departure end of runway, 1324' right of centerline 93' AGL/116' MSL. T-L tower 5625' from departure end of runway, 1345' left of centerline 133' AGL/191' MSL. **Rwy 20**, bush 96' from departure end of runway, 293' left of centerline 22' AGL/52' MSL. Stack 5977' from departure end of runway, 598' left of centerline 186' AGL/227' MSL. **Rwy 25**, tree 694' from departure end of runway, 549' right of centerline 42' AGL/65' MSL. Tree 1020' from departure end of runway, 703' right of centerline 23' AGL/97' MSL. Tree 1622' from departure end of runway, 529' left of centerline 59' AGL/79' MSL. Tree 2654' from departure end of runway, 335' right of centerline 86' AGL/106' MSL. Tree 3435' from departure end of runway, 1125' right of centerline 116' AGL/139' MSL.

NEW MARKET, VA

NEW MARKET (8W2)

ORIG 12152 (FAA)

TAKE-OFF MINIMUMS: **Rwy 6**, 1100-3 w/ min. climb of 376' per NM to 3700 or 2600-3 for climb in visual conditions. **Rwy 24**, 1100-3 w/ min. climb of 290' per NM to 3700 or 2600-3 for climb in visual conditions.
DEPARTURE PROCEDURE: **Rwy 6**, climb heading 048° to 3700 before proceeding on course or for climb in visual conditions: cross New Market airport at or above 3400 MSL before proceeding on course. When executing VCOA, notify ATC prior to departure.
Rwy 24, climb heading 243° to 3700 before proceeding on course or for climb in visual conditions: cross New Market airport at or above 3400 MSL before proceeding on course. When executing VCOA, notify ATC prior to departure.
NOTE: **Rwy 6**, train beginning 2' from DER, 396' left of centerline, up to 23' AGL/1002' MSL. Vehicles on road beginning 57' from DER, left and right of centerline, up to 15' AGL/994' MSL. Trees beginning 754' from DER, 522' left of centerline, up to 100' AGL/1279' MSL. **Rwy 24**, train beginning 11' from DER, 404' right of centerline, up to 23' AGL/1002' MSL. Trees beginning 564' from DER, 257' right of centerline, up to 100' AGL/1319' MSL.

NORFOLK, VA

CHESAPEAKE RGNL (CPK)

AMDT 3 12040 (FAA)

NOTE: **Rwy 5**, trees beginning 143' from DER, left and right of centerline, up to 100' AGL/108' MSL. **Rwy 23**, trees beginning 153' from DER, left and right of centerline, up to 105' AGL/122' MSL.

HAMPTON ROADS EXECUTIVE

TAKE-OFF MINIMUMS: **Rwy 10**, std. w/ min. climb of 217' per NM to 700, or alternatively w/ std. takeoff minimums and a normal 200' per NM climb gradient, takeoff must occur no later than 2100' prior to departure end of runway or 1700-2½ for climb in visual conditions.
DEPARTURE PROCEDURE: **Rwy 2**, climb heading 019° to 1600 before turning west. **Rwy 10**, climb heading 102° to 900 before proceeding on course, or for climb in visual conditions, cross Hampton Roads Executive Airport at or above 1600 before proceeding on course.
Rwy 20, climb heading 199° to 1000 before turning North. **Rwy 28**, climb heading 282° to 1500 before turning North.
NOTE: **Rwy 2**, multiple trees beginning 693' from departure end of runway, 286' left of centerline, up to 100' AGL/124' MSL. Multiple trees beginning 917' from departure end of runway, 422' right of centerline, up to 100' AGL/124' MSL. **Rwy 10**, trees 688' from departure end of runway, 374' left of centerline, 61' AGL/85' MSL. Vehicle on road and multiple trees beginning 750' from departure end of runway, 359' right of centerline, up to 100' AGL/124' MSL. Tower 1.1 NM from departure end of runway, 1424' left of centerline, 175' AGL/192' MSL. **Rwy 20**, vehicle on road and multiple trees beginning 199' from departure end of runway, 250' left of centerline, up to 100' AGL/124' MSL. Vehicle on road and multiple trees beginning 595' from departure end of runway, 8' right of centerline, up to 100' AGL/124' MSL. **Rwy 28**, multiple trees beginning 2711' from departure end of runway, 366' left of centerline, up to 100' AGL/124' MSL. Vehicle on road 3' from departure end of runway, 112' right of centerline, 17' AGL/34' MSL. Multiple trees beginning 2595' from departure end of runway, 362' right of centerline, up to 100' AGL/124' MSL.

31 MAY 2012 to 28 JUN 2012

31 MAY 2012 to 28 JUN 2012

12152

TAKE-OFF MINIMUMS AND (OBSTACLE) DEPARTURE PROCEDURES

NE-3

TAKE-OFF MINIMUMS AND (OBSTACLE) DEPARTURE PROCEDURES

12152

NORFOLK, VA (CON'T)

NORFOLK INTL

NOTES: **Rwy 5**, mobile crane 4091' from departure end of runway, 1249' right of centerline, 150' AGL/163' MSL. Multiple ship masts beginning 2761' from departure end of runway, 22' right of centerline, up to 100' AGL/100' MSL. Multiple ship masts beginning 2564' from departure end of runway, 133' left of centerline, up to 100' AGL/100' MSL. Obstruction light on pole 3978' from departure end of runway, 931' left of centerline, 138' AGL/146' MSL. Multiple towers beginning 4045' from departure end of runway, 982' left of centerline, up to 138' AGL/146' MSL. Obstruction light on pole 2898' from departure end of runway, 811' right of centerline, 84' AGL/98' MSL. Antenna 4115' from departure end of runway, 1585' right of centerline, 117' AGL/131' MSL. Tower 2974' from departure end of runway, 772' right of centerline, 90' AGL/98' MSL, obstruction light on pole 2696' from departure end of runway, 1063' left of centerline, 84' AGL/91' MSL. Bush 29' from departure end of runway, 307' right of centerline, 6' AGL/20' MSL. Tree 1459' from departure end of runway, 159' left of centerline, 41' AGL/55' MSL. Tower 2938' from departure end of runway, 1254' left of centerline, 89' AGL/94' MSL. Tree 1399' from departure end of runway, 201' right of centerline, 38' AGL/52' MSL. Sign 82' from departure end of runway, 301' left of centerline, 2' AGL/19' MSL. Terrain 23' from departure end of runway, 227' left of centerline, 0' AGL/17' MSL. **Rwy 14**, tree 2541' from departure end of runway, 432' right of centerline, 101' AGL/121' MSL. Multiple trees beginning 443' from departure end of runway, 398' left of centerline, up to 75' AGL/95' MSL. Pole 1410' from departure end of runway, 254' right of centerline, 45' AGL/62' MSL. **Rwy 23**, rod on obstruction light pole 1012' from departure end of runway, 650' right of centerline, 56' AGL/73' MSL. Multiple trees beginning 619' from departure end of runway, 584' left of centerline, up to 81' AGL/98' MSL. Obstruction light on pole 1433' from departure end of runway, 738' left of centerline, 54' AGL/71' MSL. Multiple trees beginning 323' from departure end of runway, 504' right of centerline, up to 26' AGL/43' MSL. Pole 2165' from departure end of runway, 840' right of centerline, 57' AGL/74' MSL. **Rwy 32**, multiple trees beginning 17' from departure end of runway, 460' right of centerline, up to 81' AGL/98' MSL. Multiple trees and poles beginning 60' from departure end of runway, 333' left of centerline, up to 87' AGL/92' MSL. Road 207' from departure end of runway, 231' right of centerline, 12' AGL/29' MSL. Multiple obstruction lights on towers 201' from departure end of runway, 135' left of centerline, up to 12' AGL/27' MSL.

NORFOLK NS (CHAMBERS FIELD)(KNGU)

NORFOLK, VA 10322

Rwy 28: 300-1*
 * Or standard with minimum climb of 240'/NM (DoD) or 255'/NM (civil) to 300.
 TAKE-OFF OBSTACLES: **Rwy 10:** Trees with a maximum height of 100' within 1500' of departure end of rwy. Cross departure end of rwy at or above 35' AGL/48' MSL.

OAKLAND, MD

GARRETT COUNTY (2G4)

ORIG 08101 (FAA)

NOTE: **Rwy 9**, Multiple trees beginning 75' from departure end of runway, 94' left of centerline, up to 100' AGL/2939' MSL. Multiple trees beginning 76' from departure end of runway, 47' right of centerline, up to 100' AGL/2939' MSL. **Rwy 27**, Multiple trees beginning 15' from departure end of runway, 334' left of centerline, up to 100' AGL/3019' MSL. Multiple trees beginning 19' from departure end of runway, 107' right of centerline, up to 100' AGL/3019' MSL.

OCEAN CITY, MD

OCEAN CITY MUNI

TAKE-OFF MINIMUMS: **Rwys 2, 32**, 400-2 or std. with a min. climb of 260' per NM to 500.

OCEANA NAS (APOLLO SOUCEK FIELD) (KNTU)

VIRGINIA BEACH, VA. 09351

TAKE-OFF OBSTACLES: **Rwy 5L**, Trees 115' MSL, 3706' from DER, 97' right of centerline. **Rwy 5R**, Trees 115' MSL, 3706' from DER, 603' left of centerline. **Rwy 14L**, Trees 105' MSL, 2792' from DER, 7' left of centerline. **Rwy 14R**, Trees 105' MSL, 2792' from DER, 708' left of centerline.

ORANGE, VA

ORANGE COUNTY

TAKE-OFF MINIMUMS: **Rwy 8**, 300-1.
 DEPARTURE PROCEDURE: **Rwys 8, 26**, climb runway heading to 1500 before turning.

PATUXENT RIVER NAS (TRAPNELL FIELD),(KNKH)

PATUXENT RIVER, MD 09267

Rwy 6, Obstacle identification surface begins 15' above DER.
Rwy 14, Obstacle identification surface begins 35' above DER.
Rwy 20, Obstacle identification surface begins 20' above DER.
Rwy 24, Obstacle identification surface begins 15' above DER.
 TAKE-OFF OBSTACLES: **Rwy 6**, Pole 63' AGL/83' MSL, 1967' from DER, 981' left of centerline. **Rwy 14**, Trees 42' AGL/57' MSL, 190' from DER, 223' left of centerline. Two lane road crossing rwy thld max ht 17' AGL/33' MSL, 193' from DER. Pole 34' AGL/50' MSL, 315' from DER, 198' left of centerline. Trees 43' AGL/59' MSL, 520' from DER, 637' right of centerline. **Rwy 20**, Trees 44' AGL/81' MSL, 1555' from DER, 845' right of centerline. Trees 56' AGL/93' MSL, 2057' from DER, 778' right of centerline. Trees 67' AGL/104' MSL, 2077' from DER, 818' right of centerline. Trees 93' AGL/130' MSL, 3029' from DER, 32' left of centerline. **Rwy 24**, 43' AGL/81' MSL, 1682' from DER, 582' left of centerline. Trees 57' AGL/93' MSL, 2015' from DER, 965' left of centerline. Trees 66' AGL/104' MSL, 2056' from DER, 948' left of centerline.

31 MAY 2012 to 28 JUN 2012

31 MAY 2012 to 28 JUN 2012

12152

TAKE-OFF MINIMUMS AND (OBSTACLE) DEPARTURE PROCEDURES

NE-3

PETERSBURG, VA

DINWIDDIE COUNTY (PTB)
ORIG 07354 (FAA)

TAKE-OFF MINIMUMS: **Rwys 32, 14**, NA-obstacles.
NOTE: **Rwy 5**, numerous trees beginning 911' from departure end of runway, 551' left of centerline, up to 65' AGL/254' MSL. Fence 161' from departure end of runway, 472' right of centerline, 7' AGL/196' MSL. Tree 1031' from departure end of runway, 690' right of centerline, 57' AGL/256' MSL. **Rwy 23**, numerous trees beginning 2615' from departure end of runway, 69' right of centerline, up to 80' AGL/289' MSL. Fence 10' from departure end of runway, 476' left of centerline, 10' AGL/199' MSL. Numerous trees beginning 819' from departure end of runway, 528' left of centerline, up to 72' AGL/281' MSL.

PHILLIPS AAF (KAPG)

ABERDEEN PROVING GROUND, MD . . .
07270

TAKE-OFF OBSTACLES: **Rwy 4**, vehicle on road 1059' from DER, on centerline, 10' AGL/86' MSL. Tree 1126' from DER, 118' left of centerline, 29' AGL/88' MSL. **Rwy 22**, vehicle on road 234' from DER, 27' right of centerline, 10' AGL/49' MSL. Multiple trees beginning 398' from DER, 311' right of centerline, up to 50' AGL/89' MSL. Tree 1094' from DER, 49' left of centerline, 43' AGL/62' MSL.

QUANTICO MCAF (TURNER FIELD)
(KNYG)

QUANTICO, VA. 11069

Rwy 2, Diverse departures authorized only from 090° CW to 204°, 400-2½"
Rwy 20, 300-1**
* Or standard with minimum civil climb of 440 ft/NM to 600, minimum military climb of 410 ft/NM to 500.
** Or standard with minimum civil climb of 400 ft/NM to 600, minimums military climb of 270 ft/NM to 500.
TAKE-OFF OBSTACLES: **Rwy 2**, Multiple trees on rising terrain 100' AGL/296' MSL, 4075' from DER, 803' left of centerline. Multiple trees on rising terrain 100' AGL/197' MSL, 5763' from DER, 106' left of centerline. Multiple trees 100' AGL/240' MSL, 5763' from DER, 509' right of centerline. Smokestack 100' MSL, 2310' from DER, 401' left of centerline. Multiple smokestacks up to 397' MSL, 2 NM from DER, 4175' right of centerline. **Rwy 20**, Terrain 27' MSL, starting 347' from DER, 192' right of centerline. Multiple trees on rising terrain 25' AGL/175' MSL, 5364' from DER, 1900' right of centerline. Multiple trees on rising terrain 25' AGL/195' MSL, 5590' from DER, 1980' right of centerline. Multiple trees on rising terrain 25' AGL/205' MSL, 5880' from DER, 1855' right of centerline.

QUINTON, VA

NEW KENT COUNTY (W96)
AMDT 1 10154 (FAA)

NOTE: **Rwy 10**, trees beginning at DER, left and right of centerline, up to 100' AGL/239' MSL. **Rwy 28**, trees beginning at DER, left and right of centerline, up to 100' AGL/239' MSL.

RICHLANDS, VA

TAZEWELL COUNTY (JFZ)
AMDT 1 11349 (FAA)

TAKE-OFF MINIMUMS: **Rwy 7**, std. w/min. climb of 630' per NM to 3200 or 300-1½ w/ min. climb of 235' per NM to 5000 or 2000-2½ for climb in visual conditions. **Rwy 25**, std. w/ min. climb of 713' per NM to 2900 or 300-1 w/ min. climb of 220' per NM to 5000 or 2000-2 ½ for climb in visual conditions.

DEPARTURE PROCEDURE: **Rwy 7**, climb heading 072° to 5000 before proceeding on course, or for climb in visual conditions: cross Tazewell County airport at or above 4500 before proceeding on course. When executing VCOA, notify ATC prior to departure. **Rwy 25**, climb heading 252° to 5000 before proceeding on course or for climb in visual conditions: cross Tazewell County airport at or above 4500 before proceeding on course. When executing VCOA, notify ATC prior to departure.

NOTE: **Rwy 7**, rising terrain beginning at DER, left and right of centerline, up to 2773' MSL. Vehicles on road beginning at DER, 425' right of centerline, up to 15' AGL/2682' MSL. Trees beginning at DER, left and right of centerline, up to 100' AGL/2939' MSL. **Rwy 25**, trees beginning 116' from DER, left and right of centerline, up to 100' AGL/2828' MSL. DME facility 176' from DER, 256' left of centerline, 28' AGL/2668' MSL. Fence beginning 566' from DER, 363' left of centerline, up to 10' AGL/2734' MSL. Rising terrain beginning 620' from DER, 361' left of centerline, up to 2669' MSL.

31 MAY 2012 to 28 JUN 2012

31 MAY 2012 to 28 JUN 2012

TAKE-OFF MINIMUMS AND (OBSTACLE) DEPARTURE PROCEDURES

12152

RICHMOND, VA

CHESTERFIELD COUNTY

TAKE-OFF MINIMUMS: **Rwy 15**, 800-1' or std. with a min. climb of 280' per NM to 1200. **Rwy 33**, 1200-1', or std. with a min. climb of 220' per NM to 1700.

DEPARTURE PROCEDURE: **Rwy 15**, climb runway heading to 1200' before proceeding on course.

Rwy 33, climb runway heading to 1700' before proceeding on course.

NOTE: **Rwy 15**, 18' AGL pole 1315' from DER, 84' AGL tree 2399' from runway, 304' left of centerline. **Rwy 33**, 84' AGL tree 2399' from departure end of runway, 84' left of centerline.

RICHMOND INTL (RIC)

AMDT 1 10098 (FAA)

TAKE-OFF MINIMUMS: **Rwy 2**, 200-1¼ or std. w/ min. climb of 230' per NM to 400, or alternatively, with standard take-off minimums and a normal 200'/NM climb gradient, take-off must occur no later than 1600' prior to DER.

NOTE: **Rwy 2**, aircraft on surface beginning 3' from DER, 202' right of centerline, up to 65' AGL/232' MSL. Trees and bushes beginning 104' from DER, 223' left of centerline, up to 100' AGL/251' MSL. Trees beginning 2918' from DER, 367' right of centerline, up to 100' AGL/260' MSL. **Rwy 7**, trees beginning 1208' from DER, 798' right of centerline, up to 100' AGL/259' MSL. Trees beginning 1347' from DER, 283' left of centerline, up to 100' AGL/259' MSL. **Rwy 20**, hangar 817' from DER, 665' right of centerline, 43' AGL/212' MSL. Trees beginning 2307' from DER, 1065' left of centerline, up to 100' AGL/235' MSL. Trees beginning 2645' from DER 759' right of centerline, up to 100' AGL/255' MSL. Pole 3226' from DER, 424' right of centerline, 79' AGL/248' MSL. **Rwy 25**, vehicles on road beginning 390' from DER, on centerline, up to 15' AGL/184' MSL. Train on railroad beginning 545' from DER, on centerline, up to 23' AGL/192' MSL. Tower 799' from DER, 562' left of centerline, 16' AGL/185' MSL. Trees beginning 2414' from DER, 285' right of centerline, up to 100' AGL/279' MSL. Multiple poles beginning 3056' from DER, 565' left of centerline, up to 83' AGL/252' MSL. Trees beginning 3176' from DER, 357' left of centerline, up to 100' AGL/269' MSL. **Rwy 34**, aircraft on surface beginning 12' from DER, 192' left of centerline, up to 65' AGL/230' MSL. Hangar and light pole beginning 1103' from DER, 732' left of centerline, up to 41' AGL/200' MSL. Trees beginning 2202' from DER, 1052' right of centerline, up to 100' AGL/232' MSL. Trees beginning 2689' from DER, 998' left of centerline, up to 100' AGL/237' MSL.

RICHMOND/ASHLAND, VA

HANOVER COUNTY MUNI (OFF)

ORIG 09239 (FAA)

NOTE: **Rwy 16**, trees beginning 48' from DER, 479' left of centerline, up to 101' AGL/291' MSL. Poles beginning 1077' from DER, 36' left of centerline, up to 36' AGL/236' MSL. Pole 1120' from DER 166' right of centerline 30' AGL/230' MSL. Trees beginning 1307' from DER, 26' left of centerline, up to 108' AGL/298' MSL. Trees beginning 1431' from DER, 319' right of centerline, up to 104' AGL/294' MSL. **Rwy 34**, road and trees beginning 149' from DER, 345' right of centerline, up to 47' AGL/247' MSL. Road and trees beginning 410' from DER, 386' left of centerline, up to 103' AGL/293' MSL. Poles beginning 660' from DER, on centerline, up to 39' AGL/239' MSL. Trees beginning 1402' from DER, 445' right of centerline, up to 100' AGL/290' MSL. Trees beginning 2714' from DER, 487' right of centerline, up to 104' AGL/304' MSL.

RIDGELY, MD

RIDGELY AIRPARK

NOTE: **Rwy 12**, multiple trees beginning 592' from departure end of runway, 6' left of centerline, up to 100' AGL/160' MSL. Multiple trees beginning 239' from departure end of runway, 338' right of centerline, up to 100' AGL/160' MSL.

ROANOKE, VA

ROANOKE RGNL/ WOODRUM FIELD (ROA) AMDT 9 11237 (FAA)

TAKE-OFF MINIMUMS: **Rwys 6, 34**, NA - obstacles.

Rwy 16, 300-1½ or std. w/min. climb of 220' per NM to 1400, or alternatively, with standard takeoff minimums and a normal 200' per NM climb gradient, takeoff must occur no later than 1600' prior to DER. **Rwy 24**, std. w/min. climb of 242' per NM to 2800 or 2500-3 for climb in visual conditions.

DEPARTURE PROCEDURE: **Rwy 16**, climb heading 156° to intercept the ROA VORTAC R-124 to 4000 before proceeding on course. **Rwy 24**, climb on I-SZK LDA localizer west course to 4200 to DIXY INT/I-SZK 15° DME before proceeding on course. **Rwy 24**, for climb in visual conditions, cross Roanoke Rgnl/ Woodrum Field at or above 3500' MSL before proceeding on course.

NOTE: **Rwy 16**, sign 39' from DER, 251' left of centerline, 24' AGL/1144' MSL, trees beginning 1.12 NM from DER, 2122' left of centerline, up to 76' AGL/1336' MSL. **Rwy 24**, trees beginning 150' from DER, 414' right of centerline, up to 67' AGL/1206' MSL. Bush, sign, trees beginning 41' from DER, 248' left of centerline, up to 100' AGL/1259' MSL.

SALISBURY, MD

SALISBURY-OCEAN CITY WICOMICO RGNL (SBY)

AMDT 1 10322 (FAA)

NOTE: **Rwy 5**, terrain and trees beginning 21' from DER, right and left of centerline, up to 100' AGL/148' MSL. Poles beginning 1213' from DER, 664' right of centerline, up to 36' AGL/85' MSL. Antenna on building 1388' from DER, 49' left of centerline, 36' AGL/86' MSL. **Rwy 14**, trees beginning 1539' from DER, right and left of centerline, up to 100' AGL/153' MSL. **Rwy 23**, trees beginning 22' from DER, right and left of centerline, up to 100' AGL/163' MSL. Vehicles on road beginning 220' from DER, right and left of centerline, up to 17' AGL/60' MSL. Antenna on building 1141' from DER, 304' right of centerline, 47' AGL/83' MSL. **Rwy 32**, trees beginning 14' from DER, right and left of centerline, up to 100' AGL/134' MSL. Hangars beginning 121' from DER, 510' left of centerline, up to 23' AGL/72' MSL. Trailer 396' from DER, 275' left of centerline, 10' AGL/59' MSL.

SALUDA, VA

HUMMEL FIELD

DEPARTURE PROCEDURE: **Rwys 1, 19**, climb runway heading to 1000 before turning on course.

NOTE: **Rwy 1**, 23' AGL tree left of departure end of runway, 65' AGL tree 663' from departure end of runway, 129' left of centerline. **Rwy 19**, 26' AGL tree 237' from departure end of runway, 116' right of centerline.

12152

TAKE-OFF MINIMUMS AND (OBSTACLE) DEPARTURE PROCEDURES

NE-3

TAKE-OFF MINIMUMS AND (OBSTACLE) DEPARTURE PROCEDURES

12152

SOUTH BOSTON, VA

WILLIAM M. TUCK (W78)

AMDT 3A 12012 (FAA)

TAKE-OFF MINIMUMS: **Rwy 1**, 300-1. **Rwys 6, 24**, NA.NOTE: **Rwy 1**, tower 334' from DER, 283' left of centerline, 72' AGL/502' MSL.

SOUTH HILL, VA

MECKLENBURG-BRUNSWICK RGNL (AVC)

AMDT 2 10210 (FAA)

NOTE: **Rwy 1**, train on tracks 118' from DER, 514' left of centerline, 23' AGL/452' MSL. Trees beginning 181' from DER, 408' left of centerline, up to 80' AGL/500' MSL. Trees beginning 1858' from DER, 600' right of centerline, up to 71' AGL/500' MSL. **Rwy 19**, trees beginning 191' from DER, 13' left of centerline, up to 77' AGL/457' MSL. Trees beginning 1176' from DER, 57' right of centerline, up to 76' AGL/500' MSL.

STAFFORD, VA

STAFFORD RGNL

DEPARTURE PROCEDURE: **Rwy 15**, climbing left turn to 2000, intercept and proceed via BRV R-310 to BRV VORTAC, before proceeding on course. **Rwy 33**, climbing left turn to 2000, intercept and proceed via BRV R-306 to BRV VORTAC, before proceeding on course.NOTE: **Rwy 33**, cross departure end of runway at or above 34' AGL/246' MSL.

STAUNTON-WAYNESBORO-

HARRISONBURG, VA

SHENANDOAH VALLEY RGNL (SHD)

AMDT 6 09239 (FAA)

TAKE-OFF MINIMUMS: **Rwy 5**, std. w/ min. climb of 273' per NM to 3800, or 2200-2½' for climb in visual conditions. **Rwy 23**, standard, or 2200-2½' for climb in visual conditions.DEPARTURE PROCEDURE: **Rwy 5**, climb heading 047° to 3400 before turning right, or for climb in visual conditions cross Shenandoah Valley Rgnl airport at or above 3300 before proceeding on course. **Rwy 23**, climb heading 227° to 4400 before proceeding on course, or for climb in visual conditions cross Shenandoah Valley Rgnl airport at or above 3300 before proceeding on course.NOTE: **Rwy 5**, trees 1720' from DER, 635' right of centerline, up to 100' AGL/1279' MSL. **Rwy 23**, tree 679' from DER, 616' left of centerline, 35' AGL/1194' MSL.

STEVENSVILLE, MD

BAY BRIDGE

TAKE-OFF MINIMUMS: **Rwy 29**, 500-3 or std. w/ min. climb of 317' per NM to 800.NOTE: **Rwy 11**, road 354' from departure end of runway, on centerline, 17' AGL/35' MSL. Multiple trees beginning 1471' from departure end of runway, 32' left of centerline, up to 100' AGL/119' MSL.Multiple trees beginning 1485' from departure end of runway, 16' left of centerline, up to 100' AGL/119' MSL. **Rwy 29**, twin bridges 2.25 NM from departure end of runway, 2767' right of centerline, 410' AGL/410' MSL.

SUFFOLK, VA

SUFFOLK EXECUTIVE (SFQ)

AMDT 4 11237 (FAA)

NOTE: **Rwy 4**, trees beginning 4' from DER, right and left of centerline, up to 100' AGL/170' MSL. Transmission pole and T-L towers beginning 1291' from DER, 600' right of centerline, up to 65' AGL/130' MSL. **Rwy 7**, trees beginning 11' from DER, right and left of centerline, up to 100' AGL/169' MSL. Transmission poles and T-L towers beginning 1407' from DER, right and left of centerline, up to 65' AGL/130' MSL. **Rwy 22**, trees beginning 44' from DER, right and left of centerline, up to 100' AGL/174' MSL. Vehicles on road beginning 483' from DER, right and left of centerline, up to 15' AGL/80' MSL. **Rwy 25**, vehicles on road beginning 199' from DER, right and left of centerline, up to 17' AGL/84' MSL. Trees beginning 231' from DER, right and left of centerline, up to 100' AGL/185' MSL.

TANGIER, VA

TANGIER ISLAND (TGI)

ORIG 09015 (FAA)

NOTE: **Rwy 2**, vehicle on road 343' from departure end of runway, on centerline, 15' AGL/19' MSL. Boat masts 638' from departure end of runway, 632' right to 755' left of centerline, up to 63' MSL. **Rwy 20**, buildings beginning 7' from departure end of runway, 206' left of centerline, 45' AGL/50' MSL. Rock wall at departure end of runway, 57' right of centerline, 4' AGL/8' MSL.

TAPPAHANNOCK, VA

TAPPAHANNOCK-ESSEX COUNTY

TAKE-OFF MINIMUMS: **Rwy 10**, 300-1¼ or std. w/ min. climb of 303' per NM to 500. **Rwy 28**, 300-1 or std. w/ min. climb of 366' per NM to 500.NOTE: **Rwy 10**, terrain 6' from departure end of runway, 20' left of centerline, up to 135' MSL. Terrain 29' from departure end of runway, 281' left of centerline, up to 139' MSL. **Rwy 28**, terrain beginning 12' from departure end of runway, 5' right of centerline, up to 151' MSL.

WALLOPS ISLAND, VA

WALLOPS FLIGHT FACILITY (WAL)

ORIG 09127 (FAA)

NOTE: **Rwy 4**, trees beginning 1254' from DER, 741' left of centerline, up to 100' AGL/109' MSL. Trees beginning 1814' from DER, 79' right of centerline, up to 100' AGL/134' MSL. **Rwy 10**, trees beginning 1252' from DER, 818' left of centerline, up to 100' AGL/124' MSL. **Rwy 17**, trees beginning 169' from DER, 218' left of centerline, up to 100' AGL/119' MSL. **Rwy 22**, trees beginning 793' from DER, 315' left of centerline, up to 100' AGL/129' MSL. **Rwy 28**, trees beginning 945' from DER, 495' right of centerline, up to 100' AGL/139' MSL. **Rwy 35**, trees beginning 3' from DER, 394' left of centerline, up to 100' AGL/124' MSL. Trees beginning 21' from DER, 219' right of centerline, up to 100' AGL/124' MSL.

WAKEFIELD, VA

WAKEFIELD MUNI

DEPARTURE PROCEDURE: Climb straight ahead to 500 before proceeding on course.

31 MAY 2012 to 28 JUN 2012

31 MAY 2012 to 28 JUN 2012

12152

TAKE-OFF MINIMUMS AND (OBSTACLE) DEPARTURE PROCEDURES

NE-3

TAKE-OFF MINIMUMS AND (OBSTACLE) DEPARTURE PROCEDURES

12152

WARRENTON, VA

WARRENTON-FAUQUIER (HWY)
ORIG 09099 (FAA)

NOTE: **Rwy 15**, trees 436' from DER, 518' right of centerline, 100' AGL/439' MSL. Vehicle on road 647' from DER, 649' right of centerline, 15' AGL/354' MSL. Trees 1034' from DER, 763' left of centerline, 100' AGL/449' MSL. Trees 1924' from DER, 781' right of centerline, 100' AGL/459' MSL. Trees beginning 2239' from DER, 41' left of centerline, up to 100' AGL/459' MSL. **Rwy 33**, trees beginning 1272' from DER, 59' right of centerline, up to 41' AGL/370' MSL. Trees beginning 2610' from DER, 116' left of centerline, up to 74' AGL/413' MSL.

WASHINGTON, DC

RONALD REAGAN WASHINGTON
NATIONAL (DCA)
AMDT 7 12040 (FAA)

TAKE-OFF MINIMUMS: **Rwy 1**, 600-2 w/min. climb of 270' per NM to 1400 or std. w/min. climb of 500' per NM to 800. **Rwy 4**, 400-3 or std. w/min. climb of 500' per NM to 420. **Rwy 15**, 300-1½ or std. w/min. climb of 205' per NM to 300. **Rwy 19**, 300-1½ or std. w/min. climb of 205' per NM to 300. **Rwy 22**, 500-3 or std. w/min. climb of 280' per NM to 700. **Rwy 33**, std. w/min. climb of 246' per NM to 1100.

DEPARTURE PROCEDURE: **Rwy 1**, climbing left turn as soon as practical to intercept DCA VOR/DME R-328. Maintain 5000 or as assigned. **Rwy 4**, climbing right turn as soon as practical to intercept DCA VOR/DME R-070. Maintain 2000 or as assigned. **Rwy 15**, climb heading 152° to 5000 or as assigned. **Rwy 19**, climb heading 185° to 500 before turning right. Maintain 5000 or as assigned. **Rwy 22**, climb heading 215° to 3000 or as assigned. **Rwy 33**, climb on DCA VOR/DME R-328. Maintain 5000 or as assigned.

NOTE: **Rwy 1**, building 119' from DER, 330' right of centerline, 16' AGL/23' MSL. Fence and trees beginning 261' from DER, 211' left of centerline, up to 62' AGL/72' MSL. Trees beginning 1365' from DER, 331' right of centerline, 47' AGL/51' MSL. Monument 1.7 NM from DER, 1784' left of centerline, 556' AGL/596' MSL. **Rwy 4**, monument 2.4 NM from DER, 656' right of centerline, 307' AGL/377' MSL. **Rwy 15**, tree 1.4 NM from DER, 1290' left of centerline, 74' AGL/223' MSL. **Rwy 22**, poles beginning 500' from DER, on centerline, up to 11' AGL/28' MSL. Trees beginning 1024' from DER, 557' right of centerline, up to 78' AGL/90' MSL. Transmission pole 4732' from DER, 888' right of centerline, 100' AGL/149' MSL. Building 4903' from DER, 651' right of centerline, 97' AGL/144' MSL. Tower 1.3 NM from DER, 1421' left of centerline, 170' AGL/223' MSL. Crane 1.7 NM from DER, 1912' right of centerline, 240' AGL/276' MSL. Building 1.9 NM from DER, 2566' right of centerline, 200' AGL/370' MSL. **Rwy 33**, trees beginning 140' from DER, left and right of centerline, up to 70' AGL/80' MSL. Blast fence beginning 174' from DER, left and right of centerline, up to 9' AGL/24' MSL. Poles beginning 1221' from DER, left and right of centerline, up to 73' AGL/106' MSL. Buildings beginning 1557' from DER, 623' left of centerline, up to 102' AGL/142' MSL. Elevator 1829' from DER, 345' right of centerline, 71' AGL/88' MSL. Flagpole 1.7 NM from DER, 2118' left of centerline, 108' AGL/308' MSL.

NOTE: Prohibited area P-56 1.5 NM north of airport.

WASHINGTON, DC (CON'T)

WASHINGTON DULLES INTL (IAD)
AMDT 1 08325 (FAA)

NOTE: **Rwy 1L**, tower 1918' from departure end of runway, 680' left of centerline, 56' AGL/330' MSL.

Rwy 1C, tree 2814' from departure end of runway, 1030' left of centerline, 86' AGL/345' MSL. **Rwy 1R**, post 12' from departure end of runway, 223' right of centerline, 8' AGL/294' MSL. **Rwy 12**, tree 520' from departure end of runway, 604' left of centerline, 28' AGL/307' MSL.

Rwy 30, trees beginning 161' from departure end of runway, 520' left of centerline, up to 57' AGL/396' MSL. Trees beginning 532' from departure end of runway, 600' right of centerline, up to 64' AGL/383' MSL.

WAYNESBORO, VA

EAGLE'S NEST (W13)
ORIG 11181 (FAA)

TAKE-OFF MINIMUMS: **Rwy 6**, std. w/min. climb of 400' per NM to 3300, or 2100-3 for climb in visual conditions. **Rwy 24**, 300-2 w/min. climb of 400' per NM to 3800 or 2100-3 for climb in visual conditions.

DEPARTURE PROCEDURE: **Rwy 6**, climb heading 061° to 3300 before proceeding on course, or for climb in visual conditions: cross Eagle's Nest Airport at or above 3400 MSL before proceeding on course. **Rwy 24**, climb heading 241° to 3800 before proceeding on course. Or for climb in visual conditions: cross Eagle's Nest Airport at or above 3400 MSL before proceeding on course.

NOTE: **Rwy 6**, hangar at DER, 220' left of centerline, 30' AGL/1469' MSL. Trees beginning 35' from DER, 158' right of centerline, up to 100' AGL/1539' MSL. Vehicles on road beginning 131' from DER, 201' left of centerline, up to 15' AGL/1454' MSL. Trees beginning 263' from DER, 189' left of centerline, up to 100' AGL/1539' MSL. Towers beginning 1.41 NM from DER, 2539' right of centerline, 300' AGL/1670' MSL. **Rwy 24**, Trees beginning at DER left and right of centerline up to 100' AGL/1579' MSL. Trees beginning 1259' from DER, 143' right of centerline, up to 100' AGL/1730' MSL.

WEST POINT, VA

MIDDLE PENINSULA RGNL (FYJ)
ORIG 08157 (FAA)

NOTE: **Rwy 10**, multiple trees beginning 86' from departure end of runway, left and right of centerline, up to 100' AGL/129' MSL. **Rwy 28**, multiple trees beginning 33' from departure end of runway, left and right of centerline, up to 100' AGL/119' MSL. Ship mast 3427' from departure end of runway, left and right of centerline, 135' AGL/135' MSL.

12152

TAKE-OFF MINIMUMS AND (OBSTACLE) DEPARTURE PROCEDURES

NE-3

TAKE-OFF MINIMUMS AND (OBSTACLE) DEPARTURE PROCEDURES

12152

WESTMINSTER, MD

CARROLL COUNTY RGNL/JACK B.
POAGE FIELD (DMW)
AMDT 5 10322

TAKE-OFF MINIMUMS: **Rwy 16**, 400-2¼ or std. w/min. climb of 215' per NM to 1300.

NOTE: **Rwy 16**, fence 188' from DER, 527' left of centerline, 10' AGL/789' MSL. Vehicle on road 558' from DER, 620' right of centerline, 15' AGL/794' MSL. Trees beginning 786' from DER, 657' left of centerline, up to 100' AGL/879' MSL. Tree 1882' from DER, 494' right of centerline, 100' AGL/879' MSL. Tower 2.3 NM from DER, 2042' left of centerline, 195' AGL/1144' MSL. **Rwy 34**, rising terrain and trees beginning 105' from DER, 123' left of centerline, up to 100' AGL/902' MSL. Trees beginning 967' from DER, 395' right of centerline, up to 100' AGL/868' MSL.

CLEARVIEW AIRPARK (2W2)
ORIG 09239 (FAA)

TAKE-OFF MINIMUMS: **Rwy 32**, 300-2¼ or std. w/min. climb of 290' per NM to 1200.

NOTE: **Rwy 14**, vehicles and aircraft on road/taxiway 14' from DER, 47' right to left of centerline, 15' AGL/834' MSL. Trees beginning 35' from DER, 200' left of centerline, up to 100' AGL/939' MSL. Trees beginning 21' from DER, 90' right of centerline, up to 100' AGL/919' MSL. **Rwy 32**, vehicle on road 191' from DER, 516' left of centerline, 15' AGL/774' MSL. Trees beginning 8' from DER, 24' left of centerline, up to 100' AGL/959' MSL. Trees beginning 60' from DER, 50' right of centerline, up to 100' AGL/859' MSL.

WILLIAMSBURG, VA

WILLIAMSBURG-JAMESTOWN (JGG)
AMDT 2 11349 (FAA)

DEPARTURE PROCEDURE: **Rwy 31**, climb heading 311° to 700 before turning right.

NOTE: **Rwy 13**, boat on creek 468' from DER, 608' left of centerline, up to 35' AGL/35' MSL. Homes beginning 1399' from DER, 278' left of centerline, up to 25' AGL/94' MSL. Trees beginning 712' from DER, left and right of centerline, up to 100' AGL/169' MSL. **Rwy 31**, aircraft on tarmac 2' from DER, 209' right of centerline, up to 20' AGL/79' MSL. Hanger 418' from DER, 268' right of centerline, up to 25' AGL/84' MSL. Multiple buildings and homes beginning 320' from DER, left and right of centerline, up to 30' AGL/109' MSL. Multiple trees beginning 1' from DER, left and right of centerline, up to 100' AGL/199' MSL.

WILMINGTON, DE

NEW CASTLE

TAKE-OFF MINIMUMS: **Rwy 19**, 300-1 or std. w/min. climb of 266' per NM to 300.

NOTE: **Rwy 1**, multiple trees beginning 751' from departure end of runway, 32' left of centerline, up to 59' AGL/120' MSL, tree 1219' from departure end of runway, 482' right of centerline, 57' AGL/118' MSL, bush 118' from departure end of runway, 385' left of centerline, 4' AGL/65' MSL. **Rwy 9**, multiple trees beginning 1229' from departure end of runway, 30' right of centerline up to 62' AGL/133' MSL, tree 975' from departure end of runway, 66' left of centerline, 53' AGL/124' MSL, light pole 948' from departure end of runway, 596' right of centerline, 44' AGL/115' MSL, tree 1740' from departure end of runway, 458' left of centerline, 83' AGL/134' MSL, light pole 945' from departure end of runway, 316' right of centerline, 38' AGL/109' MSL. **Rwy 19**, antenna on obstruction light tower 4469' from departure end of runway, 1684' right of centerline, 153' AGL/228' MSL, tree 1575' from departure end of runway, 850' right of centerline, 45' AGL/120' MSL, obstruction light on sign 971' from departure end of runway, 448' left of centerline, 28' AGL/103' MSL. **Rwy 27**, tree 697' from departure end of runway, 533' left of centerline, 68' AGL/147' MSL. Tree 1110' from departure end of runway, 584' right of centerline, 38' AGL/117' MSL, pole 793' from departure end of runway, 615' right of centerline, 28' AGL/107' MSL, bush 408' from departure end of runway, 415' left of centerline, 12' AGL/91' MSL. **Rwy 32**, tree 711' from departure end of runway, 207' right of centerline, 29' AGL/104' MSL, tree 1162' from departure end of runway, 83' right of centerline, 32' AGL/107' MSL.

WINCHESTER, VA

WINCHESTER RGNL (OKV)
ORIG-A 11097 (FAA)

TAKE-OFF MINIMUMS: **Rwy 32**, 800-2 or std. with a min. climb of 210' per NM to 1700.

DEPARTURE PROCEDURE: **Rwy 32**, climb runway heading to 1700 before turning on course.

NOTE: **Rwy 14**, trees beginning 496' from DER, 587' right of centerline, up to 66' AGL/765' MSL. Trees beginning 591' from DER, 561' left of centerline, up to 21' AGL/730' MSL. **Rwy 32**, trees beginning 374' from DER, 9' right of centerline, up to 66' AGL/805' MSL. Trees beginning 86' from DER, 27' left of centerline, up to 55' AGL/794' MSL.

WISE, VA

LONESOME PINE (LNP)
AMDT 3 10210 (FAA)

DEPARTURE PROCEDURE: **Rwy 6**, climb on heading 062° to 3600 before proceeding on course.

Rwy 24, climb on heading 247° to 4900 before proceeding on course.

NOTE: **Rwy 6**, trees beginning 775' from DER, left and right of centerline, up to 100' AGL/2801' MSL. Terrain beginning 86' from DER, left and right of centerline, up to 2728' MSL. **Rwy 24**, trees beginning 159' from DER, left and right of centerline, up to 100' AGL/2794' MSL. Obstruction light on LOC 308' from DER 22' left of centerline, 8' AGL/2678' MSL. Obstruction light on LOC 304' from DER 22' right of centerline, 8' AGL/2678' MSL. Obstruction light on LOC/DME 306' from DER, 189' right of centerline, 15' AGL/2685' MSL. Terrain 159' from DER, 363' left of centerline, 2676' MSL.

31 MAY 2012 to 28 JUN 2012

31 MAY 2012 to 28 JUN 2012

12152

TAKE-OFF MINIMUMS AND (OBSTACLE) DEPARTURE PROCEDURES

NE-3