

NDB BBB	APP CRS	Rwy Idg	4000
<b>239</b>	<b>148°</b>	TDZE	1039
		Apt Elev	1039

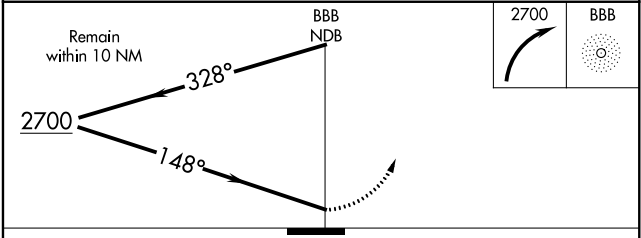
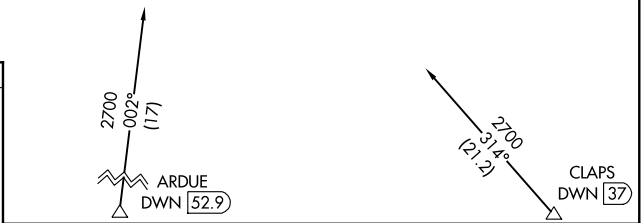
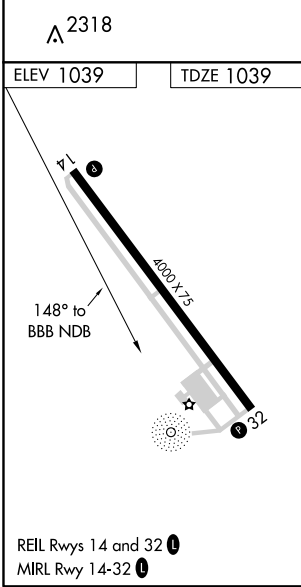
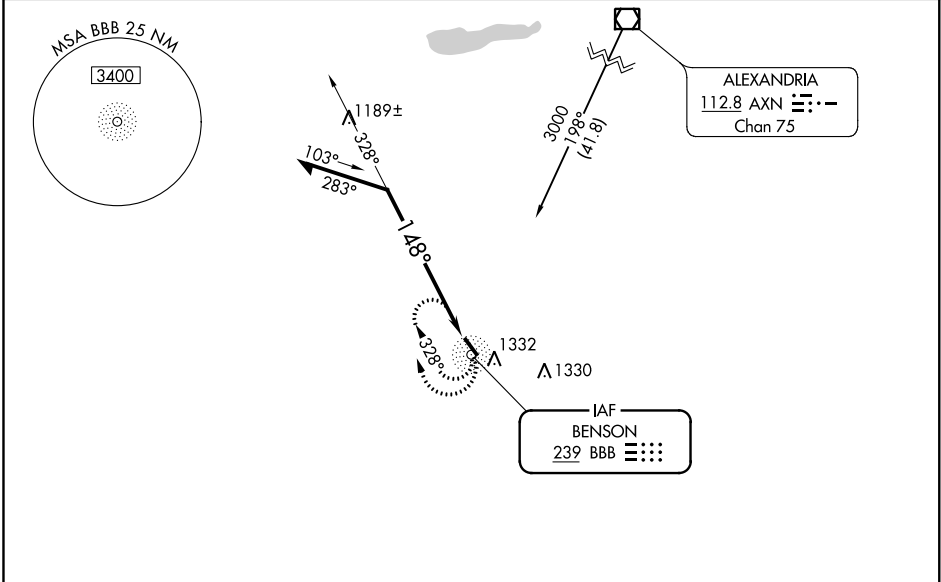
# NDB RWY 14

BENSON MUNI (BBB)

**NA** If local altimeter setting not received, use Appleton altimeter setting and increase all MDAs 40 feet.

MISSED APPROACH: Climbing right turn to 2700 in BBB NDB holding pattern.

AWOS-3 <b>118.45</b>	MINNEAPOLIS CENTER <b>125.5 323.1</b>	UNICOM <b>122.8 (CTAF)</b>
-------------------------	--	-------------------------------



CATEGORY	A	B	C	D
S-14	1700-1	661 (700-1)	NA	
CIRCLING	1740-1	701 (800-1)	NA	

NC-1, 07 DEC 2017 to 04 JAN 2018

NC-1, 07 DEC 2017 to 04 JAN 2018

WAAS CH <b>49210</b> W14A	APP CRS <b>138°</b>	Rwy Idg <b>4000</b> TDZE <b>1039</b> Apt Elev <b>1039</b>
---------------------------------	------------------------	---

# RNAV (GPS) RWY 14

BENSON MUNI (BBB)

**⚠** For uncompensated Baro-VNAV systems, LNAV/VNAV NA below -17°C (2°F) or above 54°C (130°F).  
**⚠** DME/DME RNP-0.3 NA.  
 Baro-VNAV and VDP NA when using Appleton altimeter setting.  
 When local altimeter setting not received, use Appleton altimeter setting and increase all DA and MDA 40 feet, increase Circling Cat B visibility ¼ mile.

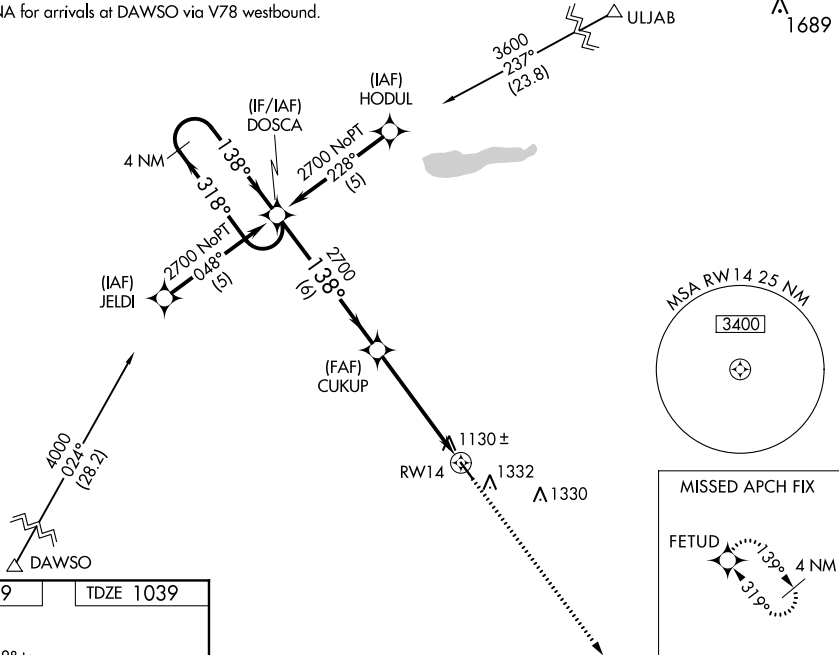
MISSED APPROACH: Climb to 2700  
 direct FETUD and hold.

AWOS-3  
**118.45**

MINNEAPOLIS CENTER  
**125.5 323.1**

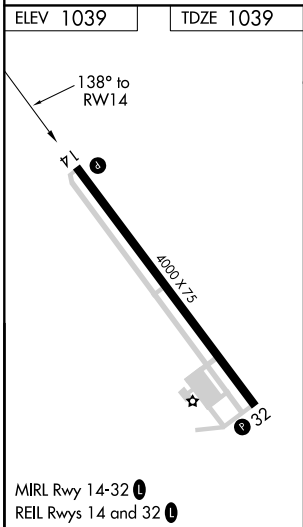
UNICOM  
**122.8 (CTAF) ①**

Procedure NA for arrivals at DAWSO via V78 westbound.



NC-1, 07 DEC 2017 to 04 JAN 2018

NC-1, 07 DEC 2017 to 04 JAN 2018



4 NM Holding Pattern	DOSCA	CUKUP	2700	FETUD
	← 318°	→ 138°	↑	✧
GP 3.00° TCH 40	← 138°	→ 138°	* 1.5 NM to RWY 14	* LNAV only
	← 6 NM	← 3.5 NM	← 1.5 NM	
CATEGORY	A	B	C	D
LPV DA	1382-1¼	343 (400-1¼)		NA
LNAV/VNAV DA	1426-1½	387 (400-1½)		NA
LNAV MDA	1540-1	501 (600-1)		NA
CIRCLING	1740-1	701 (800-1)		NA

WAAS CH <b>99710</b> <b>W32A</b>	APP CRS <b>319°</b>	Rwy Idg TDZE Apt Elev	<b>4000</b> <b>1039</b> <b>1039</b>
--	------------------------	-----------------------------	---

# RNAV (GPS) RWY 32

BENSON MUNI (BBB)

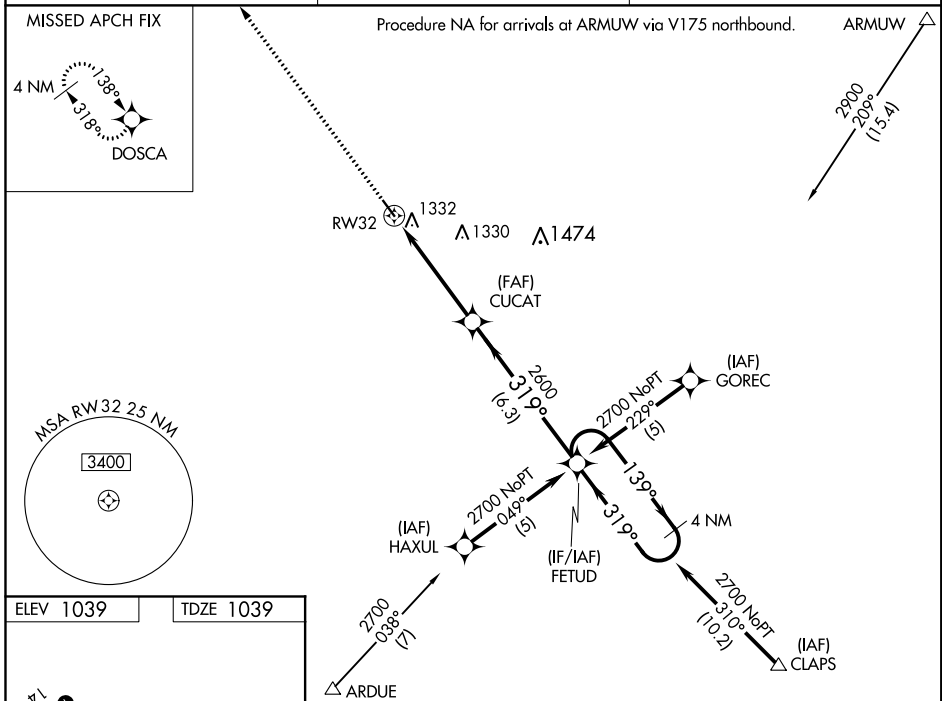
**⚠** For uncompensated Baro-VNAV systems, LNAV/VNAV NA below -17°C (2°F) or above 54°C (130°F).  
**⚠** DME/DME RNP-0.3 NA. Visibility reduction by helicopters NA.  
 Baro-VNAV NA when using Appleton altimeter setting.  
 When local altimeter setting not received, use Appleton altimeter setting and increase all DA and MDA 40 feet, increase Circling Cat B visibility ¼ mile.

MISSED APPROACH: Climb to 2700 direct DOSCA and hold.

AWOS-3  
**118.45**

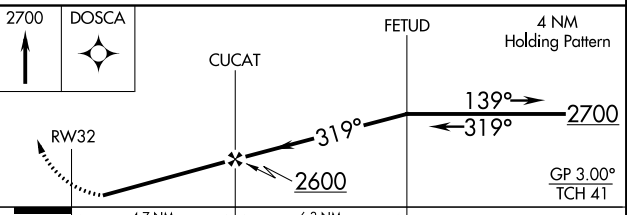
MINNEAPOLIS CENTER  
**125.5 323.1**

UNICOM  
**122.8 (CTAF)** **📻**



NC-1, 07 DEC 2017 to 04 JAN 2018

NC-1, 07 DEC 2017 to 04 JAN 2018



CATEGORY	A	B	C	D
LPV DA	1426-1½	387 (400-1½)		NA
LNAV/VNAV DA	1710-2½	671 (700-2½)		NA
LNAV MDA	1700-1	661 (700-1)		NA
CIRCLING	1740-1	701 (800-1)		NA