

# DEER PARK TWO ARRIVAL

BRADLEY APP CON  
123.95 348.3  
ATIS  
118.15

BARNES  
MUNI

WESTOVER ARB/  
METROPOLITAN

BRADLEY  
INTL

LOCALIZER 111.1

I-BDL  
Chan 48

N41°57.30'-W72°39.99'

BRISS  
N41°42.16'  
W73°01.00'

MADISON

110.4 MAD  
Chan 41

N41°18.83'-W72°41.53'

Expect 11000.

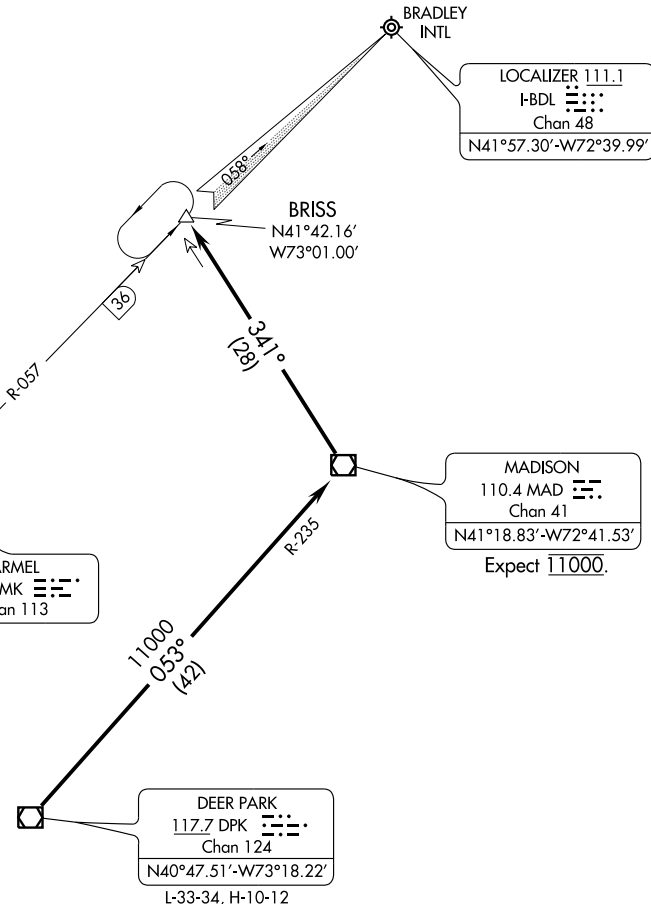
CARMEL  
116.6 CMK  
Chan 113

DEER PARK

117.7 DPK  
Chan 124

N40°47.51'-W73°18.22'

L-33-34, H-10-12



NOTE: Chart not to scale.

## ARRIVAL ROUTE DESCRIPTION

From over DPK VORTAC via DPK R-053 and MAD R-235 to MAD VOR/DME, thence from MAD VOR/DME via MAD R-341 to BRISS INT. Expect radar vectors to final approach course prior to BRISS INT when landing other than Bradley Runway 6.

NE-1, 31 MAY 2012 to 28 JUN 2012

NE-1, 31 MAY 2012 to 28 JUN 2012

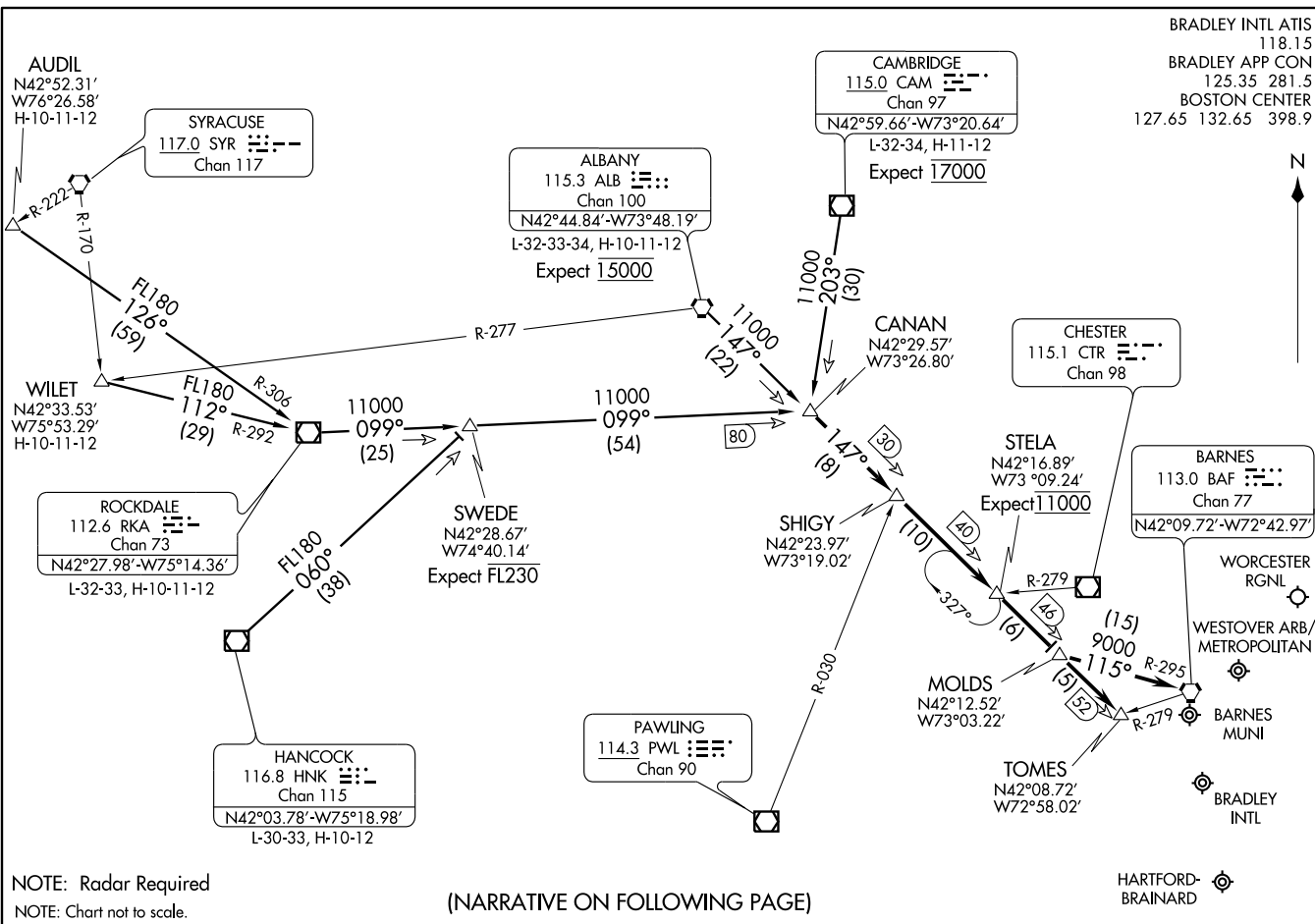
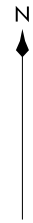
STELA ONE ARRIVAL  
(STELA,STELA1) 12152

(STELA,STELA1) 12152  
STELA ONE ARRIVAL

ST-460 (FAA)

WINDSOR LOCKS, CONNECTICUT

BRADLEY INTL ATIS 118.15  
BRADLEY APP CON 125.35 281.5  
BOSTON CENTER 127.65 132.65 398.9



NOTE: Radar Required  
NOTE: Chart not to scale.

(NARRATIVE ON FOLLOWING PAGE)

WINDSOR LOCKS, CONNECTICUT

STELA ONE ARRIVAL

ARRIVAL ROUTE DESCRIPTION

ALBANY TRANSITION (ALB.STELA1): From over ALB VORTAC via ALB R-147 to CANAN INT. Thence. . . .

AUDIL TRANSITION (AUDIL.STELA1): From over AUDIL INT via RKA R-306 to RKA VOR/DME, then via RKA R-099 to CANAN INT. Thence. . . .

CAMBRIDGE TRANSITION (CAM.STELA1): From over CAM VOR/DME via CAM R-203 to CANAN INT. Thence. . . .

HANCOCK TRANSITION (HNK.STELA1): From over HNK VOR/DME via HNK R-060 to SWEDE INT, then via RKA R-099 to CANAN INT. Thence. . . .

WILET TRANSITION (WILET.STELA1): From over WILET INT via RKA R-292 to RKA VOR/DME, then via RKA R-099 TO CANAN INT. Thence. . . .

KBDL and KHFD ARRIVALS: From over CANAN INT via ALB R-147 to TOMES INT. Expect radar vectors to final approach course prior to TOMES INT.

KBAF, KCEF and KORH ARRIVALS: From over CANAN INT via ALB R-147 to MOLDS INT. Then via BAF R-295 to BAF VORTAC. Expect radar vectors to final approach course prior to BAF VORTAC.

NE-1, 31 MAY 2012 to 28 JUN 2012

NE-1, 31 MAY 2012 to 28 JUN 2012