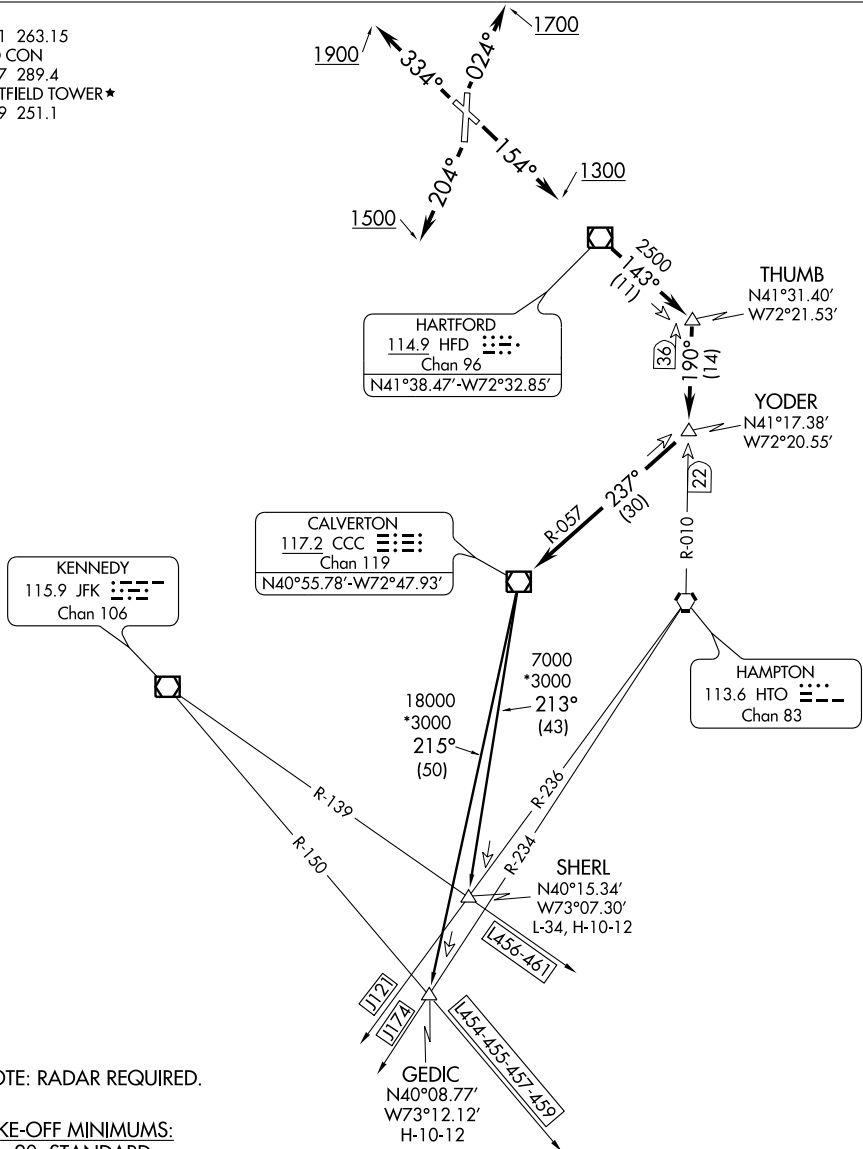


ATIS  
127.1 263.15  
GND CON  
121.7 289.4  
WESTFIELD TOWER★  
118.9 251.1



NE-1, 31 MAY 2012 to 28 JUN 2012

NE-1, 31 MAY 2012 to 28 JUN 2012

NOTE: RADAR REQUIRED.

TAKE-OFF MINIMUMS:

- Rwy 20, STANDARD.
- Rwy 2, 300-1½ or STANDARD with a minimum climb of 204 feet per NM to 600, or alternatively, with standard takeoff minimums and a normal 200 FT/NM climb gradient, takeoff must occur no later than 1200 feet prior to DER.
- Rwy 15, 400-2 or STANDARD with a minimum climb of 404 feet per NM to 700.
- Rwy 33, STANDARD with a minimum climb of 323 feet per NM to 2000.

NOTE: Chart not to scale.

(NARRATIVE ON FOLLOWING PAGE)

# COASTAL THREE DEPARTURE



## DEPARTURE ROUTE DESCRIPTION

NOTE: INITIAL DEPARTURE HEADINGS ARE PREDICATED ON AVOIDING NOISE SENSITIVE AREAS. FLIGHT CREW AWARENESS AND COMPLIANCE IS IMPORTANT IN MINIMIZING NOISE IMPACTS ON SURROUNDING COMMUNITIES.

NOTE: APPROPRIATE DEPARTURE CONTROL FREQUENCY TO BE ASSIGNED BY ATC.

TAKE-OFF RWY 2: Climb heading 024° to 1700, expect radar vectors to HFD VOR/DME, thence . . .

TAKE-OFF RWY 15: Climb heading 154° to 1300, expect radar vectors to HFD VOR/DME, thence . . .

TAKE-OFF RWY 20: Climb heading 204° to 1500, expect radar vectors to HFD VOR/DME, thence . . .

TAKE-OFF RWY 33: Climb heading 334° to 1900, expect radar vectors to HFD VOR/DME, thence . . .

. . . . From over HFD VOR/DME proceed via HFD R-143 to THUMB INT, then proceed via the HTO R-010 to YODER INT, then proceed via CCC R-057 to CCC VOR/DME. Then via (transition) or (assigned route). Maintain assigned altitude. Expect clearance to requested flight level ten minutes after departure.

GEDIC TRANSITION (CSTL3.GEDIC): From over CCC VOR/DME via CCC R-215 to GEDIC.

SHERL TRANSITION (CSTL3.SHERL): From over CCC VOR/DME via CCC R-213 to SHERL.

### TAKE-OFF OBSTACLE NOTES:

Rwy 2: Trees beginning 1186' from DER, 144' left of centerline up to 100' AGL/385' MSL. Trees beginning 1098' from DER, 431' right of centerline, up to 100' AGL/465' MSL.

Rwy 15: Trees beginning 245' from DER, 74' left of centerline, up to 100' AGL/576' MSL. Bush 245' from DER, 285' left of centerline, up to 20' AGL/265' MSL. OL on tank 4773' from DER, 1315' left of centerline, 190' AGL/440' MAL. Trees beginning 360' from DER, 8' right of centerline, up to 100' AGL/508' MSL.

Rwy 20: Trees beginning 18' from DER, 47' left of centerline, up to 100' AGL/321' MSL. Trees beginning 541' from DER, 38' right of centerline, up to 100' AGL/329' MSL.

Rwy 33: Trees and bushes beginning 151' from DER, 138' left of centerline, up to 100' AGL/483' MSL. OL on radio tower and towers beginning 1.5 NM from DER, 2641' left of centerline, up to 305' AGL/545' MSL. Trees beginning 311' from DER, 35' right of centerline, up to 100' AGL/513' MSL.

NE-1, 31 MAY 2012 to 28 JUN 2012

NE-1, 31 MAY 2012 to 28 JUN 2012