

ALTUS, OKLAHOMA

AL-5659 (FAA)

WAAS CH 86216 W17A	APP CRS 172°	Rwy Idg TDZE 1433 Apt Elev 1433	5501
--	------------------------	---	-------------

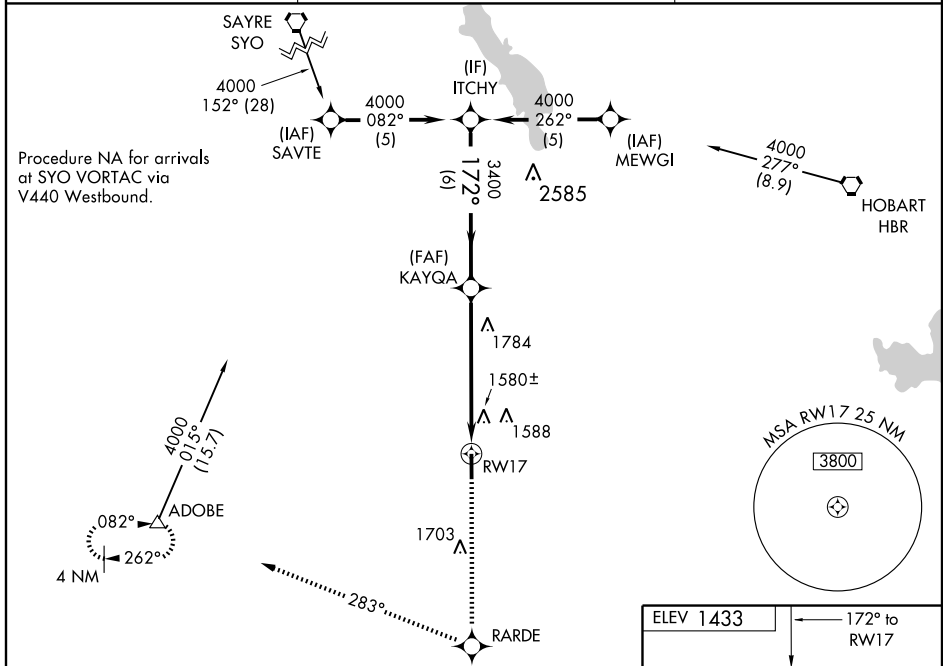
RNAV (GPS) RWY 17

ALTUS/QUARTZ MOUNTAIN RGNL (A.X.S)

⚠ For uncompensated Baro-VNAV systems, LNAV/VNAV NA below -17°C (2°F) or above 54°C (130°F). DME/DME RNP-0.3 NA. When local altimeter setting not received, use Hobart altimeter setting and increase all DA 71 feet and all MDA 80 feet, increase LPV and LNAV/VNAV all Cats, LNAV Cat B and Circling Cat B visibility ¼ mile, increase LNAV Cat C and Circling Cat C visibility ½ mile. Baro-VNAV and VDP NA when using Hobart altimeter setting.

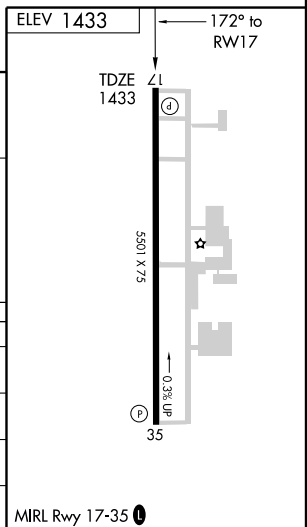
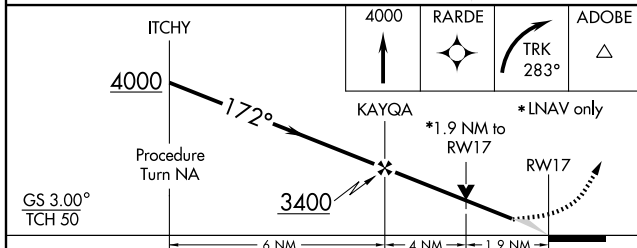
MISSED APPROACH: Climb to 4000 direct RARDE and right turn via track 283° to ADOBE and hold.

AWOS-3 118.825	ALTUS APP CON* 125.1 259.3	UNICOM 122.8 (CTAF)
--------------------------	--------------------------------------	-------------------------------



SC-1, 31 MAY 2012 to 28 JUN 2012

SC-1, 31 MAY 2012 to 28 JUN 2012



CATEGORY	A	B	C	D
LPV DA	1713-1	280 (300-1)		NA
LNAV/VNAV DA	1925-1¾	492 (500-1¾)		NA
LNAV MDA	2100-1	667 (700-1)	2100-1¾ 667 (700-1¾)	NA
CIRCLING	2100-1	667 (700-1)	2100-1¾ 667 (700-1¾)	NA

ALTUS, OKLAHOMA
Orig 09267

34°42'N - 99°20'W

ALTUS/QUARTZ MOUNTAIN RGNL (A.X.S) RNAV (GPS) RWY 17

WAAS CH 93914 W35A	APP CRS 352°	Rwy Idg TDZE Apt Elev	5501 1423 1433
--	------------------------	-----------------------------	---

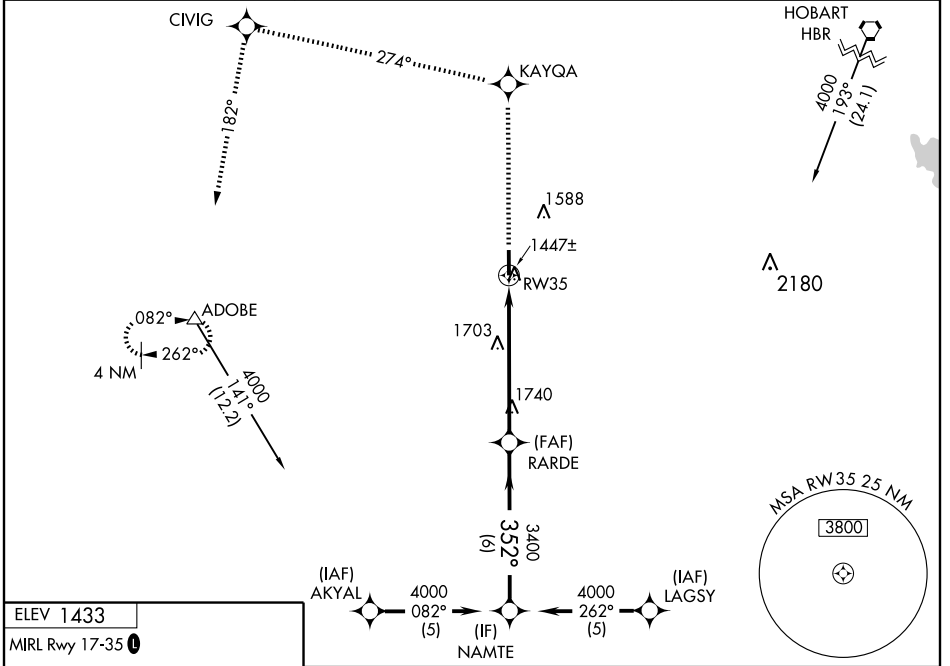
RNAV (GPS) RWY 35

ALTUS/QUARTZ MOUNTAIN RGNL (A.X.S)

⚠ For uncompensated Baro-VNAV systems, LNAV/VNAV NA below -17°C (2°F) or above 54°C (130°F). DME/DME RNP-0.3 NA. When local altimeter setting not received, use Hobart altimeter setting and increase all DA 71 feet and all MDA 80 feet, increase LPV and LNAV/VNAV all Cats, LNAV Cat C and Circling Cat C visibility ¼ mile. Baro-VNAV and VDP NA when using Hobart altimeter setting.

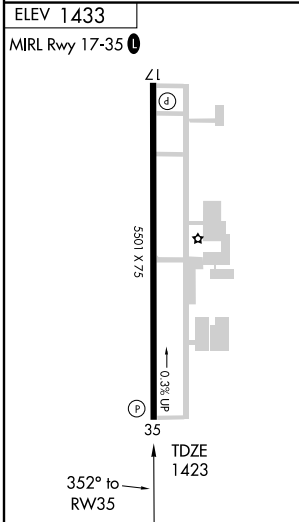
MISSED APPROACH: Climb to 4000 direct KAYQA and via track 274° to CIVIG and left turn via track 182° to ADOBE and hold.

AWOS-3 118,825	ALTUS APP CON* 125.1 259.3	UNICOM 122.8 (CTAF) 0
--------------------------	--------------------------------------	---------------------------------



SC-1, 31 MAY 2012 to 28 JUN 2012

SC-1, 31 MAY 2012 to 28 JUN 2012



4000	KAYQA	TRK 274°	CIVIG	TRK 182°	ADOBE	NAMTE
↑	◆	↖	◆	↖	△	
* LNAV only						
RW35		* 1.8 NM to RW35		RARDE	NAMTE	
↖		↖		↖	↖	
1.8 NM		4.2 NM		6 NM		
352°		3400		4000		
				Procedure Turn NA		
				GS 3.00°		
				TCH 50		
CATEGORY	A	B	C	D		
LPV DA	1673-1		250 (300-1)		NA	
LNAV/VNAV DA	1717-1		294 (300-1)		NA	
LNAV MDA	2040-1	617 (700-1)		2040-1¾ 617 (700-1¾)		NA
CIRCLING	2040-1	607 (700-1)		2040-1¾ 607 (700-1¾)		NA

ALTUS, OKLAHOMA

AL-5659 (FAA)

VOR-A

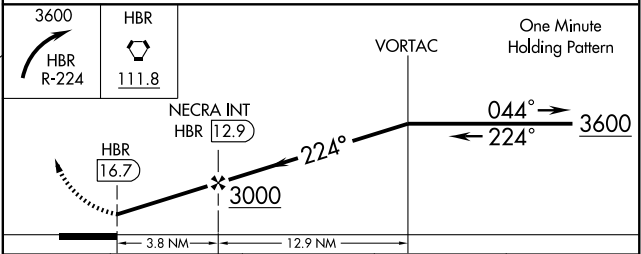
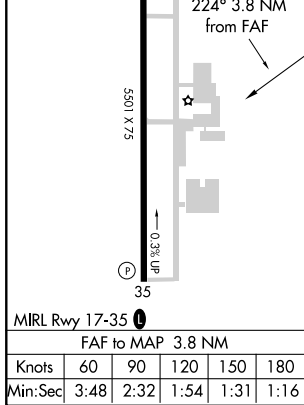
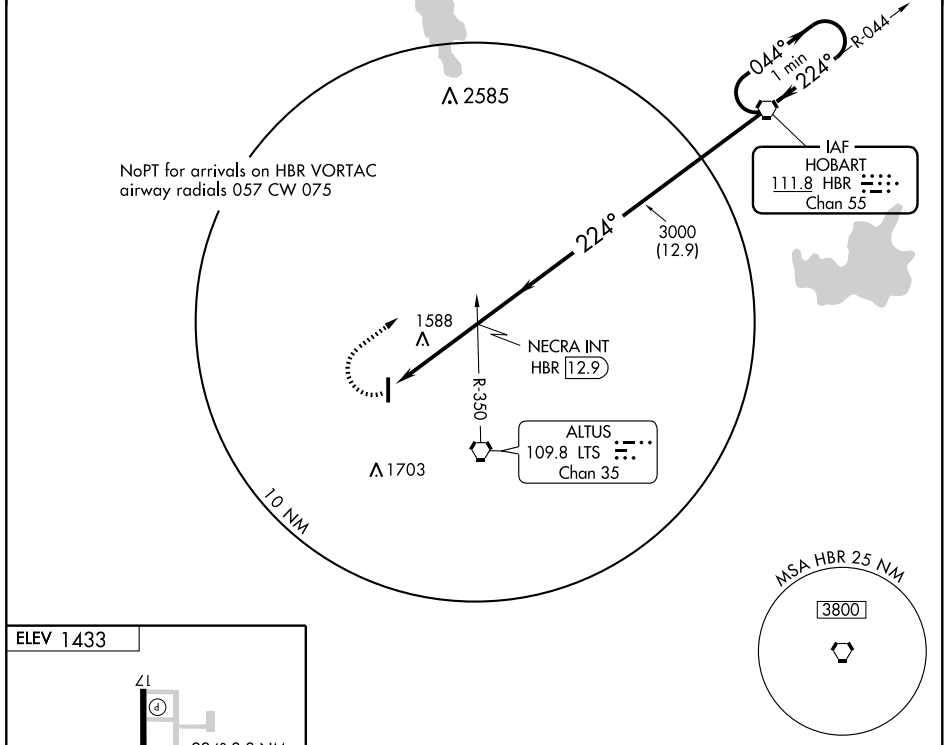
ALTUS/QUARTZ MOUNTAIN RGNL (A.X.S)

VORTAC HBR 111.8 Chan 55	APP CRS 224°	Rwy Idg TDZE Apt Elev 1433	N/A N/A 1433
--	------------------------	---	---

⚠ When local altimeter setting not received use Hobart altimeter setting.

⚠ MISSED APPROACH: Climbing right turn to 3600 via HBR R-224 to HBR VORTAC and hold.

AWOS-3 118.825	ALTUS APP CON* 125.1 259.3	UNICOM 122.8 (CTAF)
--------------------------	--------------------------------------	-------------------------------



CATEGORY	A	B	C	D
CIRCLING	1940-1	507 (600-1)	1940-1½ 507 (600-1½)	NA
HOBART MUNI ALTIMETER SETTING MINIMUMS				
CIRCLING	2020-1	587 (600-1)	2020-1½ 587 (600-1½)	NA

ALTUS, OKLAHOMA
Amdt 4D 09267

34°42'N - 99°20'W

ALTUS/QUARTZ MOUNTAIN RGNL (A.X.S)

VOR-A

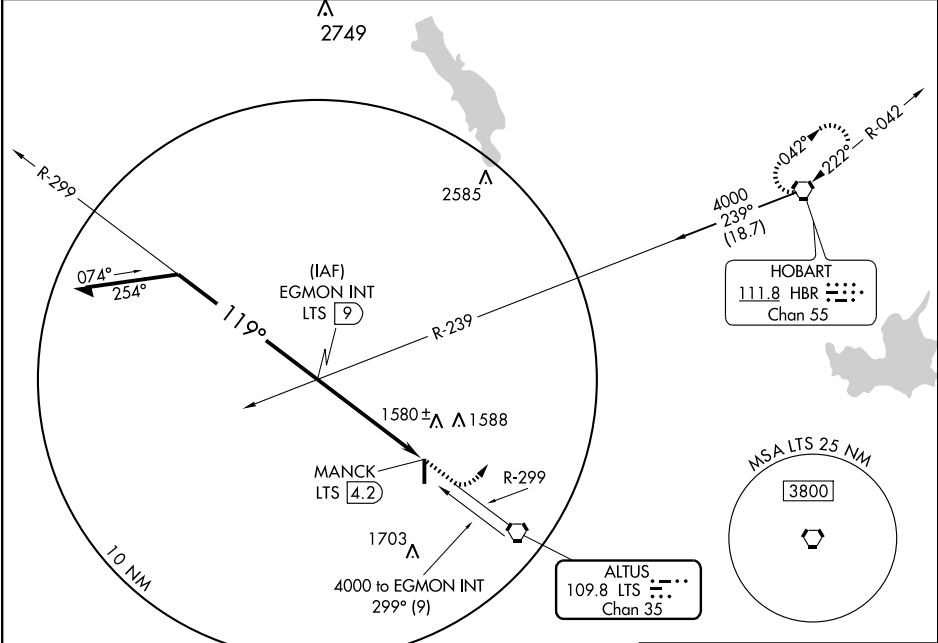
SC-1, 31 MAY 2012 to 28 JUN 2012

SC-1, 31 MAY 2012 to 28 JUN 2012

VORTAC LTS 109.8 Chan 35	APP CRS 119°	Rwy Idg TDZE Apt Elev N/A N/A 1433
--	------------------------	--

▼ When local altimeter setting not received, use Hobart altimeter setting and increase MDA 80 feet.
▲ MISSED APPROACH: Climb to 2500 then climbing left turn to 4000 direct HBR VORTAC and hold.

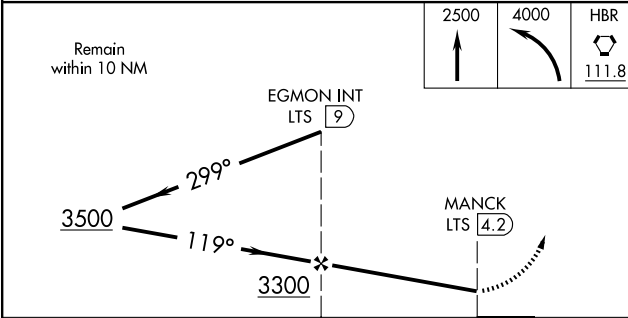
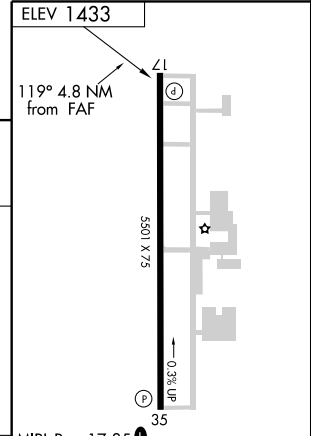
AWOS-3 118.825	ALTUS APP CON* 125.1 259.3	UNICOM 122.8 (CTAF) 0
--------------------------	--------------------------------------	--



SC-1, 31 MAY 2012 to 28 JUN 2012

SC-1, 31 MAY 2012 to 28 JUN 2012

ELEV 1433



CATEGORY	A	B	C	D	FAF to MAP 4.8 NM						
	1940-1	507 (600-1)	1940-1½	507 (600-1½)	NA	Knots	60	90	120	150	180
CIRCLING						Min:Sec	4:48	3:12	2:24	1:55	1:36