

SCRANTON FOUR DEPARTURE

WILKES-BARRE/SCRANTON INTL (AVP)
WILKES-BARRE/SCRANTON, PENNSYLVANIA

ATIS 111.6
GND CON 121.9
WILKES-BARRE TOWER 120.1 257.8
DEP CON (N) 124.5 256.7
(S) 126.3 256.7

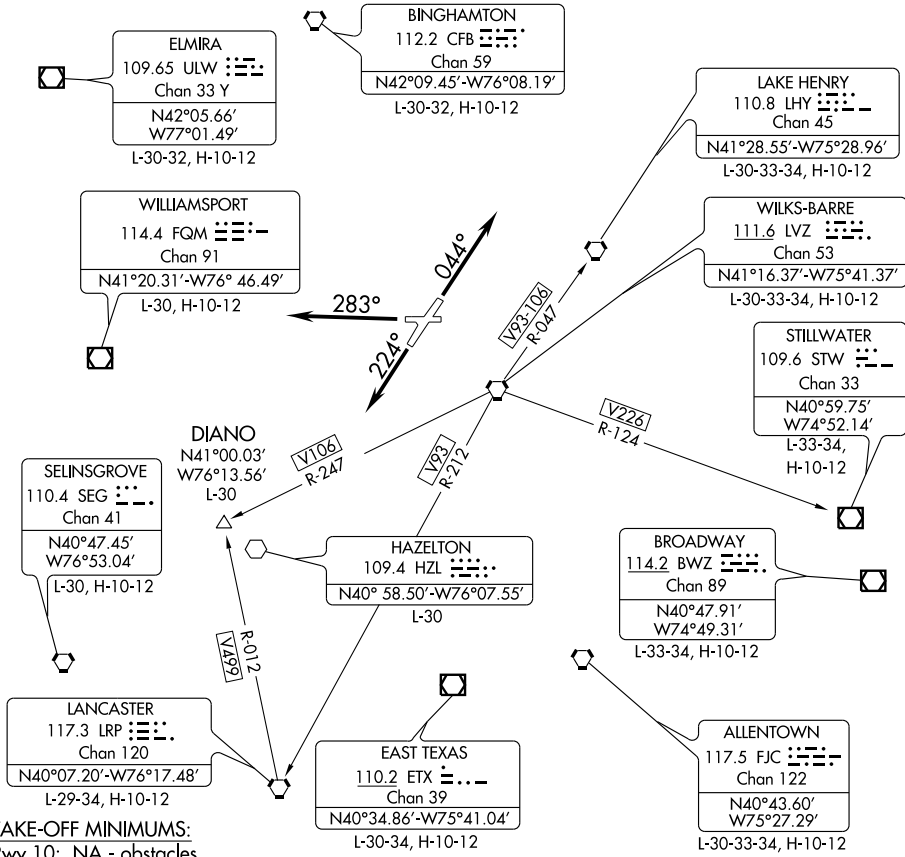
NOTE: Chart not to scale.

TAKE-OFF OBSTACLE:

- Rwy 4: Tree 5852' from DER, 1646' left of centerline, 73' AGL/1064' MSL.
- Tree 1.2 NM from DER, 172' right of centerline, 100' AGL/1119' MSL.
- Rwy 22: Tree 1.4 NM from DER, 2577' left of centerline, 100' AGL/1279' MSL.
- Tower 1.8 NM from DER, 2177' right of centerline, 352' AGL/1293' MSL.

NE-4, 31 MAY 2012 to 28 JUN 2012

NE-4, 31 MAY 2012 to 28 JUN 2012



TAKE-OFF MINIMUMS:

- Rwy 10: NA - obstacles.
- Rwy 4: STANDARD with minimum climb of 221' per NM to 2700', ATC climb of 400' per NM to 2700'.
- Rwy 22: STANDARD with minimum climb of 283' per NM to 3600'.
- Rwy 28: STANDARD with minimum climb of 263' per NM to 2100'.

NOTE: RADAR REQUIRED

DEPARTURE ROUTE DESCRIPTION

- TAKE-OFF RUNWAY 4: Climb via heading 044° to 5000'. Thence. . .
- TAKE-OFF RUNWAY 22: Climb via heading 224° to 5000'. Thence. . .
- TAKE-OFF RUNWAY 28: Climb via heading 283° to 5000'. Thence. . .

. . . . expect radar vectors to assigned route/fix and clearance to filed altitude/flight level ten minutes after departure.