

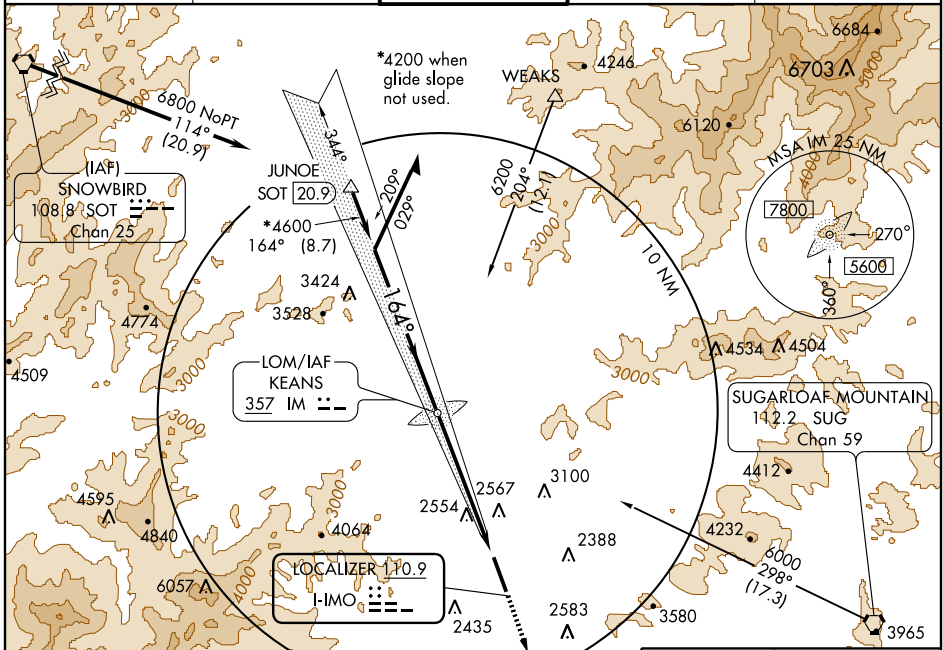
# ILS or LOC RWY 16

ASHEVILLE RGNL (AVL)

LOC I-MO <b>110.9</b>	APP CRS <b>164°</b>	Rwy Idg TDZE Apt Elev	<b>8001</b> <b>2165</b> <b>2165</b>
--------------------------	------------------------	-----------------------------	---

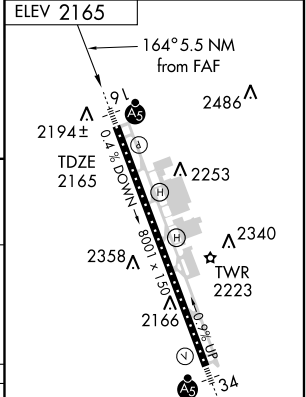
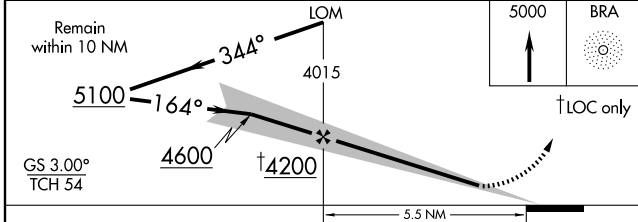
<p>ADF Required. Circling NA west of runway 16-34, night Circling NA.</p>	<p>MALS</p>	<p>MISSED APPROACH: Climb to 5000 direct BRA NDB and hold.</p>
---	-------------	--

ATIS <b>120.2</b>	ASHEVILLE APP CON <b>124.65 269.575</b>	ASHEVILLE TOWER ★ <b>121.1</b> (CTAF) <b>257.8</b>	GND CON <b>121.9</b>	UNICOM <b>122.95</b>
----------------------	--	---	-------------------------	-------------------------



SE-2, 31 MAY 2012 to 28 JUN 2012

SE-2, 31 MAY 2012 to 28 JUN 2012



CATEGORY	A	B	C	D
S-ILS 16	2379/40		214 (300-¾)	
S-LOC 16	2840/50	675 (700-1)	2840-2 675 (700-2)	2840-2¼ 675 (700-2¼)
CIRCLING	2880-1	715 (800-1)	2900-2 735 (800-2)	2900-2¼ 735 (800-2¼)

TDZ/CL Rwy 34	60	90	120	150	180
HRL Rwy 16-34	5:00	3:20	2:30	2:00	1:40
Min:Sec					

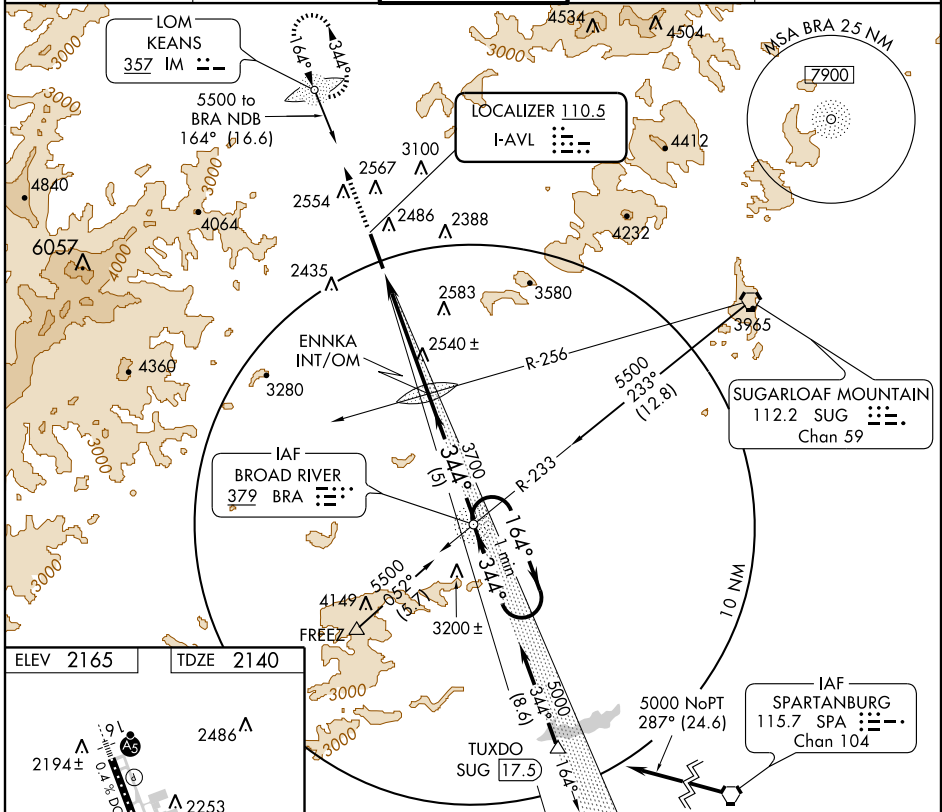
LOC I-AVL <b>110.5</b>	APP CRS <b>344°</b>	Rwy Idg TDZE Apt Elev	<b>8001</b> <b>2140</b> <b>2165</b>
---------------------------	------------------------	-----------------------------	---

# ILS or LOC RWY 34

ASHEVILLE RGNL (AVL)

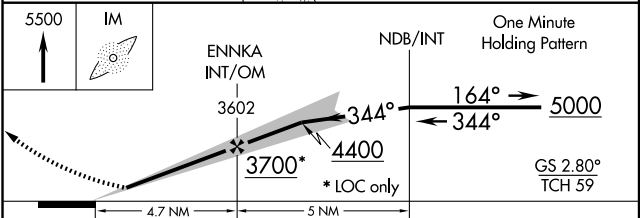
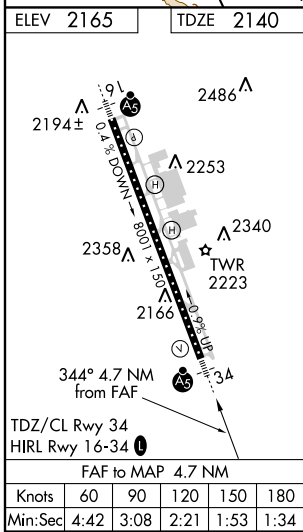
<p><b>⚠</b> Circling NA West of runway 16-34. Circling NA at night. ADF REQUIRED. **RVR 1800 authorized with the use of FD or AP or HUD to DA.</p>	<p><b>MALSR</b></p>	<p><b>MISSED APPROACH:</b> Climb to 5500 direct IM LOM and hold.</p>
--	---------------------	--

<p>ATIS <b>120.2</b></p>	<p>ASHEVILLE APP CON <b>124.65 269.575</b></p>	<p><b>ASHEVILLE TOWER *</b> <b>121.1 (CTAF) 0 257.8</b></p>	<p>GND CON <b>121.9</b></p>	<p>UNICOM <b>122.95</b></p>
------------------------------	--	---	---------------------------------	---------------------------------



SE-2, 31 MAY 2012 to 28 JUN 2012

SE-2, 31 MAY 2012 to 28 JUN 2012



CATEGORY	A	B	C	D
S-ILS 34		** 2340/24	200 (200-1/2)	
S-LOC 34	2800/24	660 (700-1/2)	2800/60 660 (700-1/2)	2800-1 1/2 660 (700-1 1/2)
CIRCLING	2880-1	715 (800-1)	2920-2 1/4 755 (800-2 1/4)	2920-2 1/2 755 (800-2 1/2)



WAAS CH <b>50501</b> <b>W34A</b>	APP CRS <b>344°</b>	Rwy ldg TDZE Apt Elev	<b>8001</b> <b>2140</b> <b>2165</b>
--	------------------------	-----------------------------	---

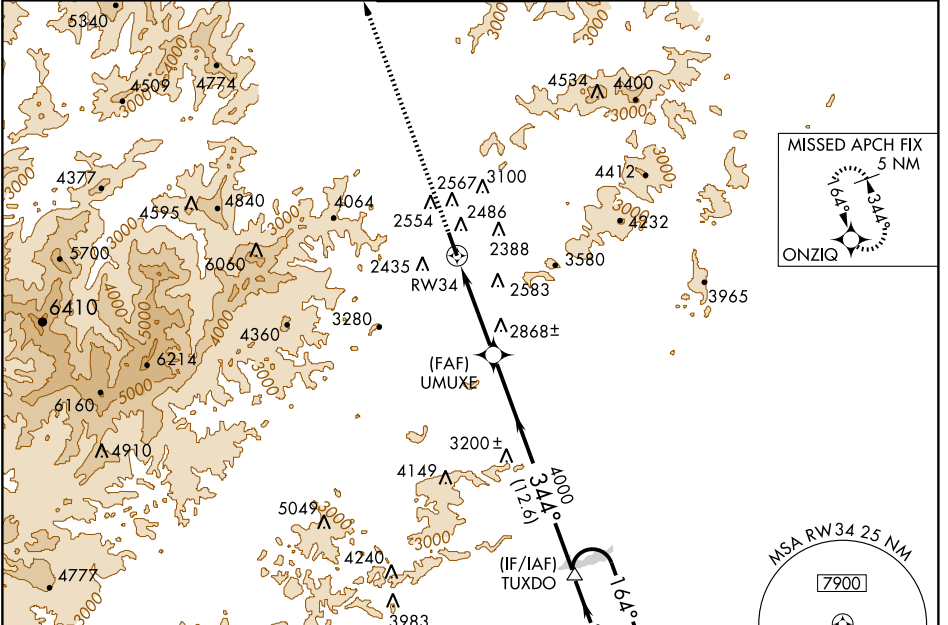
# RNAV (GPS) RWY 34

ASHEVILLE RGNL (AVL)

**▼** Circling NA West of Rwy 16/34. Circling NA at night. If local altimeter setting not received, use Rutherfordton altimeter setting and increase all DA/MDAs 240 feet.  
**▲** VDP NA with Rutherfordton altimeter setting. For inoperative MALSR, increase LPV all Cats visibility to RVR 5000. DME/DME RNP-0.3 NA.  
**ASR**

**MALSR**  
  
**MISSED APPROACH:**  
 Climb to 5000 direct ONZIQ and hold.

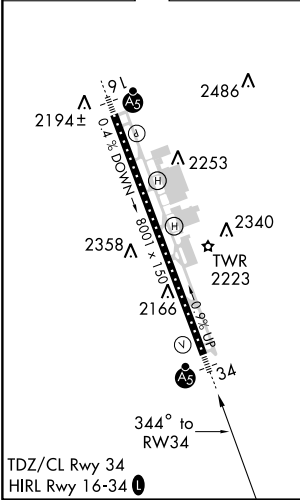
ATIS <b>120.2</b>	ASHEVILLE APP CON <b>124.65 269.575</b>	ASHEVILLE TOWER* <b>121.1 (CTAF) 0 257.8</b>	GND CON <b>121.9</b>	UNICOM <b>122.95</b>
----------------------	--	---	-------------------------	-------------------------



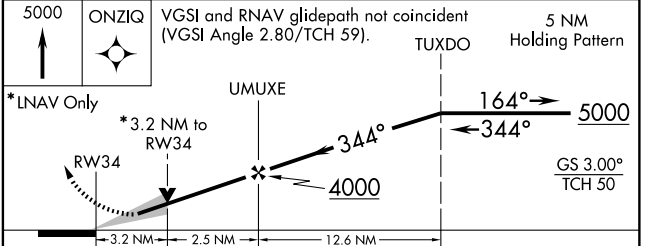
SE-2, 31 MAY 2012 to 28 JUN 2012

SE-2, 31 MAY 2012 to 28 JUN 2012

ELEV 2165	TDZE 2140
-----------	-----------



5000 ONZIQ VGSI and RNAV glidepath not coincident (VGSI Angle 2.80/TCH 59). 5 NM Holding Pattern



CATEGORY	A	B	C	D
LPV DA	2390/24 250 (300-1/2)			
LNAV/VNAV DA	NA			
LNAV MDA	3120/40 980 (1000-3/4)	3120/50 980 (1000-1)	3120-2 1/2	980 (1000-2 1/2)
CIRCLING	3120-1 1/4 955 (1000-1 1/4)	3120-1 1/2 955 (1000-1 1/2)	3120-3 955 (1000-3)	