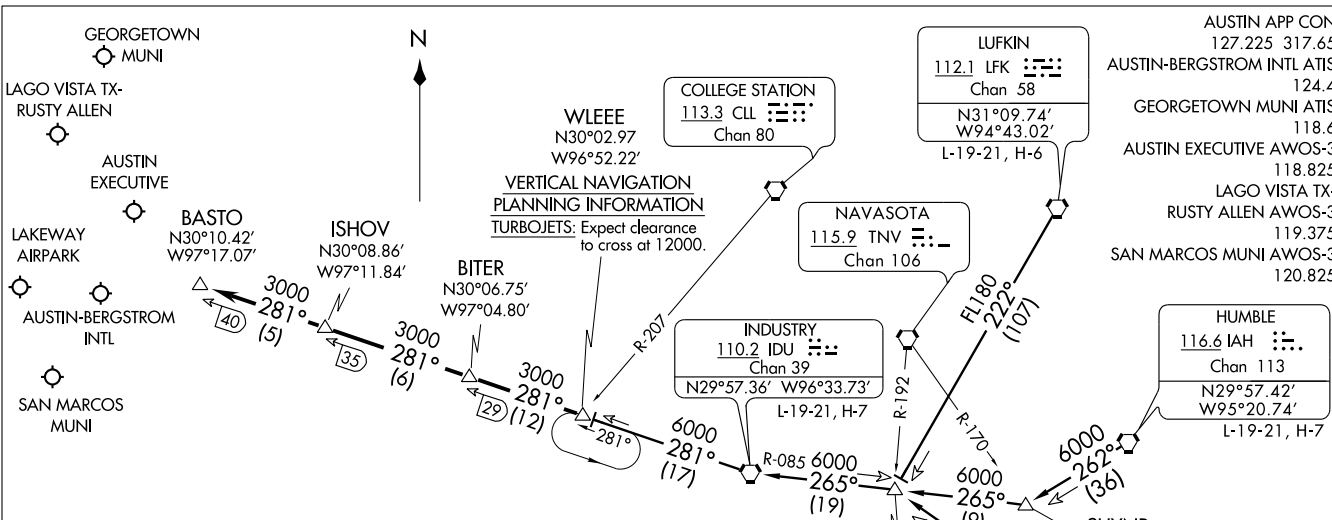


BITER FIVE ARRIVAL  
(BITER.BITER5) 10266



**ARRIVAL ROUTE DESCRIPTION**

HOBBY TRANSITION (HUB.BITER5): From over HUB VOR/DME via HUB R-284 to BOCK INT, then via IDU R-085 to IDU VORTAC, then via IDU R-281 to WLEEE INT. Thence . . . .

HUBLE TRANSITION (IAH.BITER5): From over IAH VORTAC via IAH R-262 to SHYNR INT, then via IDU R-085 to IDU VORTAC, then via IDU R-281 to WLEEE INT. Thence . . . .

LUFKIN TRANSITION (LFK.BITER5): From over LFK VORTAC via LFK R-222 to BOCK INT, then via IDU R-085 to IDU VORTAC, then via IDU R-281 to WLEEE INT. Thence . . . .

. . . . From WLEEE INT via IDU R-281 to BASTO/IDU 40 DME. Expect radar vectors to the final approach course.

NOTE: DME Required.  
NOTE: For conventional navigation equipped aircraft only. DME/DME/IRU or GPS equipped aircraft file via the WLEEE (RNAV) STAR.

NOTE: Chart not to scale.

(BITER.BITER5) 10266

ST-556 (FAA)

AUSTIN, TEXAS

AUSTIN, TEXAS

- AUSTIN APP CON 127.225 317.65
- AUSTIN-BERGSTROM INTL ATIS 124.4
- GEORGETOWN MUNI ATIS 118.6
- AUSTIN EXECUTIVE AWOS-3 118.825
- LAGO VISTA TX-RUSTY ALLEN AWOS-3 119.375
- SAN MARCOS MUNI AWOS-3 120.825

**HUBLE**  
116.6 IAH : : :  
Chan 113  
N29°57.42' W95°20.74'  
L-19-21, H-7

**LUFKIN**  
112.1 LFK : : : :  
Chan 58  
N31°09.74' W94°43.02'  
L-19-21, H-6

**NAVASOTA**  
115.9 TNV : : : -  
Chan 106

**INDUSTRY**  
110.2 IDU : : : :  
Chan 39  
N29°57.36' W96°33.73'  
L-19-21, H-7

**COLLEGE STATION**  
113.3 CLL : : : :  
Chan 80

**VERTICAL NAVIGATION PLANNING INFORMATION**  
**TURBOJET:** Expect clearance to cross at 12000.



GEORGETOWN MUNI

LAGO VISTA TX-RUSTY ALLEN

AUSTIN EXECUTIVE

LAKEWAY AIRPARK

AUSTIN-BERGSTROM INTL

SAN MARCOS MUNI



# KALLA TWO ARRIVAL (KALLA.KALLA2)

AUSTIN, TEXAS

AUSTIN APP CON  
 119.0 370.85  
 AUSTIN-BERGSTROM INTL ATIS  
 124.4

GOOCH SPRINGS  
 112.5 AGJ  
 Chan 72

TEMPLE  
 110.4 TPL  
 Chan 41

LLANO  
 108.2 LLO  
 Chan 19  
 N30°47.78'-W98°47.24'  
 L-19, H-6-7

4100  
 \*4100  
 089°  
 (37)

KALLA  
 N30°43.26'  
 W98°04.64'  
 Expect clearance to cross  
 at 10,000'

GEORGETOWN MUNI

4100  
 120°  
 (35)

R-300

LAKEWAY AIRPARK

CENTEX  
 112.8 CWK  
 Chan 75  
 N30°22.71'-W97°31.79'

AUSTIN-BERGSTROM INTL

SC-3, 31 MAY 2012 to 28 JUN 2012

SC-3, 31 MAY 2012 to 28 JUN 2012

NOTE: Chart not to scale.

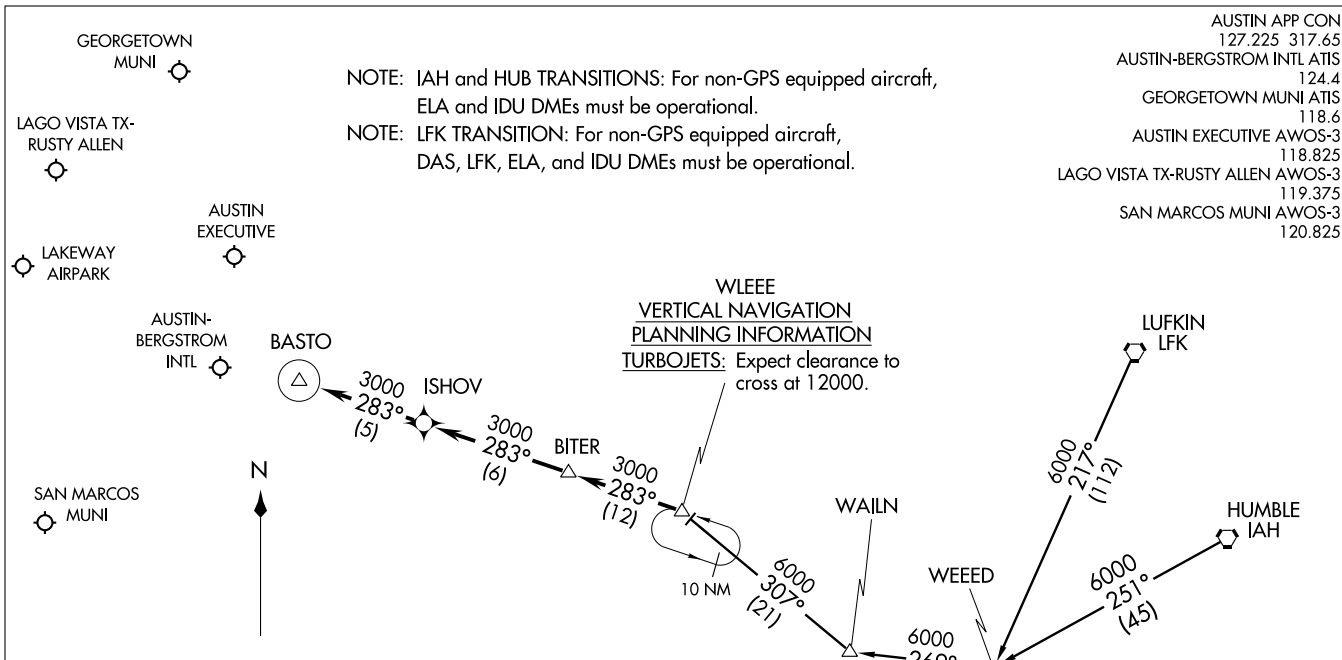
LLANO TRANSITION (LLO.KALLA2): From over LLO VORTAC via LLO R-089 to KALLA INT. Thence . . . . .  
 . . . . . From over KALLA INT via CWK R-300 to CWK VORTAC. Expect radar vectors to final approach.

# KALLA TWO ARRIVAL (KALLA.KALLA2)

AUSTIN, TEXAS

WLEEE ONE ARRIVAL (RNAV)  
(WLEEE.WLEEE1) 10266

(WLEEE.WLEEE1) 10266  
WLEEE ONE ARRIVAL (RNAV)



- AUSTIN APP CON 127.225 317.65
- AUSTIN-BERGSTROM INTL ATIS 124.4
- GEORGETOWN MUNI ATIS 118.6
- AUSTIN EXECUTIVE AWOS-3 118.825
- LAGO VISTA TX-RUSTY ALLEN AWOS-3 119.375
- SAN MARCOS MUNI AWOS-3 120.825

NOTE: IAH and HUB TRANSITIONS: For non-GPS equipped aircraft, ELA and IDU DMEs must be operational.  
NOTE: LFK TRANSITION: For non-GPS equipped aircraft, DAS, LFK, ELA, and IDU DMEs must be operational.

WLEEE  
VERTICAL NAVIGATION  
PLANNING INFORMATION  
TURBOJET: Expect clearance to cross at 12000.

ARRIVAL ROUTE DESCRIPTION

- HOBBY TRANSITION (HUB.WLEEE1)
- HUMBLE TRANSITION (IAH.WLEEE1)
- LUFKIN TRANSITION (LFK.WLEEE1)
- WAILN TRANSITION (WAILN.WLEEE1)

. . . . From WLEEE via 283° track to BITER, thence as depicted to BASTO. Expect vectors to final approach course.

NOTE: RNAV 1.  
NOTE: RADAR Required.  
NOTE: DME/DME/IRU or GPS Required.

NOTE: Chart not to scale.

ST-556 (FAA)

AUSTIN, TEXAS

AUSTIN, TEXAS