

ATIS
124.4
CLNC DEL
125.5 263.0
GND CON
121.9 348.6
AUSTIN TOWER
121.0 281.5
AUSTIN DEP CON
119.0 370.85

SC-3, 31 MAY 2012 to 28 JUN 2012

SC-3, 31 MAY 2012 to 28 JUN 2012

TAKE-OFF MINIMUMS:

Rwys 17L/R, 35L/R: Standard.

TAKE-OFF OBSTACLE NOTES:

- Rwy 17L: Trees beginning 498' from DER, 576' left of centerline, up to 80' AGL/517' MSL.
Tree 617' from DER, 585' right of centerline, 55' AGL/498' MSL.
- Rwy 17R: Trees 1007' from DER, 739' right of centerline, up to 61' AGL/523' MSL.
- Rwy 35R: Tree 817' from DER, 664' right of centerline, 55' AGL/528' MSL.

NOTE: RADAR required.

(NARRATIVE ON FOLLOWING PAGE)

NOTE: Chart not to scale.



DEPARTURE ROUTE DESCRIPTION

TAKE-OFF RUNWAYS 35L/R,17L/R: Fly tower assigned heading for vectors, maintain 4000, expect filed altitude 10 minutes after departure, thence via assigned transition.

ABILENE TRANSITION (AUS3.ABI): From over CWK VORTAC via CWK R-285 and LLO R-103 to LLO VORTAC, then via LLO R-324 and ABI R-141 to ABI VORTAC.

GOOCH SPRINGS TRANSITION (AUS3.AGJ): From over CWK VORTAC via CWK R-321 and AGJ R-142 to AGJ VORTAC.

JUNCTION TRANSITION (AUS3.JCT): From over CWK VORTAC via CWK R-271 and JCT R-088 to JCT VORTAC.

LLANO TRANSITION (AUS3.LLO): From over CWK VORTAC via CWK R-285 and LLO R-103 to LLO VORTAC.

SAN ANGELO TRANSITION (AUS3.SJT): From over CWK VORTAC via CWK R-285 and LLO R-103 to LLO VORTAC, then via LLO R-284 and SJT R-102 to SJT VORTAC.

SAN ANTONIO TRANSITION (AUS3.SAT): From over CWK VORTAC via CWK R-222 and SAT R-040 to SAT VORTAC.

STONEWALL TRANSITION (AUS3.STV): From over CWK VORTAC via CWK R-271 to AMUSE INT, then via STV R-047 to STV VORTAC.

SC-3, 31 MAY 2012 to 28 JUN 2012

SC-3, 31 MAY 2012 to 28 JUN 2012

BEVOH ONE DEPARTURE (RNAV)
(BEVOH1.BEVOH) 11013

AUSTIN, TEXAS
AUSTIN-BERGSTROM INTL (AUS)



DEPARTURE ROUTE DESCRIPTION

Climb on assigned heading for radar vectors to LOUKE, then on depicted route to BEVOH, maintain 4000, thence

. . . . (transition). Expect filed altitude 10 minutes after departure.

EAGLE LAKE TRANSITION: (BEVOH1.ELA)

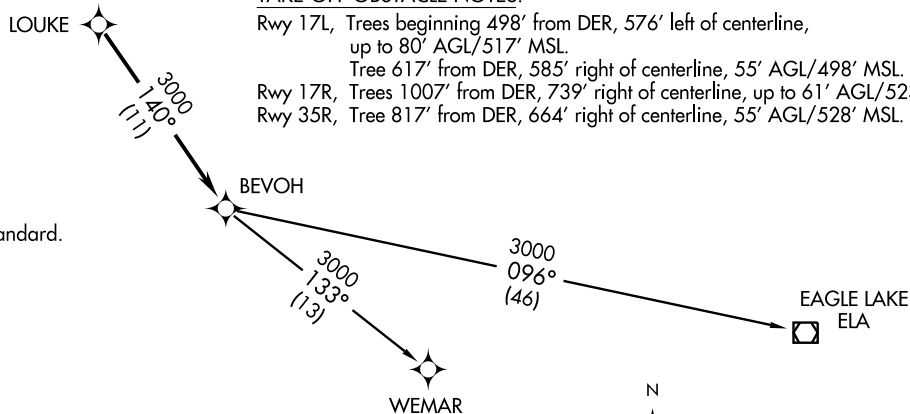
WEMAR TRANSITION: (BEVOH1.WEMAR)

ATIS 124.4
CLNC DEL
125.5 263.0
GND CON
121.9 348.6
AUSTIN TOWER
121.0 281.5
AUSTIN DEP CON
120.87 270.25

TAKE-OFF OBSTACLE NOTES:

Rwy 17L, Trees beginning 498' from DER, 576' left of centerline, up to 80' AGL/517' MSL.
Tree 617' from DER, 585' right of centerline, 55' AGL/498' MSL.
Rwy 17R, Trees 1007' from DER, 739' right of centerline, up to 61' AGL/523' MSL.
Rwy 35R, Tree 817' from DER, 664' right of centerline, 55' AGL/528' MSL.

TAKE-OFF MINIMUMS:
Rwys 17L, 17R, 35L, 35R, Standard.



- NOTE: RNAV 1.
- NOTE: RADAR Required.
- NOTE: DME/DME/IRU or GPS Required.
- NOTE: EAGLE LAKE TRANSITION: For non-GPS equipped aircraft, CWK, IDU and ELA DMEs must be operational.
- NOTE: WEMAR TRANSITION: For non-GPS equipped aircraft, CWK and IDU DMEs must be operational.
- NOTE: Procedure authorized at or below 7000.
- NOTE: ELA TRANSITION: For aircraft landing Houston Terminal Area south of V222 except IWS and TME.

NOTE: Chart not to scale.

(BEVOH1.BEVOH) 11013
BEVOH ONE DEPARTURE (RNAV)

SL-556 (FAA)

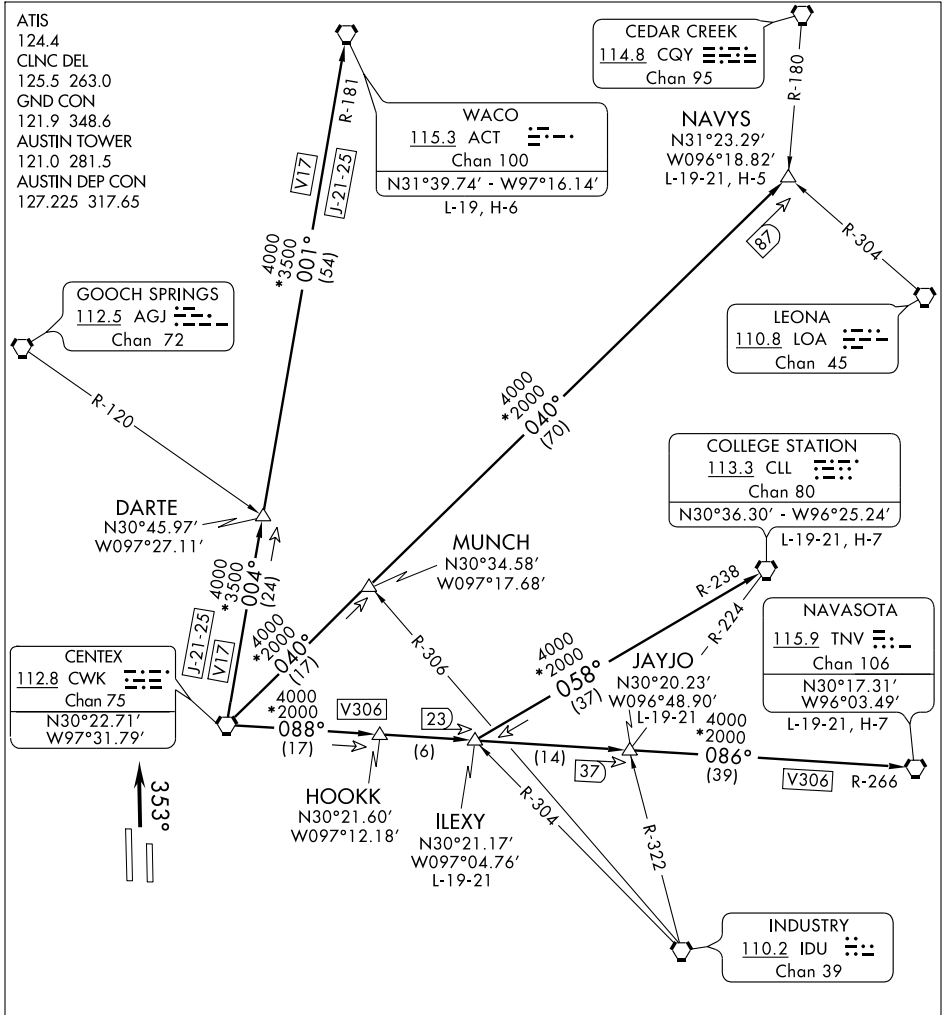
AUSTIN-BERGSTROM INTL (AUS)
AUSTIN, TEXAS

CENTEX FOUR DEPARTURE

SL-556 (FAA)

AUSTIN-BERGSTROM INTL (AUS)

AUSTIN, TEXAS



SC-3, 31 MAY 2012 to 28 JUN 2012

SC-3, 31 MAY 2012 to 28 JUN 2012

NOTE: Radar Required.

TAKE-OFF MINIMUMS:
Rwys 17L/R, 35L/R: Standard.

TAKE-OFF OBSTACLE NOTES:
Rwy 17L: Trees beginning 498' from DER, 576' left of centerline, up to 80' AGL/517' MSL.
Tree 617' from DER, 585' right of centerline, 55' AGL/498' MSL.
Rwy 17R: Trees 1007' from DER, 739' right of centerline, up to 61' AGL/523' MSL.
Rwy 35R: Tree 817' from DER, 664' right of centerline, 55' AGL/528' MSL.

(NARRATIVE ON FOLLOWING PAGE) NOTE: Chart not to scale.

CENTEX FOUR DEPARTURE



DEPARTURE ROUTE DESCRIPTION

TAKE-OFF RWY 35L: Climb via heading 353° to 1800. Thence

TAKEOFF RWY 35R: Climb via heading 353° to 1800. Thence

TAKEOFF RWY 17 L/R: Climb via assigned heading. Thence

. . . . climb to 4000 via radar vectors to assigned transition. Expect filed altitude 10 minutes after departure.

COLLEGE STATION TRANSITION (CWK4.CLL): (For aircraft requesting 13,000' MSL to FL230.) From over CWK VORTAC via CWK R-088 to ILEXY INT, then via CLL R-238 to CLL VORTAC.

ILEXY TRANSITION (CWK4.ILEXY): (For turboprop and turbojet aircraft landing HOU; for turbojet aircraft landing EFD, GLS or LBX; for all aircraft landing IAH.) From over CWK VORTAC via CWK R-088 to ILEXY INT.

JAYJO TRANSITION (CWK4.JAYJO): (For piston aircraft landing HOU; for piston and turboprop aircraft landing EFD, GLS, or LBX; for all aircraft landing other West/South Houston terminal area airports.) From over CWK VORTAC via CWK R-088 to JAYJO INT.

NAVASOTA TRANSITION (CWK4.TNV): From over CWK VORTAC via CWK R-088 and TNV R-266 to TNV VORTAC.

NAVYS TRANSITION (CWK4.NAVYS): (For aircraft landing DFW terminal area requesting FL230 and below.) From over CWK VORTAC via CWK R-040 to NAVYS INT.

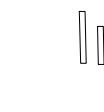
WACO TRANSITION (CWK4.ACT): (For aircraft requesting 12,000' MSL and below.) From over CWK VORTAC via CWK R-004 and ACT R-181 to ACT VORTAC.

SC-3, 31 MAY 2012 to 28 JUN 2012

SC-3, 31 MAY 2012 to 28 JUN 2012

ATIS
124.4
CLNC DEL
125.5 263.0
GND CON
121.9 348.6
AUSTIN TOWER
121.0 281.5
AUSTIN DEP CON
120.87 270.25

STINSON
108.4 SSF



CENTEX
112.8 CWK
Chan 75

(04)
0691

R-084

PALMS
N29°12.81'
W97°24.82'
5000

172°
(78)

R-352

CORPUS CHRISTI
115.5 CRP
Chan 102
N27°54.23' - 097°26.69'
L-20-21, H-7

TAKE-OFF MINIMUMS:

Rwys 17L/17R, standard.

Rwy 35L, standard with an obstacle climb of 227' per NM to 2600.

Rwy 35R, standard with an obstacle climb of 204' per NM to 2600.

NOTE: Rwy 17L, multiple trees beginning 498' from departure end of runway, 576' left of centerline, up to 80' AGL/517' MSL.

Tree 617' from departure end of runway, 584' right of centerline, 55' AGL/498' MSL.

NOTE: Rwy 17R, multiple trees beginning 1007' from departure end of runway, 730' right of centerline to 603' left of centerline up to 61' AGL/540' MSL.

NOTE: Rwy 35R, tree 816' from departure end of runway, 663' right of centerline, 55' AGL/528' MSL.

NOTE: Chart not to scale.



DEPARTURE ROUTE DESCRIPTION

TAKE-OFF RUNWAYS 35L/R, 17L/R: Fly tower assigned heading for vectors to CWK VORTAC, maintain 4000, expect filed altitude 10 minutes after departure, then via CWK R-169 to PALMS INT, cross PALMS INT at or above 5000, then via CRP R-352 to CRP VORTAC.