

LOC/DME I-ASE <b>111.15</b> Chan <b>48 (Y)</b>	APP CRS <b>148°</b>	Rwy Idg TDZE Apt Elev <b>N/A</b> <b>N/A</b> <b>7820</b>
--	------------------------	---

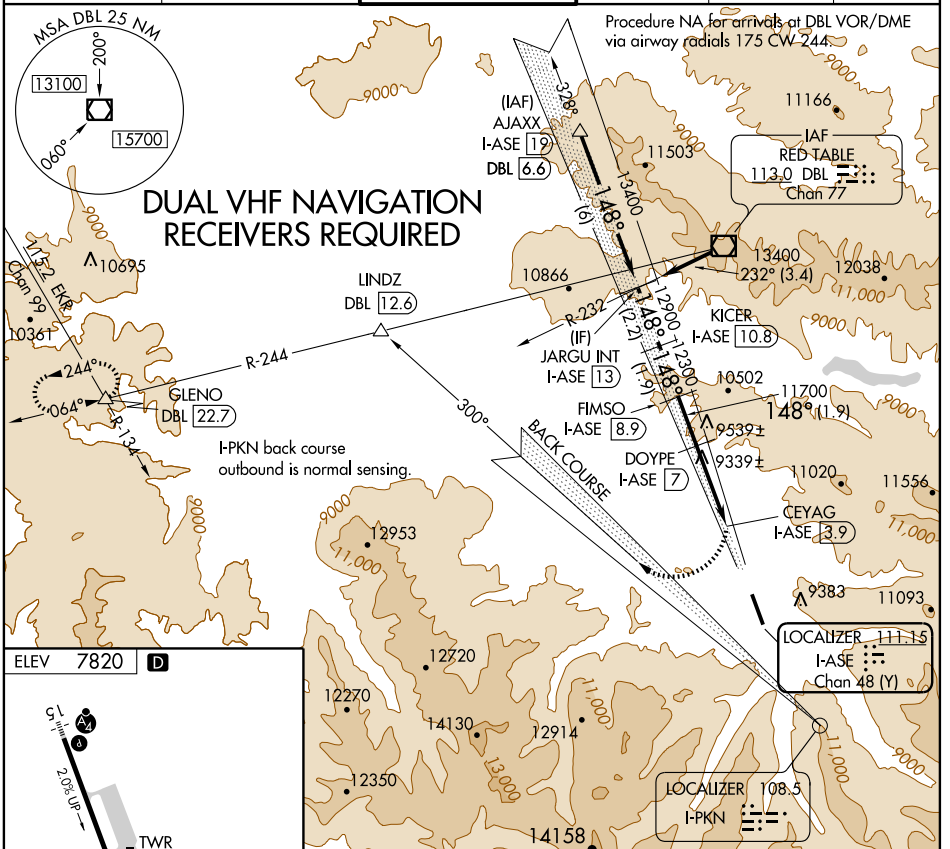
# LOC/DME-E

ASPEN-PITKIN COUNTY/SARDY FIELD (ASE)

**NA** Procedure not authorized at night.

MISSED APPROACH: Climbing right turn to 14000 via heading 300° and I-PKN northwest course (300°) to LINDZ INT/DBL 12.6 DME and DBL VOR/DME R-244 to GLENO INT/DBL 22.7 DME and hold.

ATIS <b>120.4</b>	ASPEN APP CON * <b>123.8 288.3</b>	ASPEN TOWER * <b>118.85 (CTAF) 0 288.3</b>	GND CON <b>121.9</b>	CLNC DEL <b>123.75</b>	UNICOM <b>122.95</b>
----------------------	---------------------------------------	---	-------------------------	---------------------------	-------------------------

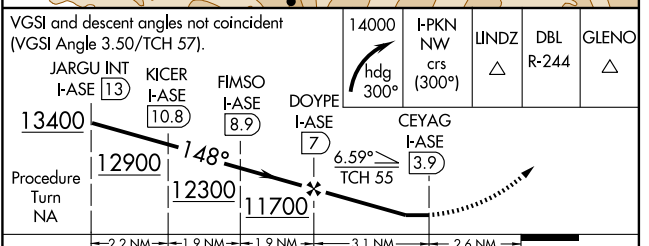
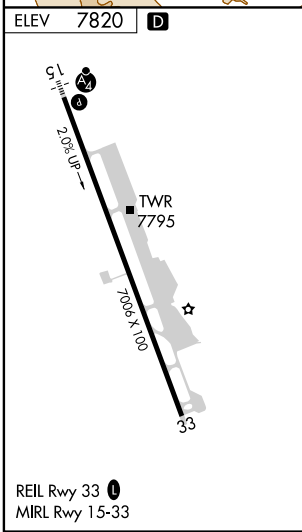


**DUAL VHF NAVIGATION RECEIVERS REQUIRED**

Procedure NA for arrivals at DBL VOR/DME via airway radials 175 CW-244.

SW-1, 31 MAY 2012 to 28 JUN 2012

SW-1, 31 MAY 2012 to 28 JUN 2012

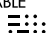


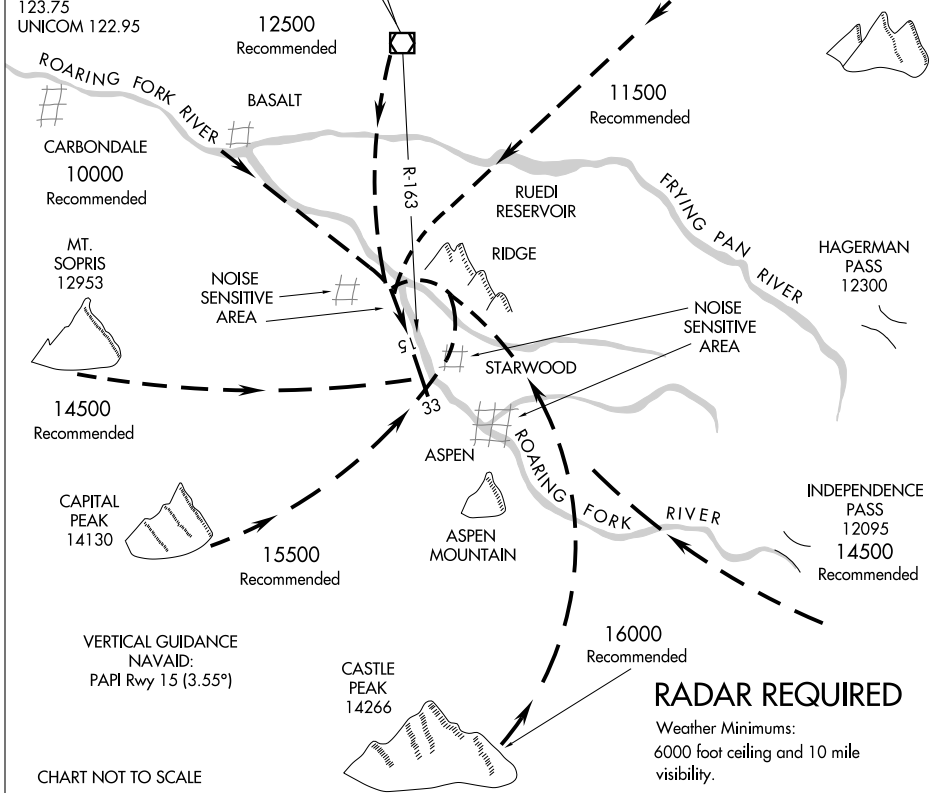
CATEGORY	A	B	C	D
CIRCLING	9840-3 2020 (2100-3)	10020-3 2200 (2200-3)	10140-3 2320 (2400-3)	NA

# ROARING FORK VISUAL RWY 15

ASPEN-PITKIN COUNTY/SARDY FIELD (A5E)  
ASPEN, COLORADO

ATIS 120.4  
 ASPEN APP CON \*  
 123.8 288.3  
 ASPEN TOWER \*  
 118.85 (CTAF) 288.3  
 GND CON  
 121.9  
 CLNC DEL  
 123.75  
 UNICOM 122.95

**RED TABLE**  
 113.0 DBL   
 Chan 77



SW-1, 31 MAY 2012 to 28 JUN 2012

SW-1, 31 MAY 2012 to 28 JUN 2012

CHART NOT TO SCALE

**RADAR REQUIRED**

Weather Minimums:  
6000 foot ceiling and 10 mile visibility.

## ROARING FORK VISUAL RWY 15

Procedure not authorized at night.

When visual approaches to Runway 15 are in progress, clearances will be given utilizing in part the following phraseology:  
 "(IDENT) cleared for a ROARING FORK VISUAL Approach to Runway 15."

# ROARING FORK VISUAL RWY 15

ASPEN, COLORADO  
ASPEN-PITKIN COUNTY/SARDY FIELD (A5E)

VOR/DME DBL <b>113.0</b> Chan <b>77</b>	APP CRS <b>164°</b>	Rwy Idg TDZE Apt Elev <b>7820</b>	N/A N/A <b>7820</b>
---	------------------------	--	---------------------------

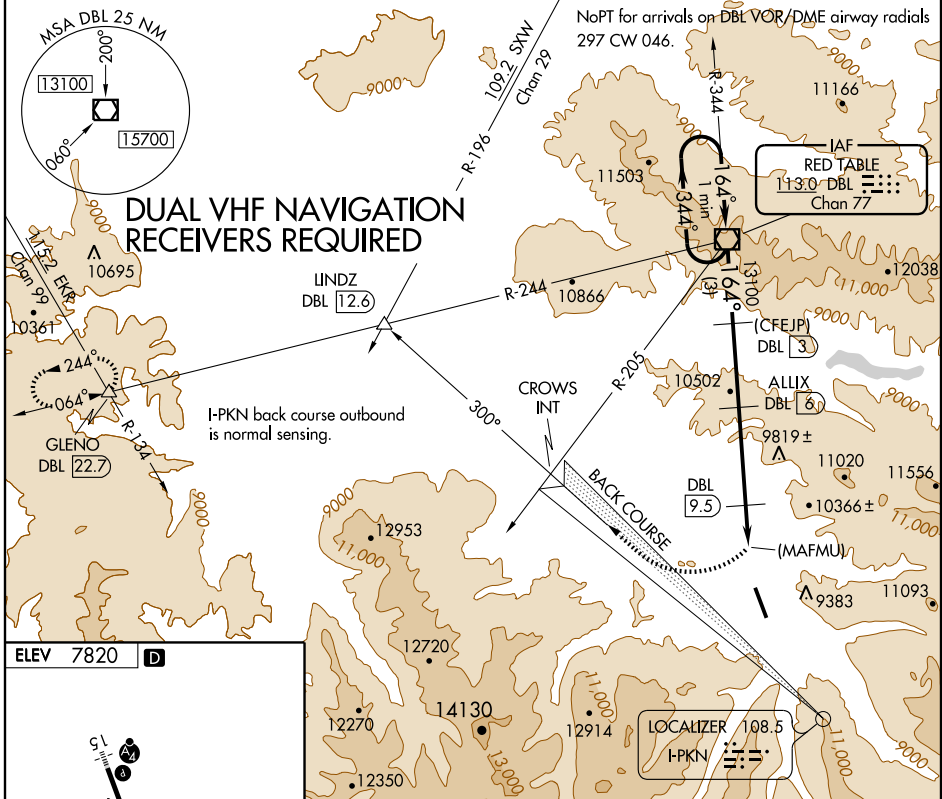
# VOR/DME or GPS-C

ASPEN-PITKIN COUNTY/SARDY FIELD (A5E)

**NA** Obtain local altimeter setting on CTAF. When not received, procedure not authorized. Procedure not authorized at night.

**MISSED APPROACH:** Climbing right turn to 14000 via heading 300° to intercept and proceed via I-PKN northwest course (300°) and DBL VOR/DME R-244 to GLENO Int/DBL 22.7 DME and hold.

ATIS <b>120.4</b>	ASPEN APP CON * <b>123.8 288.3</b>	ASPEN TOWER * <b>118.85 (CTAF) 288.3</b>	GND CON <b>121.9</b>	CLNC DEL <b>123.75</b>	UNICOM <b>122.95</b>
----------------------	---------------------------------------	---	-------------------------	---------------------------	-------------------------



SW-1, 31 MAY 2012 to 28 JUN 2012

SW-1, 31 MAY 2012 to 28 JUN 2012

