

# ASPEN FOUR DEPARTURE

SL-5889 (FAA)

ASPEN-PITKIN COUNTY/SARDY FIELD (ASE)  
ASPEN, COLORADO

ATIS 120.4  
 CLNC DEL 123.75  
 GND CON 121.9  
 ASPEN TOWER\* 118.85 (CTAF) 288.3  
 ASPEN DEP CON\* 123.8 288.3  
 DENVER CENTER 125.35 327.8  
 UNICOM 122.95

**MEEKER**  
 115.2 EKR  
 Chan 99  
 N40°04.05' - W107°55.50'  
 L-9-11, H-3

**MILE HIGH**  
 114.7 DVV  
 Chan 94  
 N39°53.68' - W104°37.46'  
 L-10, H-3-5

**SNOW**  
 109.2 SXW  
 Chan 29  
 N39°37.77' - W106°59.47'  
 L-9

**KREMMLING**  
 113.8 RLG  
 Chan 85  
 N40°00.16' - W106°26.55'  
 L-9-11, H-3-5

**RIFLE**  
 111.45 RGA  
 Chan 51(Y)  
 N39°31.47' - W107°43.95'  
 L-9, H-3

**RED TABLE**  
 113.0 DBL  
 Chan 77  
 N39°26.36' - W106°53.68'  
 L-9, H-3

**FALCON**  
 116.3 FQF  
 Chan 110  
 N39°41.41' - W104°37.26'  
 L-10, H-5

**LINDZ**  
 N39°23.33' - W107°09.48'  
 L-9

**GRAND JUNCTION**  
 112.4 JNC  
 Chan 71  
 N39°03.57' - W108°47.55'  
 L-9, H-3

**BLACK FOREST**  
 112.5 BRK  
 Chan 72  
 N38°56.67' - W104°38.01'  
 L-10, H-3-5

**MONTROSE**  
 117.1 MTJ  
 Chan 118  
 N38°30.39' - W107°53.96'  
 L-9, H-3

**BLUE MESA**  
 114.9 HBU  
 Chan 96  
 N38°27.13' - W107°02.39'  
 L-9, H-3

**LOCALIZER** 108.5  
 I-PKN

**PUEBLO**  
 116.7 PUB  
 Chan 114  
 N38°17.66' - W104°25.77'  
 L-10, H-5

NOTE: This is a RADAR vector departure to L-9, H-3 assigned route/fix. Route depicted is for lost communications procedure only.  
 NOTE: Transponder required.  
 NOTE: Procedure not authorized at night.

### TAKEOFF MINIMUMS

Rwy 15: NA - Terrain.  
 Rwy 33: 400-1 with minimum obstacle climb of 650' per NM to 13000, ATC climb of 840' per NM to 16000.

NOTE: Chart not to scale.

### TAKEOFF OBSTACLE NOTES

Rwy 33: Multiple trees beginning 35' from DER, 386' right of centerline, up to 100' AGL/7722' MSL. Multiple trees, bushes, and terrain beginning 4' from DER, 400' left of centerline, up to 100' AGL/7821' MSL. Multiple trees, bushes, and terrain beginning 3484' from DER, 752' left of centerline, up to 100' AGL/8179' MSL.

### DEPARTURE ROUTE DESCRIPTION

**TAKEOFF RUNWAY 33:** Climbing right turn on heading 345°, maintain 16000 or assigned altitude for RADAR vectors to assigned route/fix. Expect clearance to filed altitude 10 minutes after departure.

**LOST COMMUNICATIONS:** If no transmissions are received for one minute after departure, turn left heading 270° to intercept and proceed via the I-PKN NW course (outbound) to LINDZ INT/DBL R-244/13 DME, thence via assigned fix/route.

# ASPEN FOUR DEPARTURE

SW-1, 31 MAY 2012 to 28 JUN 2012

SW-1, 31 MAY 2012 to 28 JUN 2012

LINDZ SEVEN DEPARTURE  
(LINDZZ.LINDZ) 11293

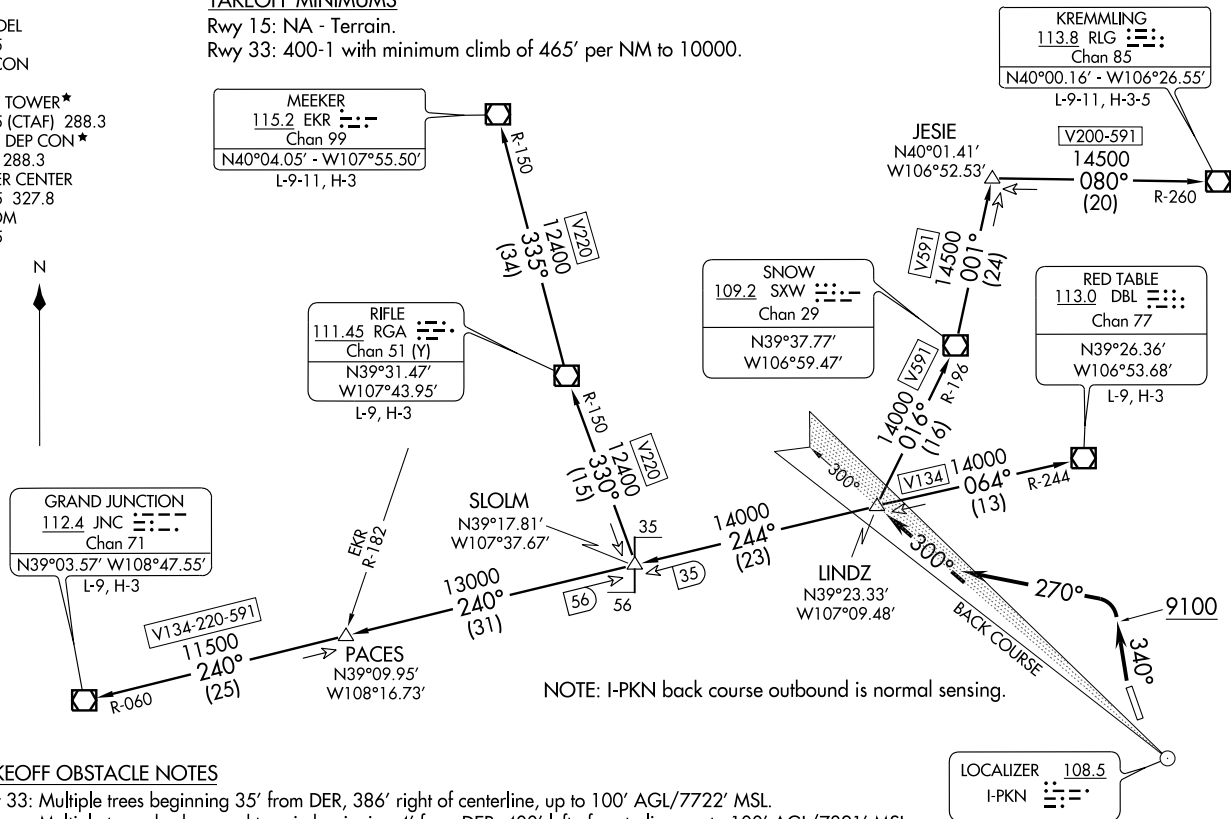
ASPEN-PITKIN COUNTY/SARDY FIELD (ASTE)  
ASPEN, COLORADO

ATIS  
120.4  
CLNC DEL  
123.75  
GND CON  
121.9  
ASPEN TOWER\*  
118.85 (CTAF) 288.3  
ASPEN DEP CON\*  
123.8 288.3  
DENVER CENTER  
125.35 327.8  
UNICOM  
122.95

**TAKEOFF MINIMUMS**

Rwy 15: NA - Terrain.

Rwy 33: 400-1 with minimum climb of 465' per NM to 10000.



NOTE: I-PKN back course outbound is normal sensing.

**TAKEOFF OBSTACLE NOTES**

Rwy 33: Multiple trees beginning 35' from DER, 386' right of centerline, up to 100' AGL/7722' MSL.

Multiple trees, bushes, and terrain beginning 4' from DER, 400' left of centerline, up to 100' AGL/7821' MSL.

Multiple trees, bushes, and terrain beginning 3484' from DER, 752' left of centerline, up to 100' AGL/8179' MSL.

NOTE: Chart not to scale.

(NARRATIVE ON FOLLOWING PAGE)

(LINDZZ.LINDZ) 11293

SL-5889 (FAA)

ASPEN-PITKIN COUNTY/SARDY FIELD (ASTE)  
ASPEN, COLORADO



DEPARTURE ROUTE DESCRIPTION

TAKEOFF RUNWAY 33: Climb heading 340° to 9100, then climbing left turn to 16000 on heading 270° to intercept I-PKN NW course outbound to LINDZ INT/DBL 13 DME. Then via assigned transition, maintain 16000, expect clearance to filed altitude 10 minutes after departure.

LOST COMMUNICATIONS: If no transmissions are received for one minute after departure, turn left on heading 270° to intercept and proceed via the I-PKN NW course (outbound) to LINDZ INT/DBL 13 DME, then via assigned route/transition.

GRAND JUNCTION TRANSITION (LINDZ7.JNC): From over LINDZ INT via DBL R-244 to SLOLM INT, then via JNC R-060 to JNC VOR/DME.

KREMMLING TRANSITION (LINDZ7.RLG): From over LINDZ INT via SXW R-196 to SXW VOR/DME, then via SXW R-001 to JESIE INT, then via RLG R-260 to RLG VOR/DME.

MEEKER TRANSITION (LINDZ7.EKR): From over LINDZ INT via DBL R-244 to SLOLM INT, then via RGA R-150 to RGA VOR/DME, then via RGA R-335 and EKR R-150 to EKR VOR/DME.

RED TABLE TRANSITION (LINDZ7.DBL): From over LINDZ INT via DBL R-244 to DBL VOR/DME.

RIFLE TRANSITION (LINDZ7.RGA): From over LINDZ INT via DBL R-244 to SLOLM INT, then via RGA R-150 to RGA VOR/DME.

SW-1, 31 MAY 2012 to 28 JUN 2012

SW-1, 31 MAY 2012 to 28 JUN 2012

# PITKN TWO DEPARTURE (RNAV)

ATIS 120.4  
 CLNC DEL 123.75  
 GND CON 121.9  
 ASPEN TOWER\* 118.85  
 ASPEN DEP CON\* 123.8 288.3  
 UNICOM 122.95  
 DENVER CENTER 125.35 327.8

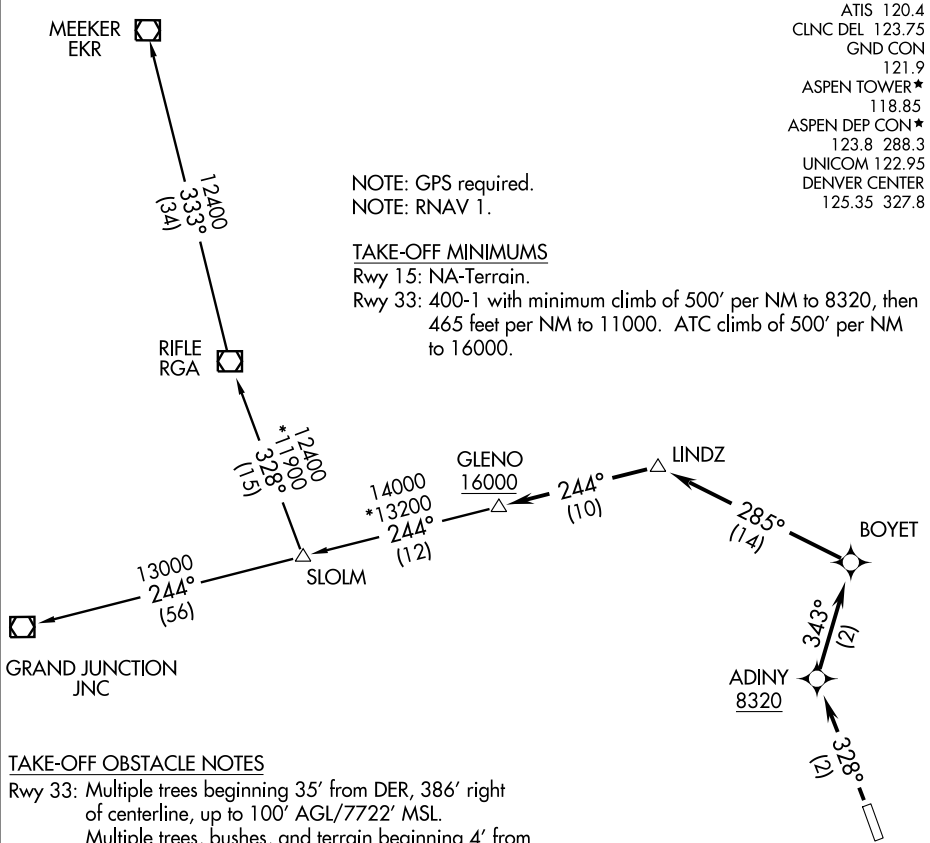
NOTE: GPS required.  
 NOTE: RNAV 1.

### TAKE-OFF MINIMUMS

Rwy 15: NA-Terrain.  
 Rwy 33: 400-1 with minimum climb of 500' per NM to 8320, then 465 feet per NM to 11000. ATC climb of 500' per NM to 16000.

SW-1, 31 MAY 2012 to 28 JUN 2012

SW-1, 31 MAY 2012 to 28 JUN 2012



### TAKE-OFF OBSTACLE NOTES

Rwy 33: Multiple trees beginning 35' from DER, 386' right of centerline, up to 100' AGL/7722' MSL.  
 Multiple trees, bushes, and terrain beginning 4' from DER, 400' left of centerline, up to 100' AGL/7821' MSL.  
 Multiple trees, bushes and terrain beginning 3484' from DER, 752' left of centerline, up to 100' AGL/8179' MSL.

NOTE: Chart not to scale.



### DEPARTURE ROUTE DESCRIPTION

TAKE-OFF RUNWAY 33: Climb heading 328° to at or above 8320 direct ADINY, and climbing right turn to 16000 on 343° track to BOYET, and on 285° track to LINDZ, and on 244° track to GLENO, thence. . . .

. . . .via transition or assigned route, expect clearance to filed altitude 10 minutes after departure.

GRAND JUNCTION TRANSITION (PITKN2.JNC)

MEEKER TRANSITION (PITKN2.EKR)

RIFLE TRANSITION (PITKN2.RGA)