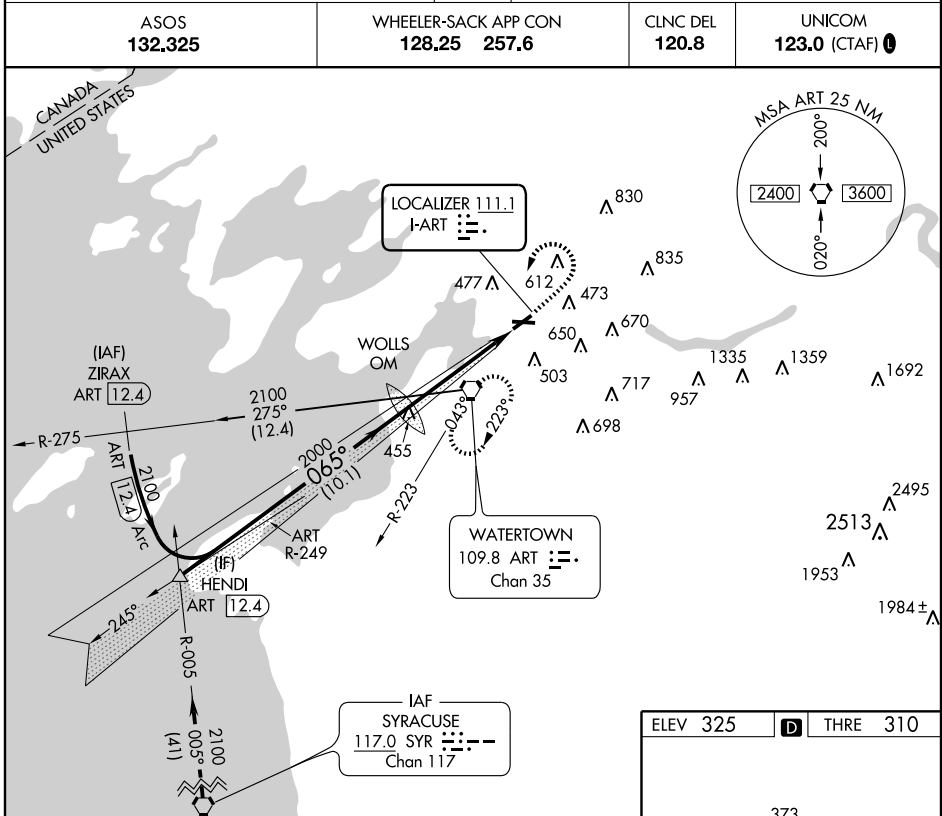


LOC I-ART 111.1	APP CRS 065°	Rwy Idg THRE Apt Elev	4999 310 325
---------------------------	------------------------	-----------------------------	---

ILS or LOC RWY 7

WATERTOWN INTL (ART)

<p>When VGSI inop, Circling Rwy 10 NA at night.</p>	<p>MALSR</p>	<p>MISSED APPROACH: Climb to 900 then climbing left turn to 2400 direct ART VORTAC and hold.</p>	
			<p>ASOS 132.325</p>

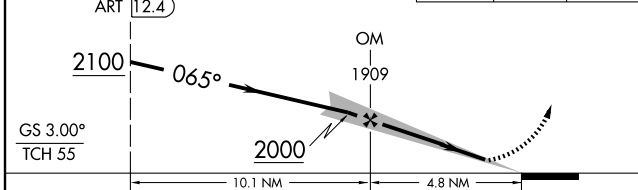


NE-2, 31 MAY 2012 to 28 JUN 2012

NE-2, 31 MAY 2012 to 28 JUN 2012

VGSI and ILS glidepath not coincident (VGSI Angle 3.00/TCH 46).

900	2400	ART
-----	------	-----



ELEV 325		THRE 310
----------	--	----------

REIL Rwy 28					
HIRL Rwy 7-25					
MIRL Rwy 10-28					
FAF to MAP 4.8 NM					
Knots	60	90	120	150	180
Min:Sec	4:48	3:12	2:24	1:55	1:36

CATEGORY	A	B	C	D
S-ILS 7	510-½ 200 (200-½)			
S-LOC 7	760-½	450 (500-½)	760-¾	450 (500-¾)
CIRCLING	960-1	635 (700-1)	980-1¼ 655 (700-1¼)	1000-2¼ 675 (700-2¼)

WAAS CH 53522 W10A	APP CRS 105°	Rwy Idg THRE Apt Elev	5999 309 328
--	------------------------	-----------------------------	---

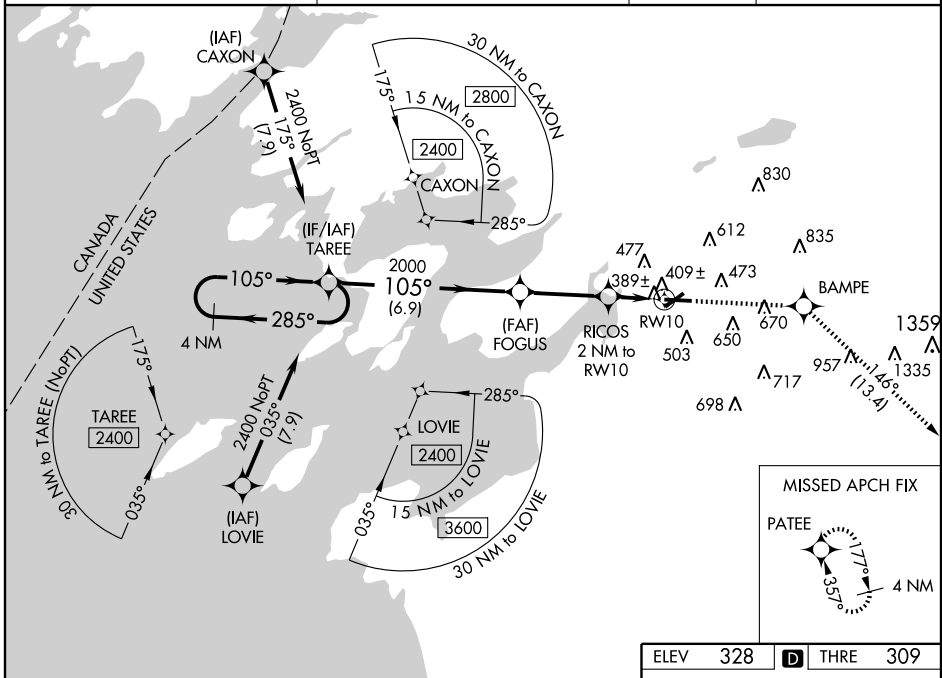
RNAV (GPS) RWY 10

WATERTOWN INTL (ART)

⚠ When VGSI inoperative, Straight-in/Circling Rwy 10 procedure NA at night. DME/DME RNP-0.3 NA. Visibility reduction by helicopters NA. When local altimeter setting not received, use Syracuse altimeter setting and increase all MDA 140 feet, and increase LP and LNAV Cats C/D visibility $\frac{3}{8}$ mile and Circling Cats C/D visibility $\frac{1}{2}$ mile.

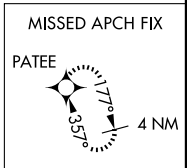
MISSED APPROACH: Climb to 3600 direct BAMPE and on track 146° to PATEE and hold.

ASOS 132.325	WHEELER-SACK APP CON 128.25 257.6	CLNC DEL 120.8	UNICOM 123.0 (CTAF)
------------------------	---	--------------------------	-------------------------------

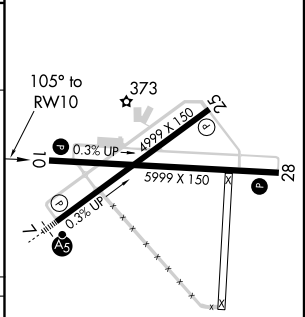
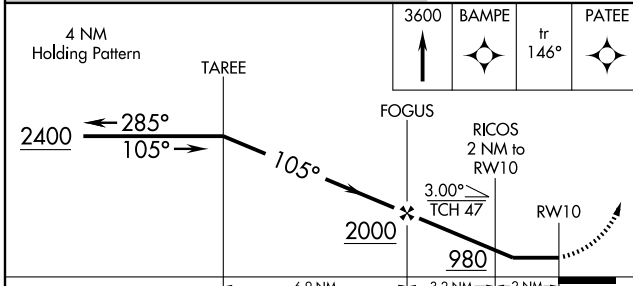


NE-2, 31 MAY 2012 to 28 JUN 2012

NE-2, 31 MAY 2012 to 28 JUN 2012



ELEV	328	THRE	309
------	-----	------	-----



CATEGORY	A	B	C	D
LP MDA		640-1	331 (400-1)	
LNAV MDA		660-1	351 (400-1)	
CIRCLING	900-1	572 (600-1)	920-1½ 592 (600-1½)	960-2 632 (700-2)

- REIL Rwy 28 **Ⓛ**
- HIRL Rwy 7-25 **Ⓛ**
- MIRL Rwy 10-28 **Ⓛ**

WAAS CH 82322 W28A	APP CRS 285°	Rwy Idg THRE Apt Elev	5999 328 328
--	------------------------	-----------------------------	---

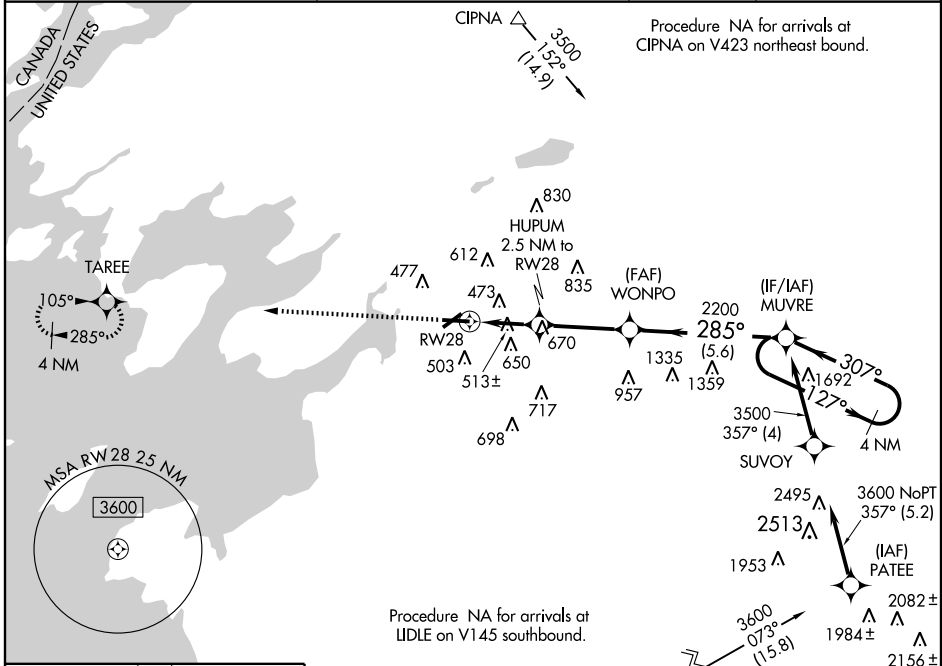
RNAV (GPS) RWY 28

WATERTOWN INTL (ART)

⚠ When VGSI inoperative, circling Rwy 10 NA at night. DME/DME RNP-0.3 NA. Visibility reduction by helicopters NA. When local altimeter setting not received, use Syracuse altimeter setting and increase all MDA 140 feet, increase LNAV Cats C/D visibility and Cat C Circling visibility ¼ mile, and Cat D Circling visibility ½ mile; increase LP Cats C/D visibility ⅓ mile. VDP NA with Syracuse altimeter setting.

⚠ MISSED APPROACH: Climb to 2400 direct TAREE and hold.

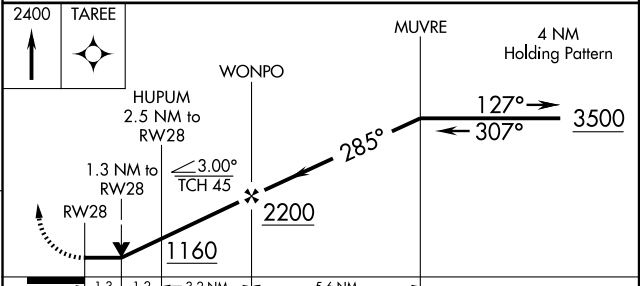
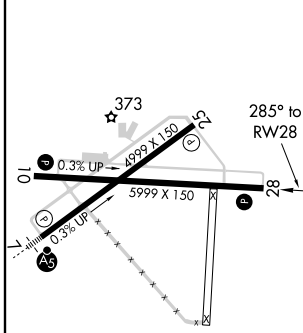
ASOS 132.325	WHEELER-SACK APP CON 128.25 257.6	CLNC DEL 120.8	UNICOM 123.0 (CTAF)
------------------------	---	--------------------------	-------------------------------



NE-2, 31 MAY 2012 to 28 JUN 2012

NE-2, 31 MAY 2012 to 28 JUN 2012

ELEV 328	D	THRE 328
----------	----------	----------



CATEGORY	A	B	C	D
LP MDA	780-1	452 (500-1)	780-1⅓	452 (500-1⅓)
LNAV MDA	920-1	592 (600-1)	920-1¾	592 (600-1¾)
CIRCLING	920-1	592 (600-1)	920-1¾ 592 (600-1¾)	960-2 632 (700-2)

- REIL Rwy 28 **Ⓛ**
- HIRL Rwy 7-25 **Ⓛ**
- MIRL Rwy 10-28 **Ⓛ**

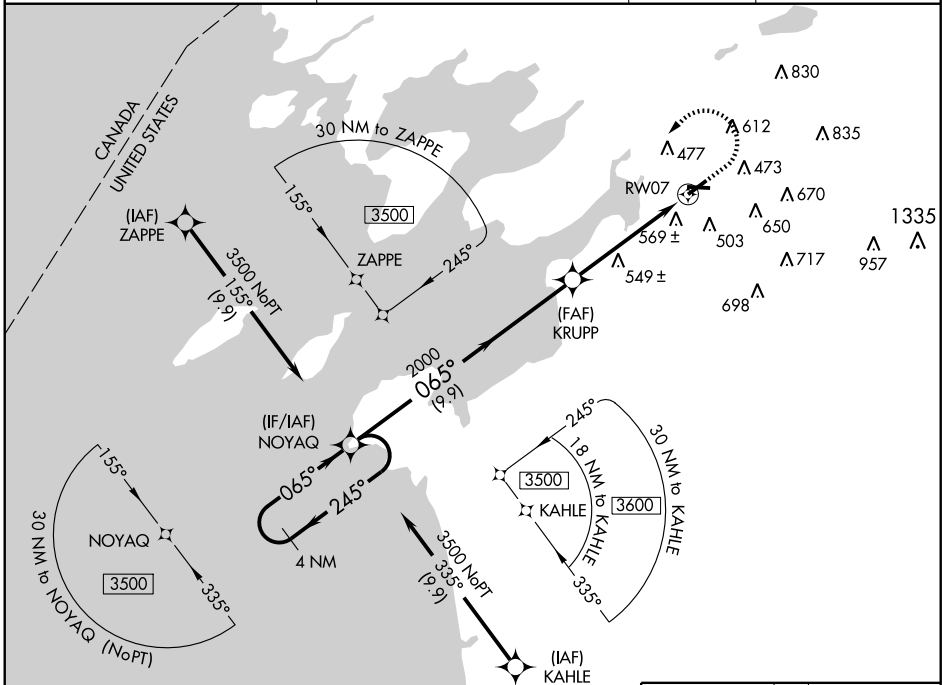
WAAS CH 82510 W07A	APP CRS 065°	Rwy Idg THRE 310 Apt Elev 325	4999
--	------------------------	---	-------------

RNAV (GPS) RWY 7

WATERTOWN INTL (ART)

<p>▼ When VGSI inop, Circling Rwy 10 NA at night. For uncompensated Baro-VNAV systems, LNAV/VNAV NA below -15°C (5°F) or above 41°C (105°F). DME/DME RNP-0.3 NA.</p> <p>▲</p>	<p>MALSR</p>	<p>MISSED APPROACH: Climb to 900 then climbing left turn to 3500 direct NOYAQ and hold.</p>
---	--------------	---

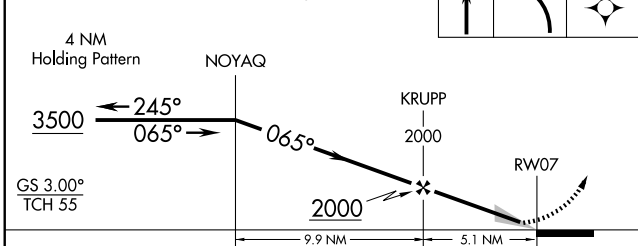
ASOS 132.325	WHEELER-SACK APP CON 128.25 257.6	CLNC DEL 120.8	UNICOM 123.0 (CTAF)
------------------------	---	--------------------------	-------------------------------



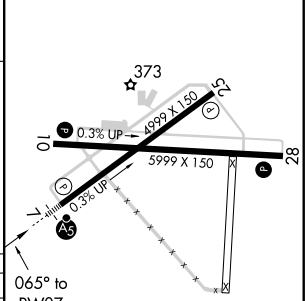
NE-2, 31 MAY 2012 to 28 JUN 2012

NE-2, 31 MAY 2012 to 28 JUN 2012

VGSI and RNAV glidepath not coincident (VGSI Angle 3.00/TCH 46).



ELEV	325	D	THRE	310
------	-----	----------	------	-----



CATEGORY	A	B	C	D
LPV DA		510-1/2	200 (200-1/2)	
LNAV/VNAV DA		881-1/2	571 (600-1/2)	
LNAV MDA	800-1/2	490 (500-1/2)	800-1	490 (500-1)
CIRCLING	960-1	635 (700-1)	980-1 3/4 655 (700-1 3/4)	1000-2 1/4 675 (700-2 1/4)

REIL Rwy 28 **Ⓛ**
 HIRL Rwy 7-25 **Ⓛ**
 MRL Rwy 10-28 **Ⓛ**

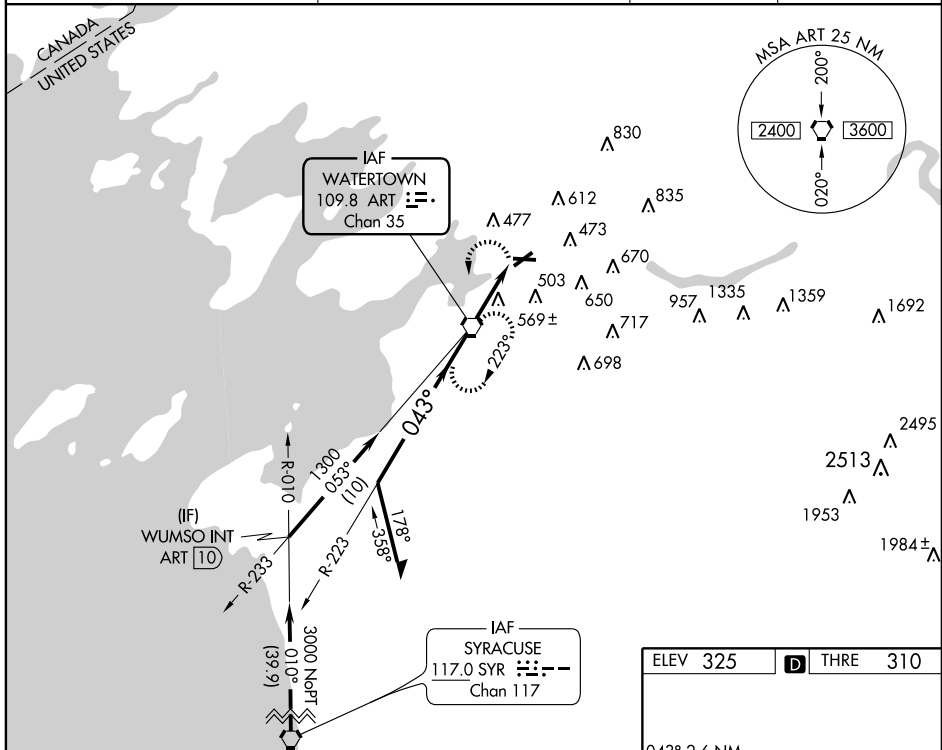
VORTAC ART 109.8 Chan 35	APP CRS 043°	Rwy Idg THRE Apt Elev 4999 310 325
--	------------------------	--

VOR RWY 7

WATERTOWN INTL (ART)

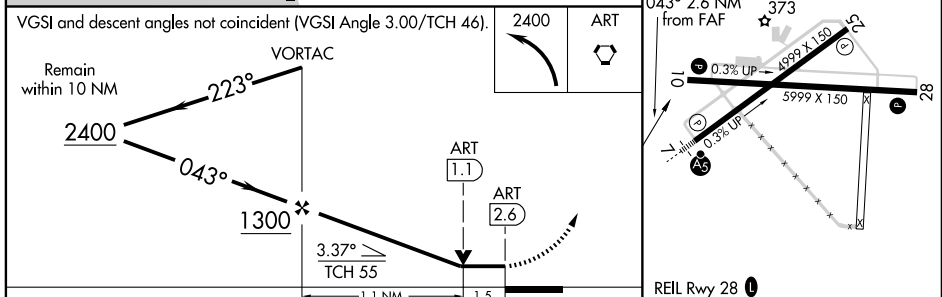
Inoperative table does not apply. When VGSI inop, Circling Rwy 10 NA at night. Visibility reduction by helicopters NA.	MALS	MISSED APPROACH: Climbing left turn to 2400 direct ART VORTAC and hold, continue climb-in-hold to 2400.
--	------	---

ASOS 132.325	WHEELER-SACK APP CON 128.25 257.6	CLNC DEL 120.8	UNICOM 123.0 (CTAF)
------------------------	---	--------------------------	-------------------------------



NE-2, 31 MAY 2012 to 28 JUN 2012

NE-2, 31 MAY 2012 to 28 JUN 2012



CATEGORY	A	B	C	D
S-7	840-1	530 (600-1)	840-1½	530 (600-1½)
CIRCLING	960-1	635 (700-1)	980-1¾ 655 (700-1¾)	1000-2¼ 675 (700-2¼)

ELEV 325	D	THRE 310			
REIL Rwy 28	HIRL Rwy 7-25	MIRL Rwy 10-28			
FAF to MAP 2.6 NM					
Knots	60	90	120	150	180
Min:Sec	2:36	1:44	1:18	1:02	0:52