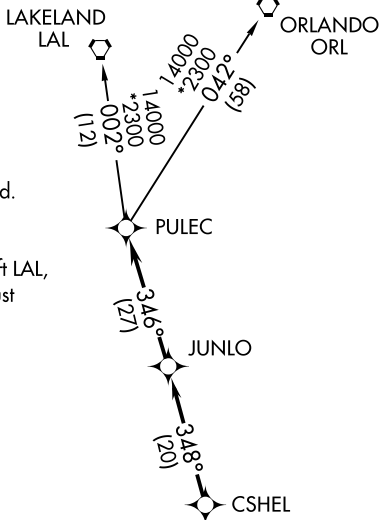


CSHEL FIVE DEPARTURE (RNAV)

**TOP ALTITUDE:
2000**



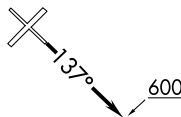
ATIS 134.225
 CLNC DEL 118.0
 GND CON 121.6
 NAPLES TOWER ★ 128.5 (CTAF)
 FORT MYERS DEP CON ★ 119.75 327.8

- NOTE: RADAR required.
- NOTE: DME/DME/IRU or GPS Required.
- NOTE: RNAV 1.
- NOTE: For Turbojet aircraft only.
- NOTE: For NON-GPS equipped aircraft LAL, LBV, RSW, and SRQ DME's must be operational.

TAKEOFF OBSTACLES:

- Rwy 5: Trees beginning 92' from DER, left and right of centerline, up to 82' AGL/92' MSL. Tanks 1308' from DER, 293' left of centerline, up to 34' AGL/44' MSL.
- Rwy 14: Trees beginning 97' from DER, left and right of centerline, up to 101' AGL/108' MSL.
- Rwy 23: Trees beginning 126' from DER, left and right of centerline, up to 66' AGL/70' MSL.
- Rwy 32: Trees beginning 339' from DER, left and right of centerline, up to 119' AGL/123' MSL.

TAKEOFF MINIMUMS
 Rwy 5, 14, 23, 32: Standard.



NOTE: Chart not to scale.

DEPARTURE ROUTE DESCRIPTION

TAKEOFF RUNWAY 5, 23, 32: Climb on assigned heading for radar vectors to CSHEL, then via depicted route to PULEC, thence....

TAKEOFF RUNWAY 14: Climb heading 137° to 600, then via radar vectors to CSHEL, then via depicted route to PULEC, thence....

....via (transition). Maintain 2000 or as assigned by ATC, expect filed altitude/flight level 10 minutes after departure.

LAKELAND TRANSITION (CSHEL5.LAL):

ORLANDO TRANSITION (CSHEL5.ORL):

NAPLES FIVE DEPARTURE

**TOP ALTITUDE:
2000**

ST. PETERSBURG
116.4 PIE
Chan 111
N27°54.47' - W82°41.06'
L-21-24, H-8

LAKELAND
116.0 LAL
Chan 107
N27°59.17'
W82°00.83'
L-21-23-24, H-8

ORLANDO
112.2 ORL
Chan 59
N28°32.56'
W81°20.10'
L-21-23-24, H-8

ATIS 134.225
CLNC DEL
118.0
GND CON
121.6
NAPLES TOWER*
128.5 (CTAF)
FORT MYERS DEP CON*
119.75 327.8

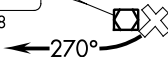
SARASOTA
117.0 SRQ
Chan 117
N27°24.42'
W82°33.82'
L-21-23, H-8

LEE COUNTY
111.8 RSW
Chan 55
N26°31.79'
W81°46.55'
L-21-23, H-8

LA BELLE
110.4 LBV
Chan 41
N26°49.69'
W81°23.49'
L-21-23, H-8

CYPRESS
108.6 CYY
Chan 23
N26°09.21'
W81°46.69'
L-21-23, H-8

PAHOKEE
115.4 PHK
Chan 101
N26°46.96'
W80°41.49'
L-23, H-8



FT. LAUDERDALE
114.4 FLL
Chan 91
N26°04.44'
W80°09.99'
L-23, H-8

NOTE: RADAR required.

TAKEOFF MINIMUMS
Rwys 5, 14, 32: NA-ATC.
Rwy 23: 300-1.

KEY WEST
113.5 EYW
Chan 82
N24°35.15'
W81°48.03'
L-21-23, H-8

TAKEOFF OBSTACLE NOTES

Rwy 23: Trees 400' left and right of DER, up to 100' AGL/110' MSL.

NOISE ABATEMENT NOTE:

Jet aircraft departure procedures and headings are predicated on avoiding noise sensitive areas. Flight crew awareness and compliance is important in minimizing noise impacts on surrounding communities.

NOTE: Chart not to scale.



DEPARTURE ROUTE DESCRIPTION

TAKEOFF RUNWAY 23: Turn right heading 270°. Climb and maintain 2000. Expect RADAR vectors to join assigned route. Expect clearance to filed altitude 10 minutes after departure.