

LOC/DME I-APC 111.3 Chan 50	APP CRS 006°	Rwy Idg THRE Apt Elev 35	5930
------------------------------------------	------------------------	------------------------------------------	-------------

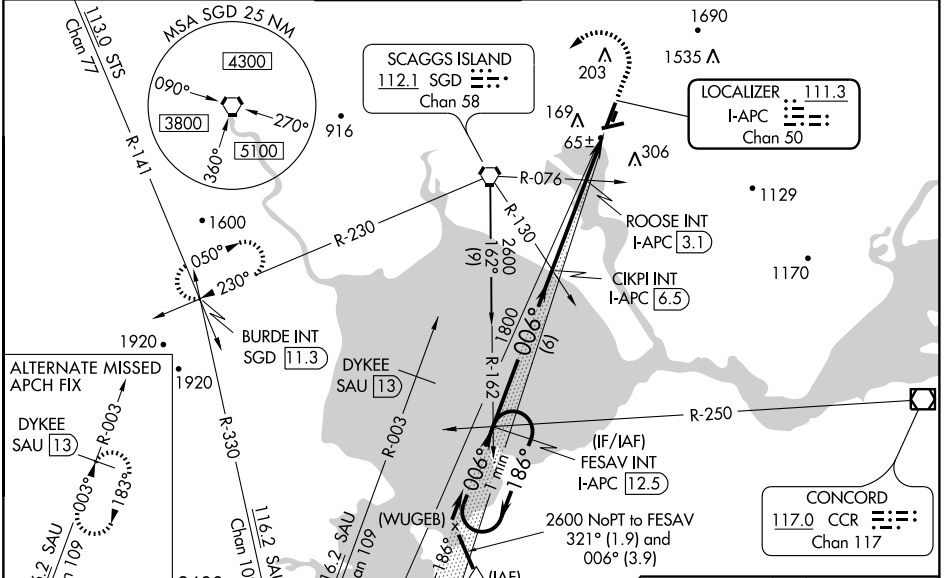
ILS or LOC RWY 36L

NAPA COUNTY (APC)

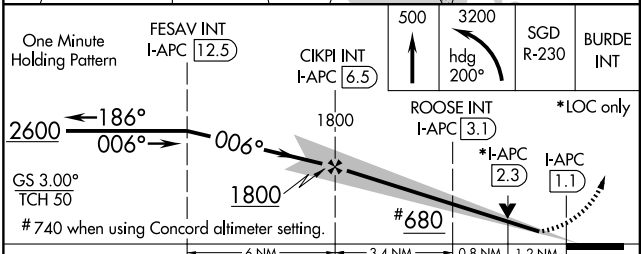
⚠ When local altimeter setting not received, use Concord altimeter setting and increase all DA 41 feet; increase all MDA 60 feet and visibility Circling Cat B ¼ mile and; increase ROOSE fix minimums S-L 36L visibility Cats C and D ¼ mile, Circling Cat B ¼ mile. VDP NA when using Concord altimeter setting. For inoperative MALS, increase S-LOC Cats C and D visibility ½ mile; increase ROOSE fix S-LOC Cats C and D visibility ¾ mile. When using Concord altimeter setting; for inoperative MALS, increase ROOSE fix S-LOC Cats C and D visibility ½ mile.

MALS
MISSED APPROACH: Climb to 500 then climbing left turn to 3200 on heading 200° and on SGD VORTAC R-230 to BURDE/SGD 11.3 DME and hold.

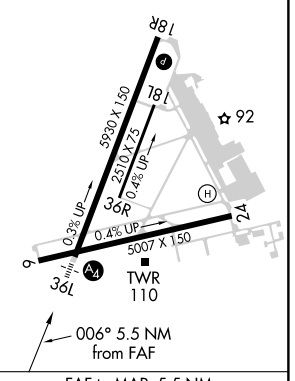
ATIS 124.05	OAKLAND CENTER 127.8 353.5	NAPA TOWER ★ 118.7 (CTAF) 257.8	GND CON 121.7	CLNC DEL 127.85	UNICOM 122.95
-----------------------	--------------------------------------	-------------------------------------------	-------------------------	---------------------------	-------------------------



ELEV 35	THRE 14
---------	---------



MIRL Rwy 6-24 and 18R-36L
REIL Rwy 6



CATEGORY	A	B	C	D
S-ILS 36L	214-¾		200 (200-¾)	
S-LOC 36L	680-¾	666 (700-¾)	680-1¾	666 (700-1¾)
CIRCLING	700-1	820-1	920-2¾	1180-3
	665 (700-1)	785 (800-1)	885 (900-2¾)	1145 (1200-3)
ROOSE FIX MINIMUMS (DUAL VOR RECEIVERS OR DME REQUIRED)				
S-LOC 36L	460-¾	446 (500-¾)	460-1	446 (500-1)
CIRCLING	700-1	820-1	920-2¾	1180-3
	665 (700-1)	785 (800-1)	885 (900-2¾)	1145 (1200-3)

FAF to MAP 5.5 NM					
Knots	60	90	120	150	180
Min:Sec	5:30	3:40	2:45	2:12	1:50

SW-2, 31 MAY 2012 to 28 JUN 2012

SW-2, 31 MAY 2012 to 28 JUN 2012

RNAV (GPS) RWY 6

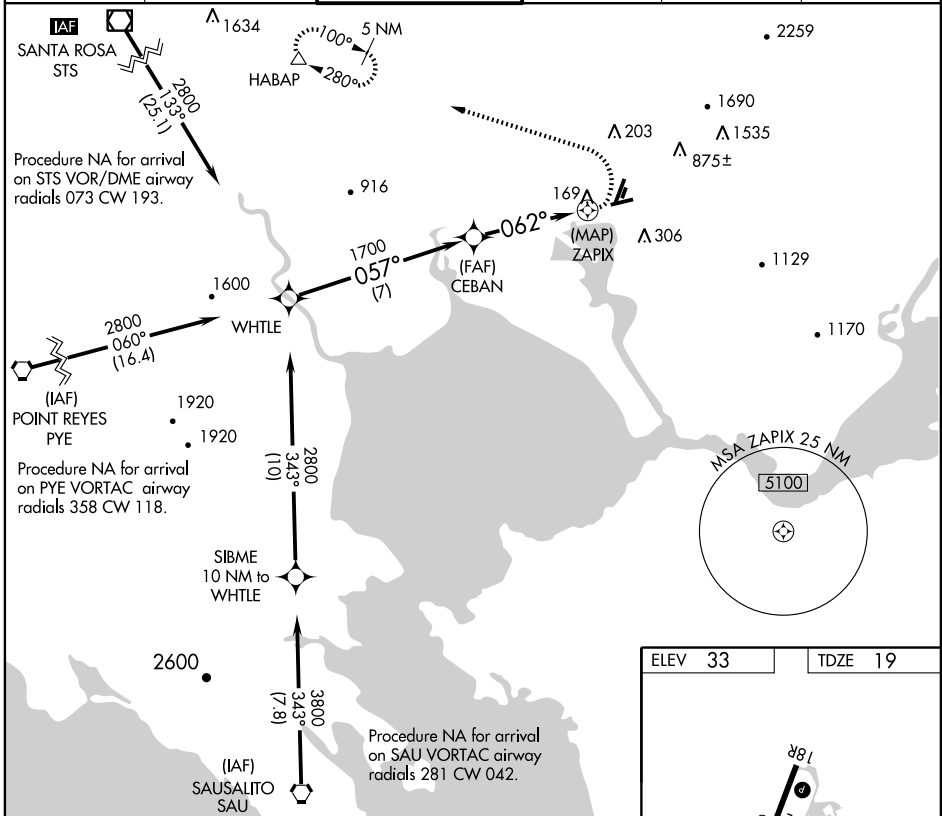
NAPA COUNTY (APC)

APP CRS	Rwy Idg	5007
062°	TDZE	19
	Apt Elev	33

NA Circling NA northeast of Rwys 18R and 24.
IAF ARM APPROACH MODE PRIOR TO IAF.
 GPS or RNP-0.3 required. DME/DME RNP-0.3 NA.

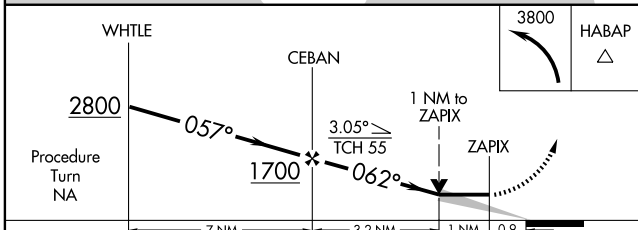
MISSED APPROACH: Climbing left turn to 3800 direct HABAP and hold.

ATIS	OAKLAND CENTER	NAPA TOWER ★	GND CON	CLNC DEL	UNICOM
124.05	127.8 353.5	118.7 (CTAF) 257.8	121.7	127.85	122.95



SW-2, 31 MAY 2012 to 28 JUN 2012

SW-2, 31 MAY 2012 to 28 JUN 2012



ELEV 33	TDZE 19
---------	---------

REIL Rwy 6
 MIRL Rws 6-24 and 18R-36L

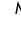
CATEGORY	A	B	C	D
RNAV MDA	660-1 641 (700-1)		660-1½ 641 (700-1½)	660-2 641 (700-2)
CIRCLING	660-1 627 (700-1)		720-2 687 (700-2)	1240-3 1207 (1300-3)

WAAS CH 56613 W36A	APP CRS 006°	Rwy Idg THRE 14 Apt Elev 35
----------------------------------------	------------------------	----------------------------------------------------

RNAV (GPS) Y RWY 36L

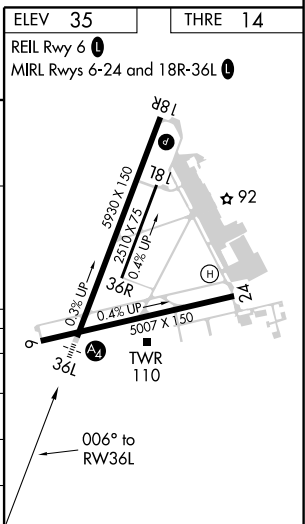
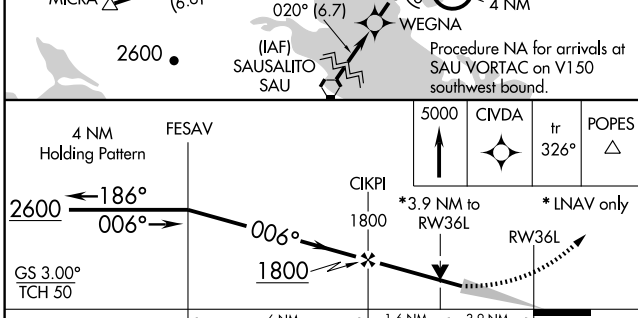
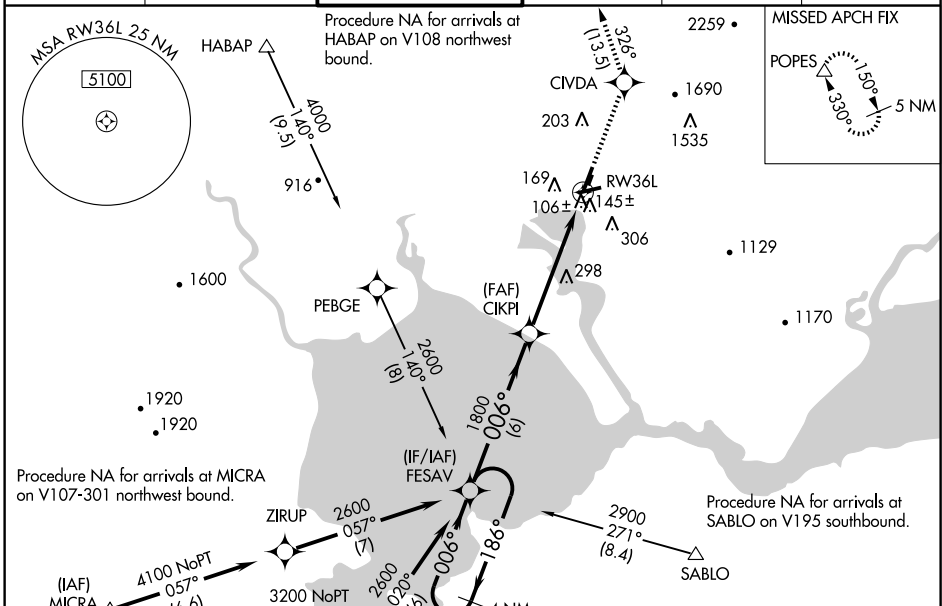
NAPA COUNTY (APC)

⚠ Inoperative table does not apply. For uncompensated Baro-VNAV systems, LNAV/VNAV NA below -15°C (5°F) or above 43°C (109°F). DME/DME RNP-0.3 NA. When local altimeter setting not received, use Concord altimeter setting and increase all DA 41 feet, all MDA 60 feet. VDP and Baro-VNAV NA when using Concord altimeter setting.

MAIS 

MISSED APPROACH: Climb to 5000 direct CIVDA and on track 326° to POPES and hold, continue climb-in-hold to 5000.

ATIS 124.05	OAKLAND CENTER 127.8 353.5	NAPA TOWER ★ 118.7 (CTAF) 0 257.8	GND CON 121.7	CLNC DEL 127.85	UNICOM 122.95
-----------------------	--------------------------------------	---------------------------------------------	-------------------------	---------------------------	-------------------------



CATEGORY	A	B	C	D
LPV DA		1246-5	1232 (1300-5)	
LNAV/VNAV DA		1039-4	1025 (1100-4)	
LNAV MDA	1300-1¼	1286 (1300-1¼)	1300-3	1286 (1300-3)
CIRCLING	1300-1¼ 1265 (1300-1¼)	1300-1½ 1265 (1300-1½)	1300-3	1265 (1300-3)

SW-2, 31 MAY 2012 to 28 JUN 2012

SW-2, 31 MAY 2012 to 28 JUN 2012

WAAS CH 40313 W36B	APP CRS 006°	Rwy Idg THRE 14 Apt Elev 35	5930
----------------------------------------	------------------------	----------------------------------------------------	-------------

RNAV (GPS) Z RWY 36L

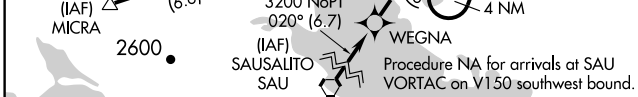
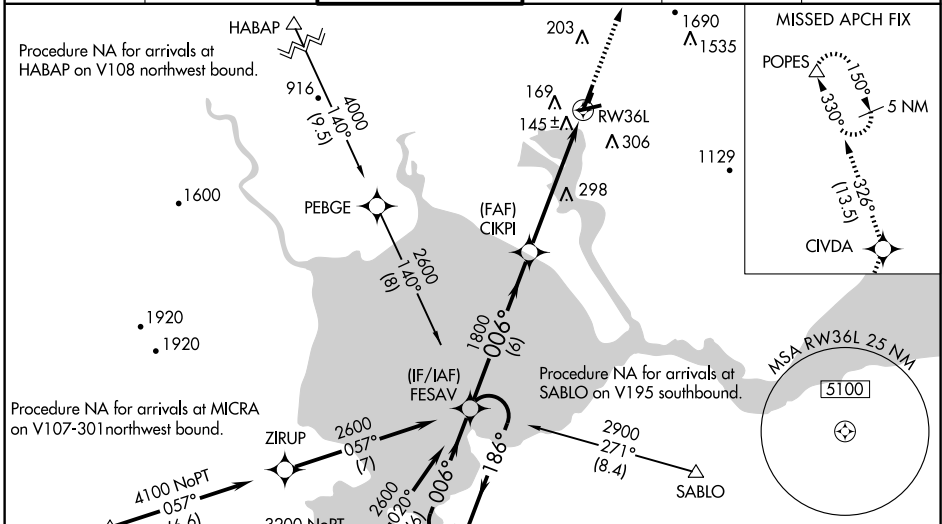
NAPA COUNTY (APC)

⚠ For uncompensated Baro-VNAV systems, LNAV/VNAV NA below -15°C (5°F) or above 43°C (109°F). DME/DME RNP-0.3 NA. When local altimeter setting not received, use Concord altimeter setting and increase all DA 41 feet, all MDA 60 feet, and increase visibility LNAV/VNAV all Cats ½ mile and LNAV Cats C/D and Circling Cat C ¼ mile. VDP and Baro-VNAV NA when using Concord altimeter setting. For inoperative MALS, increase visibility LNAV/VNAV Cat D ¼ mile and LNAV Cats C/D ⅓ mile. For inoperative MALS when using Concord altimeter setting, increase visibility LPV all Cats ⅓ mile, LNAV/VNAV all Cats ⅓ mile, and LNAV Cat D ¼ mile. Missed approach requires minimum climb of 480 feet per NM to 2200. If unable, see RNAV (GPS) Y RWY 36L.

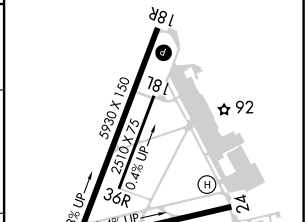
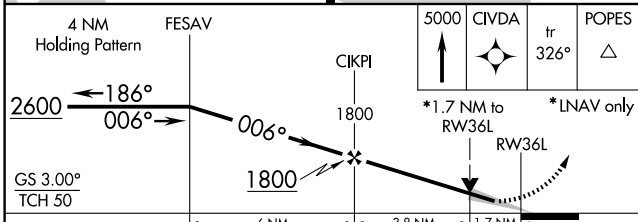
MALS
⚠

MISSED APPROACH:
Climb to 5000 direct CIVDA and on track 326° to POPES and hold, continue climb-in-hold to 5000.

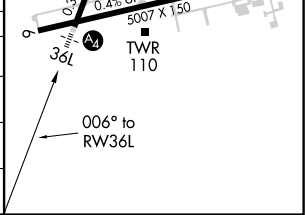
ATIS 124.05	OAKLAND CENTER 127.8 353.5	NAPA TOWER ★ 118.7 (CTAF) 0 257.8	GND CON 121.7	CLNC DEL 127.85	UNICOM 122.95
-----------------------	--------------------------------------	---------------------------------------------	-------------------------	---------------------------	-------------------------



ELEV 35	THRE 14
REIL Rwy 6	MIRL Rwys 6-24 and 18R-36L



CATEGORY	A	B	C	D
LPV DA		264-¾	250 (300-¾)	
LNAV/VNAV DA		369-7/8	355 (400-7/8)	
LNAV MDA	600-¾	586 (600-¾)	600-1¾	586 (600-1¾)
CIRCLING	700-1 665 (700-1)	880-1¼ 845 (900-1¼)	980-2¾ 945 (1000-2¾)	1240-3 1205 (1300-3)



SW-2, 31 MAY 2012 to 28 JUN 2012

SW-2, 31 MAY 2012 to 28 JUN 2012

VORTAC	SGD	APP CRS	Rwy Idg	5007
112.1		050°	THRE	14
Chan 58			Apt Elev	35

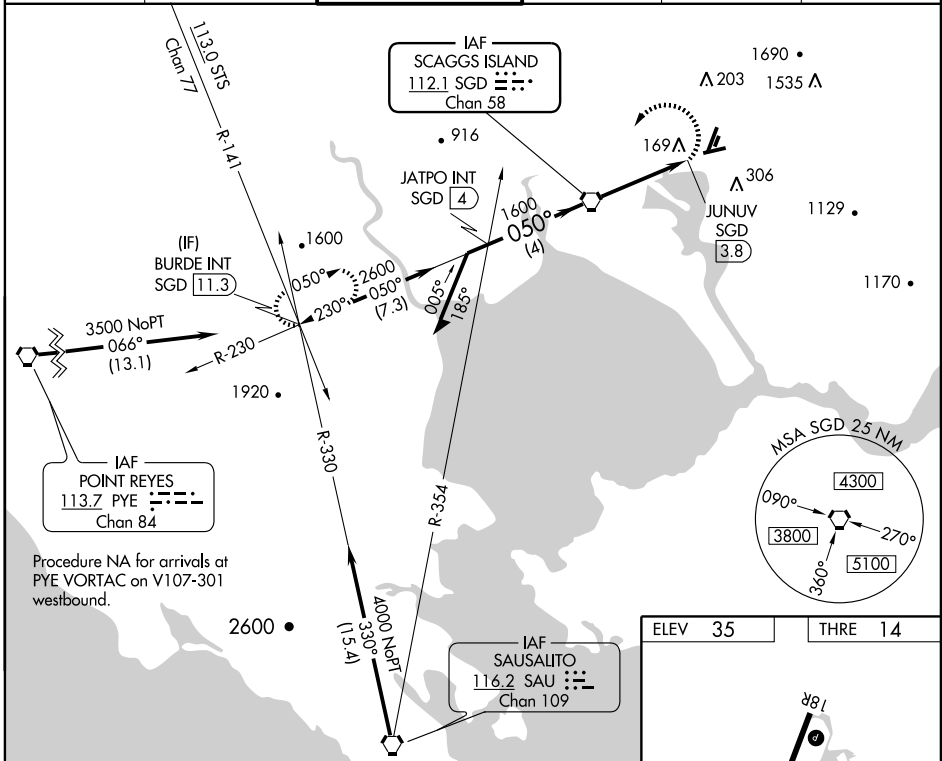
VOR RWY 6

NAPA COUNTY (APC)

⚠ Circling NA northeast of Rwy 18R and 24. Visibility reduction by helicopters NA.
⚠ When local altimeter setting not received, use Concord altimeter setting and increase all MDA 60 feet and Circling Cat C visibility 1/4 mile. VDP NA with Concord altimeter setting.

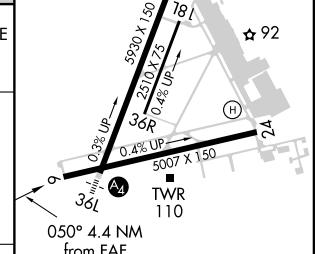
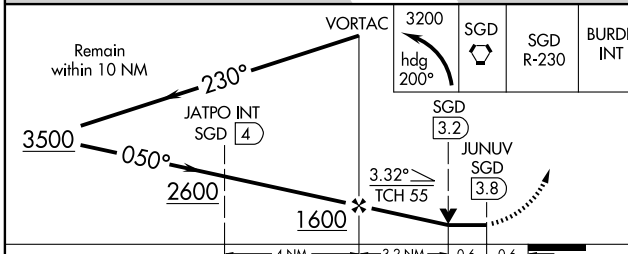
MISSED APPROACH: Climbing left turn to 3200 on heading 200° to SGD VORTAC R-230 to BURDE INT/SGD 11.3 DME and hold.

ATIS 124.05	OAKLAND CENTER 127.8 353.5	NAPA TOWER ★ 118.7 (CTAF) 257.8	GND CON 121.7	CLNC DEL 127.85	UNICOM 122.95
-----------------------	--------------------------------------	-------------------------------------------	-------------------------	---------------------------	-------------------------



SW-2, 31 MAY 2012 to 28 JUN 2012

SW-2, 31 MAY 2012 to 28 JUN 2012



CATEGORY	A	B	C	D
S-6	460-1	446 (500-1)	460-1 3/8	446 (500-1 3/8)
CIRCLING	600-1 565 (600-1)	620-1 585 (600-1)	720-2 685 (700-2)	1240-3 1205 (1300-3)

ELEV	35	THRE	14		
REIL Rwy 6					
MIRL Rwy 6-24 and 18R-36L					
FAF to MAP 3.8 NM					
Knots	60	90	120	150	180
Min:Sec	3:48	2:32	1:54	1:31	1:16