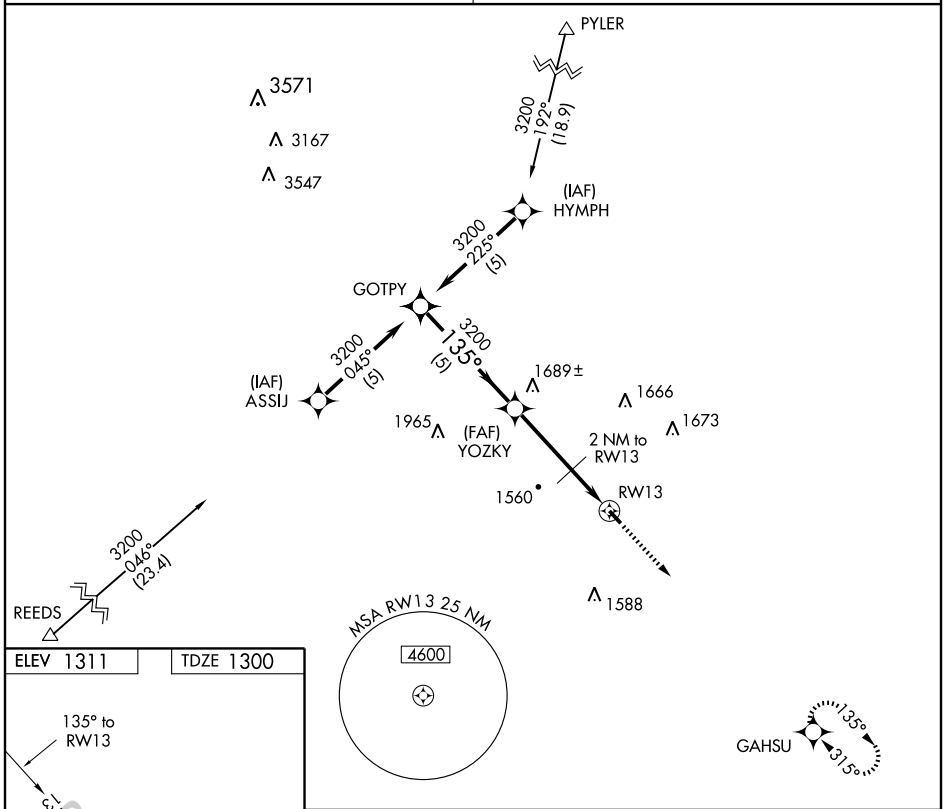


# GPS RWY 13

AVA BILL MARTIN MEMORIAL (AOV)

APP CRS <b>135°</b>	Rwy Idg TDZE Apt Elev	<b>3634</b> <b>1300</b> <b>1311</b>
------------------------	-----------------------------	---

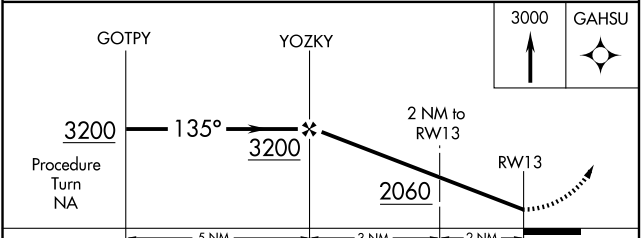
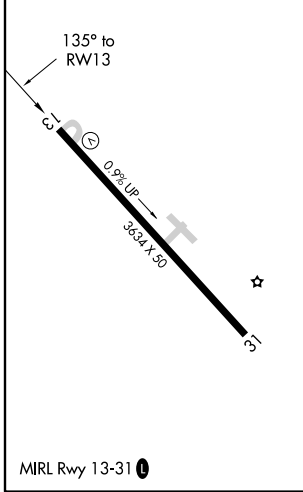
<p><b>▲</b> NA Use Springfield altimeter setting.</p>	<p>MISSED APPROACH: Climb to 3000 direct GAHSU WP and hold.</p>
<p>SPRINGFIELD APP CON <b>126.35</b></p>	<p>UNICOM <b>122.7 (CTAF)</b></p>



NC-3, 31 MAY 2012 to 28 JUN 2012

NC-3, 31 MAY 2012 to 28 JUN 2012

ELEV 1311	TDZE 1300
-----------	-----------



CATEGORY	A	B	C	D
S-13	1780-1	480 (500-1)		NA
CIRCLING	1980-1	669 (700-1)		NA

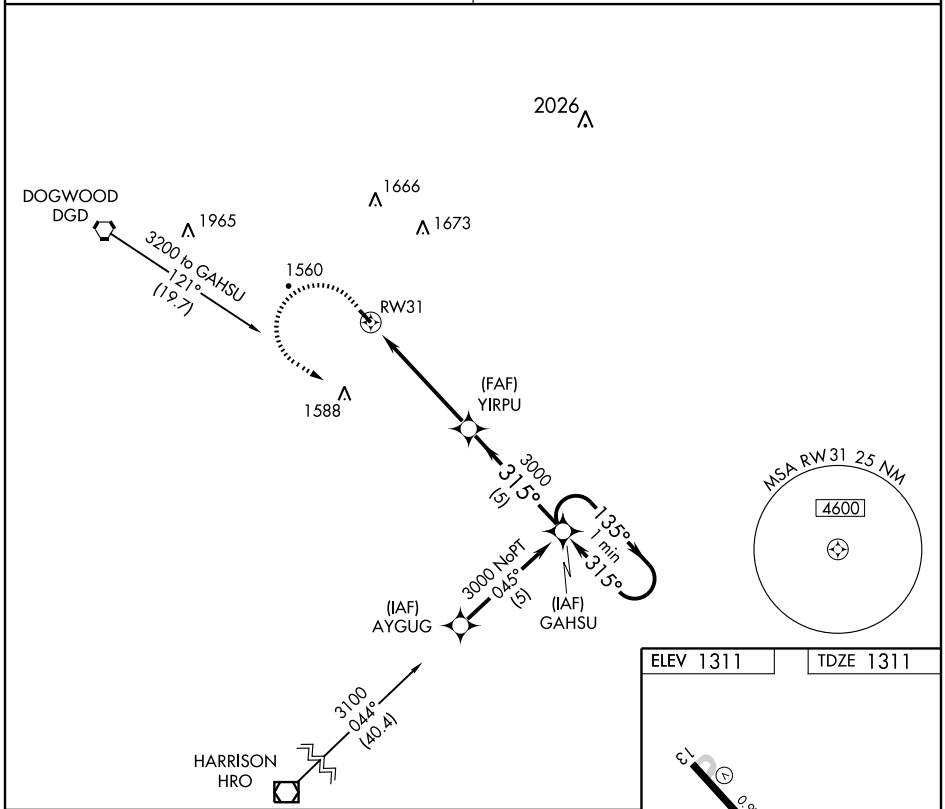
# GPS RWY 13

# GPS RWY 31

AVA BILL MARTIN MEMORIAL (AOV)

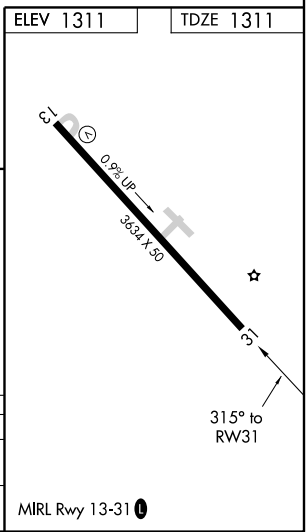
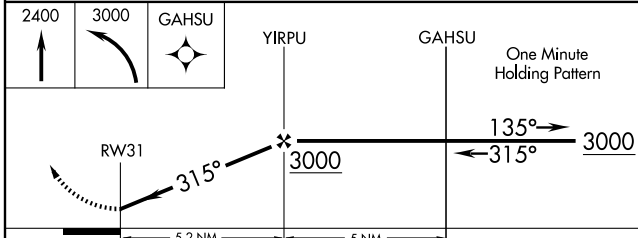
APP CRS <b>315°</b>	Rwy Idg <b>3634</b>
	TDZE <b>1311</b>
	Apt Elev <b>1311</b>

<p><b>▲</b> NA Use Springfield altimeter setting.</p>	<p>MISSED APPROACH: Climb to 2400 then climbing left turn to 3000 direct GAHSU WP and hold.</p>
<p>SPRINGFIELD APP CON <b>126.35</b></p>	<p>UNICOM <b>122.7</b> (CTAF) <b>0</b></p>



NC-3, 31 MAY 2012 to 28 JUN 2012

NC-3, 31 MAY 2012 to 28 JUN 2012



CATEGORY	A	B	C	D
S-31	1940-1	629 (700-1)		NA
CIRCLING	1980-1	669 (700-1)		NA

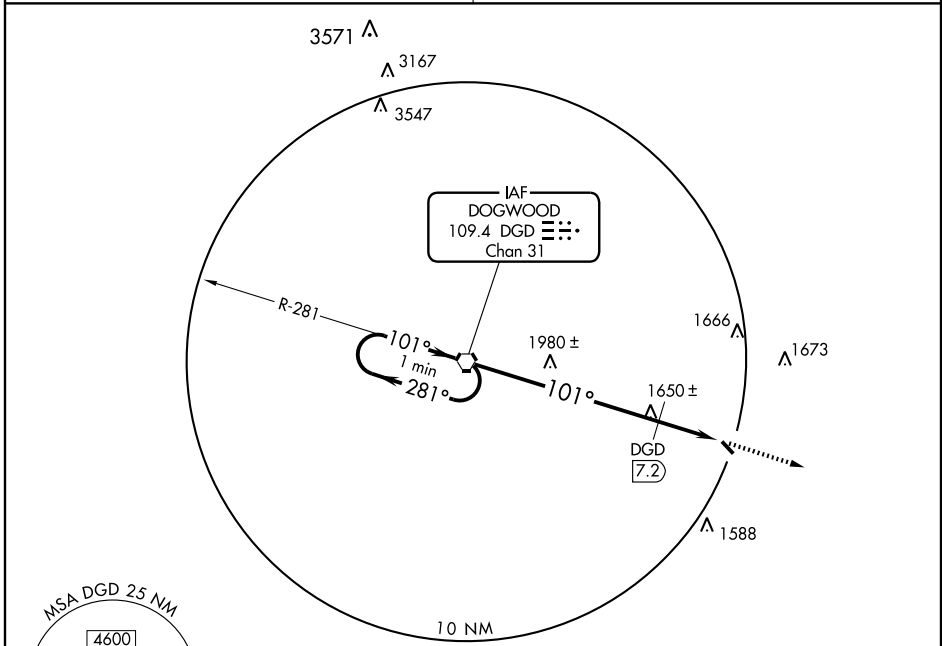
# GPS RWY 31

VORTAC DGD <b>109.4</b> Chan <b>31</b>	APP CRS <b>101°</b>	Rwy Idg TDZE Apt Elev	<b>N/A</b> <b>N/A</b> <b>1311</b>
--	------------------------	-----------------------------	---

# VOR-A

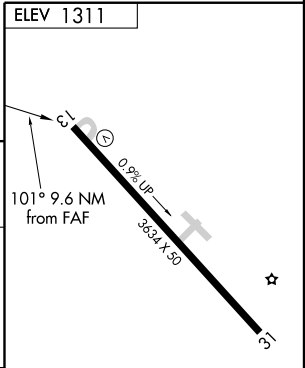
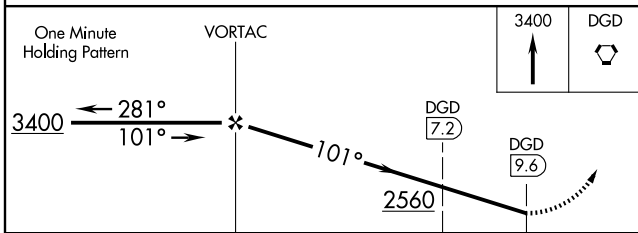
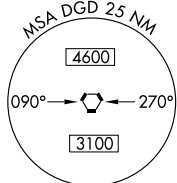
AVA BILL MARTIN MEMORIAL (AOV)

<p><b>▲</b> NA Use Springfield altimeter setting.</p>	<p>MISSED APPROACH: Climb to 3400 then direct DGD VORTAC and hold.</p>
<p>SPRINGFIELD APP CON <b>126.35</b></p>	<p>UNICOM <b>122.7</b> (CTAF) <b>①</b></p>



NC-3, 31 MAY 2012 to 28 JUN 2012

NC-3, 31 MAY 2012 to 28 JUN 2012



CATEGORY	A	B	C	D
CIRCLING	2560-1¼ 1249 (1300-1¼)	2560-1½ 1249 (1300-1½)		NA
DME MINIMUMS				
CIRCLING	2000-1	689 (700-1)		NA

MIRL Rwy 13-31 <b>①</b>					
FAF to MAP 9.6 NM					
Knots	60	90	120	150	180
Min:Sec	9:36	6:24	4:48	3:50	3:12