

ALTOONA, PENNSYLVANIA

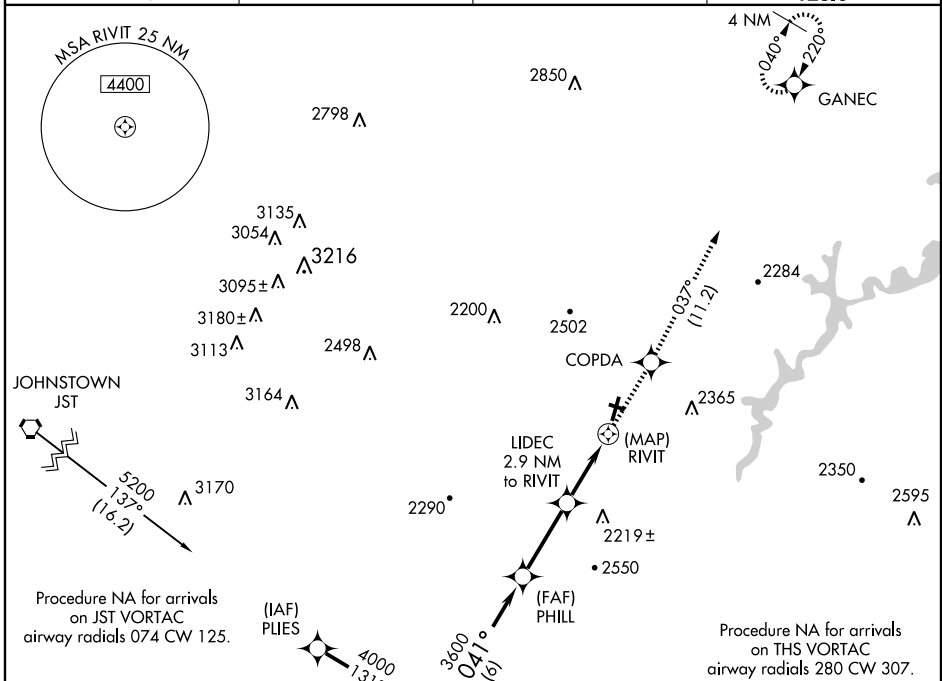
AL-100 (FAA)

RNAV (GPS) RWY 3

ALTOONA-BLAIR COUNTY (A00)

APP CRS	Rwy Idg	5465
041°	TDZE	1504
	Apt Elev	1504

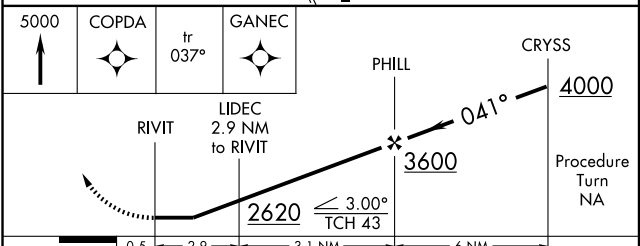
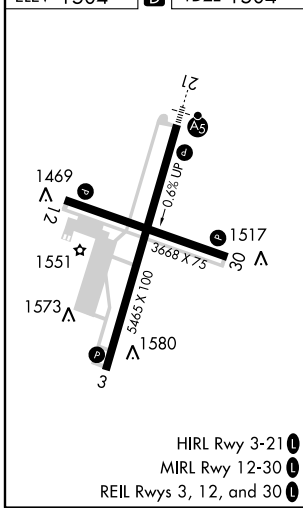
		DME/DME RNP-0.3 NA.	MISSED APPROACH: Climb to 5000 direct COPDA and via 037° track to GANEC and hold.	
ASOS	JOHNSTOWN APP CON ★	ALTOONA RADIO	CTAF	
127.125	135.975 244.875	123.6	123.6	



NE-4, 31 MAY 2012 to 28 JUN 2012

NE-4, 31 MAY 2012 to 28 JUN 2012

ELEV 1504		TDZE 1504
-----------	--	-----------



CATEGORY	A	B	C	D
LNNAV MDA	2340-1 836 (900-1)	2340-1¼ 836 (900-1¼)	2340-2½ 836 (900-2½)	2340-2¾ 836 (900-2¾)
CIRCLING	2340-1 836 (900-1)	2340-1¼ 836 (900-1¼)	2340-2½ 836 (900-2½)	2620-3 1116 (1200-3)

ALTOONA, PENNSYLVANIA
Orig 12040

40°18'N-78°19'W

ALTOONA-BLAIR COUNTY (A00)
RNAV (GPS) RWY 3

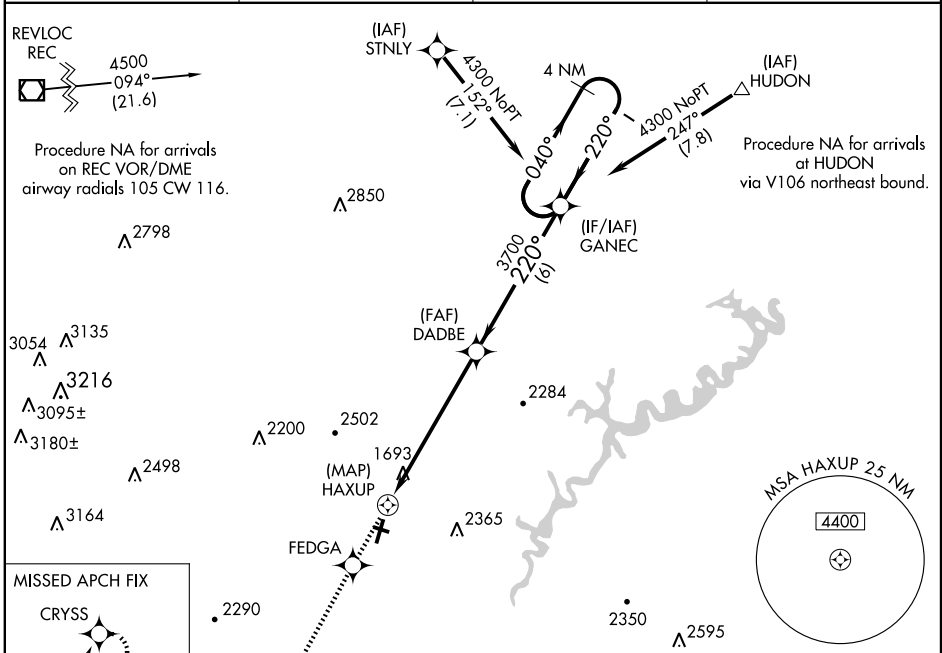
RNAV (GPS) Y RWY 21

ALTOONA-BLAIR COUNTY (A00)

APP CRS	Rwy Idg	5465
220°	TDZE	1487
	Apt Elev	1504

<p>▼ DME/DME RNP-0.3 NA. Circling to Rwy 30 NA at night. ▲ For inoperative MALSR, increase LNAV Cats A and B visibility to 1 mile.</p>	<p>MALSR </p>	<p>MISSED APPROACH: Climb to 5000 direct FEDGA and via 219° track to CRYSS and hold, continue climb-in-hold to 5000.</p>
---	---------------	--

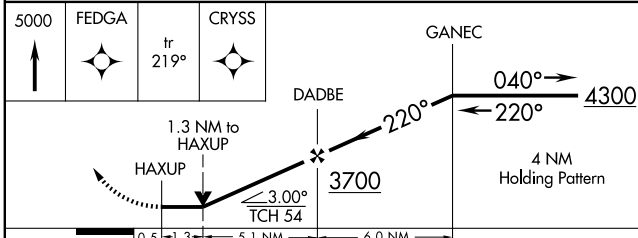
ASOS 127.125	JOHNSTOWN APP CON * 135.975 244.875	ALTOONA RADIO 123.6	CTAF 123.6
------------------------	---	-------------------------------	-------------------



NE-4, 31 MAY 2012 to 28 JUN 2012

NE-4, 31 MAY 2012 to 28 JUN 2012

ELEV 1504	D	TDZE 1487
-----------	----------	-----------



HIRL Rwy 3-21 **1**

MIRL Rwy 12-30 **1**

REIL Rws 3, 12, and 30 **1**

CATEGORY	A	B	C	D
LNAV MDA	2080- $\frac{3}{4}$ 593 (600- $\frac{3}{4}$)		2080-1 593 (600-1)	2080-1 $\frac{1}{4}$ 593 (600-1 $\frac{1}{4}$)
CIRCLING	2080-1 576 (600-1)		2080-1 $\frac{1}{2}$ 576 (600-1 $\frac{1}{2}$)	2620-3 1116 (1200-3)

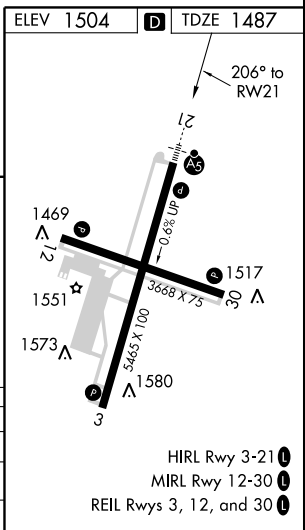
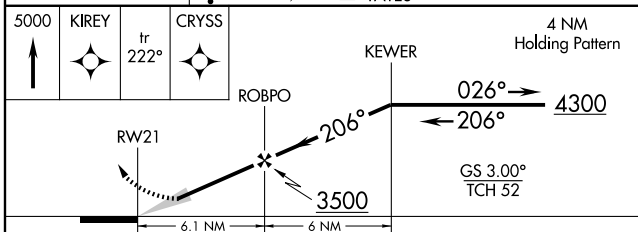
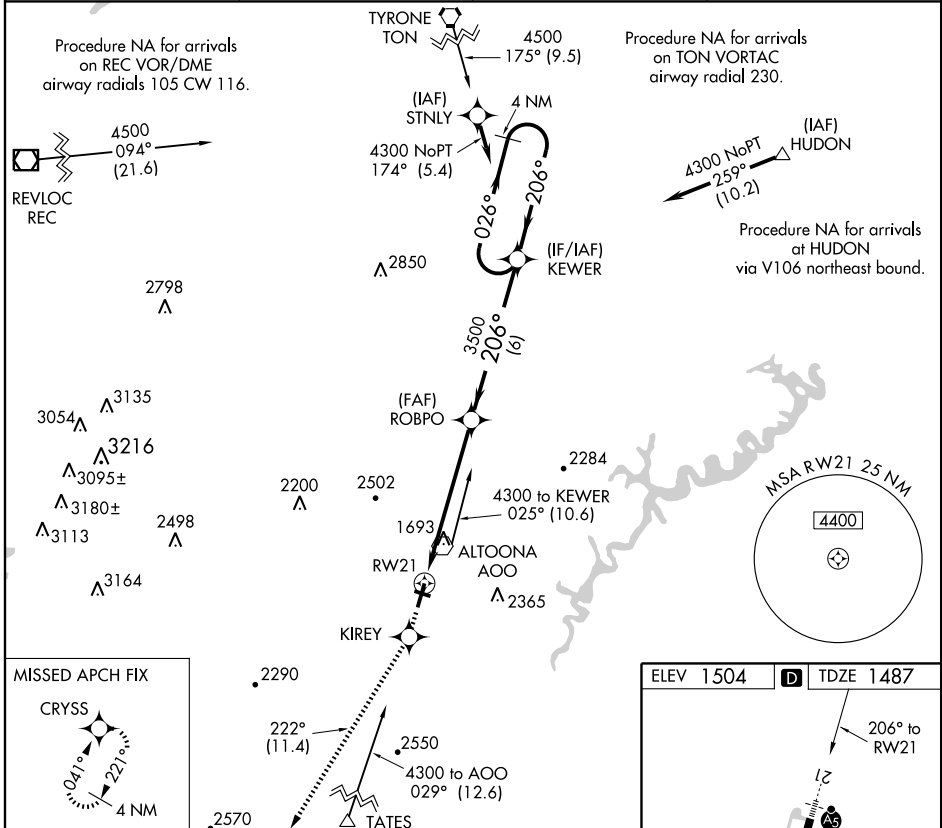
RNAV (GPS) Z RWY 21

ALTOONA-BLAIR COUNTY (A00)

WAAS CH 90105 W21A	APP CRS 206°	Rwy Idg TDZE Apt Elev	5465 1487 1504
--	------------------------	-----------------------------	---

▽ DME/DME RNP-0.3 NA. For inoperative MALSR, increase LPV Cat A-D visibility to 1¼ mile.	MALSR 	MISSED APPROACH: Climb to 5000 direct KIREY and via 222° track to CRYSS and hold, continue climb-in-hold to 5000.
---	------------------	--

ASOS 127.125	JOHNSTOWN APP CON ★ 135.975 244.875	ALTOONA RADIO 123.6	CTAF 123.6
------------------------	---	-------------------------------	-------------------



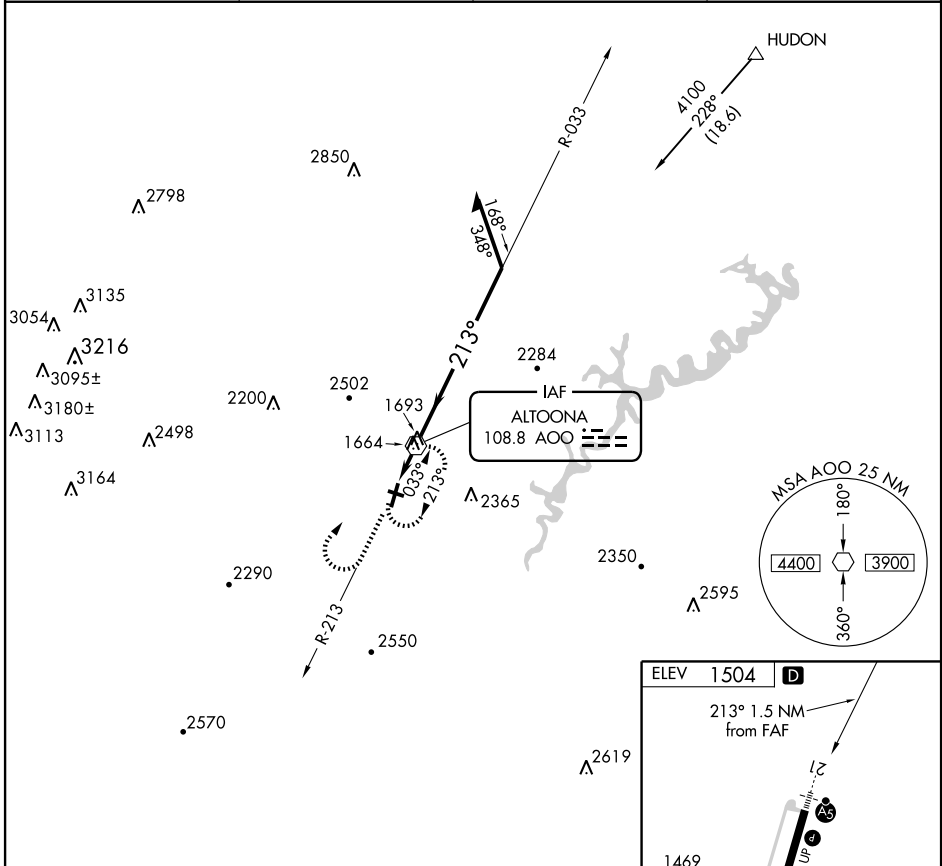
CATEGORY	A	B	C	D
LPV DA	1800-¾ 313 (400-¾)			
LNAV/VNAV DA	NA			
LNAV MDA	NA			

NE-4, 31 MAY 2012 to 28 JUN 2012

NE-4, 31 MAY 2012 to 28 JUN 2012

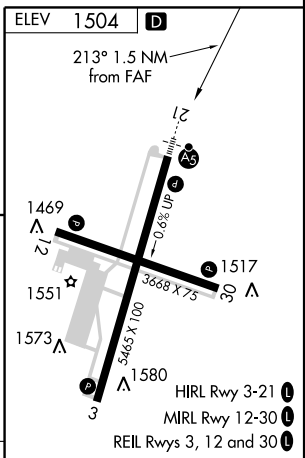
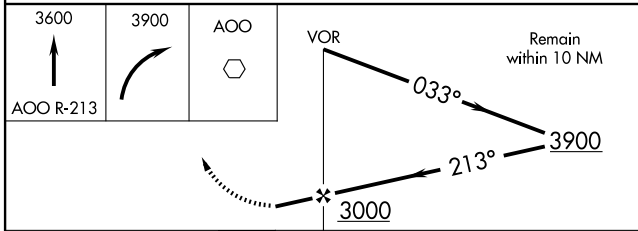
VOR AOO 108.8	APP CRS 213°	Rwy Idg TDZE Apt Elev	N/A N/A 1504
-------------------------	------------------------	-----------------------------	---------------------------

		MISSED APPROACH: Climb to 3600 via AOO R-213, then climbing right turn to 3900 direct AOO VOR and hold.	
ASOS 127.125	JOHNSTOWN APP CON ★ 135.975 244.875	ALTOONA RADIO 123.6	CTAF 123.6



NE-4, 31 MAY 2012 to 28 JUN 2012

NE-4, 31 MAY 2012 to 28 JUN 2012



CATEGORY	A	B	C	D	FAF to MAP 1.5 NM					
CIRCLING	2420-1¼	916 (1000-1¼)	2420-2¾	2620-3	Knots	60	90	120	150	180
			916 (1000-2¾)	1116 (1200-3)	Min:Sec	1:30	1:00	0:45	0:36	0:30