

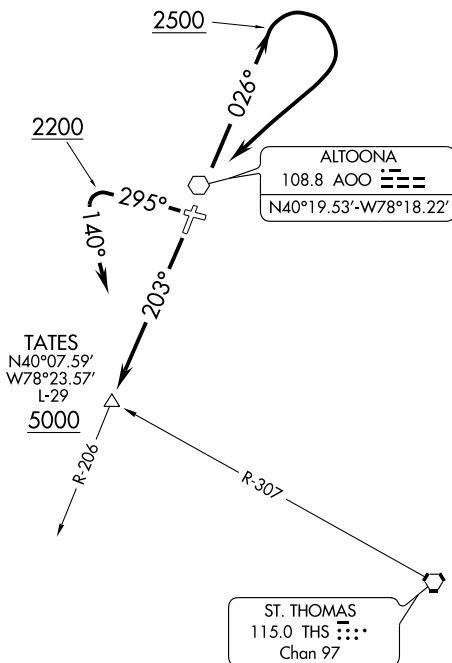
(TATES3.TATES) 09127

SL-100 (FAA)

ALTOONA-BLAIR COUNTY (A00)
ALTOONA, PENNSYLVANIA

TATES THREE DEPARTURE

CLEVELAND CENTER
121.2 299.2
CTAF 123.0
ASOS 127.125
ALTOONA RADIO
123.6



TAKE-OFF MINIMUMS:

Rwy 12, NA - Obstacles.

Rwy 3, STANDARD.

Rwy 21, STANDARD with minimum climb of 350 feet per NM to 5000.

Rwy 30, STANDARD with the following minimum climb requirements: Obstacle climb of 210 feet per NM to 2500; ATC climb of 250 feet per NM to 5000.

TAKE-OFF OBSTACLES:

Rwy 3: Numerous trees 1537' from DER, 904' left of centerline, 100' AGL/1554' MSL.
Numerous trees 5759' from DER, 1600' right of centerline, 100' AGL/1642' MSL.

Rwy 21: Numerous trees 2541' from DER, 369' left of centerline, 100' AGL/1583' MSL.
Numerous trees 1080' from DER, 511' right of centerline, 100' AGL/1550' MSL.

NOTE: Chart not to scale.



DEPARTURE ROUTE DESCRIPTION

TAKE-OFF RUNWAY 3: Climb direct AOO VOR, then via AOO R-026 to 2500, then climbing right turn direct AOO VOR, then via AOO R-206 to TATES INT....

TAKE-OFF RUNWAY 21: Climb via heading 203° and AOO R-206 to TATES INT....

TAKE-OFF RUNWAY 30: Climb via heading 295° to 2200, then climbing left turn heading 140° to intercept AOO R-206 to TATES INT....

....Cross TATES INT at or above 5000. Then via (assigned route).

TATES THREE DEPARTURE

(TATES3.TATES) 09127

ALTOONA, PENNSYLVANIA
ALTOONA-BLAIR COUNTY (A00)

NE-4, 19 NOV 2009 to 17 DEC 2009

NE-4, 19 NOV 2009 to 17 DEC 2009

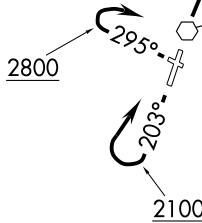
WILTT THREE DEPARTURE

CLEVELAND CENTER
121.2 299.2
CTAF 123.0
ASOS 127.125
ALTOONA RADIO
123.6

JOHNSTOWN
113.0 JST ---
Chan 77

WILTT
N40°30.20'
W78°13.44'
L-29
5000

ALTOONA
108.8 AOO ---
N40°19.53'-W78°18.22'



TAKE-OFF MINIMUMS:

- Rwy 12, NA - Obstacles.
- Rwy 3, STANDARD with minimum climb of 280 feet per NM to 5000 (ATC).
- Rwy 21, STANDARD with minimum climb of 300 feet per NM to 2300.
- Rwy 30, STANDARD with minimum climb of 275 feet per NM to 2800.

TAKE-OFF OBSTACLES:

- Rwy 3: Numerous trees 1537' from DER, 904' left of centerline, 100' AGL/1554' MSL.
Numerous trees 5759' from DER, 1600' right of centerline, 100' AGL/1642' MSL.
- Rwy 21: Numerous trees 2541' from DER, 369' left of centerline, 100' AGL/1583' MSL.
Numerous trees 1080' from DER, 511' right of centerline, 100' AGL/1550' MSL.

NOTE: Chart not to scale.



DEPARTURE ROUTE DESCRIPTION

TAKE-OFF RUNWAY 3: Climb direct AOO VOR. Then via AOO R-026 to WILTT INT....

TAKE-OFF RUNWAY 21: Fly heading 203° to 2100, then climbing right turn direct AOO VOR, then via AOO R-026 to WILTT INT....

TAKE-OFF RUNWAY 30: Fly heading 295° to 2800, then climbing right turn direct AOO VOR, then via AOO R-026 to WILTT INT....

....Cross WILTT INT at or above 5000. Then via (assigned route).

WILTT THREE DEPARTURE

NE-4, 19 NOV 2009 to 17 DEC 2009

NE-4, 19 NOV 2009 to 17 DEC 2009