

NOTE: Chart not to scale.

NOTE: DME and RADAR required.

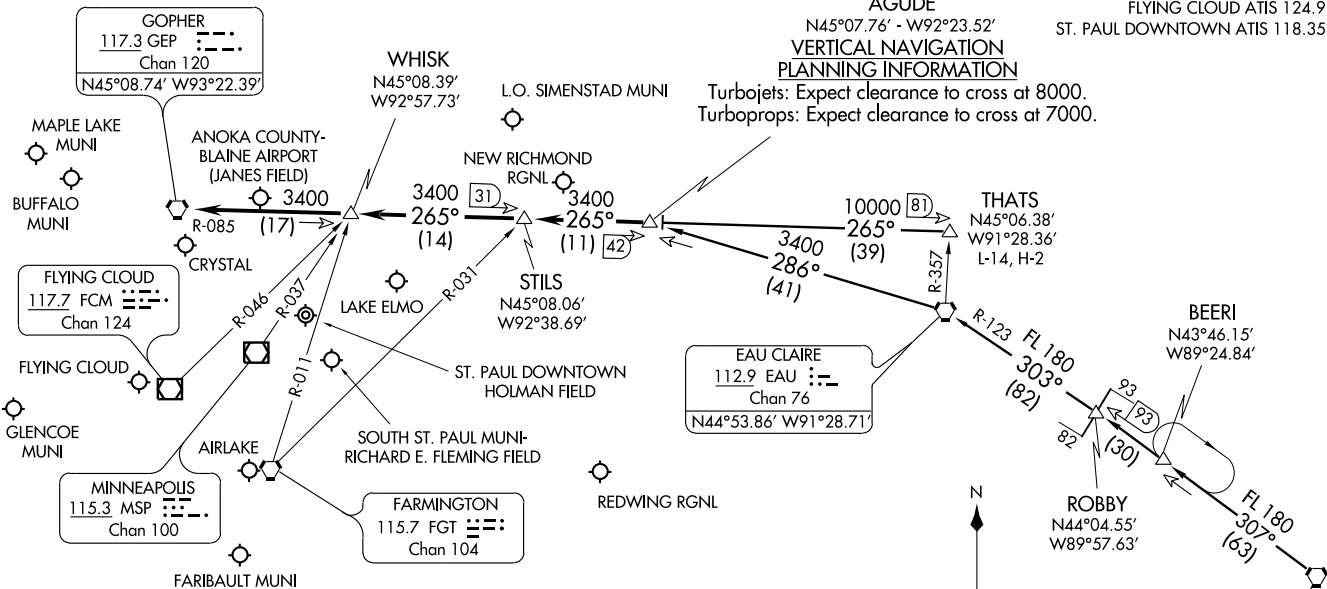
MINNEAPOLIS APP CON
126.95 335.5
ANOKA COUNTY ATIS 120.625
CRYSTAL ATIS 124.475
FLYING CLOUD ATIS 124.9
ST. PAUL DOWNTOWN ATIS 118.35

AGUDE
N45°07.76' - W92°23.52'
VERTICAL NAVIGATION
PLANNING INFORMATION

Turbojets: Expect clearance to cross at 8000.
Turboprops: Expect clearance to cross at 7000.

AGUDE THREE ARRIVAL
(AGUDE.AGUDE3) 11349

(AGUDE.AGUDE3) 11349
AGUDE THREE ARRIVAL



BADGER TRANSITION (BAE.AGUDE3): From over BAE VORTAC via BAE R-307 and EAU R-123 to EAU VORTAC, then via EAU R-286 to AGUDE/EAU 41 DME. Thence

THATS TRANSITION (THATS.AGUDE3): From over THATS INT via GEP R-085 to AGUDE/GEP 42 DME. Thence

. . . . From over AGUDE/GEP 42 DME via GEP R-085 to GEP VORTAC, then expect radar vectors to final approach course.

MINNEAPOLIS-ST. PAUL, MINNESOTA

MINNEAPOLIS-ST. PAUL, MINNESOTA

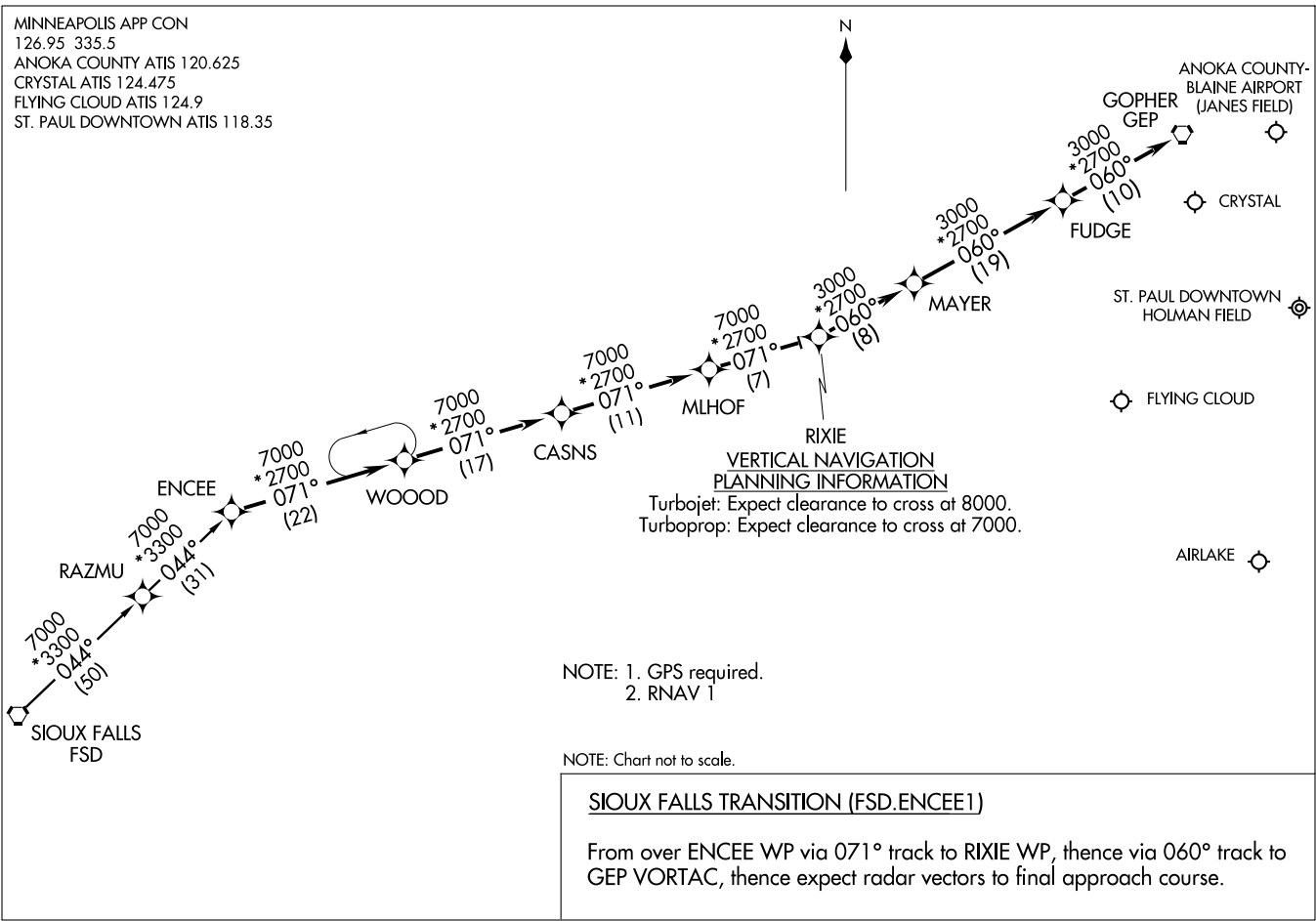
ENCEE ONE ARRIVAL (RNAV)
(ENCEE ENCEE1) 07242

(ENCEE ENCEE1) 07242
ENCEE ONE ARRIVAL (RNAV)

MINNEAPOLIS APP CON
126.95 335.5
ANOKA COUNTY ATIS 120.625
CRYSTAL ATIS 124.475
FLYING CLOUD ATIS 124.9
ST. PAUL DOWNTOWN ATIS 118.35

MINNEAPOLIS-ST. PAUL, MINNESOTA

MINNEAPOLIS-ST. PAUL, MINNESOTA



**VERTICAL NAVIGATION
PLANNING INFORMATION**

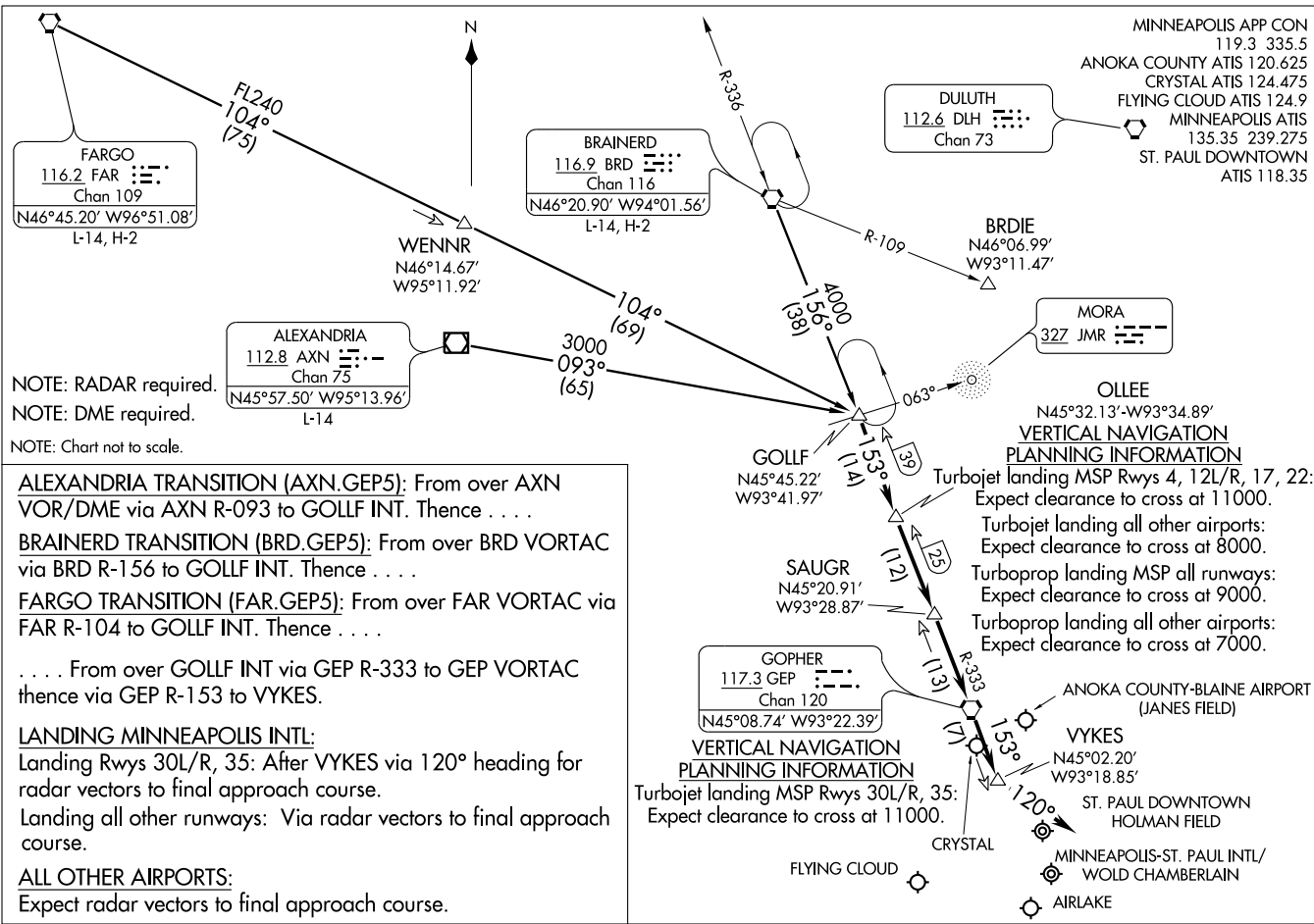
Turbojet: Expect clearance to cross at 8000.
Turboprop: Expect clearance to cross at 7000.

NOTE: 1. GPS required.
2. RNAV 1

NOTE: Chart not to scale.

SIoux FALLS TRANSITION (FSD.ENCEE1)

From over ENCEE WP via 071° track to RIXIE WP, thence via 060° track to GEP VORTAC, thence expect radar vectors to final approach course.



NOTE: RADAR required.
NOTE: DME required.
NOTE: Chart not to scale.

ALEXANDRIA TRANSITION (AXN.GEP5): From over AXN VOR/DME via AXN R-093 to GOLLF INT. Thence

BRainerd TRANSITION (BRD.GEP5): From over BRD VORTAC via BRD R-156 to GOLLF INT. Thence

FARGO TRANSITION (FAR.GEP5): From over FAR VORTAC via FAR R-104 to GOLLF INT. Thence

. . . . From over GOLLF INT via GEP R-333 to GEP VORTAC thence via GEP R-153 to VYKES.

LANDING MINNEAPOLIS INTL:
Landing Rwy 30L/R, 35: After VYKES via 120° heading for radar vectors to final approach course.
Landing all other runways: Via radar vectors to final approach course.

ALL OTHER AIRPORTS:
Expect radar vectors to final approach course.

ARRIVAL DESCRIPTION

FORT DODGE TRANSITION (FOD.TWOLF2): From over FOD VORTAC via FOD R-032 to TWOLF/FOD 52 DME, Thence

....From over TWOLF/GEP 112 DME via GEP R-178 to KGEED/GEP 84 DME, then as depicted to TRGET INT/GEP 55 DME. Thence....

LANDING MSP RWYS 12L/R: From over TRGET INT via FGT R-201 to FGT VORTAC, then via FGT R-330 to SIKK INT/FGT 11 DME, then via heading 300° for radar vectors to final approach course.

LANDING MSP RWYS 30L/R, 4, 22, 17, 35: From over TRGET INT via FGT R-201 to FGT VORTAC, then via radar vectors to final approach course.

LANDING ALL OTHER AIRPORTS: From over TRGET INT via FCM R-180 to FCM VOR/DME, then expect radar vectors to final approach course.

NC-1, 31 MAY 2012 to 28 JUN 2012

NC-1, 31 MAY 2012 to 28 JUN 2012