
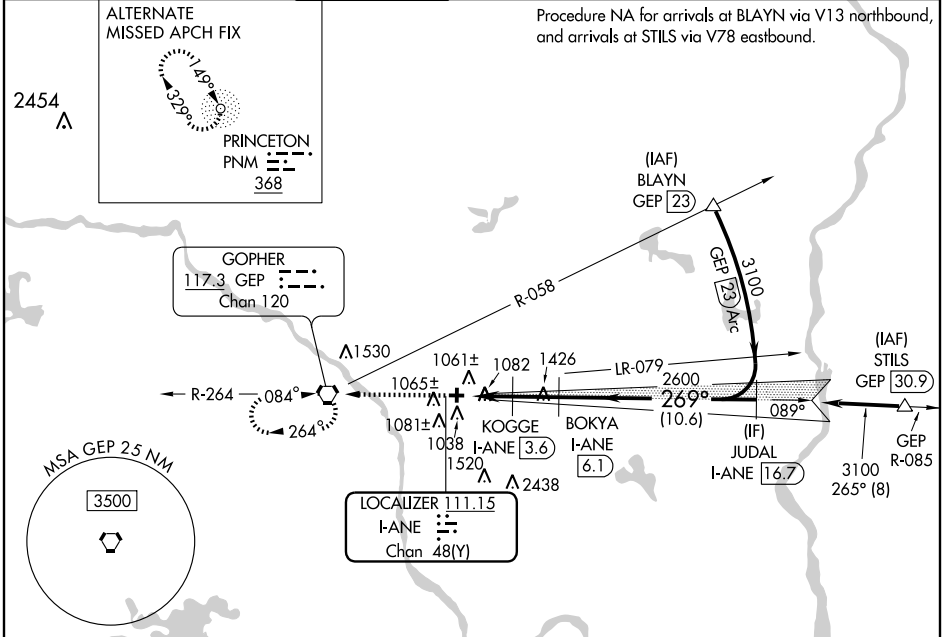


LOC/DME I-ANE <b>111.15</b> Chan 48 (Y)	APP CRS <b>269°</b>	Rwy Idg 5000	TDZE 910
		Apt Elev 912	

MINNEAPOLIS/**ILS or LOC/DME RWY 27**  
ANOKA COUNTY-BLAINE AIRPORT (JANES FIELD) (A.N.E.)

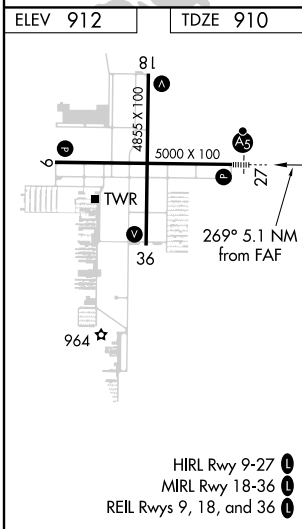
<p><b>▽</b> If local altimeter setting not received, use Crystal altimeter setting and increase all DAs/MDAs 40 feet. <b>▲</b> VDP NA with Crystal altimeter setting.</p>	<p>MALSR  </p>	<p>MISSED APPROACH: Climb to 2700 direct GEP VORTAC and hold.</p>
---	---	---

ATIS <b>120.625</b>	MINNEAPOLIS APP CON <b>126.5</b>	ANOKA TOWER* <b>132.4</b> (CTAF) <b>0</b>	GND CON <b>121.85</b>	CLNC DEL <b>121.3</b>	MINNEAPOLIS CLNC DEL <b>121.85</b> (When tower closed)	UNICOM <b>122.95</b>
------------------------	-------------------------------------	--	--------------------------	--------------------------	--	-------------------------




NC-1, 31 MAY 2012 to 28 JUN 2012

NC-1, 31 MAY 2012 to 28 JUN 2012



**DME REQUIRED**

2700	GEP	Use I-ANE DME when on the localizer course.	JUDAL I-ANE <b>16.7</b>
			
		KOGGE I-ANE <b>3.6</b>	BOKYA I-ANE <b>6.1</b>
		JUDAL I-ANE <b>16.7</b>	
		2600	3100
		1780	Procedure Turn NA
		2600	GS 3.00°
		269°	TCH 49
		1.2 NM	1.4 NM
		2.5 NM	10.6 NM
CATEGORY	A	B	C
S-ILS 27	1110-½ 200 (200-½)		
S-LOC 27	1340-½ 430 (500-½)	1340-¾ 430 (500-¾)	1340-1 430 (500-1)
CIRCLING	1400-1 488 (500-1)	1400-1½ 488 (500-1½)	1480-2 568 (600-2)

APP CRS	Rwy Idg	<b>4855</b>
<b>179°</b>	TDZE	<b>912</b>
	Apt Elev	<b>912</b>

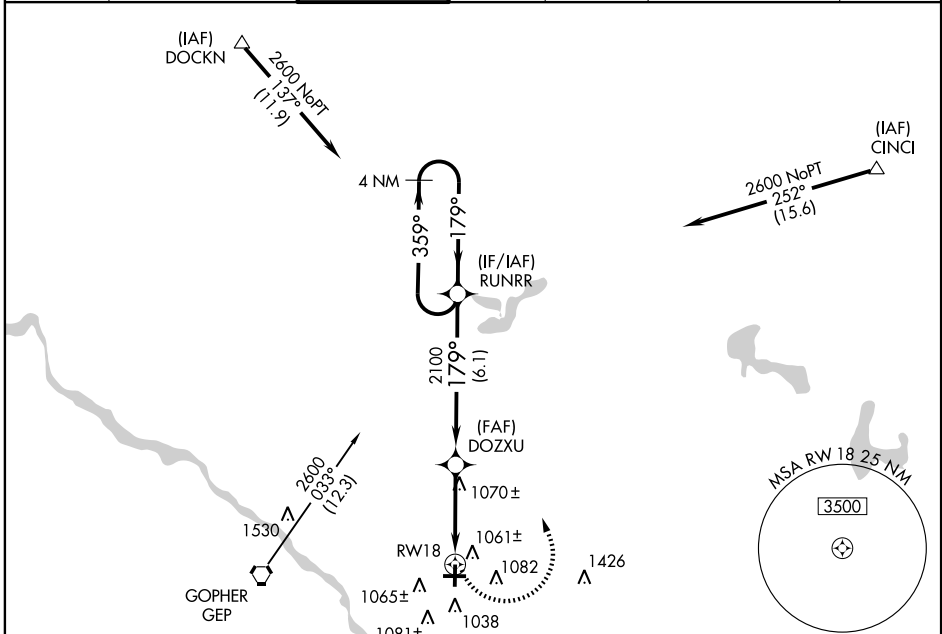
# RNAV (GPS) RWY 18

MINNEAPOLIS/ANOKA COUNTY-BLAINE AIRPORT (JANES FIELD) (A.N.E)

**⚠** DME/DME RNP-0.3 NA. Visibility reduction by helicopters NA. When local altimeter setting not received, use Crystal altimeter setting and increase all MDA 40 feet, increase LNAV Cat C visibility ¼ mile.

**⚠** MISSED APPROACH: Climbing left turn to 2600 direct RUNRR and hold.

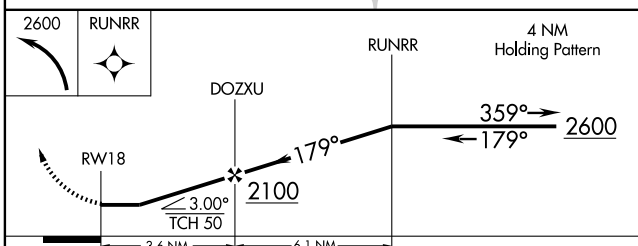
ATIS	MINNEAPOLIS APP CON	ANOKA TOWER*	GND CON	CLNC DEL	MINNEAPOLIS CLNC DEL	UNICOM
<b>120.625</b>	<b>126.5</b>	<b>132.4 (CTAF) 0</b>	<b>121.85</b>	<b>121.3</b>	<b>121.85</b> (When tower closed)	<b>122.95</b>



NC-1, 31 MAY 2012 to 28 JUN 2012

NC-1, 31 MAY 2012 to 28 JUN 2012

Procedure NA for arrivals at GEP VORTAC via airway radials 333 CW 085.



ELEV 912	TDZE 912
----------	----------


HIRL Rwy 9-27 **0**  
MIRL Rwy 18-36 **0**  
REIL Rws 9, 18 and 36 **0**

# RNAV (GPS) RWY 27

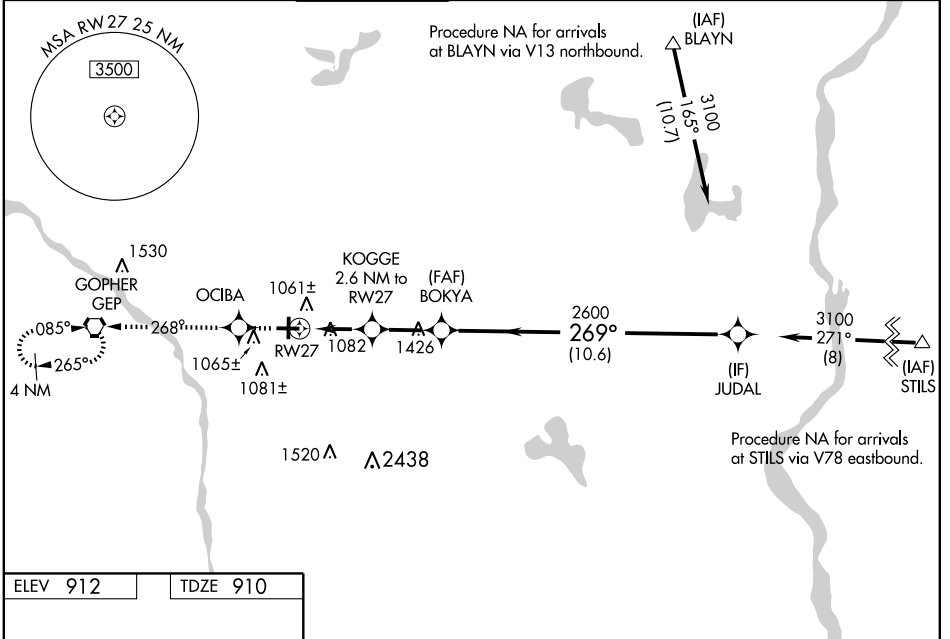
WAAS CH <b>78300</b>	APP CRS <b>269°</b>	Rwy Idg <b>5000</b> TDZE <b>910</b> Apt Elev <b>912</b>
<b>W27A</b>		

MINNEAPOLIS/ ANOKA COUNTY-BLAINE AIRPORT (JANES FIELD) (A.N.E.)

**⚠** Baro-VNAV and VDP NA when using Crystal altimeter setting.  
**⚠** If local altimeter setting not received, use Crystal altimeter setting and increase all DAs/MDAs 40 feet.  
 For uncompensated Baro-VNAV systems, LNAV/VNAV NA below 16°C (4°F) or above 47°C (116°F).  
 DME/DME RNP-0.3 NA.  
 For inoperative MALSR, increase LNAV Cat C visibility to 1¼.

**MALSR**  
  
**MISSED APPROACH:** Climb to 2700 direct OCIBA and via 268° track to GEP VORTAC and hold.

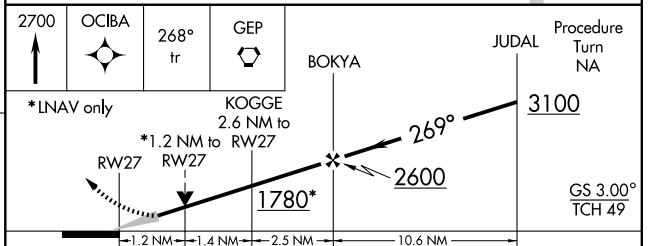
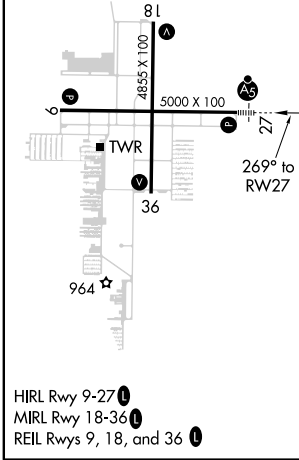
ATIS <b>120.625</b>	MINNEAPOLIS APP CON <b>126.5</b>	ANOKA TOWER* <b>132.4</b> (CTAF) <b>0</b>	GND CON <b>121.85</b>	CLNC DEL <b>121.3</b>	MINNEAPOLIS CLNC DEL <b>121.85</b> (When tower closed)	UNICOM <b>122.95</b>
------------------------	-------------------------------------	--	--------------------------	--------------------------	--	-------------------------



NC-1, 31 MAY 2012 to 28 JUN 2012

NC-1, 31 MAY 2012 to 28 JUN 2012

ELEV 912	TDZE 910
----------	----------



CATEGORY	A	B	C	D
LPV DA		1160-½	250 (300-½)	
LNAV/VNAV DA		1371-1	461 (500-1)	
LNAV MDA		1340-½	430 (500-½)	1340-1 430 (500-1)
CIRCLING	1400-1	488 (500-1)	1400-1½ 488 (500-1½)	1480-2 568 (600-2)

# RNAV (GPS) RWY 27

WAAS CH <b>82312</b> <b>W09A</b>	APP CRS <b>089°</b>	Rwy Idg TDZE Apt Elev	<b>5000</b> <b>910</b> <b>912</b>
--	------------------------	-----------------------------	---

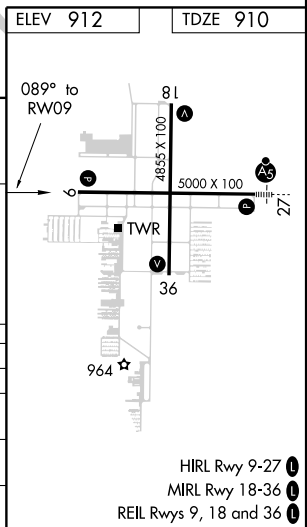
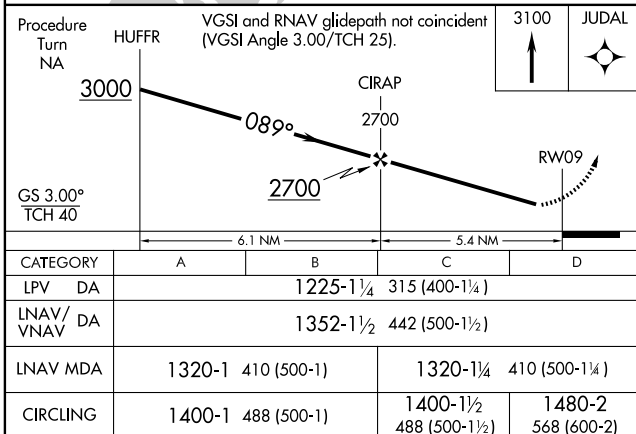
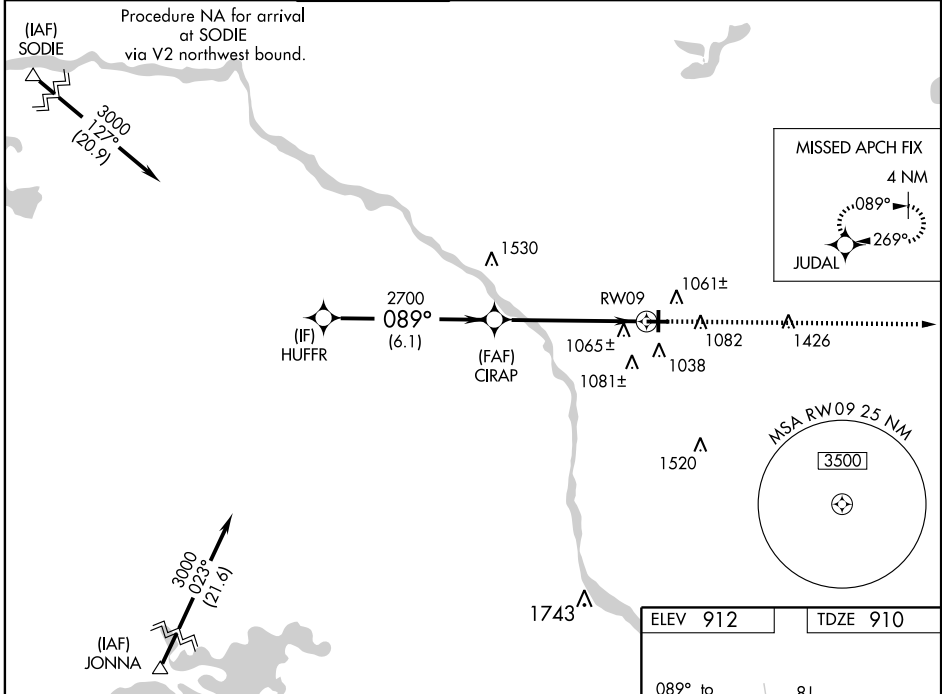
MINNEAPOLIS/  
ANOKA COUNTY-BLAINE AIRPORT (JANES FIELD) (A.N.E.)

# RNAV (GPS) RWY 9

**⚠** Baro-VNAV NA when using Crystal altimeter setting. For uncompensated Baro-VNAV systems, LNAV/VNAV NA below -16°C (4°F) or above 47°C (116°F). DME/DME RNP-0.3 NA. Visibility reduction by helicopters NA. When local altimeter setting not received, use Crystal altimeter setting and increase all DA 25 feet, all MDA 40 feet, increase LNAV/VNAV all Cats visibility ¼ mile, LNAV Cat D ½ mile.

**⚠** MISSED APPROACH: Climb to 3100 direct JUDAL and hold.

ATIS <b>120.625</b>	MINNEAPOLIS APP CON <b>126.5</b>	ANOKA TOWER* <b>132.4</b> (CTAF) <b>0</b>	GND CON <b>121.85</b>	CLNC DEL <b>121.3</b>	MINNEAPOLIS CLNC DEL <b>121.85</b> (When tower closed)	UNICOM <b>122.95</b>
------------------------	-------------------------------------	--	--------------------------	--------------------------	--	-------------------------



NC-1, 31 MAY 2012 to 28 JUN 2012

NC-1, 31 MAY 2012 to 28 JUN 2012

# RNAV (GPS) RWY 9

MINNEAPOLIS, MINNESOTA

AL-5202 (FAA)

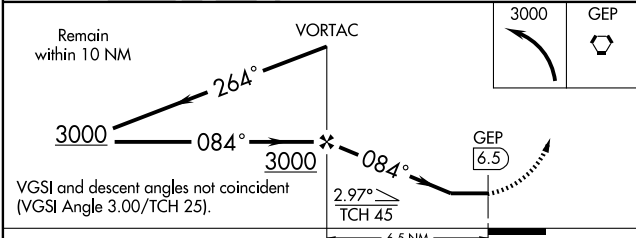
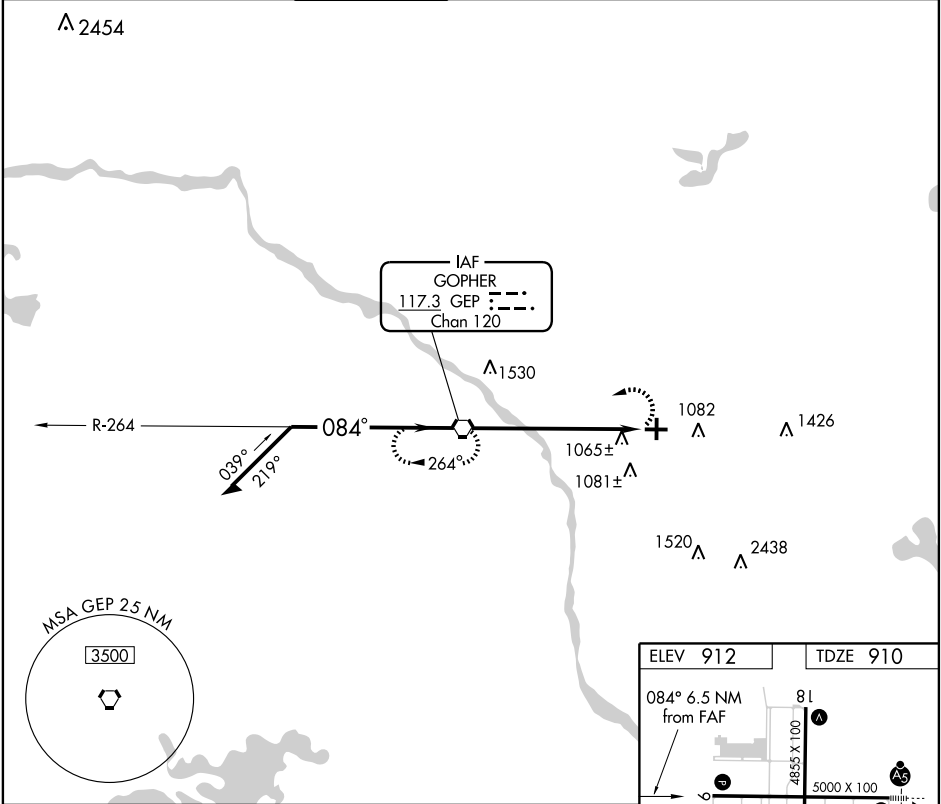
VORTAC GEP <b>117.3</b> Chan 120	APP CRS <b>084°</b>	Rwy Idg TDZE Apt Elev	<b>5000</b> <b>910</b> <b>912</b>
--	------------------------	-----------------------------	---

MINNEAPOLIS/  
ANOKA COUNTY-BLAINE AIRPORT (JANES FIELD) (A.N.E) **VOR RWY 9**

▼ Visibility reduction by helicopters NA.  
▲ When local altimeter setting not received, use Crystal altimeter setting and increase all MDA 40 feet and S-9 Cat C visibility ¼ mile.

MISSED APPROACH: Climbing left turn to 3000 direct to GEP VORTAC and hold.

ATIS <b>120.625</b>	MINNEAPOLIS APP CON <b>126.5</b>	ANOKA TOWER* <b>132.4</b> (CTAF) <b>0</b>	GND CON <b>121.85</b>	CLNC DEL <b>121.3</b>	MINNEAPOLIS CLNC DEL <b>121.85</b> (When tower closed)	UNICOM <b>122.95</b>
------------------------	-------------------------------------	--	--------------------------	--------------------------	--	-------------------------



ELEV 912	TDZE 910
----------	----------

Diagram details: 084° 6.5 NM from FAF, 81, 4855 X 100, 5000 X 100, 27, 964, HIRL Rwy 9-27, MIRL Rwy 18-36, REIL Rws 9, 18 and 36.

FAF to MAP 6.5 NM					
Knots	60	90	120	150	180
Min:Sec	6:30	4:20	3:15	2:36	2:10

CATEGORY	A	B	C	D
S-9	1380-1 470 (500-1)		1380-1½ 470 (500-1½)	1380-1½ 470 (500-1½)
CIRCLING	1400-1 488 (500-1)		1400-1½ 488 (500-1½)	1480-2 568 (600-2)

MINNEAPOLIS, MINNESOTA  
Amdt 12 12040

MINNEAPOLIS/ANOKA COUNTY-BLAINE AIRPORT (JANES FIELD) (A.N.E)  
45°09'N-93°13'W

**VOR RWY 9**

NC-1, 31 MAY 2012 to 28 JUN 2012

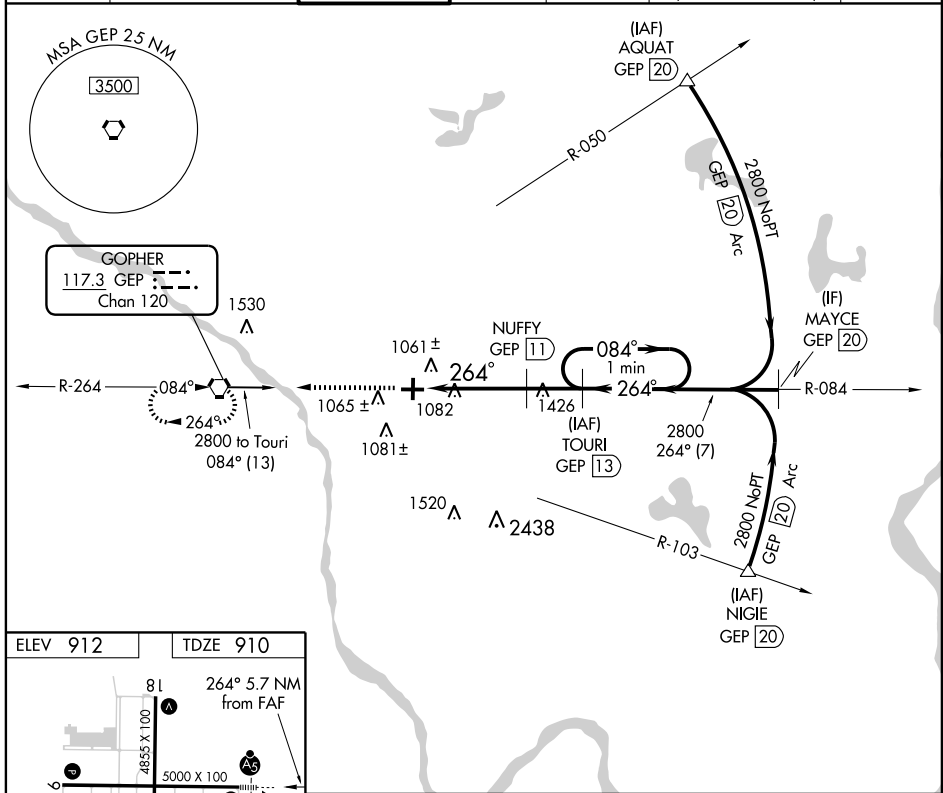
NC-1, 31 MAY 2012 to 28 JUN 2012

VORTAC GEP <b>117.3</b>	APP CRS <b>264°</b>	Rwy ldg <b>5000</b>
Chan <b>120</b>	TDZE <b>910</b>	Apt Elev <b>912</b>

MINNEAPOLIS/  
ANOKA COUNTY-BLAINE AIRPORT (JANES FIELD) (A.N.E.)

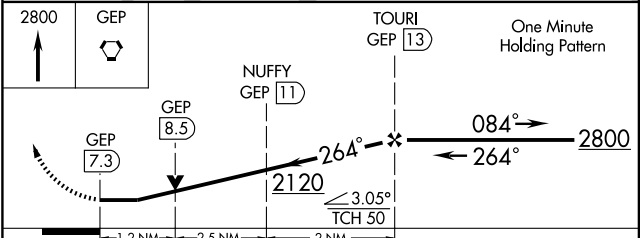
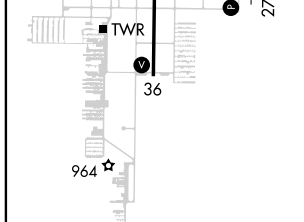
# VOR/DME RWY 27

<p>▼ DME required. ▲ When local altimeter setting not received, use Crystal altimeter setting and increase all MDA 40 feet. VDP NA when using Crystal altimeter setting.</p>		<p>MALSR AS</p>		<p>MISSED APPROACH: Climb to 2800 direct GEP VORTAC and hold.</p>		
ATIS <b>120.625</b>	MINNEAPOLIS APP CON <b>126.5</b>	ANOKA TOWER* <b>132.4</b> (CTAF) <b>1</b>	GND CON <b>121.85</b>	CLNC DEL <b>121.3</b>	MINNEAPOLIS CLNC DEL <b>121.85</b> (When tower closed)	UNICOM <b>122.95</b>



NC-1, 31 MAY 2012 to 28 JUN 2012

NC-1, 31 MAY 2012 to 28 JUN 2012



ELEV 912	TDZE 910
81	264° 5.7 NM from FAF
4855 X 100	5000 X 100
TWR	36
964	
HIRL Rwy 9-27	
MIRL Rwy 18-36	
REIL Rws 9, 18 and 36	
FAF to MAP 5.7 NM	
Knots	60 90 120 150 180
Min:Sec	5:42 3:48 2:51 2:17 1:54

CATEGORY	A	B	C	D
S-27	1340-1/2	430 (500-1/2)	1340-3/4 430 (500-1)	1340-1 430 (500-1)
CIRCLING	1400-1	488 (500-1)	1400-1/2 488 (500-1/2)	1480-2 568 (600-2)

# VOR/DME RWY 27