


LOC I-ANB <b>111.5</b>	APP CRS <b>049°</b>	Rwy Idg <b>7000</b> THRE <b>595</b> Apt Elev <b>612</b>
---------------------------	------------------------	--

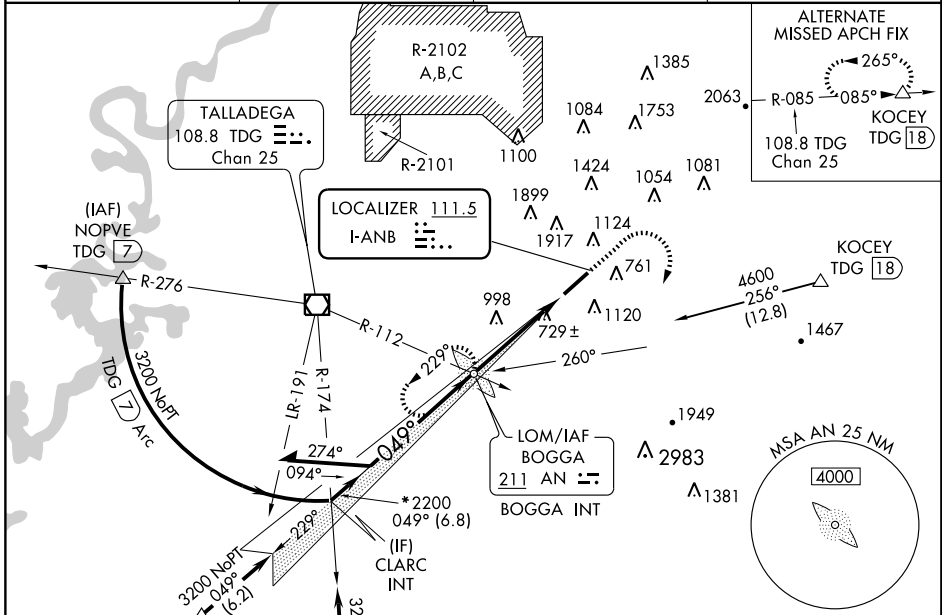
# ILS or LOC RWY 5

ANNISTON RGNL (ANB)

**ADF Required.** When local altimeter setting not received, use Gadsden altimeter setting and increase all DA to 975 and all MDA 80 feet, increase S-ILS 5 all Cats, S-LOC 5 Cat C and D and Circling Cat A, C, and D visibility 1/4 mile. For inop MALSR increase S-ILS 5 all Cats visibility to 1. For inop MALSR when using Gadsden altimeter setting, increase S-ILS 5 all Cats visibility to 1/4. Circling NA north of Rwy 5-23.

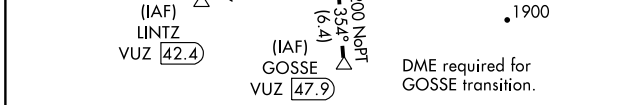
**MALSR**  MISSED APPROACH: Climb to 1600 then climbing right turn to 4000 via heading 110° then via AN LOM 260° course to BOGGA LOM/INT and hold.

ASOS <b>119.675</b>	BIRMINGHAM APP CON <b>125.45 381.5</b>	CTAF <b>123.6</b>	UNICOM <b>123.0</b>
------------------------	---	----------------------	------------------------

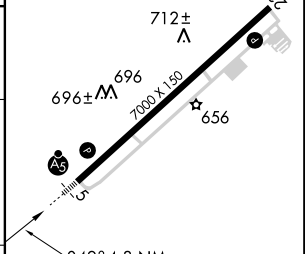
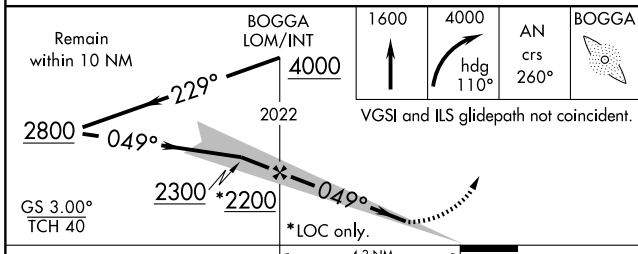


SE-4, 31 MAY 2012 to 28 JUN 2012

SE-4, 31 MAY 2012 to 28 JUN 2012



ELEV 612	THRE 595
----------	----------



CATEGORY	A	B	C	D
S-ILS 5	909-1/2 314 (300-1/2)			
S-LOC 5	1120-1/2	525 (600-1/2)	1120-1	525 (600-1)
CIRCLING	1480-1 868 (900-1)	1480-1 1/4 868 (900-1 1/4)	1480-2 1/2 868 (900-2 1/2)	1480-2 3/4 868 (900-2 3/4)

FAF to MAP 4.3 NM					
Knots	60	90	120	150	180
Min:Sec	4:18	2:52	2:09	1:43	1:26




WAAS CH <b>78106</b> <b>W05A</b>	APP CRS <b>049°</b>	Rwy Idg THRE Apt Elev <b>7000</b> <b>595</b> <b>612</b>
--	------------------------	--

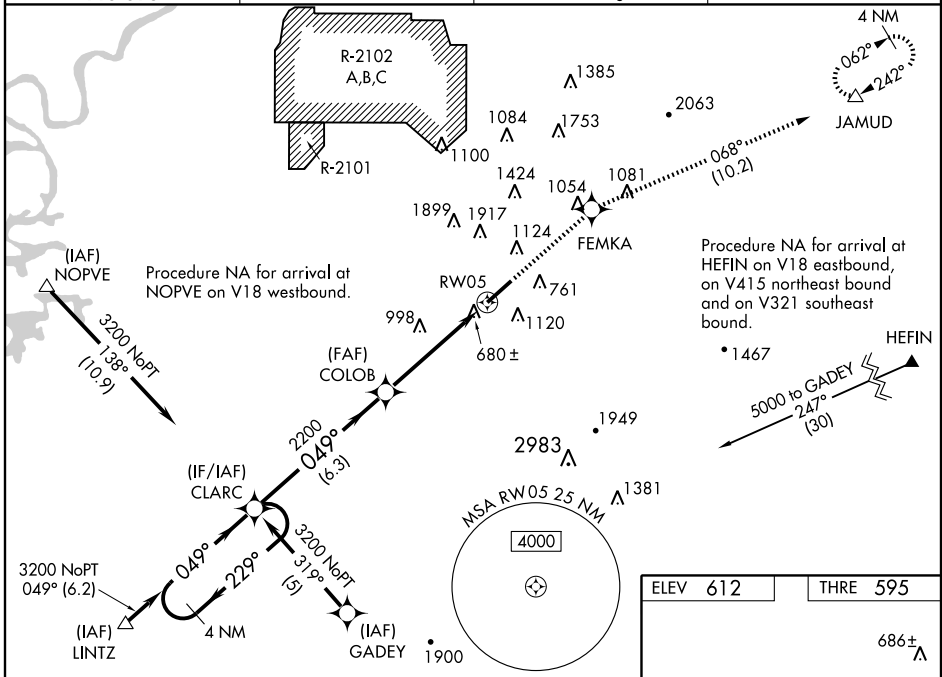
# RNAV (GPS) RWY 5

ANNISTON RGNL (ANB)

**▽** DME/DME RNP-0.3 NA. When local altimeter setting not received, use Gadsden altimeter setting and increase all DA 66 feet and all MDA 80 feet and LPV \*\* all Cats, LPV all Cats, LNAV Cats C and D and Circling Cats A, C, and D visibility 1/4 mile. For inop MALSRS increase LPV \*\* all Cats visibility to 1/4, LPV all Cats to 1/4. For inop MALSRS when using Gadsden altimeter setting, increase LPV \*\* all Cats visibility to 1/2 and LPV all Cats visibility to 2. VDP NA with Gadsden altimeter setting. \*\* Missed approach requires minimum climb of 225 feet per NM to 2700. Circling NA north of Rwy 5-23.

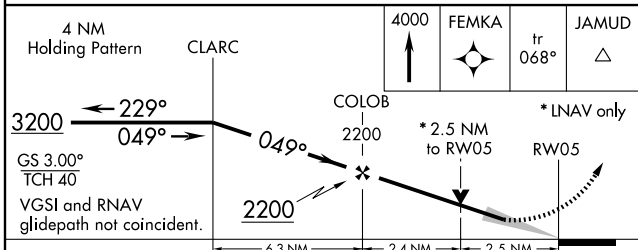
**MALSRS**  
  
**MISSED APPROACH:**  
 Climb to 4000 direct FEMKA and on track 068° to JAMUD and hold.

ASOS <b>119.675</b>	BIRMINGHAM APP CON <b>125.45 381.5</b>	CTAF <b>123.60</b>	UNICOM <b>123.0</b>
------------------------	---	-----------------------	------------------------

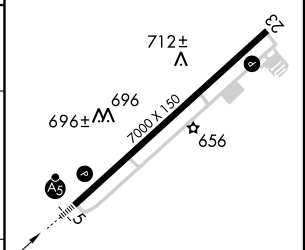


SE-4, 31 MAY 2012 to 28 JUN 2012

SE-4, 31 MAY 2012 to 28 JUN 2012



ELEV 612	THRE 595
----------	----------



CATEGORY	A	B	C	D
LPV DA		** 918-3/4 323 (400-3/4)		
LPV DA		1113-1 1/4 518 (600-1 1/4)		
LNAV MDA	1420-1/2 825 (900-1/2)	1420-3/4 825 (900-3/4)	1420-17/8	825 (900-17/8)
CIRCLING	1480-1 868 (900-1)	1480-1 1/4 868 (900-1 1/4)	1480-2 1/2 868 (900-2 1/2)	1480-2 3/4 868 (900-2 3/4)

REIL Rwy 23 **0**  
 HIRL Rwy 5-23 **0**

APP CRS <b>244°</b>	Rwy Idg THRE Apt Elev <b>612</b>	<b>7000</b> <b>612</b> <b>612</b>
------------------------	---	---

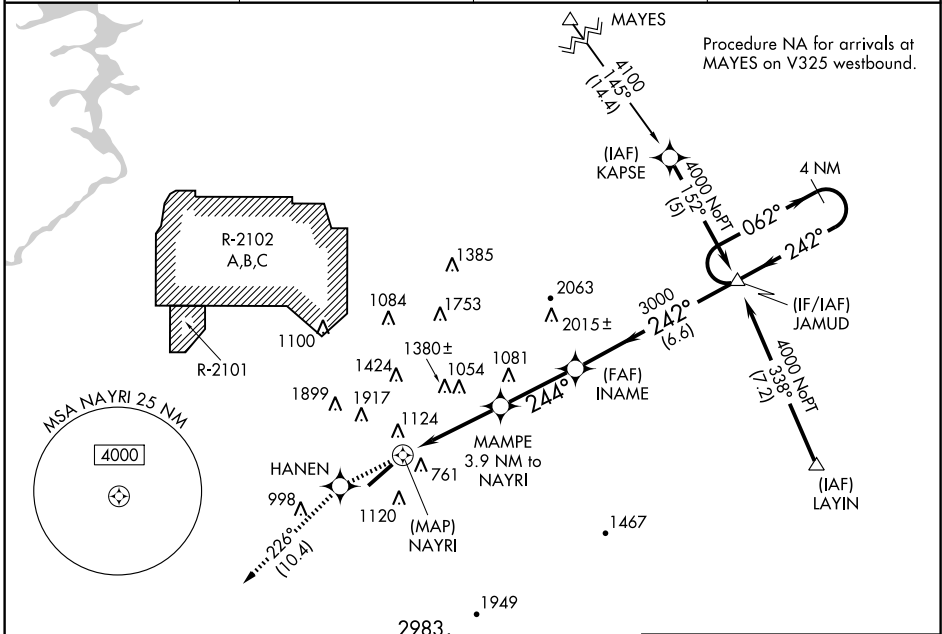
# RNAV (GPS) Y RWY 23

ANNISTON RGNL (ANB)

**⚠** DME/DME RNP-0.3 NA. Visibility reduction by helicopters NA.  
**⚠** When local altimeter setting not received, use Gadsden altimeter setting and increase all MDA 80 feet.  
 Circling NA north of Rwy 5-23.

MISSED APPROACH: Climb to 3200 direct HANEN and on track 226° to CLARC and hold.

ASOS <b>119.675</b>	BIRMINGHAM APP CON <b>125.45 381.5</b>	CTAF <b>123.6</b>	UNICOM <b>123.0</b>
------------------------	---	----------------------	------------------------



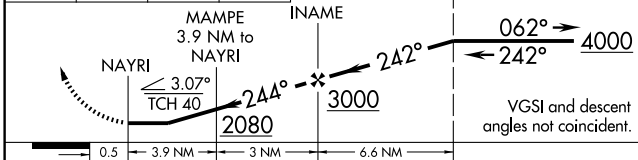
SE-4, 31 MAY 2012 to 28 JUN 2012

SE-4, 31 MAY 2012 to 28 JUN 2012

ELEV 612	THRE 612
----------	----------



3200	HANEN	tr 226°	CLARC	JAMUD	4 NM Holding Pattern
------	-------	---------	-------	-------	----------------------



CATEGORY	A	B	C	D
RNAV MDA	1700-1¼ 1088 (1100-1¼)	1700-1½ 1088 (1100-1½)	1700-3	1088 (1100-3)
CIRCLING	1700-1¼ 1088 (1100-1¼)	1700-1½ 1088 (1100-1½)	1700-3	1088 (1100-3)

