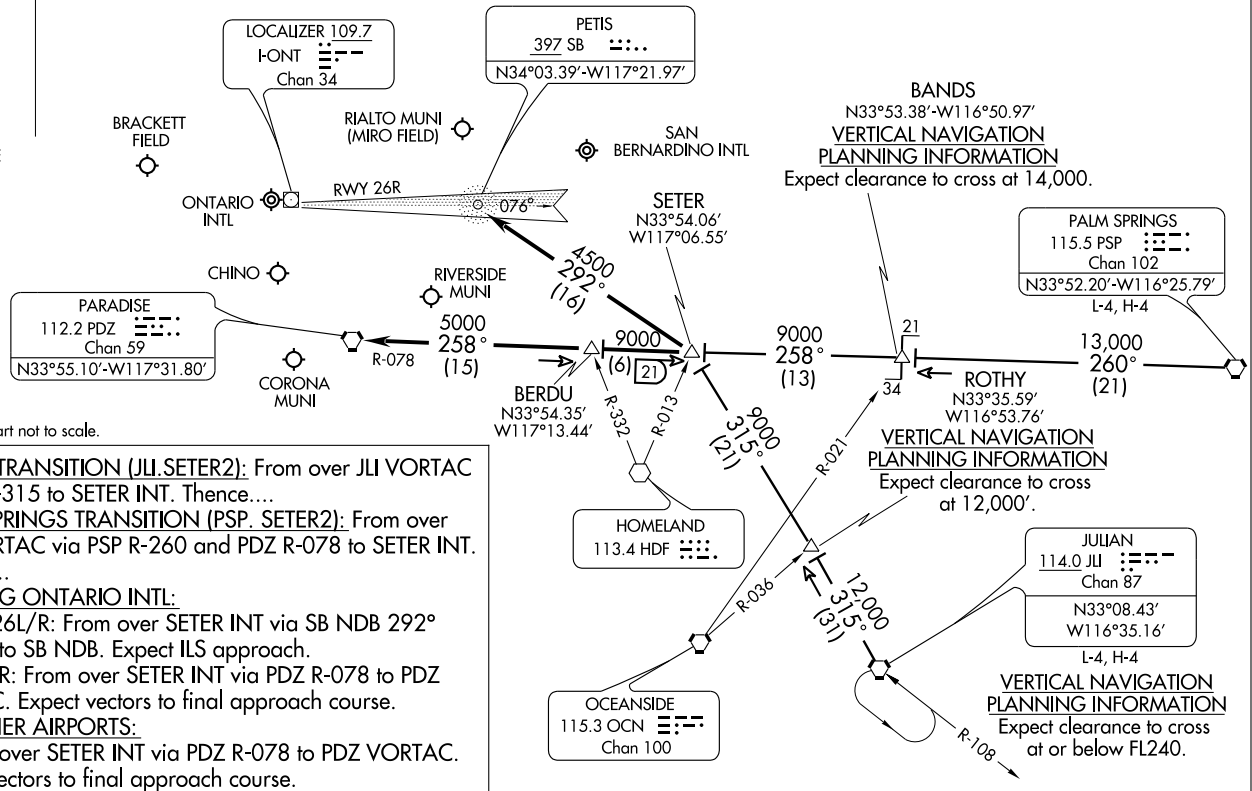
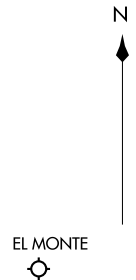


SOCAL APP CON  
119.65 379.25  
BRACKETT ATIS 124.4  
CHINO ATIS 125.85  
EL MONTE ATIS 118.75  
ONTARIO ATIS 124.25  
RIVERSIDE ATIS 128.8



NOTE: Chart not to scale.

**JULIAN TRANSITION (JLI,SETER2):** From over JLI VORTAC via JLI R-315 to SETER INT. Thence....  
**PALM SPRINGS TRANSITION (PSP, SETER2):** From over PSP VORTAC via PSP R-260 and PDZ R-078 to SETER INT. Thence....  
**LANDING ONTARIO INTL:**  
 ....Rwy 26L/R: From over SETER INT via SB NDB 292° bearing to SB NDB. Expect ILS approach.  
 Rwy 8L/R: From over SETER INT via PDZ R-078 to PDZ VORTAC. Expect vectors to final approach course.  
**ALL OTHER AIRPORTS:**  
 ....From over SETER INT via PDZ R-078 to PDZ VORTAC. Expect vectors to final approach course.

ST-965 (FAA)

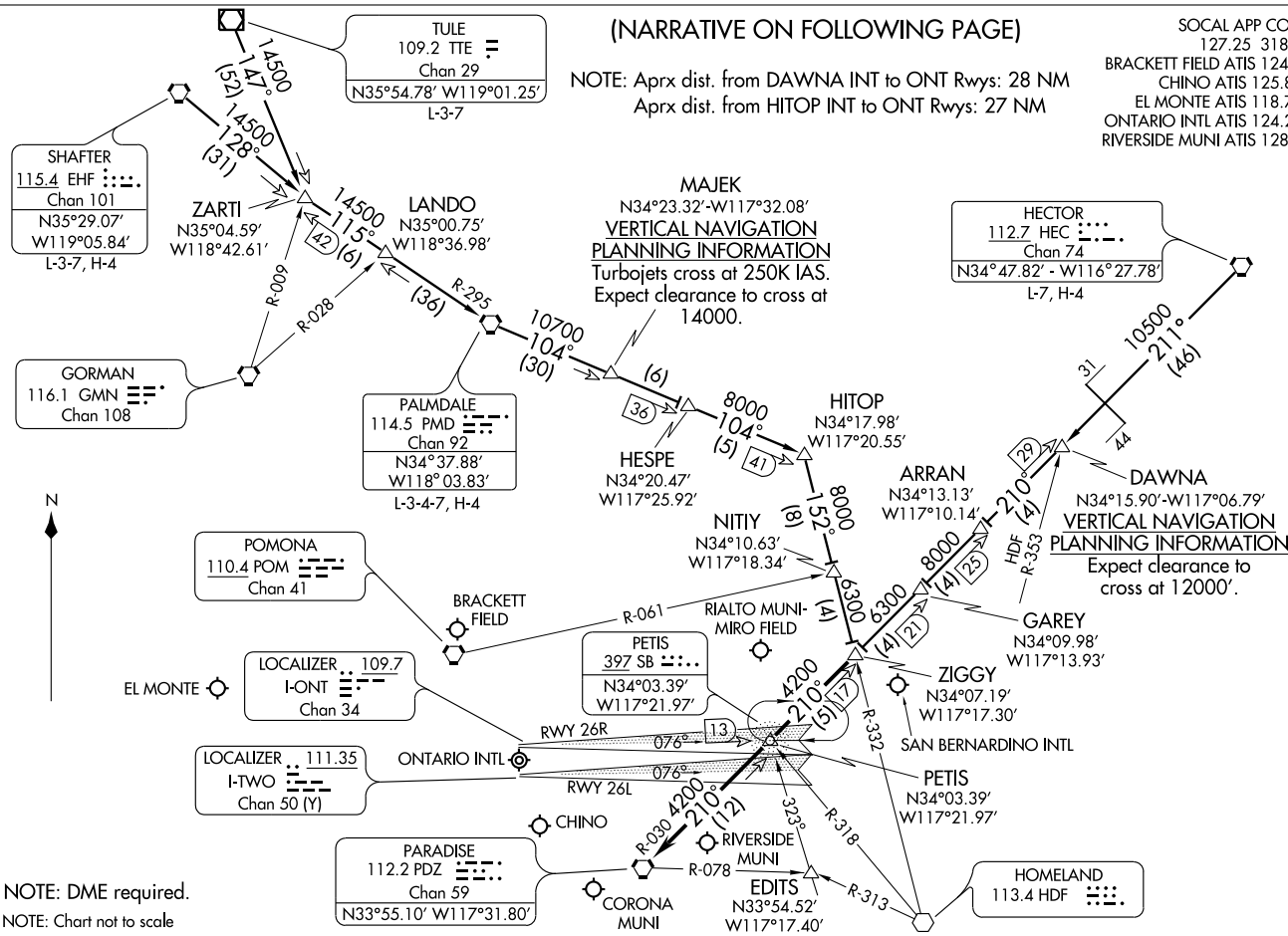
ONTARIO, CALIFORNIA

ONTARIO, CALIFORNIA

(NARRATIVE ON FOLLOWING PAGE)

NOTE: Aprx dist. from DAWNA INT to ONT RwyS: 28 NM  
Aprx dist. from HITOP INT to ONT RwyS: 27 NM

SOCAL APP CON  
127.25 318.2  
BRACKETT FIELD ATIS 124.4  
CHINO ATIS 125.85  
EL MONTE ATIS 118.75  
ONTARIO INTL ATIS 124.25  
RIVERSIDE MUNI ATIS 128.8



NOTE: DME required.  
NOTE: Chart not to scale

## ARRIVAL ROUTE DESCRIPTION

HECTOR TRANSITION (HEC.ZIGGY4): From over HEC VORTAC via HEC R-211 and PDZ R-030 to ZIGGY INT. Thence . . . .

PALMDALE TRANSITION (PMD.ZIGGY4): From over PMD VORTAC via PMD R-104 to HITOP INT, then via HDF R-332 to ZIGGY INT. Thence . . . .

SHAFTER TRANSITION (EHF.ZIGGY4): From over EHF VORTAC via EHF R-128 and PMD R-295 to PMD VORTAC, then via PMD R-104 to HITOP INT, then via HDF R-332 to ZIGGY INT. Thence . . . .

TULE TRANSITION (TTE.ZIGGY4): From over TTE VOR/DME via TTE R-147 and PMD R-295 to PMD VORTAC, then via PMD R-104 to HITOP INT, then via HDF R-332 to ZIGGY INT. Thence . . . .

### LANDING ONTARIO INTL:

. . . . RWY 8L/R: From over ZIGGY INT via PDZ R-030 to PDZ VORTAC; expect radar vectors to final approach course.

. . . . RWY 26 L/R: From over ZIGGY INT via direct PETIS NDB or PDZ R-030 to PETIS INT; expect radar vectors for ILS approach.

### ALL OTHER AIRPORTS:

. . . . From over ZIGGY INT via PDZ R-030 to PDZ VORTAC; expect radar vectors to final approach course.

LOST COMMUNICATIONS: For Rialto, California, NDB-A approach, proceed from PDZ VORTAC via PDZ R-078 to EDITS INT, maintain 4200'.

SW-3, 31 MAY 2012 to 28 JUN 2012

SW-3, 31 MAY 2012 to 28 JUN 2012