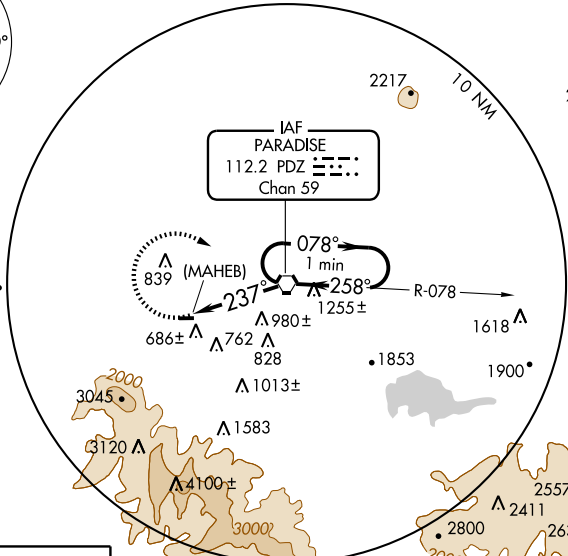
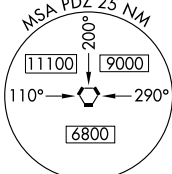


VOR or GPS-A
CORONA MUNI (AJO)

VORTAC PDZ 112.2 Chan 59	APP CRS 237°	Rwy Idg TDZE Apt Elev	N/A N/A 533
---------------------------------------	------------------------	-----------------------------	--

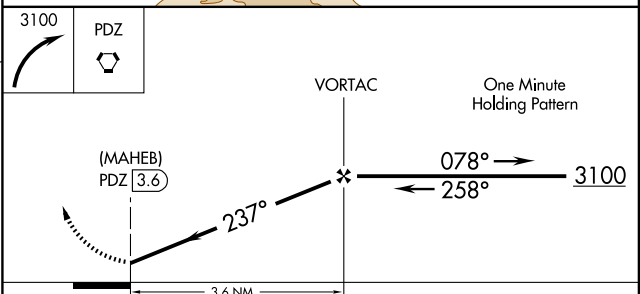
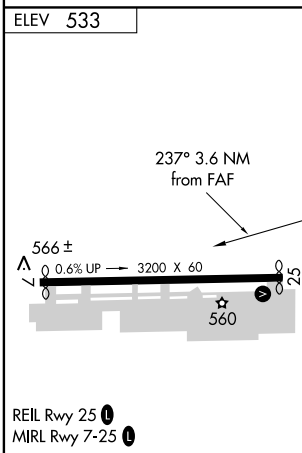
▽ When local altimeter setting not received, use Ontario
▲ NA Intl altimeter setting and increase all MDA 80 feet. MISSED APPROACH: Climbing right turn to 3100 direct PDZ VORTAC and hold, continue climb in hold to 3100.

ASOS 132.175	SOCAL APP CON 135.4 377.125	UNICOM 122.7 (CTAF) 0
------------------------	---------------------------------------	--



SW-3, 31 MAY 2012 to 28 JUN 2012

SW-3, 31 MAY 2012 to 28 JUN 2012



FAF to MAP 3.6 NM		CATEGORY	A	B	C	D
Knots	60 90 120 150 180	CIRCLING	1660-1¼ 1127 (1200-1¼)	1660-1½ 1127 (1200-1½)	NA	
Min:Sec	3:36 2:24 1:48 1:26 1:12					

TAKE-OFF MINIMUMS AND (OBSTACLE) DEPARTURE PROCEDURES

12152

INSTRUMENT APPROACH PROCEDURE CHARTS

IFR TAKE-OFF MINIMUMS AND (OBSTACLE) DEPARTURE PROCEDURES

Civil Airports and Selected Military Airports

ALL USERS: Airports that have Departure Procedures (DPs) designed specifically to assist pilots in avoiding obstacles during the climb to the minimum enroute altitude, and/or airports that have civil IFR take-off minimums other than standard, are listed below. Take-off Minimums and Departure Procedures apply to all runways unless otherwise specified. Altitudes, unless otherwise indicated, are minimum altitudes in MSL.

DPs specifically designed for obstacle avoidance are referred to as Obstacle Departure Procedures (ODPs) and are described below in text, or published separately as a graphic procedure. If the (Obstacle) DP is published as a graphic procedure, its name will be listed below, and it can be found in either this volume (civil), or the applicable military volume, as appropriate. Users will recognize graphic obstacle DPs by the term "(OBSTACLE)" included in the procedure title; e.g., TETON TWO (OBSTACLE). If not specifically assigned a departure procedure (i.e., ODP, SID, or radar vector) as part of an IFR clearance, an ODP may be required to be flown for obstacle clearance, even though not specifically stated in the IFR clearance. When doing so in this manner, ATC should be informed when the ODP being used contains a specified route to be flown, restrictions before turning, and/or altitude restrictions.

Graphic DPs designed by ATC to standardize traffic flows, ensure aircraft separation and enhance capacity are referred to as "Standard Instrument Departures (SIDs)". SIDs also provide obstacle clearance and are published under the appropriate airport section. ATC clearance must be received prior to flying a SID.

CIVIL USERS NOTE: Title 14 Code of Federal Regulations Part 91 prescribes standard take-off rules and establishes take-off minimums for certain operators as follows: (1) Aircraft having two engines or less - one statute mile. (2) Aircraft having more than two engines - one-half statute mile. These standard minima apply in the absence of any different minima listed below.

MILITARY USERS NOTE: Civil (nonstandard) take-off minima are published below. For military take-off minima, refer to appropriate service directives.

NAME TAKE-OFF MINIMUMS

APPLE VALLEY, CA

APPLE VALLEY

TAKE-OFF MINIMUMS: **Rwy 36**, 300-1 or std. with a min. climb gradient of 340' per NM until 5800.

Rwys 8,18,26, NA.

DEPARTURE PROCEDURE: Use EXCON ONE RNAV DEPARTURE. **Rwy 8,18,26**, NA.

AVALON, CA

CATALINA

DEPARTURE PROCEDURE: **Rwys 4,22**, climb straight ahead to 2300 then proceed on course.

BAKERSFIELD, CA

BAKERSFIELD MUNI

TAKE-OFF MINIMUMS: **Rwy 16**, 300-1 or std. with a min. climb of 230' per NM to 500. **Rwy 34**, 400-2 or std. with a min. climb of 400' per NM to 800.

DEPARTURE PROCEDURE: **Rwy 16**, turn right.

Rwy 34, turn left. **All aircraft** climb direct EHF VORTAC. Aircraft departing EHF R-120 CW R-360, climb on course, all others continue climb in EHF VORTAC holding pattern (NW, right turns, 144° inbound) to cross EHF at or above 4000, before proceeding on course.

NOTE: 120' powerlines on centerline, 2551' from departure end of runway 16.

NAME TAKE-OFF MINIMUMS

BAKERSFIELD, CA (CON'T)

MEADOWS FIELD

DEPARTURE PROCEDURE: **All aircraft** climbing right turn direct EHF VORTAC. Aircraft departing EHF R-180 CW R-350 climb on course. All others continue climb northwestbound via EHF R-324, then climbing left turn to cross EHF VORTAC at or above: EHF R-110 CW R-179 3000; EHF R-351 CW R-109 4000.

BIG BEAR CITY, CA

BIG BEAR CITY

TAKE-OFF MINIMUMS: **Rwys 8**, 1200-2 or std. with a min. climb of 282' per NM to 8000. **Rwy 26**, NA.

DEPARTURE PROCEDURE: Use OKACO RNAV DEPARTURE. **Rwy 26**, NA.

BLYTHE, CA

BLYTHE

TAKE-OFF MINIMUMS: **Rwy 26**, 700-2 or std. with a min. climb of 330' per NM to 1100.

DEPARTURE PROCEDURE: **Rwys 8,17,35**, turn right. **Rwy 26**, turn left, climb to 1500 via heading 180° and BLHR-120, then climbing left turn direct BLH VORTAC, MCA 2000.

12152

TAKE-OFF MINIMUMS AND (OBSTACLE) DEPARTURE PROCEDURES



TAKE-OFF MINIMUMS AND (OBSTACLE) DEPARTURE PROCEDURES



12152

BORREGO SPRINGS, CA

BORREGO VALLEY (L08)
AMDT 2 08101 (FAA)
DEPARTURE PROCEDURE: Use ZUNGU
DEPARTURE (RNAV).

BRAWLEY, CA

BRAWLEY MUNI
TAKE-OFF MINIMUMS: **Rwy 26**, NA.
DEPARTURE PROCEDURE: **Rwy 8**, turn right. Climb to 3000 via IPLR-009 to IPL VORTAC, then climb on course.

BURBANK, CA

BOB HOPE (BUR)
AMDT 5 11209 (FAA)
TAKE-OFF MINIMUMS: **Rwy 8**, std. w/min. climb of 410' per NM to 5000. **Rwy 15**, std. w/min. climb of 335' per NM to 5000. **Rwy 26**, std. w/min. climb of 325' per NM to 5000. **Rwy 33**, std. w/min. climb of 550' per NM to 5000' or 600-2 1/4 w/min. climb of 300' per NM to 5000.
DEPARTURE PROCEDURE: **Rwys 8, 15**, climbing right turn direct VNY VOR/DME. **Rwy 26**, climb direct VNY VOR/DME. **Rwy 33**, Climbing left turn direct VNY VOR/DME.
All aircraft continue climb in VNY holding pattern (SE, left turns, 295° inbound) to cross VNY VOR/DME at or above 5100, then westbound on V326 to GINNA or eastbound on V186 to DARTS.

NOTE: **Rwy 8**, multiple trees, poles, and buildings beginning 124' from DER, 42' right of centerline, up to 65' AGL/745' MSL. Multiple trees, buildings and poles beginning 278' from DER, 73' left of centerline, up to 56' AGL/746' MSL. **Rwy 15**, multiple trees, buildings, poles, and blast fence beginning 50' from DER, 2' right of centerline, up to 65' AGL/762' MSL. Multiple trees, buildings, poles, blast fence beginning 185' from DER, 53' left of centerline, up to 108' AGL/777' MSL. **Rwy 26**, multiple trees, poles, transmission towers, buildings, and roads, and terrain beginning 26' from DER, 4' right of centerline, up to 145' AGL/731' MSL. Multiple trees, poles, transmission towers, railroad, and buildings beginning 302' from DER, 437' left of centerline, up to 117' AGL/846' MSL. **Rwy 33**, multiple trees, poles, terrain, buildings, road beginning 33' from DER, 30' right of centerline, up to 100' AGL/1333' MSL. Multiple trees, poles, buildings, antenna, railroad, and blast fence beginning 97' from DER, 11' left of centerline, up to 50' AGL/878' MSL.

CALIFORNIA CITY, CA

CALIFORNIA CITY MUNI
DEPARTURE PROCEDURE: Use CALIFORNIA CITY
(RNAV) DEPARTURE.

CALIPATRIA, CA

CLIFF HATFIELD MEMORIAL
DEPARTURE PROCEDURE: **Rwy 8**, climb runway heading to 400', then climbing right turn to 3000 via heading 200° and IPL R-336 to IPL VORTAC. **Rwy 26**, climb runway heading to 400', then climbing left turn to 3000 via IPL R-336 to IPL VORTAC.

CAMARILLO, CA

CAMARILLO
TAKE-OFF MINIMUMS: **Rwy 8**, 1100-2 or std. with a min. climb of 250' per NM to 1500.
DEPARTURE PROCEDURE: **Rwy 8**, climb to 2500 via CMA R-061. **Rwy 26**, climbing right turn to 2500 via CMA R-265. All aircraft climbing left turn direct CMA VOR/DME. Continue climb on course to assigned altitude.

CAMP PENDLETON MCAS (MUNN FIELD) (KNFG)

OCEANSIDE, CA09015
RWY 3: Diverse departures not authorized.
RWY 21: Cross DER 35' AGL/96' MSL or above.
Diverse departure authorized between 199 to 226° CW – Civil standard with minimum obstacle climb of 500 ft/ NM to 1000'; Military standard with minimum obstacle climb of 430 ft/NM to 800'. 800-2 ceiling and vis authorized in lieu of minimum climb rate.
TAKE-OFF OBSTACLES: **RWY 3**: Multiple trees up to 101' AGL/165' MSL, beginning 2180' from DER, 490' to 700' right of centerline. Tree 66' AGL/141' MSL, 2209' from DER, 207' left of centerline. Tree 101' AGL/164' MSL, 2286' from DER, 506' right of centerline. Antenna 276' MSL, 4525' from DER, 1233' left of centerline. Terrain 739' MSL, 4.02 NM from DER, 3721' left of centerline. **RWY 21**: Terrain 219' MSL, 3790' from DER, 815' left of centerline. Terrain 399' MSL, 5598' from DER, 1853' left of centerline. Terrain 530' MSL, 1.5 NM from DER, 943' right of centerline. Antennas and Tower up to 50' AGL/623' MSL, beginning 1.5 NM from DER, 2390' to 2745' right of centerline. Multiple Pylons and Terrain up to 50' AGL/606' MSL, beginning 1.6 NM from DER, 1022' to 1605' right of centerline. TACAN 70' AGL/560' MSL, 1.75 NM from DER, 90' right of centerline. Trees 43' AGL/104' MSL, 552' from DER, 182' right of centerline. Trees 63' AGL/124' MSL, 836' from DER, 714' left of centerline. Trees 40' AGL/101' MSL, 502' from DER, 273' left of centerline.

CARLSBAD, CA

MC CLELLAN-PALOMAR
TAKE-OFF MINIMUMS: **Rwy 6**, 1400-2 or std. with a min. climb of 260' per NM to 2100.
DEPARTURE PROCEDURE: **Rwy 6**, climbing left turn to 3100 heading 245°. **Rwy 24**, climb runway heading to 2800. All aircraft climb on course.

CHINA LAKE NAWA (ARMITAGE FLD)(KNID)

RIDGECREST, CA 10266
Diverse departures not authorized, use published departure.

31 MAY 2012 to 28 JUN 2012

31 MAY 2012 to 28 JUN 2012

12152



TAKE-OFF MINIMUMS AND (OBSTACLE) DEPARTURE PROCEDURES



TAKE-OFF MINIMUMS AND (OBSTACLE) DEPARTURE PROCEDURES

12152

CHINO, CA

CHINO

TAKE-OFF MINIMUMS: **Rwy 3**, std. with a min. climb of 270' per NM to 4800. **Rwys 8L/R**, std. with a min. climb of 270' per NM to 4800. **Rwy 21**, Cat A/B std. with a min. climb of 290' per NM to 4800, Cat C/D std. with a min. climb of 400' per NM 4800. **Rwys 26L/R**, Cat A/B std. with a min. climb of 270' per NM to 4800, Cat C/D std. with a min. climb of 410' per NM to 4800.

DEPARTURE PROCEDURE: **Rwys 3, 8L/R**, climbing right turn direct PDZ VORTAC. **Rwys 21, 26L/R**, climbing left turn direct PDZ VORTAC. **All aircraft** climb in PDZ VORTAC holding pattern (Hold E, right turns, 258° inbound) to the appropriate MEA.

NOTE: 108' AGL trees 1200' from departure end of runway 3, 600' left of centerline.

CORONA, CA

CORONA MUNI

TAKE-OFF MINIMUMS: **Rwy 7**, 1000-2 or std. with a min. climb of 310' per NM to 1700. **Rwy 25**, 600-2 or std. with a min. climb of 280' per NM to 1200.

DEPARTURE PROCEDURE: **Rwy 7**, climbing left turn. **Rwy 25**, climbing right turn. **All aircraft** continue climb direct to PDZ VORTAC. Aircraft departing PDZ R-091 CW R-140 and R-231 CW R-280 climb on course. All others continue climb in PDZ VORTAC holding pattern (Hold NE, right turns, 210° inbound) to cross PDZ VORTAC at or above: R-141 CW R-230 4000, R-281 CW R-090 6700.

DAGGETT, CA

BARSTOW-DAGGETT (DAG)

AMDT 3 10210 (FAA)

DEPARTURE PROCEDURE: Use DAGGETT DEPARTURE.

DELANO, CA

DELANO MUNI (DLO)

AMDT 3A 08129 (FAA)

TAKE-OFF MINIMUMS: **Rwy 32**, 400-1 or std. with a min. climb rate of 390' per NM to 400.

DEPARTURE PROCEDURE: **Rwy 14**, Climb via heading 140° and EHF VORTAC R-324 to 3000 before proceeding on course. **Rwy 32**, climb via heading 320° and EHF VORTAC R-324 to 3000 before proceeding on course.

NOTE: 65' AGL tree 600' from departure end of runway, 500' left of centerline runway 14.

EDWARDS AF AUX NORTH BASE (9L2)

EDWARDS, CA

Rwy 6-24, climb on course, cross 15 NM from ARP at or above 4500.

EDWARDS AFB (KEDW)

EDWARDS, CA 12012

Rwys 4L/R, Radar Required, Climb 340 ft/NM to 5500, track inbound on EDW R-223 to EDW VORTAC, then out EDW R-043. Climb as instructed, expect radar vectors after passing 4500 or climb on course, cross 15 NM from ARP at or above 4500.

Rwys 22L/R, Radar and DME Required. CAT ABC track outbound EDW R-223. At 12 DME turn right heading 020°; intercept EDW R-247 to EDW VORTAC. Climb as instructed, expect radar vectors after passing 4500 or climb on course, cross 15 NM from ARP at or above 4500. CAT DE track outbound EDW R-223. At 12 DME turn right, intercept EDW R-247 to EDW VORTAC. Climb as instructed, expect radar vectors after passing 4500 or climb on course, cross 15 NM from ARP at or above 4500.

EL CENTRO NAF (KNJK)

EL CENTRO, CA 09127

Diverse Departures not authorized.

DEPARTURE PROCEDURE: **All Rwys**, use published departure procedure or if ceiling and visibility is below 2100-2½, make climbing turn direct IPL VORTAC within 3.6 DME of NJK TACAN and expect radar vectors to join assigned route. Expect filed altitude 10 minutes after departure. Cross IPL VORTAC at or below 7000.

EL MONTE, CA

EL MONTE

TAKE-OFF MINIMUMS: **Rwy 1**, 600-1 or std. with a min. climb of 280' per NM to 1000. **Rwy 19**, 1200-2 or std. with min. climb of 230' per NM to 1900.

DEPARTURE PROCEDURE: **Rwy 1**, climbing right turn. **Rwy 19**, climb runway heading to 800 then climbing left turn. **All aircraft** intercept PDZ R-278 to PDZ VORTAC. Aircraft departing PDZ R-091 CW R-280 climb on course. All others continue climb in PDZ holding pattern (NE, right turns, 210° inbound) to cross PDZ VORTAC at or above: R-281 CW R-090, 6700.

FALLBROOK, CA

FALLBROOK COMMUNITY AIRPARK

TAKE-OFF MINIMUMS: **Rwy 36**, CAT A,B, 700-2 or std. with a min. climb of 340' per NM to 5000.

DEPARTURE PROCEDURE: **Rwy 18**, climb runway heading to 1200, then climbing left turn via heading 160° to join V208-458. Aircraft westbound proceed on course. Aircraft eastbound V208-458 proceed to VISTA Int and climb in holding pattern (E, left turns, 263° inbound) to 5000 before proceeding on course. **Rwy 36**, climb runway heading to 1500, then climbing right turn to intercept OCN VORTAC R-027 to TANNR Int before proceeding on course.

31 MAY 2012 to 28 JUN 2012

31 MAY 2012 to 28 JUN 2012

12152

TAKE-OFF MINIMUMS AND (OBSTACLE) DEPARTURE PROCEDURES

TAKE-OFF MINIMUMS AND (OBSTACLE) DEPARTURE PROCEDURES

12152

FULLERTON, CA

FULLERTON MUNI (FUL)
AMDT 5 12124 (FAA)

TAKE-OFF MINIMUMS: **Rwy 6**, std. w/min. climb of 280' per NM to 600.

DEPARTURE PROCEDURE: **Rwy 6**, climbing right turn to 2300 direct SLI VORTAC, thence...

Rwy 24, climbing left turn to 2300 direct SLI VORTAC, thence...

... Climb in holding pattern (hold South, left turns, 351° inbound) until at or above MEA for direction of flight before proceeding course.

NOTE: **Rwy 6**, windsock 58' from DER, 189' right of centerline, 12' AGL/109' MSL. Obstruction light on pole 109' from DER, 116' left of centerline, 23' AGL/118' MSL. Multiple poles beginning 115' from DER, left and right of centerline, up to 40' AGL/198' MSL. Trains 221' from DER, left and right of centerline, up to 23' AGL/144' MSL. Light standard 486' from DER, 133' right of centerline, 20' AGL/123' MSL. Hopper on building 977' from DER, 468' left of centerline, 36' AGL/132' MSL. Obstruction light on building 1002' from DER, 31' right of centerline, 25' AGL/128' MSL. Light pole 1247' from DER, 143' left of centerline, 35' AGL/131' MSL. Tree 1462' from DER, 35' left of centerline, 75' AGL/168' MSL. Obstruction light on silo 1620' from DER, 317' right of centerline, 50' AGL/146' MSL. Building 3206' from DER, 820' right of centerline, 112' AGL/217' MSL. Obstruction light on building 3390' from DER, 913' right of centerline, 112' AGL/217' MSL. Tower 6093' from DER, 1936' left of centerline, 94' AGL/267' MSL. **Rwy 24**, vehicles on roadway 82' from DER, left and right of centerline, up to 15' AGL/114' MSL. Light standard 85' from DER, 260' right of centerline, 25' AGL/110' MSL. Light standard 217' from DER, 320' left of centerline, 104' AGL/122' MSL. Antenna on building 272' from DER, 227' left of centerline, 31' AGL/116' MSL. Trees beginning 352' from DER, 227' right of centerline, up to 60' AGL/155' MSL. Pole 395' from DER, 279' left of centerline, 35' AGL/123' MSL. Obstruction light on navaid 399' from DER, on centerline, 5' AGL/103' MSL. Poles beginning 1335' from DER, right and left of centerline, up to 25' AGL/129' MSL. Tree 1377' from DER, 159' left of centerline, 50' AGL/147' MSL.

HAWTHORNE, CA

JACK NORTHROP FIELD/HAWTHORNE MUNI

TAKE-OFF MINIMUMS: **Rwy 7**, 300-2 or std. with a min. climb of 363' per NM to 500. **Rwy 25**, 200-1 or std. w/a min. climb of 289' per NM to 300.

DEPARTURE PROCEDURE: **Rwy 7**, turn right, climb via heading 240°. **Rwy 25**, turn left, climb via heading 210°. All runways climb to 3000 via LAX R-170 to LIMBO Int.

NOTE: **Rwy 7**, multiple transmission towers beginning 5428' from departure end of runway, 205' left of centerline, up to 247' AGL/307' MSL. Antenna on building 1.1 NM from departure end of runway, 2020' left of centerline, 244' AGL/305' MSL. Multiple trees, poles, light poles and buildings beginning 130' from departure end of runway, 12' left of centerline, up to 266' AGL/327' MSL. Multiple trees, poles, signs and OL lights beginning 73' from departure end of runway, 90' right of centerline, up to 184' AGL/245' MSL. **Rwy 25**, OL light on tank 4471' from departure end of runway, 1311' left of centerline, 227' MSL. Multiple antennas on buildings, trees and poles 91' from departure end of runway, 64' left of centerline, up to 93' AGL/154' MSL. Multiple trees and poles beginning 309' from departure end of runway, 162' right of centerline, up to 84' AGL/149' MSL.

HEMET, CA

HEMET-RYAN (HMT)

AMDT 2 11293 (FAA)

TAKE-OFF MINIMUMS: **Rwy 5**, Std. w/min. climb of 440' per NM to 3500, or 1700-2½ for climb in visual conditions. Aircraft shall advise ATC prior to executing the VCOA. **Rwy 23**, std. w/min. climb of 452' per NM to 3000, or 1700-2½ for climb in visual conditions. Aircraft shall advise ATC prior to executing the VCOA.

DEPARTURE PROCEDURE: **Rwy 5**, climbing left turn to intercept HDF VOR R-084 to HDF VOR. Thence ... Or climb in visual conditions to cross Hemet-Ryan Airport westbound at or above 3100, then climb on HDF VOR R-093 to HDF VOR ... Thence ...

Rwy 23, climbing right turn to intercept HDF VOR R-108 to HDF VOR. Thence ...

Or climb in visual conditions to cross Hemet-Ryan Airport westbound at or above 3100, then climb on HDF VOR R-093 to HDF VOR ... Thence ...
... Climb in HDF VOR holding pattern (hold SE, right turns, 315° inbound), to cross HDF VOR at or above MEA/MCA for direction of flight.

NOTE: **Rwy 5**, vehicles on roadway, 199' from DER, left and right of centerline, up to 15' AGL/1534' MSL.

Rwy 23, vehicles on roadway, 1185' from DER, left and right of centerline, up to 17' AGL/1536' MSL. Trees beginning 1.2 NM from DER, 2389' right of centerline, up to 100' AGL/1979' MSL. Trees beginning 1.5 NM from DER, 1674' left of centerline, up to 100' AGL/1799' MSL.

31 MAY 2012 to 28 JUN 2012

31 MAY 2012 to 28 JUN 2012

12152

TAKE-OFF MINIMUMS AND (OBSTACLE) DEPARTURE PROCEDURES

TAKE-OFF MINIMUMS AND (OBSTACLE) DEPARTURE PROCEDURES

12152

IMPERIAL, CA

IMPERIAL COUNTY (IPL)

AMDT 2A 09239 (FAA)

TAKE-OFF MINIMUMS: **Rwy 14**, 400-2¼ or std. w/ min. climb of 220' per NM to 400, or alternatively, with standardard take-off minimums and a normal 200' per NM climb gradient, take-off must occur no later than 1800' prior to DER.

DEPARTURE PROCEDURE: **Rwys 8, 32**, turn right.

Rwy 14, climb runway heading. **Rwy 26**, turn left.

All aircraft climb direct IPL VORTAC.

NOTE: **Rwy 8**, multiple VASI beginning 687' from DER, 31' right of centerline, up to 5' AGL/-52' MSL. Antenna on building 1033' from DER, 703' left of centerline, 45' AGL/-12' MSL. Light on pole, 1984' from DER, 386' left of centerline, 55 ft AGL/-2' MSL. **Rwy 14**, building 1770' from DER, 38' left of centerline, 45' AGL/-11' MSL. Road 430' from DER, 291' left of centerline, 15' AGL/-41' MSL. Sign 1733' from DER, 35' left of centerline, 45' AGL/-11' MSL. Pole 1457' from DER, 393' right of centerline, 37' AGL/-19' MSL. **Rwy 26**, multiple obstruction lights on poles beginning 1509' from DER, 15' left of centerline, up to 60' AGL/3' MSL. Obstruction light on pole 1511' from DER, 459' right of centerline, 59' AGL/2' MSL. **Rwy 32**, obstruction light on tank, 823' from DER, 574' right of centerline 110' AGL/53' MSL. Numerous tanks beginning 3580' from DER, 296' right of centerline, up to 109' AGL/53' MSL. Tree 373' from DER, 387' right of centerline, 80' AGL/-24' MSL. Multiple lights beginning 243' from DER, 361' right of centerline, up to 28' AGL/-29' MSL. Pole 657' from DER, 370' left of centerline, 27' AGL/-30' MSL. Road 191' from DER, 237' left of centerline, 13' AGL/-44' MSL.

IMPERIAL BEACH NOLF (REAM FIELD) (KNRS)

IMPERIAL BEACH, CA. 09043

Rwy 8,9,26 departures not authorized.

Rwy 27: Diverse departure not authorized.

Departures authorized for military rotorcraft only. Climb to 2000 via heading 272 to intercept NRS TACAN R-270. Cross NRS 1.5 DME at or above 800. Minimum ATC climb rate of 600'/NM til 800 with take-off occurring NLT 3038' prior to DER or cross DER at or above 320.

INYOKERN, CA

INYOKERN

TAKE-OFF MINIMUMS: **Rwys 2, 10, 15, 28, 33**, NA.

DEPARTURE PROCEDURE: **Rwy 20**, use LAKE HUGHES RNAV DEPARTURE.

LA VERNE, CA

BRACKETT FIELD

TAKE-OFF MINIMUMS: **Rwys 26L, 26R**, 300-1.

DEPARTURE PROCEDURE: **Rwys 8L, 8R**, climb via heading 079 to 1500, then climbing right turn via heading 195 and POM R-164 to PRADO Int. **Rwys 26L, 26R**, climb via heading 259 to 1400, then climbing left turn via heading 130 and POM R-164 to PRADO Int.

Aircraft departing PRADO Int heading 141 clockwise 290 climb on course. All others climb in PRADO Int holding pattern (hold north, right turn, 164 inbound) to depart PRADO Int at or above: 291 clockwise 340; 4500; 341 clockwise 050; 6800; 051 clockwise 090; 5200; 091 clockwise 140; 4200.

NOTE: **Rwy 26L**, multiple trees and antenna beginning 370' from departure end of runway, 269' left of centerline up to 100' AGL/1116' MSL. Multiple trees beginning 896' from departure end of runway, 70' right of centerline, up to 100' AGL/1010' MSL. Multiple buildings and tanks beginning 2732' from departure end of runway, 416' right of centerline, up to 50' AGL/1230' MSL. **Rwy 26R**, hangar 241' from departure end of runway, 326' right of centerline, 35' AGL/994' MSL. Multiple trees beginning 1473' from departure end of runway, 807' left of centerline, up to 100' AGL/1116' MSL. Tank and trees beginning 2510' from departure end of runway, 503' right of centerline, up to 100' AGL/1289' MSL.

LANCASTER, CA

GENERAL WM. J. FOX AIRFIELD (WJF)

ORIG-A 09267 (FAA)

DEPARTURE PROCEDURE: Climb southeastbound on R-299 to PMD VORTAC. Depart PMD at published MCA for direction of flight.

NOTE: **Rwy 6**, trees beginning 1170' from DER, 590' right of centerline, up to 44' AGL/2374' MSL.

LOMPOC, CA

LOMPOC

TAKE-OFF MINIMUMS: **Rwy 7**, std. with a min. climb of 425' per NM to 1400, or 1000-3 for climb in visual conditions.

DEPARTURE PROCEDURE: **Rwy 7**, climbing right turn. For climb in visual conditions: cross Lompoc Airport eastbound at or above 1200 MSL. **Rwy 25**, turn right heading 130°.

All aircraft climb to 6000 via GVO R-278 to GVO VORTAC. Aircraft departing GVO R-120 CW R-020 climb on course, all others climb in GVO holding pattern (NW, right turns, 127 inbound) to depart GVO VORTAC at or above MEA for route of flight.

NOTE: **Rwy 7**, trees 3583' from departure end of runway, 2.3 NM right of centerline, 50' AGL/889' MSL. Trees 1.2 NM from departure end of runway, 2.2 NM right of centerline, 50' AGL/791' MSL. Trees 1.6 NM from departure end of runway, 1.9 NM right of centerline, 50' AGL/743' MSL.

31 MAY 2012 to 28 JUN 2012

31 MAY 2012 to 28 JUN 2012

12152

TAKE-OFF MINIMUMS AND (OBSTACLE) DEPARTURE PROCEDURES

TAKE-OFF MINIMUMS AND (OBSTACLE) DEPARTURE PROCEDURES

12152

LONG BEACH, CA

LONG BEACH (DAUGHERTY FIELD)

TAKE-OFF MINIMUMS: **Rwy 16L**, 400-1½ or std. w/ min climb of 321' per NM to 500. **Rwy 16R**, 400-1 or std. w/ min. climb of 518' per NM to 500. **Rwy 25L**, std. w/ min. climb of 225' per NM to 2300. **Rwy 25R**, std. w/ min. climb of 223' per NM to 2200. **Rwys 34L, 34R**, NA- Environmental and noise abatement.

DEPARTURE PROCEDURE: **Rwys 7L, 7R**, climb heading 076° to 800, then climbing right turn direct SLI VORTAC and SLIR-210 to PADDR INT. **Rwy 12**, climb heading 121° to intercept SLI VORTAC R-210 to PADDR INT. **Rwys 16L, 16R**, climb heading 166° to 800, then climbing right turn heading 180° and SLI VORTAC R-210 to PADDR INT. **Rwys 25L, 25R**, climb heading 256° to 800, then climbing left turn heading 200° and LAX VORTAC R-145 to PADDR INT. **Rwy 30**, climb heading 301° to 800, then climbing left turn heading 200° and LAX VORTAC R-145 to PADDR INT.

NOTE: **Rwy 7L**, sign 287' from DER, 173' left of centerline, 8' AGL/45' MSL. Vehicle on road 320' from DER, 248' left of centerline, 13' AGL/50' MSL. Light 468' from DER, 307' left of centerline, 19' AGL/56' MSL. Tree 1326' from DER, 75' left of centerline, 60' AGL/97' MSL. Trees beginning 579' from DER, 7' right of centerline, up to 71' AGL/108' MSL. Hangar 347' from DER, 416' right of centerline, 13' AGL/50' MSL. **Rwy 7R**, hangar 260' from DER, 498' left of centerline, 31' AGL/64' MSL. Multiple trees beginning 1408' from DER, 1' left of centerline, up to 64' AGL/94' MSL. Light 459' from DER, 581' right of centerline, 14' AGL/44' MSL. Antenna obstruction light 1473' from DER, 822' right of centerline, 88' AGL/115' MSL. **Rwy 12**, multiple trees beginning 1431' from DER, 469' left of centerline, up to 66' AGL/86' MSL. Light 1127' from DER, 606' left of centerline, 36' AGL/56' MSL. Multiple trees beginning 970' from DER, 392' right of centerline, up to 64' AGL/87' MSL. Spire 3095' from DER, 1183' right of centerline, 92' AGL/115' MSL. **Rwy 16L**, terrain beginning 155' from DER, 152' left of centerline, up to 40' MSL. Multiple trees beginning 427' from DER, 136' left of centerline, up to 32' AGL/109' MSL. Multiple lights, buildings and lights on buildings beginning 285' from DER, 256' left of centerline, up to 113' AGL/159' MSL. Multiple flag poles 1165' from DER, 8' left of centerline, up to 60' AGL/116' MSL. Rising terrain beginning 156' from DER, 100' right of centerline 40' MSL. Multiple trees beginning 296' from DER, 149' right of centerline, up to 38' AGL/218' MSL. Multiple buildings beginning 2057' from DER, 253' right of centerline, up to 30' AGL/91' MSL. **Rwy 16R**, rising terrain beginning 29' from DER on centerline, up to 309' MSL. Multiple trees beginning 835' from DER, 46' left of centerline, up to 112' AGL/156' MSL. Sign 1453' from DER, 139' left of centerline, 50' AGL/94' MSL. Pole 3034' from DER, 302' left of centerline, 91' AGL/135' MSL. Light on tank 4079' from DER, 114' left of centerline, 108' AGL/152' MSL. Multiple tower antennas beginning 8017' from DER, 1913' left of centerline, up to 291' AGL/335' MSL. Antenna on hangar 352' from DER, 399' right of centerline, 38' AGL/82' MSL. Multiple trees beginning 787' from DER, 319' right of centerline, 32' AGL/293' MSL. Multiple poles beginning 2028' from DER, 295' right of centerline, up to 241' AGL/248' MSL. Chimney on building, 4661' from DER, 1553' right of centerline, 33' AGL/353' MSL.

LONG BEACH (DAUGHERTY FIELD) (CONT)

Rwy 25L, multiple trees beginning 2407' from DER, 111' left of centerline, up to 38' AGL/117' MSL. Obstruction light on tower 2493' from DER, 503' left of centerline, 69' AGL/152' MSL. Rising terrain beginning 110' on centerline, up to 66' MSL. Obstruction light rod on hangar, 1149' from DER, 793' right of centerline, 109' AGL/169' MSL. Antenna 3821' from DER, 439' right of centerline, 66' AGL/155' MSL. **Rwy 25R**, Ford sign beginning 551' from DER, 27' right of centerline, up to 100' AGL/159' MSL. Railroad beginning 202' from DER, 3' left of centerline, 66' AGL/155' MSL. Multiple lights and light poles beginning 321' from DER, 111' left of centerline, up to 32' AGL/92' MSL. Sign 1142' from DER, 33' left of centerline, 35' AGL/104' MSL. Multiple trees beginning 1142' from DER, 9' left of centerline, up to 67' AGL/146' MSL. Multiple obstruction lights beginning 67' from DER, 59' right of centerline, up to 202' AGL/260' MSL. Multiple trees beginning 1246' from DER, 1' right of centerline, up to 87' AGL/145' MSL. **Rwy 30**, railroad beginning 647' from DER, on centerline, up to 27' AGL/91' MSL. Multiple antennas, rods, vents and lights on buildings beginning 356' from DER, 289' left of centerline, up to 27' AGL/87' MSL. Multiple poles beginning 2061' from DER, 312' left of centerline, up to 51' AGL/124' MSL. Railroad beginning 207' from DER, 485' right of centerline, up to 25' AGL/81' MSL. Multiple obstruction lights and poles beginning 632' from DER, 240' right of centerline, up to 66' AGL/142' MSL. Multiple trees beginning 1701' from DER, 136' right of centerline, up to 73' AGL/146' MSL. Building 2617' from DER, 802' right of centerline, 63' AGL/136' MSL.

LOS ALAMITOS AAF (KSLI)

LOS ALAMITOS, CA

..... Rwy 22L/R, 300-1*

* Or standard with minimum climb of 230/NM to 400. Rwy 4L/R climbing right turn; Rwy 22L/R climbing left turn. All aircraft climb direct SLI VORTAC. Aircraft departing SLI VORTAC R-040 CW 345 climb on course. All others continue climb via the SLI R-171 southbound then climbing right turn direct SLI VORTAC to cross at or above 4600'.

31 MAY 2012 to 28 JUN 2012

31 MAY 2012 to 28 JUN 2012

12152

TAKE-OFF MINIMUMS AND (OBSTACLE) DEPARTURE PROCEDURES

TAKE-OFF MINIMUMS AND (OBSTACLE) DEPARTURE PROCEDURES

12152

LOS ANGELES, CA

LOS ANGELES INTL (LAX)
AMDT 12 08325 (FAA)

TAKE-OFF MINIMUMS: **Rwy 6R**, 200-1¼ or std. with a min. climb of 275' per NM to 400.
DEPARTURE PROCEDURE: **Rwys 6L/R, 7L/R**, climb to 2000 heading 070°; then climbing right turn, thence... **Rwys 24L/R**, climb to 2000 heading 250°; then climbing left turn, thence... **Rwys 25L/R**, turbojet climb to 2000 heading 250°; then climbing left turn, thence... non-turbojet climb to 2000 heading 250°; at the SMOR-154 turn left heading 200°; thence...

...climb direct SLI VORTAC, then climb on course.

NOTE: **Rwy 6L**, buildings and signs beginning 1693' from departure end of runway, 339' left of centerline, up to 50' AGL/201' MSL. **Rwy 6R**, antenna on building 560' from departure end of runway, 479' right of centerline, 18' AGL/127' MSL, obstruction light on building 5550' from departure end of runway, 1791' right of centerline, 202' AGL/306' MSL, obstruction light on sign and sign beginning 1866' from departure end of runway, 920' left of centerline, up to 49' AGL/161' MSL. **Rwy 7L**, obstruction light on blast fence 168' from departure end of runway, 33' left of centerline, 14' AGL/106' MSL, poles beginning 1290' from departure end of runway, 505' left of centerline, up to 55' AGL/147' MSL, antenna on building 1576' from departure end of runway, 315' left of centerline, 55' AGL/147' MSL, sign and railroad beginning 351' from departure end of runway, 10' left of centerline, up to 29' AGL/124' MSL, railroad 275' from departure end of runway, 500' right of centerline, 23' AGL/115' MSL, approach light and obstruction light on LOC beginning 979' from departure end of runway, on runway centerline, up to 27' AGL/119' MSL. **Rwy 7R**, trees and building beginning 790' from departure end of runway, 606' right of centerline, up to 58' AGL/157' MSL. **Rwy 24L**, bush 956' from departure end of runway, 600' left of centerline, 40' AGL/148' MSL. Light poles beginning 273' from departure end of runway, 425' left of centerline, up to 10' AGL/120' MSL, antenna on pole 1357' from departure end of runway, 286' right of centerline, 36' AGL/144' MSL, light poles and bushes beginning 239' from departure end of runway, 321' right of centerline, up to 8' AGL/116' MSL. **Rwy 24R**, obstruction light on glideslope 212' from departure end of runway, 399' left of centerline, 39' AGL/151' MSL. **Rwy 25L**, tree and pole beginning 2366' from departure end of runway, 764' left of centerline, up to 80' AGL/197' MSL, transmission towers beginning 2800' from departure end of runway, 926' left of centerline, up to 71' AGL/192' MSL, bush 133' from departure end of runway, 397' left of centerline, 4' AGL/123' MSL.

WHITEMAN

TAKE-OFF MINIMUMS: **Rwys 12, 30**, 2900-2 or std. with a min. climb of 350' per NM to 4300.
DEPARTURE PROCEDURE: **Rwy 12**, climbing right turn direct VNY VOR/DME. **Rwy 30**, climbing left turn heading 260°. All aircraft climb to 4500 via VNY R-325, then climbing left turn direct VNY VOR/DME.

MARCH ARB (KRIV)

RIVERSIDE, CA AMDT 4 12152

Rwy 32, 1200-3*

* Or standard with a minimum climb rate of 240 ft/NM to 3100'.

DEPARTURE PROCEDURE: **Rwy 14**, Climb direct HDF VOR, then climbing right turn on heading between 155°CW to 181°. Max airspeed 250 KIAS. **Rwy 32**, Climb left turn heading between 150° to 135°CW from departure end of the runway. Maximum 250 KIAS or 2300-3 For Climb in Visual Conditions within 6.5 NM of March ARB, cross March ARB at or above 3700' MSL, then climb and maintain 6000 direct HDF VOR, then via HDF R-153 to HDF R-153/PDZ R-130, direct SKYES INT. Do not exceed 250 KIAS until passing SKYES. Aircraft shall advise ATC prior to executing VCOA. VCOA not available for Cat E aircraft.

TAKE-OFF OBSTACLES: **Rwy 14**, Tree 150' AGL/1630' MSL, 2248' from DER, 1000' right of centerline. Tree 150' AGL/1630' MSL, 1920' from DER, 1000' right of centerline. Tree 150' AGL/1630' MSL, 1789' from DER, 1000' right of centerline. Tree 150' AGL/1622' MSL, 2278' from DER, 1002' left of centerline. Aircraft 65' AGL/1550' MSL, 28' inward of DER, 542' left of centerline. Aircraft 30' AGL/1516' MSL, 31' inward of DER, 298' left of centerline. Use caution when departing **Rwy 14**, rapid rising terrain within 3.5 NM SE of March ARB. **Rwy 32**, Aircraft 65' AGL/1600' MSL, 30' from DER, 526' right of centerline. Aircraft 30' AGL/1565' MSL, 5' from DER, 282' right of centerline.

MIRAMAR MCAS

(MITSCHER FLD) (KNKX), CA.....09351

Rwy 6LR 340° through 150°CW-Civil standard with minimum climb of 300'/NM to 7600; military, standard with minimum climb of 280'/NM to 7600. **Rwy 24L/R** 340° through 100°CW-Civil standard with minimum climb of 290'/NM to 7600; Military, standard with minimum climb of 270'/NM to 7600.

TAKE-OFF OBSTACLES: **Rwy 6L**, Bldg 539' MSL, 2381' from DER, 1084' left of centerline. **Rwy 24R**, Pylon 473' MSL, 1879' from DER, 673' left of centerline.

MOJAVE, CA

MOJAVE (MHV)

AMDT 2 11237 (FAA)

TAKE-OFF MINIMUMS: **Rwys 4, 8, 12**, NA-restricted airspace. **Rwys 22, 26**, std. w/min. climb of 415' per NM to 6800 or 4100-3 for climb in visual conditions. **Rwy 30**, std. w/min. climb of 485' per NM to 6300 or 4100-3 for climb in visual conditions.
DEPARTURE PROCEDURE: **Rwy 22**, climb to 8000 heading 218° and LHS R-023 to LHS VORTAC or for climb in visual conditions cross Mojave Airport southwest bound at or above 6800, then climb to 8000 on LHS R-023 to LHS VORTAC. **Rwy 26**, climbing left turn to 8000 heading 218° and LHS R-023 to LHS VORTAC or for climb in visual conditions cross Mojave Airport at or above 6800, then climb to 8000 on LHS R-023 to LHS VORTAC. **Rwy 30**, climbing left turn to 8000 heading 200° and LHS R-023 to LHS VORTAC or for climb in visual conditions cross Mojave Airport at or above 6800, then climb to 8000 on LHS R-023 to LHS VORTAC.

NOTE: **Rwy 22**, antenna on tower 2260' from DER, 812' right of centerline, 60' AGL/2838' MSL. Sign 283' from DER, 466' right of centerline, 10' AGL/2788' MSL. **Rwy 26**, antenna on tower 1797' from DER, 615' left of centerline, 58' AGL/2838' MSL. Sign 32' from DER, 341' right of centerline, 8' AGL/2788' MSL. Tree 258' from DER, 120' left of centerline, 8' AGL/2788' MSL. **Rwy 30**, multiple poles beginning 3083' from DER, 306' right of centerline, up to 91' AGL/2892' MSL. Road and railroad beginning 1241' from DER, right and left of centerline, up to 44' AGL/2845' MSL. Bush 305' from DER, 457' right of centerline, 16' AGL/2817' MSL.

31 MAY 2012 to 28 JUN 2012

31 MAY 2012 to 28 JUN 2012

12152

TAKE-OFF MINIMUMS AND (OBSTACLE) DEPARTURE PROCEDURES

TAKE-OFF MINIMUMS AND (OBSTACLE) DEPARTURE PROCEDURES

12152

MURRIETA/TEMECULA, CA

FRENCH VALLEY

TAKE-OFF MINIMUMS: **Rwy 18, NA. Rwy 36**, 700-2 or std. with a min. climb of 340' per NM to 2200.

DEPARTURE PROCEDURE: **Rwy 36**, climb runway heading to 2200, then climbing left turn via HDF R-145 to HDF VOR. Aircraft departing HDF VOR 065°CW 352° climb on course. Aircraft departing northeastbound, climb in HDF holding pattern, (SE, right turns, 315° inbound) to depart HDF VOR at or above: 353°CW 054°, 6800; 055°CW 064° 5800; before proceeding on course.

NEEDLES, CA

NEEDLES

DEPARTURE PROCEDURE: **Rwys 2, 29**, turn right.

Rwy 20, turn left. **All aircraft** climb direct EED VORTAC, then continue climb on course. Departures on V12, J6, and J8 cross EED VORTAC at or above 2600.

NORTH ISLAND NAS (HALSEY FIELD)

(KNZY)

SAN DIEGO, CA. 09127

Rwy 11, diverse departures authorized 129°CW 182°. Make immediate right turn to assigned heading within 1.4 DME of NZY TACAN to avoid over flying the City of Coronado.

Rwy 18, diverse departures authorized 129°CW 175°. **Rwy 29**, diverse departures not authorized. Use published DP or 800-2¼ for climb in visual conditions via immediate climbing left turn to cross North Island airport at or above 800' MSL, during visual climb do not overfly Point Loma and remain south of Rwy 11-29, then climb to 2000 via heading 175°, expect radar vectors to join assigned route. Cross DER at or above 35' AGL (54' MSL).

Rwy 36, departure not authorized.

TAKE-OFF OBSTACLES:

Rwy 11, Trees 52' AGL/78' MSL, 108' from DER, 336' right of centerline; Trees 30' AGL/54' MSL, 994' from DER, 733' left of centerline.

Rwy 29, Shipping Channel accommodating vessels up to 200' AGL (206' MSL with tidal range), starting 2577' from DER on centerline. Twin Towers 145' AGL/534' MSL, 1.4 NM from DER, 2645' left of centerline; Tower 479' MSL, 1.5 NM from DER, 1969' left of centerline; Tower 100' AGL/ 455' MSL, 1.5 NM from DER, 2054' left of centerline; Tower 120' AGL/544' MSL, 1139' from DER, 2.1 NM left of centerline.

OCEANSIDE, CA

OCEANSIDE MUNI

TAKE-OFF MINIMUMS: **Rwy 6**, 400-1 or std. with a min. climb of 320' per NM to 500. **Rwy 24**, 300-1 or std. with min. climb of 670' per NM to 300.

DEPARTURE PROCEDURE: **Rwy 6**, climbing right turn. **Rwy 24**, climbing left turn. **All aircraft** climb via heading 235° to 1500, then climbing right turn direct OCN VORTAC.

ONTARIO, CA

ONTARIO INTL (ONT)

AMDT 8 11041 (FAA)

TAKE-OFF MINIMUMS: **Rwys 8L, 8R**, std. w/ min. climb of 285' per NM to 3000.

DEPARTURE PROCEDURE: **Rwys 8L, 8R**, climb heading 076° to 2600 then climbing right turn direct PDZ VORTAC, thence... **Rwys 26L, 26R**, climb heading 256° to 2200 then climbing left turn direct PDZ VORTAC, thence...

...climb in PDZ holding pattern (hold NE, right turns, 210° inbound) to cross PDZ VORTAC at or above MEA for route of flight before proceeding on course.

NOTE: **Rwy 8L**, light pole 2045' from DER, 839' left of centerline, 40' AGL/990' MSL. Light pole 2042' from DER, 684' left of centerline, 40' AGL/988' MSL. Building 1606' from DER, 846' left of centerline, 25' AGL/ 975' MSL. Ground 81' from DER, 444' left of centerline, 936' MSL. **Rwy 26L**, OL on GS 125' from DER, 340' right of centerline, 40' AGL/982' MSL. Pole 755' from DER, 670' left of centerline, 40' AGL/964' MSL. Multiple trees beginning 1050' from DER, 708' left of centerline, up to 50' AGL/986' MSL. **Rwy 26R**, ground 30' from DER, 497' left of centerline, 951' MSL. Antenna on building 194' from DER, 396' left of centerline, 20' AGL/950' MSL. OL on DME 369' from DER, 263' left of centerline, 20' AGL/ 962' MSL. OL on LOC 381' from DER, 1' right of centerline, 10' AGL/953' MSL. Multiple light poles beginning 484' from DER, 371' left to 543' right of centerline, up to 40' AGL/986' MSL. Multiple poles beginning 580' from DER, 610' left to 767' right of centerline, up to 30' AGL/986' MSL. Railroad 893' from DER, 595' left of centerline, 23' AGL/990' MSL. Multiple trees beginning 1672' from DER, 1140' right of centerline, up to 40' AGL/1 030' MSL.

OXNARD, CA

OXNARD

TAKE-OFF MINIMUMS: **Rwy 7**, 2100-5 or std. with a min. climb of 290' per NM to 2600.

DEPARTURE PROCEDURE: **Rwy 7**, climbing left turn.

Rwy 25, climb runway heading. **All aircraft** continue climb to 6000 (or assigned altitude) via CMA R-249 to SQUID Int. Aircraft departing SQUID Int 040°CW 300° climb on course. All others continue climb in SQUID holding pattern (Hold W, right turns, 069° inbound) to cross SQUID INT at or above 2300.

NOTE: **Rwy 7**, 59' AGL tree 527' from departure end of runway, 501' left of centerline.

PALM SPRINGS, CA

BERMUDA DUNES

TAKE-OFF MINIMUMS: **Rwy 28**, CAT A,B 1200-2 or std. with a min. climb of 450' per NM to 1400. CAT C,D 2100-2 or std. with a min. climb of 490' per NM to 3400.

DEPARTURE PROCEDURE: **Rwy 10**, climbing right turn heading 150°. **Rwy 28**, climbing left turn heading 090°. **All aircraft** continue climb via TRM R-304 to TRM VORTAC. Aircraft departing TRM R-095 CW R-165 climb on course. All others continue climb in TRM holding pattern (E, right turns, 289° inbound) to cross TRM VORTAC at or above: R-166 CW 290°; 6500; 291° CWR-310, 4900; R-311 CW 094°; 3200.

31 MAY 2012 to 28 JUN 2012

31 MAY 2012 to 28 JUN 2012

12152

TAKE-OFF MINIMUMS AND (OBSTACLE) DEPARTURE PROCEDURES

TAKE-OFF MINIMUMS AND (OBSTACLE) DEPARTURE PROCEDURES

12152

PALM SPRINGS, CA (CON'T)

JACQUELINE COCHRAN RGNL

TAKE-OFF MINIMUMS: **Rwy 30**, CAT C, D 3400-2 or std. with a min. climb of 410' per NM to 3700. **Rwy 35**, CAT A, B 400-2 or std. with a min. climb of 210' per NM to 400. CAT C, D 3400-2 or std. with a min. climb of 410' per NM to 3700.

DEPARTURE PROCEDURE: **Rwys 12, 17**, climbing left turn. **Rwys 30, 35**, climbing right turn heading 150°. Aircraft departing TRM R-101 CW R-139, climb on course. All others continue climb east-bound via the TRM R-109 then climbing right turn to cross TRM VORTAC at or above: R-304 CW R-100, 4000; R-140 CW R-199, 4700; R-200 CW R-303, 6600.

PALM SPRINGS INTL (PSP)

AMDT 5 08101 (FAA)

TAKE-OFF MINIMUMS: **Rwy 13L**, minimum climb of 440' per NM to 2300' or 5900-3 for climb in visual conditions. **Rwy 13R**, minimum climb of 422' per NM to 2300' or 5900-3 for climb in visual conditions. **Rwy 31L**, minimum climb of 386' per NM to 4500' or 5900-3 for climb in visual conditions. **Rwy 31R**, minimum climb of 405' per NM to 4500' or 5900-3 for climb in visual conditions.

DEPARTURE PROCEDURE: **Rwys 13L/R**, climbing left turn heading 090° to intercept TRM R-304 to TRM VORTAC or for climb in visual conditions cross Palm Springs Intl airport at or above 6300 then direct PSP VORTAC thence... **Rwy's 31L/R**, climbing right turn direct PSP VORTAC thence..., or for climb in visual conditions cross Palm Springs Intl airport at or above 6300 then direct PSP VORTAC thence...

... via PSP R-124 and TRM R-304 to TRM VORTAC.

All **Rwys** if not at MEA/MCA at TRM VORTAC, climb in TRM holding pattern (hold E, right turns, 289° inbound) until reaching MEA/MCA for assigned route of flight.

NOTE: **Rwy 13L**, trees beginning 299' from departure end of runway, 530' left of centerline, up to 66' AGL/465' MSL. HGR 935' from departure end of runway, 552' left of centerline, 31' AGL/440' MSL. **Rwy 13R**, trees beginning 1170' from departure end of runway, 239' right of centerline, up to 100' AGL/599' MSL. Poles beginning 815' from departure end of runway, 209' right of centerline, up to 44' AGL/433' MSL. Light 843' from departure end of runway, 441' right of centerline, 38' AGL/427' MSL. Antenna 1642' from departure end of runway, 26' right of centerline, 53' AGL/442' MSL. **Rwy 31L**, poles beginning 1641' from departure end of runway, 125' right of centerline, up to 31' AGL/550' MSL. Towers beginning 2418' from departure end of runway, 402' left of centerline, up to 59' AGL/560' MSL. Tree 3016' from departure end of runway, 66' right of centerline, 43' AGL/562' MSL. **Rwy 31R**, multiple trees and bushes beginning 305' from departure end of runway, 233' right of centerline, up to 48' AGL/507' MSL. Vent on building 919' from departure end of runway, 399' right of centerline, 15' AGL/474' MSL.

PALMDALE, CA

PALMDALE RGNL/USAF PLANT 42 (PMD)

AMDT 2 10154 (FAA)

TAKE-OFF MINIMUMS: **Rwy 22**, std. with a min. climb of 300' per NM to 3800 or 1300-3 for climb in visual conditions.

DEPARTURE PROCEDURE: **Rwys 4, 7**, climbing left turn intercept PMD VORTAC R-298 to cross FISCH INT at or above MEA/MCA for route of flight, if not at MEA/MCA continue climb in FISCH INT holding pattern (hold Southeast, left turns, 298° inbound) to cross FISCH INT at or above 6500 or MCA for route of flight. **Rwy 22**, climbing right turn intercept PMD VORTAC R-298 to cross FISCH INT at or above MEA/MCA for route of flight, if not at MEA/MCA continue climb in FISCH INT holding pattern (hold Southeast, left turns, 298° inbound) to cross FISCH INT at or above 6500 or MCA for route of flight, or for climb in visual conditions cross Palmdale Rgnl/USAF Plant 42 at or above 3700 then via PMD VORTAC R-298 to cross FISCH INT at or above MEA/MCA for route of flight, if not at MEA/MCA continue climb in FISCH INT holding pattern (hold Southeast, left turns, 298° inbound) to cross FISCH INT at or above 6500 or MCA for route of flight. **Rwy 25**, climbing right turn intercept PMD VORTAC R-298 to cross FISCH INT at or above MEA/MCA for route, if not at MEA/MCA continue climb in FISCH INT holding pattern (hold Southeast, left turns, 298° inbound) to cross FISCH INT at or above 6500 or MCA for route of flight.

NOTE: **Rwy 25**, tree 2395' from DER 986' left of centerline, 100' AGL/2659' MSL.

PASO ROBLES, CA

PASO ROBLES MUNI

DEPARTURE PROCEDURE: All departures maintain 250 kts or less until inbound to PRB. **Rwy 1**, climb to 3000 via heading 280° to intercept PRB R-326 outbound. V248 northbound climb on course. All others climbing right turn to 4500 direct PRB. **Rwy 13**, climb to 3000 via heading 160° to intercept PRB R-133 outbound. V25 southbound continue climb on course. All others climbing right turn to 4500 direct PRB. **Rwy 19**, climb to 3000 via heading 150° to intercept PRB R-179 outbound. V113 southbound continue climb on course. All others climbing left turn to 4500 direct PRB. **Rwy 31**, climb to 3000 via heading 340° to intercept PRB R-326 outbound. V248 northbound climb on course. All others climbing right turn to 4500 direct PRB.

31 MAY 2012 to 28 JUN 2012

31 MAY 2012 to 28 JUN 2012

12152

TAKE-OFF MINIMUMS AND (OBSTACLE) DEPARTURE PROCEDURES

TAKE-OFF MINIMUMS AND (OBSTACLE) DEPARTURE PROCEDURES

12152

POINT MUGU NAS (NAVAL BASE VENTURA CO) (KNTD)

OXNARD, CA 09267

DEPARTURE PROCEDURE:

Rwy 3, Diverse departures authorized 210° to 250° CW.

Right turns on departure not authorized. Turn left to assigned heading within 3 DME of NTD TACAN. Do not exceed 310 KIAS until established on assigned heading.

Rwy 9, Diverse departures not authorized.

Rwy 21, Diverse departures authorized 150° to 250° CW.

Rwy 27, Diverse departures authorized 150° to 250° CW.

Right turns on departure not authorized. Turn left to assigned heading. Do not exceed 310 KIAS until established on assigned heading.

CAUTION: Mountainous terrain NW thru SE.

TAKE-OFF OBSTACLES: **Rwy 3**, Tower 90' MSL, 3005' from DER, 1238' left of centerline; Trees 90' MSL, 2920' from DER, 1199' left of centerline.

RAMONA, CA

RAMONA (RNM)

AMDT 3 09183 (FAA)

TAKE-OFF MINIMUMS: **Rwy 9**, std. w/ min. climb of 500' per NM to 4000, or 3800-3 for climb in visual conditions. **Rwy 27**, std. w/ min. climb of 332' per NM to 2600, or 3800-3 for climb in visual conditions.

DEPARTURE PROCEDURE: **Rwy 9**, climb via heading

088° to 4000, then climbing left turn via heading 330° and JLI VORTAC R-263/OCN VORTAC R-083 to ROBNN INT before proceeding on course, or for climb in visual conditions, cross Ramona airport at or above 5000 before proceeding on course. **Rwy 27**, climb via heading 268° to 2600, then climbing right turn via PGY VORTAC R-336 to ROBNN INT before proceeding on course, or for climb in visual conditions, cross Ramona airport at or above 5000 before proceeding on course.

NOTE: **Rwy 9**, sign 23' from DER, 178' left of centerline, 9' AGL/1399' MSL. Tree 94' from DER, 343' right of centerline, 20' AGL/1403' MSL. Trees beginning 2468' from DER, 180' right of centerline, up to 100' AGL/1539' MSL. Trees beginning 2637' from DER, 305' left of centerline, up to 100' AGL/1487' MSL. **Rwy 27**, tree 657' from DER, 12' left of centerline, 100' AGL/1499' MSL. Trees 1.85 NM from DER, 92' left of centerline, up to 100' AGL/1719' MSL.

REDLANDS, CA

REDLANDS MUNI

TAKE-OFF MINIMUMS: **Rwy 8, NA, Rwy 26**, 1700-2 or std. with a min. climb of 300' per NM to 4000.

DEPARTURE PROCEDURE: Climbing left turn direct PDZ VORTAC. Aircraft departing PDZ VORTAC R-091 CW R-140 and R-231 CW R-280 climb on course. All others continue in PDZ VORTAC holding pattern (hold NE, right turns, 210° inbound) to cross PDZ VORTAC at or above, R-281 CW R-090, 7700; R-141 CW R-230, 4900.

RIALTO, CA

RIALTO MUNI-MIRO FIELD

TAKE-OFF MINIMUMS: **Rwys 17, 35, NA.**

DEPARTURE PROCEDURE: **Rwy 6**, climbing right turn. **Rwy 24**, climbing left turn. **All aircraft** climb via PDZ R-012 to PDZ VORTAC. Aircraft departing PDZ R-091 CW R-140 and R-231 CW R-280 climb on course. All others continue climb in PDZ holding pattern (NE, right turns, 210° inbound) to cross PDZ VORTAC at or above: R-281 CW R-090, 6700; R-141 CW R-230, 4000.

RIVERSIDE, CA

RIVERSIDE MUNI

TAKE-OFF MINIMUMS: **Rwy 9**, CAT A, B 1200-2 or std.

with a min. climb of 210' per NM to 2300. CAT C, D 2100-2 or std. with a min. climb of 240' per NM to 3500.

Rwy 16, NA, Rwy 27, CAT C, D 2400-2 or std. with a min. climb of 230' per NM to 3800. **Rwy 34**, CAT A, B 700-2 or std. with a min. climb of 400' per NM to 1600. CAT C, D 1600-2 or std. with a min. climb of 400' per NM to 2600.

DEPARTURE PROCEDURE: **Rwy 9**, climbing right turn. **Rwy 34**, climbing left turn. **Rwy 27**, climb heading 280° to 2000, then climbing left turn. **All aircraft** climb direct PDZ VORTAC. Aircraft departing PDZ R-091 CW R-140 and R-231 CW R-280 climb on course. All others continue climb in PDZ holding pattern (NE, right turns, 210° inbound) to cross PDZ VORTAC at or above: R-281 CW R-090, 6700; R-141 CW R-230, 4000; or Airway MEA.

RIVERSIDE/RUBIDOUX, CA

FLABOB (RIR)

ORIG 11181 (FAA)

TAKE-OFF MINIMUMS: **Rwy 6**, std. w/ min. climb of 670' per NM to 4000 or 400-2 w/ min. climb of 480' per NM to 4000 or 2100-3 for climb in visual conditions.

Rwy 24, std. w/ min. climb of 630' per NM to 3000 or 800-2 ¼ w/ min. climb of 305' per NM to 4600 or 2100-3 for climb in visual conditions.

DEPARTURE PROCEDURE: **Rwy 6**, climb via heading 064° to 4000 then right turn direct PDZ VORTAC, or for climb in visual conditions cross Flabob Airport Southwest bound at or above 2700 then via PDZ R-039 to PDZ VORTAC. **Rwy 24**, climb via heading 244° and PDZ R-031 to PDZ VORTAC, or for climb in visual conditions cross Flabob airport Southwest bound at or above 2700 then via PDZ R-039 to PDZ VORTAC.

All aircraft climb in PDZ VORTAC holding pattern (hold East, right turns, 258° inbound) to cross PDZ VORTAC at or above MEA for direction of flight before proceeding on course.

NOTE: **Rwy 6**, trees beginning 3763' from DER, 1152' right of centerline, up to 40' AGL/1119' MSL. **Rwy 24**, antenna on tank 6193' from DER, 2057' right of centerline, 38' AGL/1237' MSL. Trees beginning 2494' from DER, 434' right of centerline, up to 40' AGL/1519' MSL. Pole 6261' from DER, 1950' right of centerline, 30' AGL/1230' MSL. Building 1.52 NM from DER, 1154' right of centerline, up to 29' AGL/1369' MSL. Antenna on tank 1.26 NM from DER, 2047' right of centerline, 54' AGL/1254' MSL. Tank 4043' from DER, 794' right of centerline, 66' AGL/961' MSL. Tree 1.79 NM from DER, 434' right of centerline, 58' AGL/1138' MSL.

31 MAY 2012 to 28 JUN 2012

31 MAY 2012 to 28 JUN 2012

12152

TAKE-OFF MINIMUMS AND (OBSTACLE) DEPARTURE PROCEDURES

TAKE-OFF MINIMUMS AND (OBSTACLE) DEPARTURE PROCEDURES

12152

SAN BERNARDINO, CA

SAN BERNARDINO INTL

TAKE-OFF MINIMUMS: **Rwy 6**, CAT A, B 2100-2 or std. with a min. climb of 340' per NM to 3700. CAT C, D 3100-2 or std. with a min. climb of 480' per NM to 4600.

DEPARTURE PROCEDURE: **Rwy 6**, climbing right turn.

Rwy 24, climbing left turn. **All aircraft** climb direct PDZ VORTAC. Aircraft departing PDZ R-091 CW R-140 and R-231 CW R-280 climb on course. All others continue climb in PDZ holding pattern (Hold NE, right turns, 210° inbound) to cross PDZ VORTAC at or above: R-281 CW R-090, 7700; R-141 CW R-230, 4900.

SAN CLEMENTE ISLAND NALF

(FREDERICKSHERMAN FLD)(KNUC)

SAN CLEMENTE ISLAND, CA 09071

Rwy 5: Diverse departures authorized 090° to 233° CCW.

Rwy 23: Diverse departures authorized 160° to 053° CW.

TAKEOFF OBSTACLES: **Rwy 5**, Pylon 198' MSL, 44' from DER, 273' right of centerline.

SAN DIEGO, CA

BROWN FIELD MUNI (SDM)

AMDT 4 10154 (FAA)

TAKE-OFF MINIMUMS: **Rwy 8L**, std. w/ min. climb of 570' per NM to 3100. **Rwys 8R, 26L**, NA - ATC.

DEPARTURE PROCEDURE: **Rwy 8L**, climbing left turn, thence... **Rwy 26R**, climbing right turn, thence...
...via heading 280° to intercept MZB R-160 to MZB VORTAC.

NOTE: **Rwy 26R**, tree 1284' from DER, 778' left of centerline, 52' AGL/561' MSL.

MONTGOMERY FIELD (MYF)

AMDT 3A 10210 (FAA)

TAKE-OFF MINIMUMS: **Rwy 5**, 1500-2 or std. with a min. climb of 290' per NM to 1700.

DEPARTURE PROCEDURE: **Rwys 5, 10L/R**, climbing right turn. **Rwys 28L/R**, climbing left turn. **All aircraft** climb direct to MZB VORTAC. Aircraft departing MZB R-090 CW R-360 climb on course. All others climb in MZB holding pattern (W, right turns, 075° inbound) to cross MZB VORTAC at or above 1800.

NOTE: **Rwy 5**, trees and bushes beginning 244' from DER, 161' left of centerline, up to 99' AGL/524' MSL. Tree 1287' from DER, 103' right of centerline, up to 49' AGL/474' MSL. **Rwy 23**, tree, flagpole, and transmission towers beginning 1594' from DER, 82' right of centerline, up to 125' AGL/545' MSL. Transmission towers beginning 2627' from DER, 414' left of centerline up to 125' AGL/524' MSL. **Rwy 10L**, trees beginning 230' from DER, 494' left of centerline, up to 57' AGL/486' MSL. Trees beginning 1172' from DER, 591' right of centerline, up to 69' AGL/488' MSL. **Rwy 10R**, rod on electrical equipment 40' from DER, 66' left of centerline, 7' AGL/426' MSL. Trees beginning 2107' from DER, 199' right of centerline, up to 69' AGL/488' MSL. **Rwy 28L**, bushes and poles beginning 35' from DER, 160' right of centerline, up to 37' AGL/451' MSL. Trees beginning 1008' from DER, 7' left of centerline, up to 37' AGL/451' MSL. **Rwy 28R**, bushes, trees, and poles beginning 34' from DER, 162' left of centerline, up to 38' AGL/451' MSL. Trees, signs, and poles beginning 768' from DER, 98' right of centerline, up to 67' AGL/488' MSL.

SAN DIEGO, CA (CON'T)

SAN DIEGO INTL (SAN)

AMDT 7 11349 (FAA)

TAKE-OFF MINIMUMS: **Rwy 9**, 400-1¼ w/min. climb of 290' per NM to 900. **Rwy 27**, 400-2½ or std. w/min. climb of 353' per NM to 500.

DEPARTURE PROCEDURE: **Rwy 9**, climb heading 092° to 900, then climbing left turn direct MZB VORTAC. Thence...

Rwy 27, climb heading 272° to 900, then climbing right turn direct MZB VORTAC. Thence...

...Aircraft departing MZB VORTAC R-180 CW R-360 climb on course. All others climb in MZB VORTAC holding pattern (hold West, right turns, 075° inbound) to cross MZB VORTAC at or above 2300 before proceeding on course.

NOTE: **Rwy 9**, obstruction light, sign, and trees beginning 11' from DER, 258' left of centerline, up to 38' AGL/77' MSL. Antenna on building, pole, and lighted barrier beginning 18' from DER, 5' right of centerline, up to 35' AGL/50' MSL. Obstruction light on localizer 272' from DER, on centerline, 19' AGL/38' MSL. Vent on building, multiple buildings, and trees beginning 741' from DER, 104' right of centerline, up to 173' AGL/317' MSL. Electrical system, pole, multiple antennas on lighted buildings, and trees beginning 792' from DER, 135' left of centerline, up to 66' AGL/138' MSL. Buildings and trees beginning 5834' from DER, 19' right of centerline, up to 280' AGL/394' MSL. Lighted stack, poles, and trees beginning 1 NM from DER, 492' left of centerline, up to 132' AGL/419' MSL. **Rwy 27**, light pole 195' from DER, 348' right of centerline, 20' AGL/30' MSL. Obstruction light on DME 287' from DER, 315' left of centerline, 18' AGL/28' MSL. Trees beginning 638' from DER, 321' left of centerline, 52' AGL/62' MSL. Trees beginning 777' from DER, 163' right of centerline, 55' AGL/78' MSL. Light on flagpole 2517' from DER, 706' left of centerline, 99' AGL/118' MSL. Tower and trees beginning 2595' from DER, 15' right of centerline, 97' AGL/196' MSL. Trees beginning 4772' from DER, 532' left of centerline, 92' AGL/269' MSL. Building and trees beginning 5418' from DER, 96' right of centerline, 88' AGL/253' MSL. Trees beginning 1.7 NM from DER, 1301' left of centerline, 100' AGL/379' MSL.

31 MAY 2012 to 28 JUN 2012

31 MAY 2012 to 28 JUN 2012

12152

TAKE-OFF MINIMUMS AND (OBSTACLE) DEPARTURE PROCEDURES

TAKE-OFF MINIMUMS AND (OBSTACLE) DEPARTURE PROCEDURES

12152

SAN DIEGO/EL CAJON, CA

GILLESPIE FIELD (SEE)

AMDT 5 11041 (FAA)

TAKE-OFF MINIMUMS: **Rwy 9L**, 900-2 3/4 w/ min. climb of 400' per NM to 3600. **Rwy 9R**, 900-2 3/4 w/ min. climb of 405' per NM to 3600. **Rwy 17**, std. w/ min. climb of 465' per NM to 1900.

Rwy 27L, std. w/ min. climb of 495' per NM to 3600 or 2500-2 1/4 w/ min. climb of 411' per NM to 3600. **Rwy 27R**, std. w/ min. climb of 605' per NM to 3600 or 2500-2 w/ min. climb of 435' per NM to 3600. **Rwy 35**, std. w/ min. climb of 460' per NM to 2200.

DEPARTURE PROCEDURE: **Rwys 9L, 9R, 27L, 27R**, climbing right turn on heading 165° and MZB R-076 to MZB VORTAC.

Rwy 17, climb on heading 165° and MZB R-076 to MZB VORTAC. **Rwy 35**, climbing left turn on heading 165° and MZB R-076 to MZB VORTAC.

NOTE: **Rwy 9L**, rising terrain beginning 11' from DER, 202' left of centerline, up to 398' MSL. Vehicle on road beginning 604' from DER, 3' right of centerline, up to 17' AGL/450' MSL. Sign 739' from DER, 442' right of centerline, 40' AGL/448' MSL. Bridge 784' from DER, on centerline, 10' AGL/408' MSL. Building 916' from DER, 355' left of centerline, 40' AGL/448' MSL. Trees beginning 940' from DER, 28' left of centerline, up to 100' AGL/557' MSL. Poles beginning 1101' from DER, 153' right of centerline, 40' AGL/455' MSL. Poles beginning 1173' from DER, 314' left of centerline, up to 42' AGL/462' MSL. Trees beginning 1259' from DER, 66' right of centerline, up to 100' AGL/628' MSL. Building 1418' from DER, 421' left of centerline, 40' AGL/451' MSL.

Rwy 9R, poles beginning 921' from DER, 68' right of centerline, up to 50' AGL/442' MSL. Vehicle on road beginning 1544' from DER, 404' left of centerline, up to 17' AGL/450' MSL. Sign 1679' from DER, 25' right of centerline, 40' AGL/448' MSL. Buildings beginning 1855' from DER, 772' left of centerline, up to 40' AGL/450' MSL. Trees beginning 1879' from DER, 65' left of centerline, up to 100' AGL/691' MSL. Poles beginning 2112' from DER, 263' left of centerline, up to 42' AGL/462' MSL. Trees beginning 2490' from DER, 258' right of centerline, up to 100' AGL/505' MSL. **Rwy 17**, fence 14' from DER, 42' right of centerline, 10' AGL/393' MSL. Poles beginning 50' from DER, 33' right of centerline, up to 40' AGL/428' MSL. Buildings beginning 240' from DER, 290' right of centerline, up to 70' AGL/463' MSL. Poles beginning 266' from DER, 150' left of centerline, up to 40' AGL/440' MSL. Antenna on hanger 282' from DER, 325' left of centerline, 40' AGL/421' MSL. Trees beginning 390' from DER, 377' right of centerline, up to 100' AGL/473' MSL. Buildings beginning 670' from DER, 57' left of centerline, 40' AGL/429' MSL. Trees beginning 1068' from DER, 54' left of centerline, up to 100' AGL/472' MSL. **Rwy 27L**, aircraft on taxiway 9' from DER, 195' left of centerline, 15' AGL/384' MSL. Trees beginning 1548' from DER, 700' right of centerline, up to 100' AGL/453' MSL. Trees beginning 2943' from DER, 464' left of centerline, up to 60' AGL/470' MSL.

Rwy 27R, trees beginning 179' from DER, 54' right of centerline, up to 100' AGL/453' MSL. Poles beginning 316' from DER, 161' right of centerline, 40' AGL/390' MSL. Railroad 511' from DER, 412' left of centerline, 23' AGL/379' MSL. Obstruction light on RR signal 799' from DER, 83' left of centerline, 30' AGL/390' MSL. Trees beginning 2069' from DER, 71' left of centerline, up to 100' AGL/470' MSL. Pole 2142' from DER, 95' left of centerline, 30' AGL/420' MSL.

Rwy 35, poles beginning 50' from DER, 29' right of centerline, up to 50' AGL/431' MSL. Buildings beginning 61' from DER, 134' right of centerline, up to 10' AGL/388' MSL. Trees beginning 179' from DER, 67' right of centerline, up to 100' AGL/447' MSL. Pole 593' from DER, 336' left of centerline, 35' AGL/396' MSL. Trees beginning 670' from DER, 118' left of centerline, up to 100' AGL/439' MSL.

SAN LUIS OBISPO, CA

SAN LUIS COUNTY RGNL

TAKE-OFF MINIMUMS: **Rwys 7, 25**, NA. **Rwy 11**, 1800-2 or std. with a min. climb of 320' per NM to 2300. **Rwy 29**, 1200-2 or std. with a min. climb of 390' per NM to 1700.

DEPARTURE PROCEDURE: **Rwy 11**, climb runway heading to 900, then climbing right turn direct MQO VORTAC. **Rwy 29**, climb via runway heading and MQO R-050 to MQO VORTAC. All aircraft departing on MQO R-130 CW R-320 climb on course. All others continue climbing in MQO holding pattern (SE, left turns, 306° inbound) to cross MQO VORTAC at or above 4000.

SAN NICOLAS ISLAND NOLF (NSI)

SAN NICOLAS ISLAND, CA

Rwy 12: Diverse departures authorized 300° to 120° CW.

Rwy 30: Diverse departures not authorized. **Rwy 30** climb heading 300° to 1300', then turn right to assigned heading.

Rwy 12-30: Obstacle identification surface begins 10 ft above departure end of runway.

TKOFF OBSTACLES: **Rwy 30**: 1076' MSL (589' AGL)

Tower, 2805' past DER, 1882' left of centerline.

SANTA ANA, CA

JOHN WAYNE AIRPORT-ORANGE COUNTY (SNA)

AMDT 5 09239 (FAA)

DEPARTURE PROCEDURE: **Rwys 1L, 1R**, climbing left turn direct SLI VORTAC. **Rwys 19L, 19R**, climbing right turn direct SLI VORTAC. All aircraft climb in SLI holding pattern (hold South, left turns, 351° inbound) to cross SLI VORTAC at or above MEA for direction of flight before proceeding on course.

NOTE: **Rwy 1L**, multiple trees beginning 466' from DER, 553' left of centerline, up to 85' AGL/127' MSL. Light pole 94' from DER, 490' left of centerline, 21' AGL/63' MSL. Obstruction light on DME 497' from DER, 625' right of centerline, 13' AGL/55' MSL. **Rwy 1R**, obstruction light on DME 497' from DER, 125' right of centerline, 13' AGL/55' MSL. Tree 1745' from DER, 309' right of centerline, 51' AGL/85' MSL. Light pole 1104' from DER, 307' right of centerline, 34' AGL/68' MSL. **Rwy 19R**, WSK on HGR 536' from DER, 605' left of centerline, 44' AGL/92' MSL. Multiple trees beginning 289' from DER, 500' right of centerline, up to 52' AGL/108' MSL. Light poles beginning 204' from DER, 490' right of centerline, up to 35' AGL/85' MSL. Tree 1574' from DER, 765' left of centerline, 59' AGL/113' MSL.

31 MAY 2012 to 28 JUN 2012

31 MAY 2012 to 28 JUN 2012

12152

TAKE-OFF MINIMUMS AND (OBSTACLE) DEPARTURE PROCEDURES

TAKE-OFF MINIMUMS AND (OBSTACLE) DEPARTURE PROCEDURES

12152

SANTA BARBARA, CA

SANTA BARBARA MUNI (SBA)
AMDT 7A 11321 (FAA)

TAKE-OFF MINIMUMS: **Rwy 7**, std. w/min. climb of 334' per NM to 1200, or 1900-2½ for climb in visual conditions. **Rwys 33L, 33R** NA-ATC.

DEPARTURE PROCEDURE: **Rwy 7**, climbing right turn via heading 170°; thence..., or for climb in visual conditions: cross Santa Barbara Muni Airport southbound at or above 1900, thence... **Rwys 15L, 15R**, climb via heading 152°; thence... **Rwy 25**, climbing left turn via heading 155°; thence...

...then via RZS R-185 to GOLET INT, climb in GOLET INT holding pattern (SE, right turns, 307° inbound), to cross GOLET INT at or above MEA for route of flight, before proceeding on course.

NOTE: **Rwy 7**, obstruction light on DME antenna, road and numerous trees beginning 350' from DER, 101' right of centerline, up to 55' AGL/74' MSL. Antennas, poles, tower, and numerous trees beginning 194' from DER, 11' left of centerline, up to 79' AGL/98' MSL. Temporary crane 1.19 NM from DER, 1800' left of centerline, 220' AGL/260' MSL. **Rwy 15L**, numerous trees beginning 1242' from DER, 119' right of centerline, up to 100' AGL/159' MSL. **Rwy 15R**, sign and numerous trees beginning 29' from DER, 94' right of centerline, up to 100' AGL/159' MSL. Tree 1325' from DER, 243' left of centerline, 19' AGL/59' MSL. **Rwy 25**, trees beginning 1999' from DER, 793' right of centerline, up to 67' AGL/86' MSL.

SANTA MARIA, CA

SANTA MARIA PUB/CAPT G ALLAN
HANCOCK FLD (SMX)
AMDT 6 12124 (FAA)

TAKE-OFF MINIMUMS: **Rwy 20**, NA-obstacles. **Rwy 12**, 400-2½ w/min. climb of 287' per NM to 1500 or std. w/min. climb of 388' per NM to 1200.

DEPARTURE PROCEDURE: **Rwy 2**, climbing left turn; **Rwy 12**, climbing left turn (do not exceed 230 KIAS until established north westbound to GLJ VOR). **Rwy 30**, climb heading 294°.

All aircraft: climb direct GLJ VOR, then continue climb to airway MEA via GLJR-300 to intercept MQOR-137 to MQO VORTAC. Cross MQO VORTAC at or above MEA/MCA for assigned route of flight.

NOTE: **Rwy 2**, trees beginning 541' from DER, 153' right of centerline, up to 108' AGL/332' MSL. Tree 1018' from DER, 246' left of centerline, 34' AGL/254' MSL. **Rwy 12**, trees beginning 988' from DER, 271' right of centerline, up to 83' AGL/402' MSL. Trees beginning 54' from DER, 277' left of centerline, up to 84' AGL/409' MSL.

SANTA MONICA, CA

SANTA MONICA MUNI

TAKE-OFF MINIMUMS: **Rwy 3**, std. w/min. climb of 325' per NM to 1100, or 1200-3 for climb in visual conditions.

Rwy 21, std. w/min. climb of 215' per NM to 4000, or 1200-3 for climb in visual conditions.

DEPARTURE PROCEDURE: **Rwy 3**, climbing right turn to 5000 via SMO R-210 and LAX R-276 to SADDE INT, or for climb in visual conditions: cross SMO VOR/DME at or above 1200 then continue climb to 5000 via SMO R-210 and LAX R-276 to SADDE INT. **Rwy 21**, climb to 5000 via SMO R-210 and LAX R-276 to SADDE INT, or for climb in visual conditions: cross SMO VOR/DME at or above 1200, then climb to 5000 via SMO R-210 and LAX R-276 to SADDE INT.

NOTE: **Rwy 3**, multiple signs and trees beginning 19' from departure end of runway, 300' right of centerline, up to 36' AGL/211' MSL, tower 5488' from departure end of runway, 1902' right of centerline, 150' AGL/325' MSL, light standard 19' from departure end of runway, 176' right of centerline, 6' AGL/181' MSL, multiple trees beginning 325' from departure end of runway, 227' left of centerline, up to 34' AGL/209' MSL, sign 56' from departure end of runway, 185' left of centerline, 6' AGL/181' MSL. **Rwy 21**, multiple trees and poles beginning 140' from departure end of runway, 247' right of centerline, up to 81' AGL/196' MSL, antenna on building 280' from departure end of runway, 486' right of centerline, 35' AGL/150' MSL, VOR 101' from departure end of runway, 255' left of centerline, 7' AGL/122' MSL.

SANTA YNEZ, CA

SANTA YNEZ

TAKE-OFF MINIMUMS: **Rwy 8**, CAT C,D 1100-2 or std. with a min. climb of 280' per NM to 2000.

DEPARTURE PROCEDURE: **Rwy 8**, turn left, climb to 6000 heading 260° and V27 to ORCUT Int. **Rwy 26**, climb to 6000 via RZS R-275 and V27 to ORCUT Int.

SHAFTER, CA

SHAFTER-MINTER FIELD

DEPARTURE PROCEDURE: **Rwys 12, 17**, turn right. **Rwys 30, 35**, turn left. Climb westbound to 4000 via V248. Westbound aircraft continue at 4000 on course. Eastbound aircraft turn right at 4000 direct EHF VORTAC.

TORRANCE, CA

ZAMPERINI FIELD (TOA)

AMDT 1A 10210 (FAA)

TAKE-OFF MINIMUMS: **Rwy 11L**, 400-2 or std. w/min. climb of 325' per NM to 600. **Rwy 11R**, 400-2½ or std. with a min. climb of 325' per NM to 600.

DEPARTURE PROCEDURE: **Rwys 29L, 29R**, climb runway heading. **Rwys 11L, 11R**, climbing left turn to heading 290°. Both departures climb to 3000, intercept LAX R-170 to LIMBO Int.

TUSI AHP (KHGT),

HUNTER LIGGETT, CAAMDT 3, 08269

Helicopter use only. Climb on a heading between 010° CW to 190° from heliport (or a minimum climb rate of 530' per NM to 7800 for all other courses).

31 MAY 2012 to 28 JUN 2012

31 MAY 2012 to 28 JUN 2012

12152

TAKE-OFF MINIMUMS AND (OBSTACLE) DEPARTURE PROCEDURES

TAKE-OFF MINIMUMS AND (OBSTACLE) DEPARTURE PROCEDURES

12152

TWENTYNINE PALMS, CA

TWENTYNINE PALMS

TAKE-OFF MINIMUMS: **Rwy 17, NA. Rwy 8, 26, 35**, std. with a min. climb of 280' per NM to 5500.
 DEPARTURE PROCEDURE: **Rwys 8, 26, 35**, turn right direct TNP VORTAC. Eastbound on V264 continue climb on course. All others climb in TNP holding pattern (E. left turns, 255° inbound) to cross TNP VORTAC at or above 6000 before proceeding on course. Northeast bound on V514-538 cross TNP VORTAC at or above 7900.

TWENTYNINE PALMS SELF (NXP)

TWENTYNINE PALMS, CA 07354
 Diverse departure not authorized.

UPLAND, CA

CABLE (CCB)

AMDT 3 10210 (FAA)

TAKE-OFF MINIMUMS: **Rwy 6**, 300-1¾ or std. with a min. climb of 240' per NM to 1900.
 DEPARTURE PROCEDURE: **Rwy 6**, climbing right turn. **Rwy 24**, climbing left turn. All aircraft climb direct PDZ VORTAC and hold (East, right turns, 258° inbound), continue climb-in-hold to MEA for route of flight.

NOTE: **Rwy 24**, sign, 45' from DER, 96' left of centerline, 8' AGL/1396' MSL. Trees beginning 250' from DER, 417' right of centerline, up to 30' AGL/1429' MSL. **Rwy 6**, trees beginning 14' from DER, 78' left of centerline, up to 30' AGL/1669' MSL. Sign 27' from DER, 98' right of centerline, 8' AGL/1448' MSL. Sign 29' from DER, 102' left of centerline, 8' AGL/1451' MSL. Pole 109' from DER, 221' right of centerline, 40' AGL/1470' MSL. Poles beginning 123' from DER, 178' left of centerline, up to 47' AGL/1491' MSL. Trees beginning 160' from DER, 15' right of centerline, up to 30' AGL/1506' MSL. Obstruction light on building 768' from DER, 246' left of centerline, 39' AGL/1489' MSL. Tree 2785' from DER, on centerline, 30' AGL/1524' MSL.

VAN NUYS, CA

VAN NUYS (VNY)

AMDT 4 10042 (FAA)

TAKE-OFF MINIMUMS: **Rwys 16L, 16R**, std. w/ min. climb of 370' per NM to 7100, or 1500-2½ for climb in visual conditions. **Rwys 34L, 34R**, std. w/ min. climb of 370' per NM to 7100, or 1500-2½ for climb in visual conditions.

DEPARTURE PROCEDURE: **Rwys 16L, 16R**, climbing left turn heading 050° to intercept VNY R-095 to DARTS/INT and hold West, Right turns, 095° inbound, continue climb-in-hold to 7100', before proceeding on course. Aircraft Eastbound via V186, Southeastbound via V459, climb on course or for climb in visual conditions cross Van Nuys airport at or above 4500 before proceeding on course. **Rwys 34L, 34R**, climbing right turn heading 125° to intercept VNY R-095 to DARTS/INT, and hold West, Right turns 095° inbound, continue climb-in-hold to 7100, before proceeding on course. Aircraft Eastbound via V186, Southeastbound via V459, climb on course or for climb in visual conditions cross Van Nuys airport at or above 4500 before proceeding on course.

NOTE: **Rwy 16L**, light on hangar 713' from DER 361' left of centerline, 27' AGL/798' MSL. **Rwy 16R**, hangar 209' from DER, 516' right of centerline, 9' AGL/755' MSL. Flagpole 570' from DER, 549' right of centerline, 15' AGL/761' MSL. Building 941' from DER, 599' left of centerline, 28' AGL/774' MSL. Multiple trees beginning 1129' from DER, left and right of centerline, up to 72' AGL/818' MSL. **Rwy 34L**, blast fence 169' from DER, 405' left of centerline, 10' AGL/812' MSL. Obstruction light on blast fence, 241' from DER, 195' left of centerline, 17' AGL/819' MSL. Multiple trees beginning 325' from DER, 549' right of centerline, up to 119' AGL/921' MSL. Railroad 305' from DER, 369' right of centerline, 30' AGL/832' MSL. Building 424' from DER, 589' right of centerline, 29' AGL/831' MSL. Antenna on building 450' from DER 462' left of centerline, 15' AGL/817' MSL. Pole 1376' from DER, 779' left of centerline, 68' AGL/870' MSL. Multiple trees beginning 828' from DER, 15' left of centerline, 78' AGL/907' MSL. **Rwy 34R**, railroad 305' from DER, 5' right of centerline, 23' AGL/832' MSL. Multiple trees beginning 325' from DER, 174' right of centerline, up to 122' AGL/921' MSL. Building 424' from DER, 214' right of centerline, 32' AGL/831' MSL. Multiple trees beginning 781' from DER, 110' left of centerline 62' AGL/891' MSL.

31 MAY 2012 to 28 JUN 2012

31 MAY 2012 to 28 JUN 2012

12152

TAKE-OFF MINIMUMS AND (OBSTACLE) DEPARTURE PROCEDURES

VANDENBERG AFB (KVBG)

LOMPOC, CA10042

Rwy 12: 6500-3 or standard with a minimum climb rate of 300'/NM to 8800, cross DER at or above 35' AGL/404' MSL.

Rwy 30: 6400-3 or standard with a minimum climb rate of 270'/NM to 8800, cross DER at or above 35' AGL/274' MSL.

TAKE-OFF OBSTACLES: Rwy 12: trees 40' AGL/479' MSL, 3814' from DER, 1126' right of centerline. Road with possible vehicles 10' AGL/443' MSL, 2961' from DER, 360' right of centerline. Trees 200' AGL/594' MSL, 1.3 NM from DER, 795' right of centerline. Trees 200' AGL/600' MSL, 1.1 NM from DER, 2250' right of centerline. Trees 200' AGL/604' MSL, 1.0 NM from DER, 90' right of centerline. Trees 200' AGL/600' MSL, 1.4 NM from DER, 2665' left of centerline. Trees 200' AGL/620' MSL, 6051' from DER, 2044' left of centerline. Trees 50' AGL/1375' MSL, 3.2 NM from DER, 5.0 NM left of centerline. Trees 107' AGL/546' MSL, 4548' from DER, 1479' right of centerline.

Rwy 12/30 VCOA: For climb in Visual Conditions 2200-3, remain within 6.5 NM from airport, cross Vandenberg airport at or above 2400, then proceed as filed. Maximum airspeed 250 kts.

Note: Aircrews must notify ATC prior to executing this VCOA procedure.

VICTORVILLE, CA

SOUTHERN CALIFORNIA LOGISTICS

TAKE-OFF MINIMUMS: Rwy 3, std. w/ min. climb of 266' per NM to 3500 or 5300-3 for climb in visual conditions.

DEPARTURE PROCEDURE: Rwy 3, climbing left turn heading 220°; thence. . . or for climb in visual conditions cross Southern California Logistics Airport at or above 8000 MSL before proceeding on course. Rws 17, 21, climbing right turn heading 325°; thence. . . Rwy 35, climbing left turn heading 220°; thence. . .

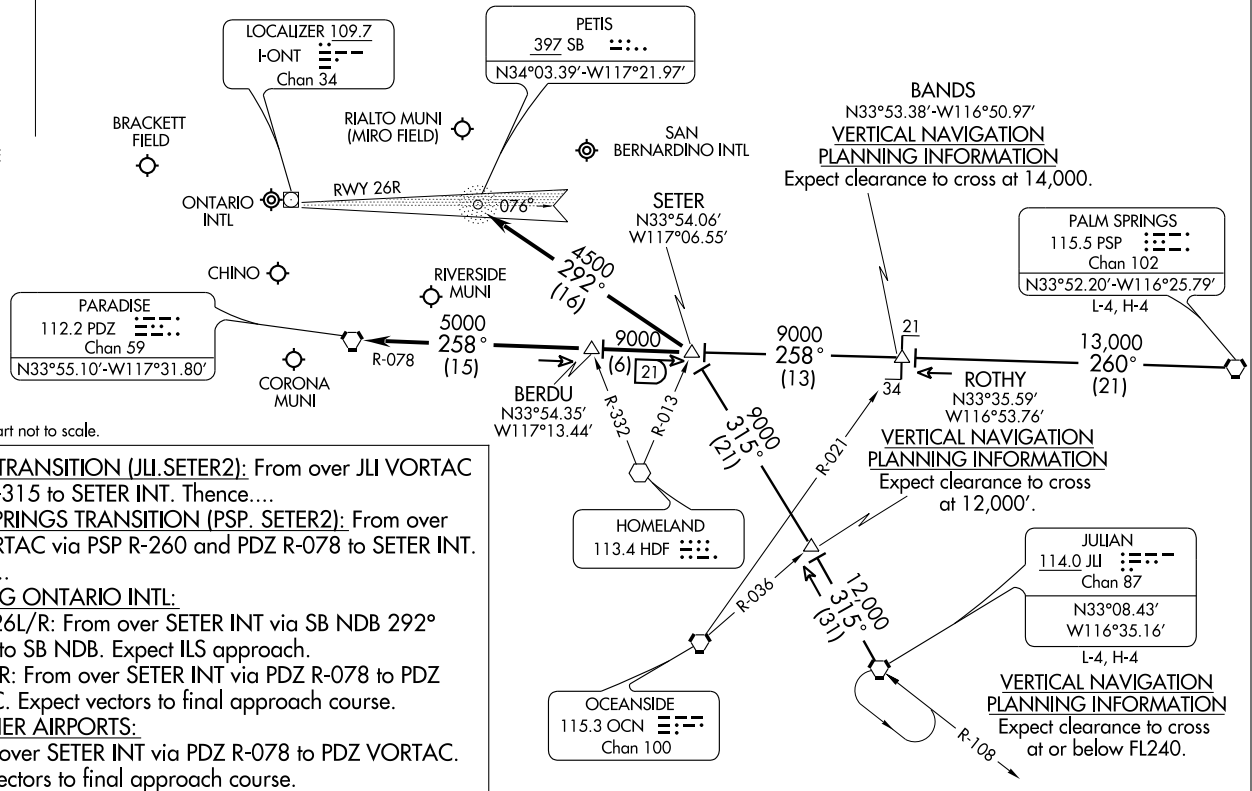
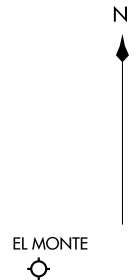
. . . All aircraft climb via VCV VOR/DME R-269 to ETHER INT. Continue climb in ETHER holding pattern (NE PMD VORTAC, left turn, 247° inbound) to MEA for direction of flight.

NOTE: Rwy 3, pole 408' from departure end of runway, 511' right of centerline, 29' AGL/2873' MSL. Terrain beginning 153' from departure end of runway, 41' right of centerline, up to 3196' MSL. Terrain beginning 17' from departure end of runway, 104' left of centerline, up to 2855' MSL. Tree 2.1 NM from departure end of runway, 3735' right of centerline, 50' AGL/3269' MSL. Rwy 17, sign 248' from departure end of runway, 277' left of centerline, 14' AGL/2896' MSL. Antenna on building 701' from departure end of runway, 203' left of centerline, 20' AGL/2902' MSL.

31 MAY 2012 to 28 JUN 2012

31 MAY 2012 to 28 JUN 2012

SOCAL APP CON
119.65 379.25
BRACKETT ATIS 124.4
CHINO ATIS 125.85
EL MONTE ATIS 118.75
ONTARIO ATIS 124.25
RIVERSIDE ATIS 128.8



JULIAN TRANSITION (JLI,SETER2): From over JLI VORTAC via JLI R-315 to SETER INT. Thence....
PALM SPRINGS TRANSITION (PSP, SETER2): From over PSP VORTAC via PSP R-260 and PDZ R-078 to SETER INT. Thence....
LANDING ONTARIO INTL:
Rwy 26L/R: From over SETER INT via SB NDB 292° bearing to SB NDB. Expect ILS approach.
 Rwy 8L/R: From over SETER INT via PDZ R-078 to PDZ VORTAC. Expect vectors to final approach course.
ALL OTHER AIRPORTS:
From over SETER INT via PDZ R-078 to PDZ VORTAC. Expect vectors to final approach course.

ST-965 (FAA)

ONTARIO, CALIFORNIA

ONTARIO, CALIFORNIA

ARRIVAL ROUTE DESCRIPTION

HECTOR TRANSITION (HEC.ZIGGY4): From over HEC VORTAC via HEC R-211 and PDZ R-030 to ZIGGY INT. Thence

PALMDALE TRANSITION (PMD.ZIGGY4): From over PMD VORTAC via PMD R-104 to HITOP INT, then via HDF R-332 to ZIGGY INT. Thence

SHAFTER TRANSITION (EHF.ZIGGY4): From over EHF VORTAC via EHF R-128 and PMD R-295 to PMD VORTAC, then via PMD R-104 to HITOP INT, then via HDF R-332 to ZIGGY INT. Thence

TULE TRANSITION (TTE.ZIGGY4): From over TTE VOR/DME via TTE R-147 and PMD R-295 to PMD VORTAC, then via PMD R-104 to HITOP INT, then via HDF R-332 to ZIGGY INT. Thence

LANDING ONTARIO INTL:

. . . . RWY 8L/R: From over ZIGGY INT via PDZ R-030 to PDZ VORTAC; expect radar vectors to final approach course.

. . . . RWY 26 L/R: From over ZIGGY INT via direct PETIS NDB or PDZ R-030 to PETIS INT; expect radar vectors for ILS approach.

ALL OTHER AIRPORTS:

. . . . From over ZIGGY INT via PDZ R-030 to PDZ VORTAC; expect radar vectors to final approach course.

LOST COMMUNICATIONS: For Rialto, California, NDB-A approach, proceed from PDZ VORTAC via PDZ R-078 to EDITS INT, maintain 4200'.

SW-3, 31 MAY 2012 to 28 JUN 2012

SW-3, 31 MAY 2012 to 28 JUN 2012