

LOC/DME I-AIK 109.9 Chan 36	APP CRS 066°	Rwy Idg 5500 THRE 515 Apt Elev 529
---	------------------------	---

ILS or LOC/DME RWY 7

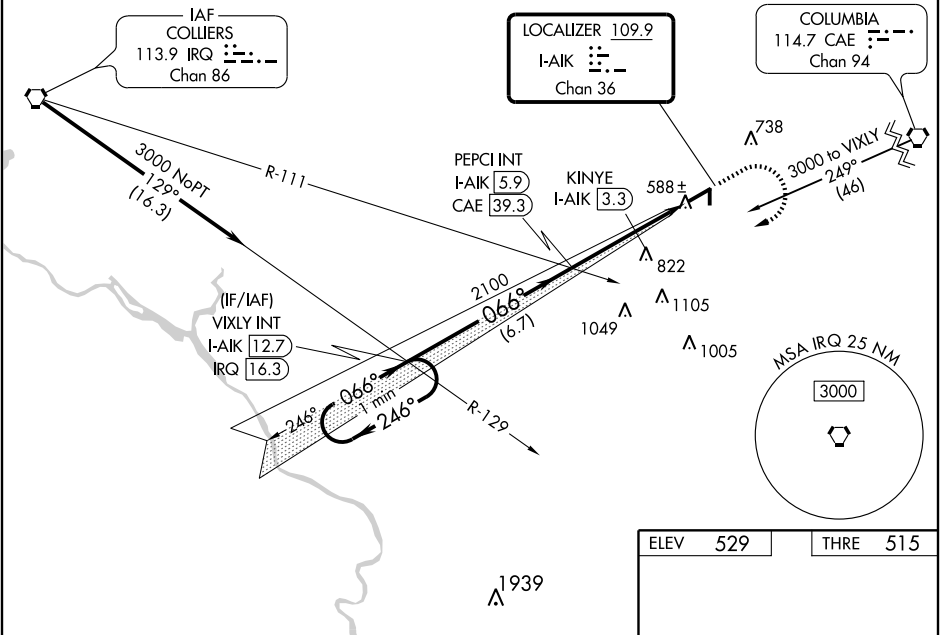
AIKEN MUNI (AIK)

VDP NA with Augusta Rgnl at Bush Field altimeter setting. When local altimeter setting not received; use Augusta Rgnl at Bush Field altimeter setting and increase all DA 104 feet and all MDA 120 feet; increase S-ILS 7 all Cats and Circling Cat D visibilities ¼ mile and S-LOC 7 Cats C and D visibilities ⅓ mile.

MISSED APPROACH: Climb to 1100 then climbing right turn to 3000 on heading 276° and I-AIK SW course (246°) to VIXLY INT/I-AIK 12.7 DME and hold.

AWOS-3 118.025	AUGUSTA APP CON * 119.15 284.625	CLNC DEL 126.075	UNICOM 122.8 (CTAF) 0
--------------------------	--	----------------------------	---------------------------------

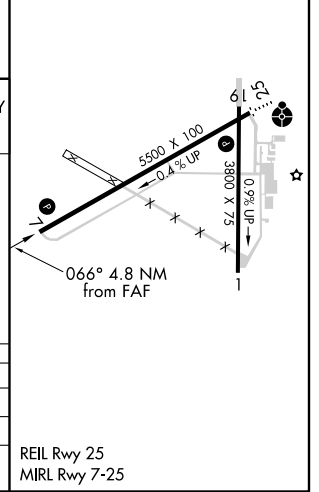
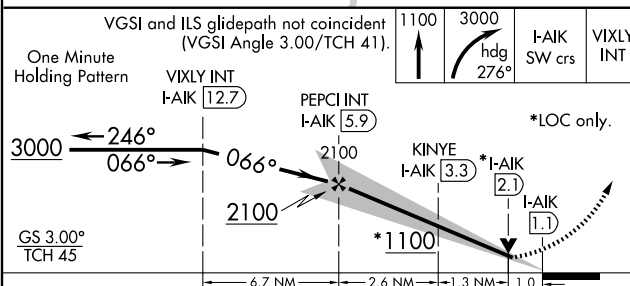
Procedure NA for arrivals on IRQ VORTAC airway radials 084 CW 174.



SE-2, 31 MAY 2012 to 28 JUN 2012

SE-2, 31 MAY 2012 to 28 JUN 2012

ELEV 529	THRE 515
----------	----------




CATEGORY	A	B	C	D
S-ILS 7		715-¾	200 (200-¾)	
S-LOC 7		840-1	325 (400-1)	
CIRCLING	980-1 451 (500-1)	1000-1 471 (500-1)	1000-1½ 471 (500-1½)	1080-2 551 (600-2)

NDB RWY 25

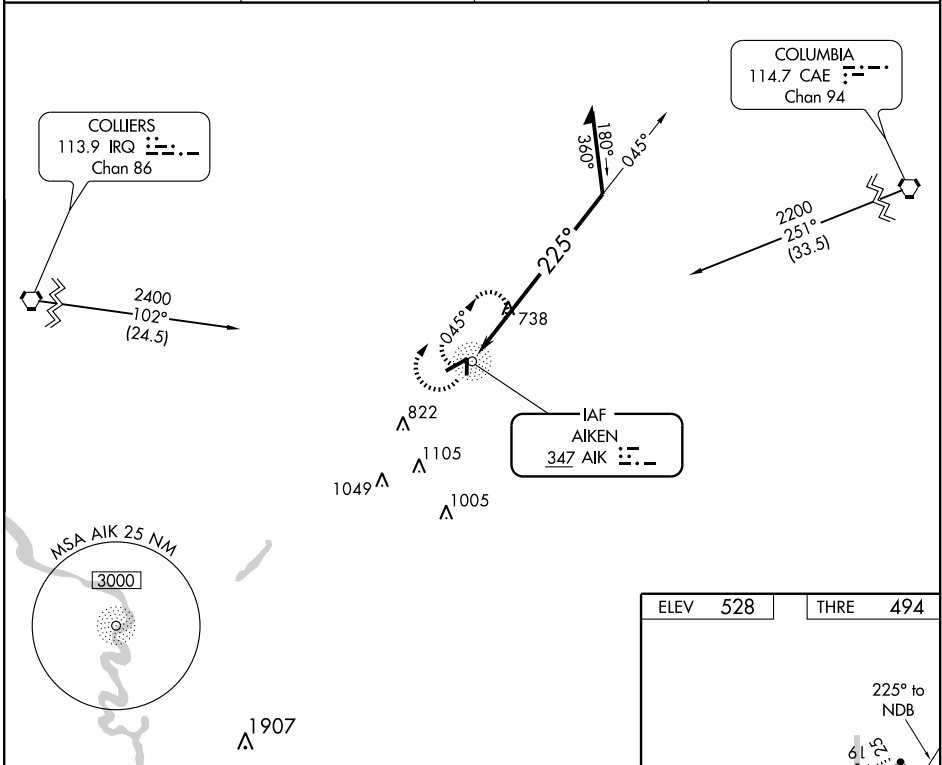
AIKEN MUNI (AIK)

NDB AIK 347	APP CRS 225°	Rwy Idg THRE Apt Elev	5500 494 528
-----------------------	------------------------	-----------------------------	---

NA Inoperative table does not apply to Cat C/D when using Augusta Rgnl at Bush Field altimeter setting. When local altimeter setting not received, use Augusta Rgnl at Bush Field altimeter setting and increase all MDA 120 feet and increase S-25 and Circling Cat B visibility to 1, Cat C/D visibility to 2½. For inoperative ODALS, increase S-25 Cat C/D visibility to 2. Visibility reduction by helicopters NA.

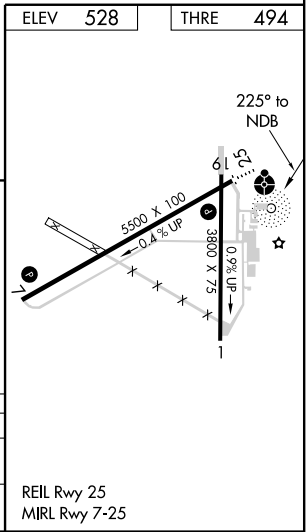
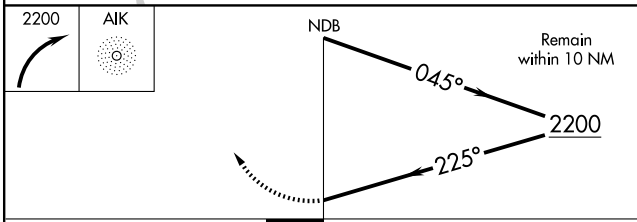
ODALS

MISSED APPROACH: Climbing right turn to 2200 in AIK NDB holding pattern.

AWOS-3 118.025	AUGUSTA APP CON * 119.15 284.625	CLNC DEL 126.075	UNICOM 122.8 (CTAF)
--------------------------	--	----------------------------	-------------------------------



SE-2, 31 MAY 2012 to 28 JUN 2012

SE-2, 31 MAY 2012 to 28 JUN 2012




CATEGORY	A	B	C	D
S-25	1180-¾	686 (700-¾)	1180-1⅞	686 (700-1⅞)
CIRCLING	1180-1	652 (700-1)	1180-2	652 (700-2)

WAAS CH 50301 W25A	APP CRS 246°	Rwy Ldg THRE Apt Elev 5500 494 529
---------------------------------	------------------------	--

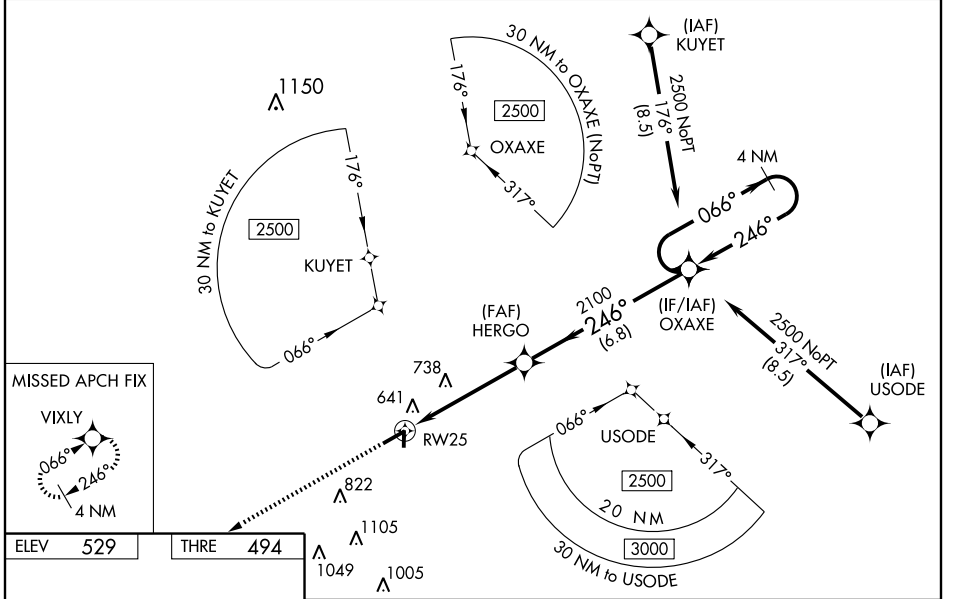
RNAV (GPS) RWY 25

AIKEN MUNI (AIK)

⚠ Baro-VNAV NA when using Augusta Rgnl at Bush Field altimeter setting. For uncompensated Baro-VNAV systems, LNAV/VNAV NA below -16°C (4°F) or above 40°C (104°F). DME/DME RNP-0.3 NA. Visibility reduction by helicopters NA. VDP NA with Augusta Rgnl at Bush Field altimeter setting. When local altimeter setting not received, use Augusta Rgnl at Bush Field altimeter setting and increase all DA 104 feet and all MDA 120 feet; increase LPV all Cats visibility ¼ mile, LNAV/VNAV all Cats and LNAV Cats C and D ¾ mile and Circling Cat C ½ mile and Cat D ¼ mile. For inoperative ODALS, increase LNAV/VNAV all Cats to 1 mile and LNAV Cat D to 1 ½ mile. For inoperative ODALS when local altimeter setting not received, use Augusta Rgnl at Bush Field altimeter setting and increase visibilities LPV all Cats to 1 ½ mile, LNAV/VNAV all Cats to 1 ¾ mile and LNAV Cats C and D to 1 ½ mile.

ODALS
 MISSED APPROACH:
 Climb to 3000 direct VIXLY and hold.

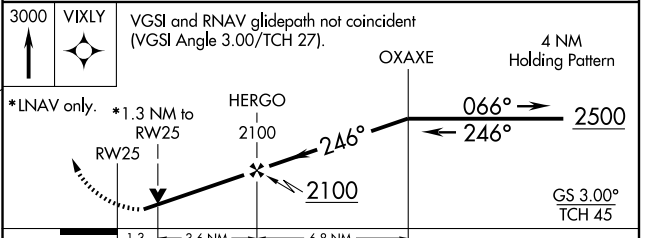
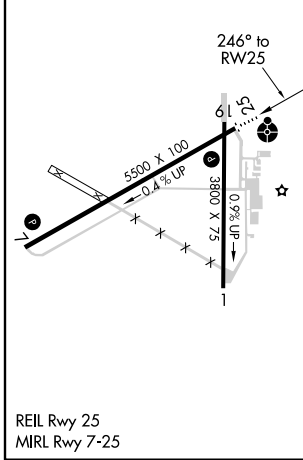
AWOS-3 118.025	AUGUSTA APP CON * 119.15 284.625	CLNC DEL 126.075	UNICOM 122.8 (CTAF) 
--------------------------	--	----------------------------	---



SE-2, 31 MAY 2012 to 28 JUN 2012

SE-2, 31 MAY 2012 to 28 JUN 2012

ELEV 529	THRE 494
----------	----------



CATEGORY	A	B	C	D
LPV DA		744-¾	250 (300-¾)	
LNAV/VNAV DA		802-7/8	308 (300-7/8)	
LNAV MDA	940-¾	446 (500-¾)	940-1/8	446 (500-1/8)
CIRCLING	980-1 451 (500-1)	1000-1 471 (500-1)	1000-1½ 471 (500-1½)	1080-2 551 (600-2)

WAAS CH 90301 W07A	APP CRS 066°	Rwy Idg THRE Apt Elev	5500 515 529
---------------------------------	------------------------	-----------------------------	---

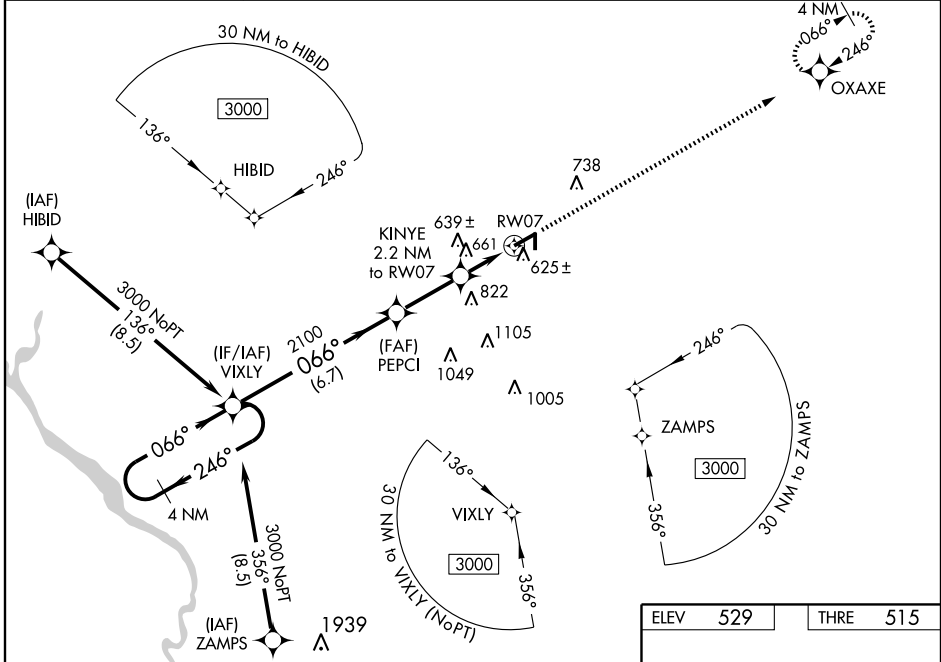
RNAV (GPS) RWY 7

AIKEN MUNI (AIK)

⚠ Baro-VNAV NA when using Augusta Rgnl at Bush Field altimeter setting. For uncompensated Baro-VNAV systems, LNAV/VNAV NA below -16°C (4°F) or above 40°C (104°F). DME/DME RNP-0.3 NA. VDP NA with Augusta Rgnl at Bush Field altimeter setting. When local altimeter setting not received, use Augusta Rgnl at Bush Field altimeter setting and increase all DA 104 feet and all MDA 120 feet; increase LPV all Cats visibility ¼ mile, LNAV/VNAV all Cats visibility ½ mile, and LNAV Cats C and D visibilities ¾ mile and Circling Cat D visibility ¼ mile.

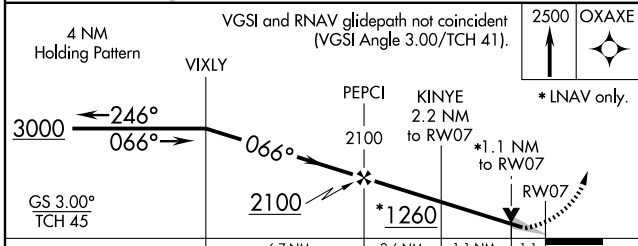
MISSED APPROACH:
Climb to 2500 direct OXAXE and hold.

AWOS-3 118.025	AUGUSTA APP CON * 119.15 284.625	CLNC DEL 126.075	UNICOM 122.8 (CTAF)
--------------------------	--	----------------------------	-------------------------------



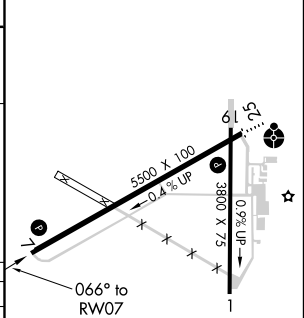
SE-2, 31 MAY 2012 to 28 JUN 2012

SE-2, 31 MAY 2012 to 28 JUN 2012



ELEV	529	THRE	515
------	-----	------	-----

CATEGORY	A	B	C	D
LPV DA		715-¾	200 (200-¾)	
LNAV/VNAV DA		786-⅞	271 (300-⅞)	
LNAV MDA	920-1	405 (400-1)	920-1½	405 (400-1½)
CIRCLING	980-1 451 (500-1)	1000-1 471 (500-1)	1000-1½ 471 (500-1½)	1080-2 551 (600-2)



REIL Rwy 25
MIRL Rwy 7-25

AIKEN, SOUTH CAROLINA

AL-5197 (FAA)

VORTAC IRQ 113.9 Chan 86	APP CRS 102°	Rwy Idg THRE Apt Elev 528	N/A N/A 528
--	------------------------	---	--

VOR/DME-A

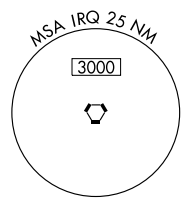
AIKEN MUNI(AIK)

NA When local altimeter setting not received, use Augusta Rgnl at Bush Field altimeter setting and increase all MDA 120 feet and increase Cat D visibility ¼ mile.

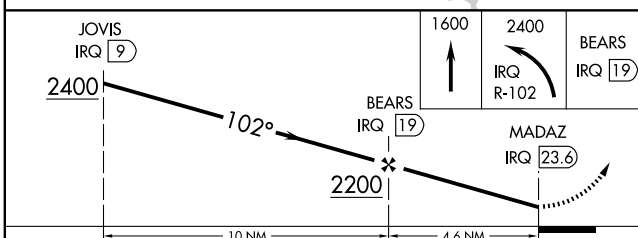
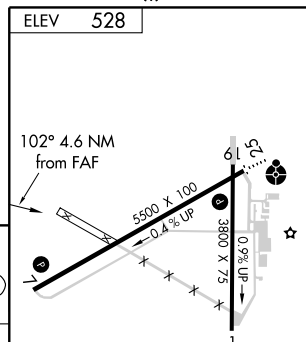
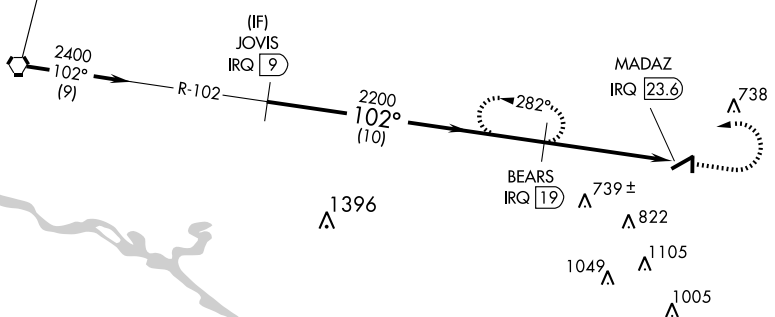
MISSED APPROACH: Climb to 1600 then climbing left turn to 2400 on IRQ VORTAC R-102 to BEARS/IRQ 19 DME and hold.

AWOS-3 118.025	AUGUSTA APP CON* 119.15 284.625	CLNC DEL 126.075	UNICOM 122.8 (CTAF) 0
--------------------------	---	----------------------------	--

Procedure NA for arrivals at IRQ VORTAC on airway radials 062 CW 154.



IAF
COLLIERS
113.9 IRQ
Chan 86



CATEGORY	A	B	C	D
CIRCLING	980-1 452 (500-1)	1000-1¼ 472 (500-1¼)	1000-1½ 472 (500-1½)	1080-2 552 (600-2)

REIL Rwy 25
MIRL Rwy 7-25

SE-2, 31 MAY 2012 to 28 JUN 2012

SE-2, 31 MAY 2012 to 28 JUN 2012

AIKEN, SOUTH CAROLINA
Amdt 1A 12096

33°39'N - 81°41'W

AIKEN MUNI(AIK)

VOR/DME-A