

CHATT THREE DEPARTURE (RNAV)

AUGUSTA DEP CON ★
119.15 284.625
CLNC DEL 126.075
CTAF
122.8

GREENSBORO
GSO

HOGAP

CHATT

SWANG

BRDYE

- NOTE: DME/DME/IRU or GPS Required.
- NOTE: Radar Required for non-GPS equipped aircraft.
- NOTE: RNAV 1.
- NOTE: For Turbojet aircraft during Masters golf tournament week.
- NOTE: Aircraft departing AIK and AGS expect radar vectors to SWANG.
- NOTE: Do not exceed 230K until advised by ATC.

TAKEOFF OBSTACLE NOTES:

- Rwy 1: Terrain 74' from DER, 9' left of centerline, 496' MSL. Numerous trees beginning 169' from DER, 35' left of centerline, up to 100' AGL/659' MSL. Tree 6023' from DER, 1609' left of centerline, up to 100' AGL/649' MSL. Terrain beginning 75' from DER, 246' right of centerline, up to 496' MSL. Numerous trees beginning 1322' from DER, 241' right of centerline, up to 100' AGL/609' MSL.
- Rwy 7: Terrain beginning 51' from DER, 207' right of centerline up to 499' MSL. Numerous trees beginning 1230' from DER, 550' right of centerline, up to 100' AGL/609' MSL. Numerous trees beginning 1601' from DER, 731' left of centerline, up to 56' AGL/563' MSL.
- Rwy 19: Numerous trees beginning at DER, 110' right of centerline, up to 100' AGL/629' MSL. Numerous trees beginning 6' from DER, 82' left of centerline, up to 100' AGL/639' MSL.
- Rwy 25: Tree 1244' from DER, 766' right of centerline, 73' AGL/572' MSL. Tree 1506' from DER, 661' left of centerline, 72' AGL/561' MSL.

NOTE: Chart not to scale.



DEPARTURE ROUTE DESCRIPTION

TAKEOFF RWY 1, 7, 19, 25: Climb heading assigned by ATC, expect vectors to BRDYE, then on depicted route to CHATT, thence

. . . . Maintain altitude assigned by ATC. Expect clearance to filed altitude/flight level within 10 minutes after departure.

GREENSBORO TRANSITION (CHATT3.GSO):
HOGAP TRANSITION (CHATT3.HOGAP):

TAKEOFF MINIMUMS:

Rwy 7, 19, 25: Standard.

Rwy 1: 200-1¼ or standard with a minimum climb of 220' per NM to 800, or alternatively, with standard takeoff minimums and a normal 200'/NM climb gradient, takeoff must occur no later than 1400' prior to DER.

SE-2, 31 MAY 2012 to 28 JUN 2012

SE-2, 31 MAY 2012 to 28 JUN 2012

DOVER THREE DEPARTURE (RNAV)
(DOVER3.DOVER) 12096

AUGUSTA DEP CON ★
119.15 284.625
CLNC DEL 126.075
CTAF
122.8

TAKEOFF OBSTACLE NOTES:

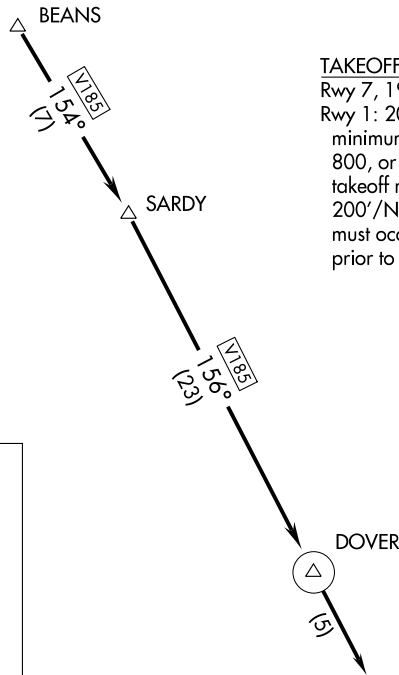
- Rwy 1: Terrain 74' from DER, 9' left of centerline, 496' MSL. Numerous trees beginning 169' from DER, 35' left of centerline, up to 100' AGL/659' MSL. Tree 6023' from DER, 1609' left of centerline, up to 100' AGL/649' MSL. Terrain beginning 75' from DER, 246' right of centerline, up to 496' MSL. Numerous trees beginning 1322' from DER, 241' right of centerline, up to 100' AGL/609' MSL.
- Rwy 7: Terrain beginning 51' from DER, 207' right of centerline up to 499' MSL. Numerous trees beginning 1230' from DER, 550' right of centerline, up to 100' AGL/609' MSL. Numerous trees beginning 1601' from DER, 731' left of centerline, up to 56' AGL/563' MSL.
- Rwy 19: Numerous trees beginning at DER, 110' right of centerline, up to 100' AGL/629' MSL. Numerous trees beginning 6' from DER, 82' left of centerline, up to 100' AGL/639' MSL.
- Rwy 25: Tree 1244' from DER, 766' right of centerline, 73' AGL/572' MSL. Tree 1506' from DER, 661' left of centerline, 72' AGL/561' MSL.



- NOTE: DME/DME/IRU or GPS Required.
- NOTE: Radar Required for non-GPS equipped aircraft.
- NOTE: RNAV 1.
- NOTE: For Turbojet aircraft during Masters golf tournament week.
- NOTE: Do not exceed 230K until advised by ATC.

TAKEOFF MINIMUMS:

Rwy 7, 19, 25: Standard.
Rwy 1: 200-1¼ or standard with a minimum climb of 220' per NM to 800, or alternatively, with standard takeoff minimums and a normal 200'/NM climb gradient, takeoff must occur no later than 1400' prior to DER.



NOTE: Chart not to scale.

DEPARTURE ROUTE DESCRIPTION

TAKEOFF RWY 1, 7, 19, 25: Climb heading assigned by ATC, expect vectors to BEANS, then on depicted route to DOVER, then on heading 156°, expect radar vectors, thence. . . .

. . . . Maintain altitude assigned by ATC. Expect clearance to filed altitude/flight level within 10 minutes after departure.

AIKEN, SOUTH CAROLINA
AIKEN MUNI (AIK)

(DOVER3.DOVER) 12096

SL-5197 (FAA)

AIKEN MUNI (AIK)
AIKEN, SOUTH CAROLINA

JUNPR THREE DEPARTURE (RNAV)

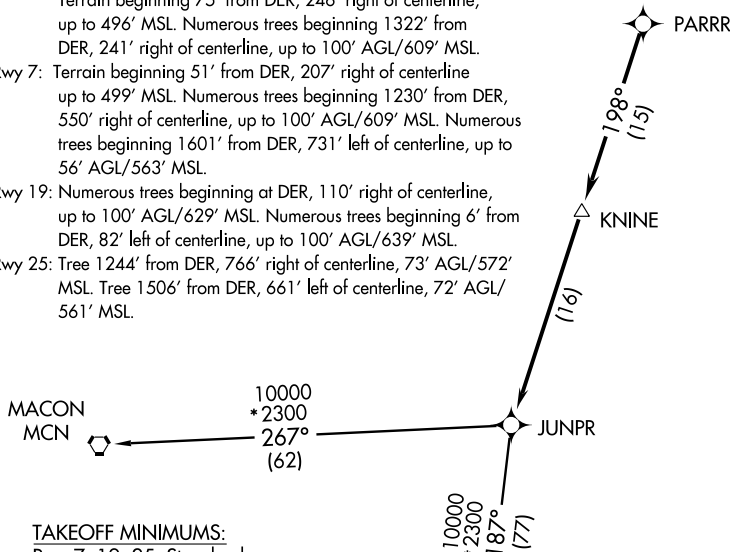
AUGUSTA DEP CON★
119.15 284.625
CLNC DEL 126.075
CTAF
122.8



TAKEOFF OBSTACLE NOTES:

- Rwy 1: Terrain 74' from DER, 9' left of centerline, 496' MSL. Numerous trees beginning 169' from DER, 35' left of centerline, up to 100' AGL/659' MSL. Tree 6023' from DER, 1609' left of centerline, up to 100' AGL/649' MSL. Terrain beginning 75' from DER, 246' right of centerline, up to 496' MSL. Numerous trees beginning 1322' from DER, 241' right of centerline, up to 100' AGL/609' MSL.
- Rwy 7: Terrain beginning 51' from DER, 207' right of centerline up to 499' MSL. Numerous trees beginning 1230' from DER, 550' right of centerline, up to 100' AGL/609' MSL. Numerous trees beginning 1601' from DER, 731' left of centerline, up to 56' AGL/563' MSL.
- Rwy 19: Numerous trees beginning at DER, 110' right of centerline, up to 100' AGL/629' MSL. Numerous trees beginning 6' from DER, 82' left of centerline, up to 100' AGL/639' MSL.
- Rwy 25: Tree 1244' from DER, 766' right of centerline, 73' AGL/572' MSL. Tree 1506' from DER, 661' left of centerline, 72' AGL/561' MSL.

SE-2, 31 MAY 2012 to 28 JUN 2012



TAKEOFF MINIMUMS:

- Rwy 7, 19, 25: Standard.
- Rwy 1: 200-1¼ or standard with a minimum climb of 220' per NM to 800, or alternatively, with standard takeoff minimums and a normal 200'/NM climb gradient, takeoff must occur no later than 1400' prior to DER.

- NOTE: DME/DME/IRU or GPS Required.
- NOTE: Radar Required for non-GPS equipped aircraft.
- NOTE: RNAV 1.
- NOTE: Do not exceed 230K until advised by ATC.

▼ DEPARTURE ROUTE DESCRIPTION

TAKEOFF RWY 1, 7, 19, 25: Climb heading assigned by ATC, expect vectors to PARRR, then on depicted route to JUNPR, thence. . . .

. . . . Maintain altitude assigned by ATC. Expect clearance to filed altitude/flight level within 10 minutes after departure.

ALMA TRANSITION (JUNPR3.AMG):
MACON TRANSITION (JUNPR3.MCN):

NOTE: Chart not to scale.

SE-2, 31 MAY 2012 to 28 JUN 2012

JUNPR THREE DEPARTURE (RNAV)

KAOLN FOUR DEPARTURE (RNAV)
(KAOLN4:KAOLN) 12096

AUGUSTA DEP CON★
119.15 284.625
CLNC DEL 126.075
CTAF
122.8



DEPARTURE ROUTE DESCRIPTION

TAKEOFF RWY 1, 7, 19, 25: Climb on assigned heading for radar vectors to PARRR, then on depicted route to KAOLN, thence. . . .

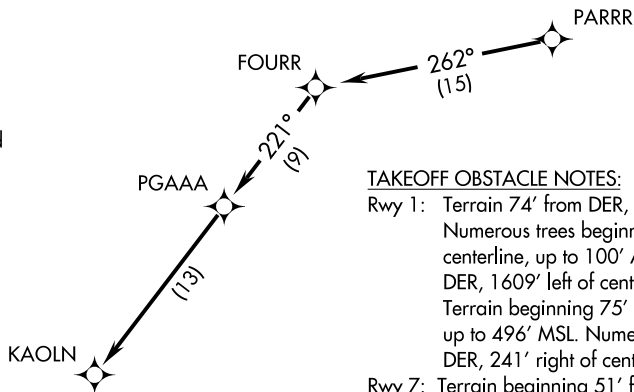
. . . .Maintain altitude assigned by ATC. Expect clearance to filed altitude/flight level within 10 minutes after departure.



TAKEOFF MINIMUMS:

Rwy 7, 19, 25: Standard.

Rwy 1: 200-1¼ or standard with a minimum climb of 220' per NM to 800, or alternatively, with standard takeoff minimums and a normal 200'/NM climb gradient, takeoff must occur no later than 1400' prior to DER.



TAKEOFF OBSTACLE NOTES:

- Rwy 1: Terrain 74' from DER, 9' left of centerline, 496' MSL. Numerous trees beginning 169' from DER, 35' left of centerline, up to 100' AGL/659' MSL. Tree 6023' from DER, 1609' left of centerline, up to 100' AGL/649' MSL. Terrain beginning 75' from DER, 246' right of centerline, up to 496' MSL. Numerous trees beginning 1322' from DER, 241' right of centerline, up to 100' AGL/609' MSL.
- Rwy 7: Terrain beginning 51' from DER, 207' right of centerline up to 499' MSL. Numerous trees beginning 1230' from DER, 550' right of centerline, up to 100' AGL/609' MSL. Numerous trees beginning 1601' from DER, 731' left of centerline, up to 56' AGL/563' MSL.
- Rwy 19: Numerous trees beginning at DER, 110' right of centerline, up to 100' AGL/629' MSL. Numerous trees beginning 6' from DER, 82' left of centerline, up to 100' AGL/639' MSL.
- Rwy 25: Tree 1244' from DER, 766' right of centerline, 73' AGL/572' MSL. Tree 1506' from DER, 661' left of centerline, 72' AGL/561' MSL.



(KAOLN4:KAOLN) 12096
KAOLN FOUR DEPARTURE (RNAV)
SL-5197 (FAA)

AIKEN, SOUTH CAROLINA
AIKEN MUNI (AIK)

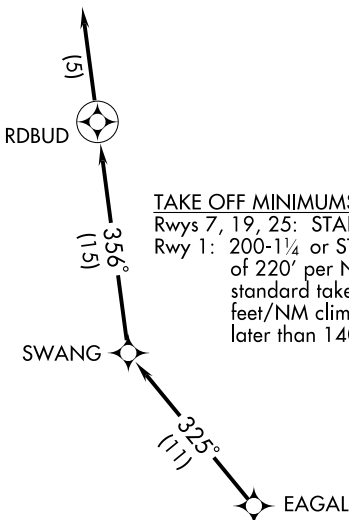
- NOTE: DME/DME/IRU or GPS Required.
- NOTE: Radar Required for non-GPS equipped aircraft.
- NOTE: RNAV 1.
- NOTE: For use during Masters Golf Tournament week only.
- NOTE: Do not exceed 230K until advised by ATC.

NOTE: Chart not to scale.

AIKEN MUNI (AIK)
AIKEN, SOUTH CAROLINA

RDBUD TWO DEPARTURE (RNAV)

AUGUSTA DEP CON ★
119.15 284.625
CLNC DEL 126.075
CTAF
122.8



TAKE OFF MINIMUMS:

Rwys 7, 19, 25: STANDARD.

Rwy 1: 200-1¼ or STANDARD with minimum climb of 220' per NM to 800, or alternatively, with standard takeoff minimums and a normal 200 feet/NM climb gradient, takeoff must occur no later than 1400' from departure end of runway.

- NOTE: RNAV 1.
- NOTE: RADAR Required.
- NOTE: DME/DME/IRU or GPS Required.
- NOTE: Do not exceed 230 KIAS until advised by ATC.
- NOTE: For Prop aircraft only during Masters golf tournament week.



NOTE: Chart not to scale

DEPARTURE ROUTE DESCRIPTION

TAKEOFF RWY 1, 7, 19, 25: Climb heading assigned by ATC, expect vectors to EAGAL, then via depicted route to RDBUD, then fly heading 356°, Expect radar vectors. Thence...

... maintain altitude assigned by ATC. Expect clearance to filed altitude/flight level within 10 minutes after departure.

TAKEOFF OBSTACLE NOTES:

Rwy 1: Terrain 74' from DER, 9' left of centerline, 496' MSL. Numerous trees beginning 169' from DER, 35' left of centerline, up to 100' AGL/659' MSL. Tree 6,023' from DER, 1,609' left of centerline, up to 100' AGL/649' MSL. Terrain beginning 75' from DER, 246' right of centerline up to 496' MSL. Numerous trees beginning 1,322' from DER, 241' right of centerline, up to 100' AGL/609' MSL.

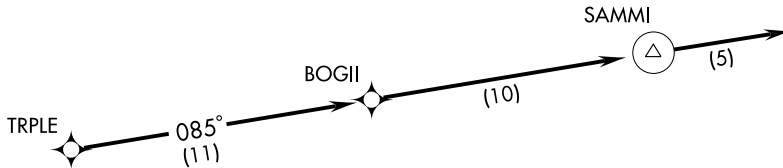
Rwy 7: Terrain beginning 51' from DER, 207' right of centerline, up to 499' MSL. Numerous trees beginning 1,230' from DER, 550' right of centerline, up to 100' AGL/609' MSL. Numerous trees beginning 1,601' from DER, 731' left of centerline, up to 56' AGL/563' MSL.

Rwy 19: Numerous trees beginning at DER, 110' right of centerline, up to 100' AGL/629' MSL. Numerous trees beginning 6' from DER, 82' left of centerline, up to 100' AGL/639' MSL.

Rwy 25: Tree 1,244' from DER, 766' right of centerline, 73' AGL/572' MSL. Tree 1,506' from DER, 661' left of centerline, 72' AGL/561' MSL.

AUGUSTA DEP CON ★
119.15 284.625
CLNC DEL 126.075
CTAF
122.8

NOTE: RNAV 1.
NOTE: RADAR Required.
NOTE: DME/DME/IRU or GPS Required.
NOTE: Do not exceed 230 KIAS until advised by ATC.
NOTE: Aircraft departing AIK and AGS expect radar vectors to SAMMI.



TAKEOFF MINIMUMS:

Rwy 7, 19, 25: STANDARD.
Rwy 1: 200-1¼ or STANDARD with a minimum climb of 220' per NM to 800, or alternatively, with standard takeoff minimums and a normal 200'/NM climb gradient, takeoff must occur no later than 1400' prior to departure end of runway.



NOTE: Chart not to scale

SE-2, 31 MAY 2012 to 28 JUN 2012

SE-2, 31 MAY 2012 to 28 JUN 2012

▼ DEPARTURE ROUTE DESCRIPTION

TAKEOFF RWY 1, 7, 19, 25: Climb heading assigned by ATC. Expect vectors to TRPLE, then via depicted route to SAMMI, then fly heading 085°, Expect radar vectors. Thence...

... maintain altitude assigned by ATC. Expect clearance to filed altitude/flight level within 10 minutes after departure.

TAKEOFF OBSTACLE NOTES:

Rwy 1: Terrain 74' from DER, 9' left of centerline, 496' MSL. Numerous trees beginning 169' from DER, 35' left of centerline, up to 100' AGL/659' MSL. Tree 6,023' from DER, 1,609' left of centerline, up to 100' AGL/649' MSL. Terrain beginning 75' from DER, 246' right of centerline up to 496' MSL. Numerous trees beginning 1,322' from DER, 241' right of centerline, up to 100' AGL/609' MSL.

Rwy 7: Terrain beginning 51' from DER, 207' right of centerline, up to 499' MSL. Numerous trees beginning 1,230' from DER, 550' right of centerline, up to 100' AGL/609' MSL. Numerous trees beginning 1,601' from DER, 731' left of centerline, up to 56' AGL/563' MSL.

Rwy 19: Numerous trees beginning at DER, 110' right of centerline, up to 100' AGL/629' MSL. Numerous trees beginning 6' from DER, 82' left of centerline, up to 100' AGL/639' MSL.

Rwy 25: Tree 1,244' from DER, 766' right of centerline, 73' AGL/572' MSL. Tree 1,506' from DER, 661' left of centerline, 72' AGL/561' MSL.