

PITTSBURGH INTL ATIS ARR 127.25  
ALLEGHENY COUNTY ATIS 120.55  
PITTSBURGH APP CON 123.95 360.8

NESTO  
N40°11.67'-W79°42.82'

VERTICAL NAVIGATION PLANNING INFORMATION

PITTSBURGH TURBOJET:

WEST FLOW-Expect 10,000 250K

When Rwy 28 simultaneous approach is in use, expect 9000.

EAST FLOW- expect 10,000.

PITTSBURGH PROPELLER AIRCRAFT:

Filed at 210K or greater, expect 7000.

Filed less than 210K, expect 6000.

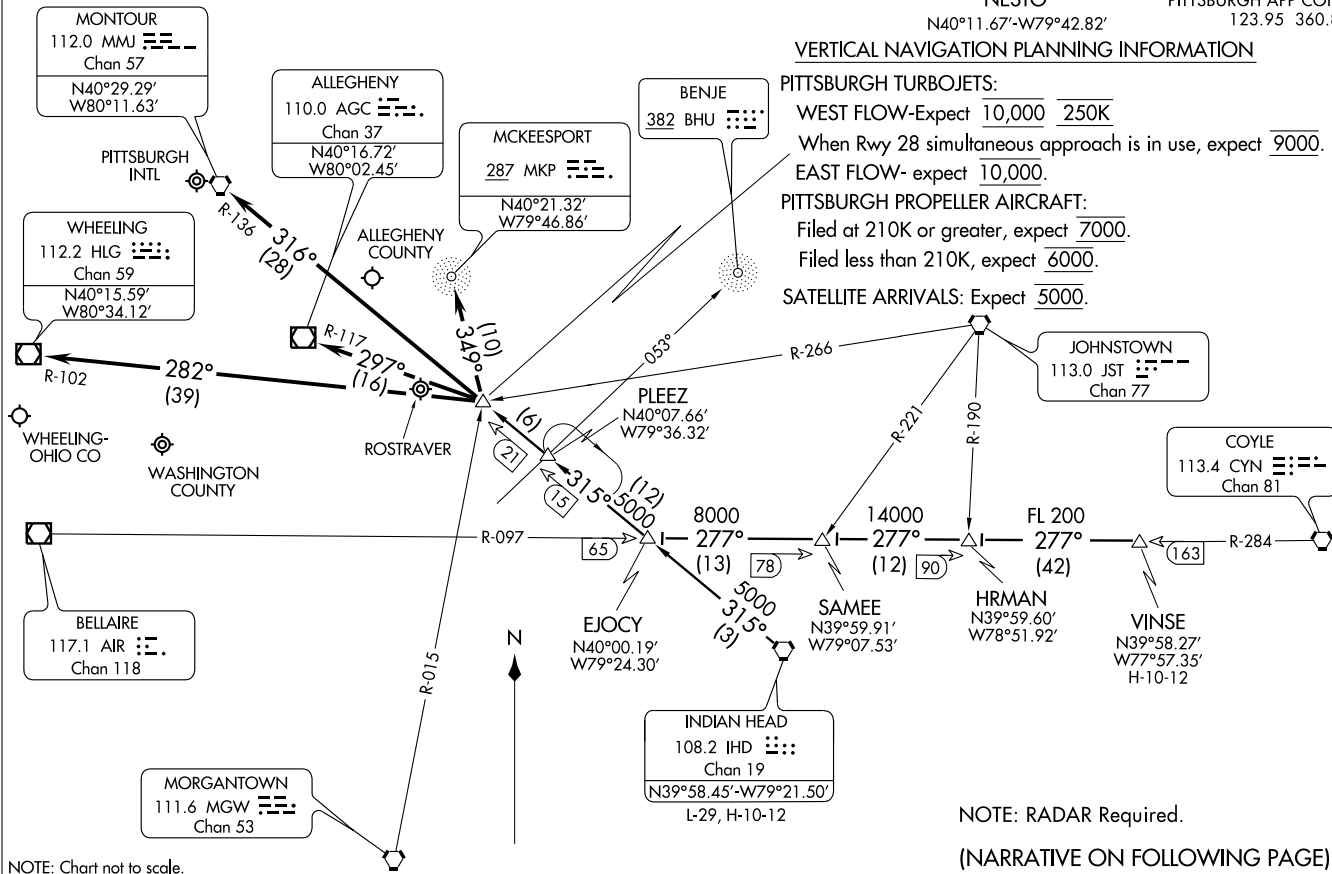
SATELLITE ARRIVALS: Expect 5000.

NESTO THREE ARRIVAL  
(NESTO.NESTO3) 11069

(NESTO.NESTO3) 11069  
NESTO THREE ARRIVAL

ST-570 (FAA)

PITTSBURGH, PENNSYLVANIA



NOTE: Chart not to scale.

NOTE: RADAR Required.

(NARRATIVE ON FOLLOWING PAGE)

PITTSBURGH, PENNSYLVANIA

ARRIVAL DESCRIPTION

INDIAN HEAD TRANSITION (IHD.NESTO3): From over IHD VORTAC via IHD R-315 to NESTO INT. Thence....

VINSE TRANSITION (VINSE.NESTO3): From over VINSE INT via AIR R-097 and IHD R-315 to NESTO INT. Thence....

....PIT: From over NESTO INT direct MMJ VORTAC. Expect radar vectors after NESTO INT.

....AGC WEST FLOW: From over NESTO INT direct MKP NDB, then expect radar vectors.

EAST FLOW: From over NESTO INT direct AGC VOR/DME, then expect radar vectors.

....HLG: From over NESTO INT direct HLG VOR/DME, then expect radar vectors.

....AFJ: From over NESTO INT via HLG R-102, then expect radar vectors.

LOST COMMUNICATIONS PROCEDURE:

Standard.

NE-4, 31 MAY 2012 to 28 JUN 2012

NE-4, 31 MAY 2012 to 28 JUN 2012

PITTSBURGH APP CON  
120.87 360.8  
PITTSBURGH INTL ATIS  
ARR 127.25  
ALLEGHENY COUNTY ATIS  
120.55  
WASHINGTON COUNTY  
AWOS-3 119.175

WHEELING  
112.2 HLG  
Chan 59  
N40°15.60'  
W80°34.12'

PITTSBURGH INTL

MONTOUR  
112.0 MMJ  
Chan 57  
N40°29.29'  
W80°11.63'

ALLEGHENY  
110.0 AGC  
Chan 37  
N40°16.72'  
W80°02.45'

NEWCOMERSTOWN  
111.8 CTW  
Chan 55  
N40°13.75'  
W81°28.59'  
L-29, H-10

BELLAIRE  
117.1 AIR  
Chan 118  
N40°01.02'  
W80°49.04'

ZANESVILLE  
111.4 ZZV  
Chan 51

WISKE  
N40°07.75'-W80°40.57'

**VERTICAL NAVIGATION PLANNING INFORMATION**

**PITTSBURGH TURBOJET:**  
WEST FLOW - Expect clearance to cross at 10,000'.  
EAST FLOW - Expect clearance to cross at 10,000' and 250K.  
**PITTSBURGH PROPELLER AIRCRAFT:**  
Filed at 210K or greater expect clearance to cross at 7000'.  
Filed at less than 210K expect clearance to cross at 6000'.  
**SATELLITE ARRIVALS:** Expect clearance to cross at 5000'.

**VERTICAL NAVIGATION PLANNING INFORMATION**  
Turbojets expect clearance to cross at FL210.  
Propeller aircraft expect clearance to cross at 15,000'.

PYRAT  
N39°32.24'-W81°16.95'

CLARKSBURG  
112.6 CKB  
Chan 73  
N39°15.19'  
W80°16.07'  
L-29

HENDERSON  
115.9 HNN  
Chan 106  
N38°45.25'  
W82°01.57'  
L-26, H-10-12

PARKERSBURG  
108.6 JPU  
Chan 23  
N39°26.47'-W81°22.49'  
L-29, H-4-6



**CKB TRANSITION:**  
Aircraft DO NOT file.  
For ATC Use only.  
Flow Control Purposes.

NOTE: Chart not to scale

(NARRATIVE ON FOLLOWING PAGE)

ARRIVAL DESCRIPTION

CLARKSBURG TRANSITION (CKB.WISKE3): From over CKB VOR/DME via CKB R-335 and AIR R-158 to AIR VOR/DME, then via AIR R-051 to WISKE INT.

Thence. . .

HENDERSON TRANSITION (HNN.WISKE3): From over HNN VORTAC via HNN R-039 and JPU R-220 to JPU VORTAC, then via JPU R-040 to PYRAT INT, then via AIR R-224 to AIR VOR/DME, then via AIR R-051 to WISKE INT. Thence. . .

NEWCOMERSTOWN TRANSITION (CTW.WISKE3): From over CTW VOR/DME via CTW R-120 and AIR R-300 to AIR VOR/DME, then via AIR R-051 to WISKE INT.

Thence. . .

PARKERSBURG TRANSITION (JPU.WISKE3): From over JPU VORTAC via JPU R-040 to PYRAT INT, then via AIR R-224 to AIR VOR/DME, then via AIR R-051 to WISKE INT.

Thence. . .

. . . .From over WISKE INT:

For Pittsburgh Intl: direct MMJ VORTAC (MEA 3000). Expect vectors after WISKE INT.

For Allegheny County: direct AGC VOR/DME (MEA 3100), direct Allegheny County.

For Washington County: direct HLG VOR/DME (MEA 3000), direct Washington County.

NE-4, 31 MAY 2012 to 28 JUN 2012

NE-4, 31 MAY 2012 to 28 JUN 2012