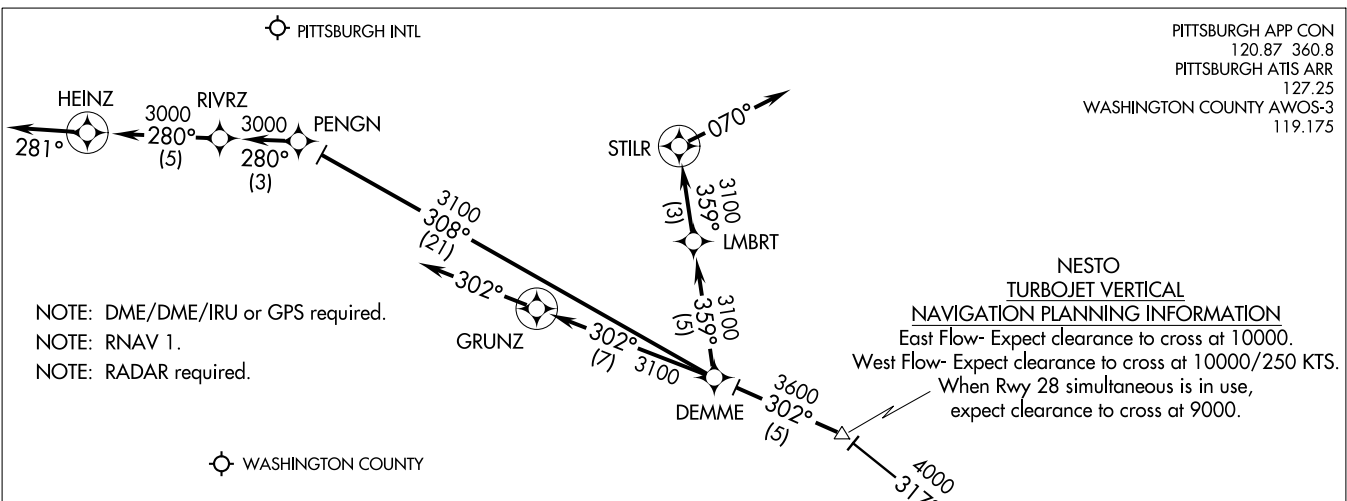


DEMME ONE ARRIVAL (RNAV)
(DEMME:DEMME1) 09351

(DEMME:DEMME1) 09351
DEMME ONE ARRIVAL (RNAV)



INDIAN HEAD TRANSITION (IHD.DEMME1)
VINSE TRANSITION (VINSE.DEMME1)

From over NESTO via 302° track to DEMME, thence via assigned runway transition.

LANDING RWY 32: From over DEMME via 302° track to GRUNZ, then fly heading 302°. Expect radar vectors to final approach.

LANDING WEST RWY 28L/28R/28C: From over DEMME via 359° track to LMBRT, then via 359° track to STILR, then fly heading 070°. Expect radar vectors to final approach course.

LANDING EAST RWY 10R/10L/10C: From over DEMME via 308° track to PENGN, then via 280° track to RIVRZ, then via 280° track to HEINZ, then fly heading 281°. Expect radar vectors to final approach course.

PITTSBURGH, PENNSYLVANIA

ST-570 (FAA)
PITTSBURGH, PENNSYLVANIA

PITTSBURGH APP CON 120.87 360.8
 PITTSBURGH ATIS ARR 127.25
 WASHINGTON COUNTY AWOS-3 119.175



NOTE: Chart not to scale

FEWGA TWO ARRIVAL (RNAV)
(FEWGA,FEWGA2) 11349

PITTSBURGH APP CON
120.87 360.8
PITTSBURGH ATIS ARR
127.25
WASHINGTON COUNTY AWOS-3
119.175

NOTE: RNAV 1.
NOTE: Radar required.
NOTE: DME/DME/IRU or GPS required.
NOTE: CKB Transition: Aircraft do not file, for ATC use only, flow control purposes.

TURBOJET VERTICAL NAVIGATION
PLANNING INFORMATION

East Flow: Expect 10000 and 250K.
West Flow: Expect 10000.

WASHINGTON COUNTY

- CLARKSBURG TRANSITION (CKB.FEWGA2):
- HENDERSON TRANSITION (HNN.FEWGA2):
- NEWCOMERSTOWN TRANSITION (CTW.FEWGA2):
- PARKERSBURG TRANSITION (JPU.FEWGA2):

From over WISKE on track 054° to FEWGA. Thence via assigned runway transition.

LANDING EAST RWY 10L/10R/10C: From over FEWGA on track 001° to LEMEW, then fly heading 300°. Expect radar vectors to final approach course.

LANDING WEST RWY 28L/28R/28C: From over FEWGA on track 054° to BBLAK, then on track 071° to GOLDH, then on track 071° to JOEPA, then on track 071° to GUINZ, then on track 100° to CYDNY, then fly heading 100°. Expect radar vectors to final approach course.

LANDING RWY 32: From over FEWGA 054° track to BBLAK, then track 071° to GOLDH, then on track 099° to FLURY, then on track 098° to MLKIN, then on track 144° to CRSBY, then fly heading 145°. Expect radar vectors to final approach course.

NOTE: Chart not to scale

NEWCOMERSTOWN
CTW

13000
121°
(33)

PYRAT
TURBOJET
VERTICAL NAVIGATION
PLANNING INFORMATION
Expect FL210.

10 NM
052°
BELLAIRE
AIR

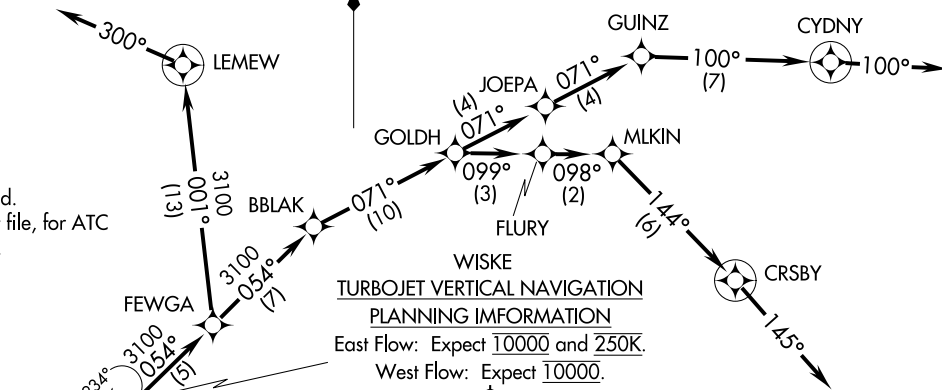
13000
336°
(32)

10 NM
225°
17000
044°
(51)
PARKERSBURG
JPU

13000
336°
(32)
CLARKSBURG
CKB

HENDERSON
HNN

PITTSBURGH, PENNSYLVANIA



FEWGA TWO ARRIVAL (RNAV)
(FEWGA,FEWGA2) 11349

ST-570 (FAA)

PITTSBURGH, PENNSYLVANIA