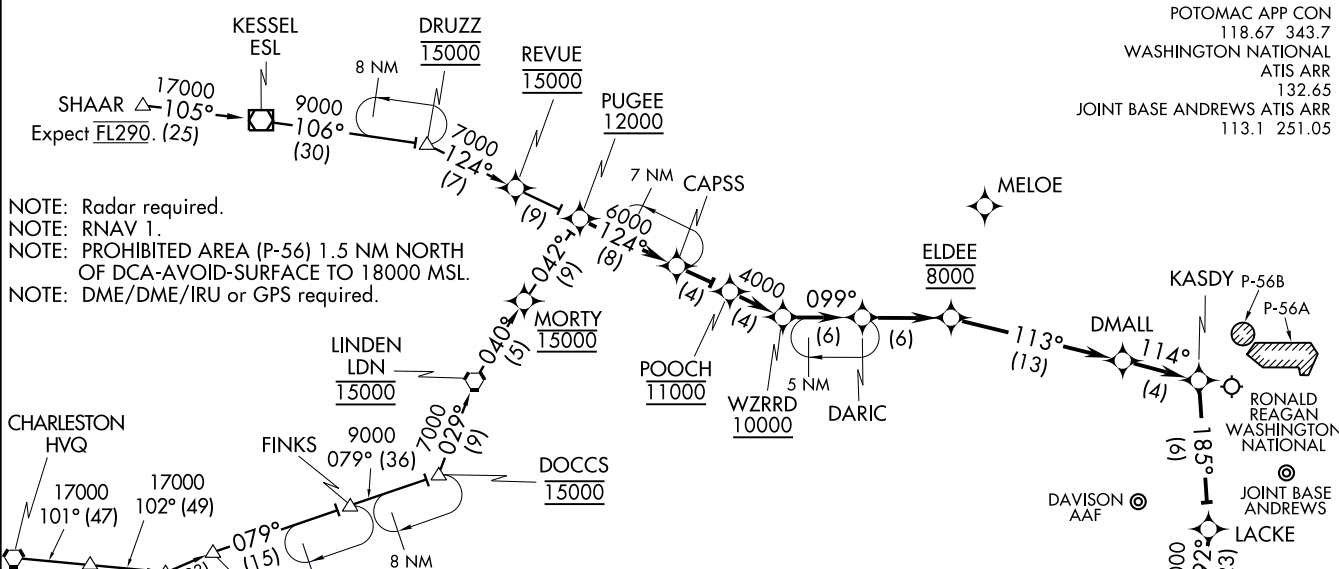


ELDEE FIVE ARRIVAL (RNAV)
(ELDEE:ELDEE5) 12152

(ELDEE:ELDEE5) 12152
ELDEE FIVE ARRIVAL (RNAV)

POTOMAC APP CON
118.67 343.7
WASHINGTON NATIONAL
ATIS ARR
132.65
JOINT BASE ANDREWS ATIS ARR
113.1 251.05



NOTE: Radar required.
 NOTE: RNAV 1.
 NOTE: PROHIBITED AREA (P-56) 1.5 NM NORTH OF DCA-AVOID-SURFACE TO 18000 MSL.
 NOTE: DME/DME/IRU or GPS required.

ARRIVAL ROUTE DESCRIPTION

BECKLEY TRANSITION (BKW.ELDEE5):
CHARLESTON TRANSITION (HVQ.ELDEE5):
SHAAR TRANSITION (SHAAR.ELDEE5):

From over PUGEE on track 124° to CAPSS, then on track 124° to POOCH, then on track 124° to WZRRD, then on track 099° to DARIC, then on track 099° to ELDEE, then on track 113° to DMALL, then on track 114° to KASDY, then on track 185° to LACKE, then on track 192° to SABBI. Depart SABBI heading 192° for vectors to final approach course.

NOTE: Chart not to scale.

WASHINGTON, DC

WASHINGTON, DC

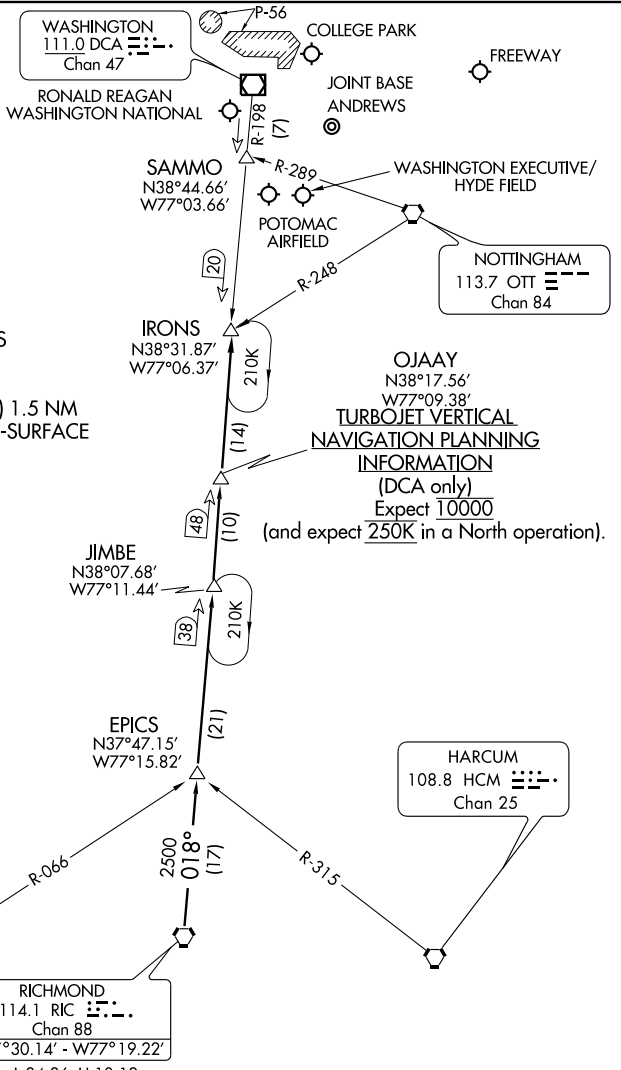
ST-443 (FAA)

IRONS FOUR ARRIVAL

WASHINGTON, DC

POTOMAC APP CON

119.85 322.3 (DCA ARRIVALS ONLY)
128.35 270.275 (ADW ARRIVALS ONLY)
JOINT BASE ANDREWS ATIS
113.1 251.05
WASHINGTON NATIONAL ATIS
132.65



NOTE: Aircraft use DCA ATIS to determine the direction of landing prior to IRONS INT. (DCA only).

NOTE: PROHIBITED AREA (P-56) 1.5 NM NORTH OF DCA-AVOID-SURFACE TO 18000 MSL.

OJAAY
N38°17.56'
W77°09.38'
TURBOJET VERTICAL NAVIGATION PLANNING INFORMATION
(DCA only)
Expect 10000
(and expect 250K in a North operation).

NE-3, 31 MAY 2012 to 28 JUN 2012

NE-3, 31 MAY 2012 to 28 JUN 2012

NOTE: Chart not to scale.

RICHMOND TRANSITION (RIC.IRONS4): From over RIC VORTAC via RIC R-018 and DCA R-198 to IRONS INT. Thence. . . .

. . . .From over IRONS INT:

Ronald Reagan Washington National Airport (DCA only):

LANDING SOUTH: Then via DCA R-198 to SAMMO INT, heading for vectors to the final approach course.

LANDING NORTH: Expect vectors to final approach course.

All other airports: Expect vectors.

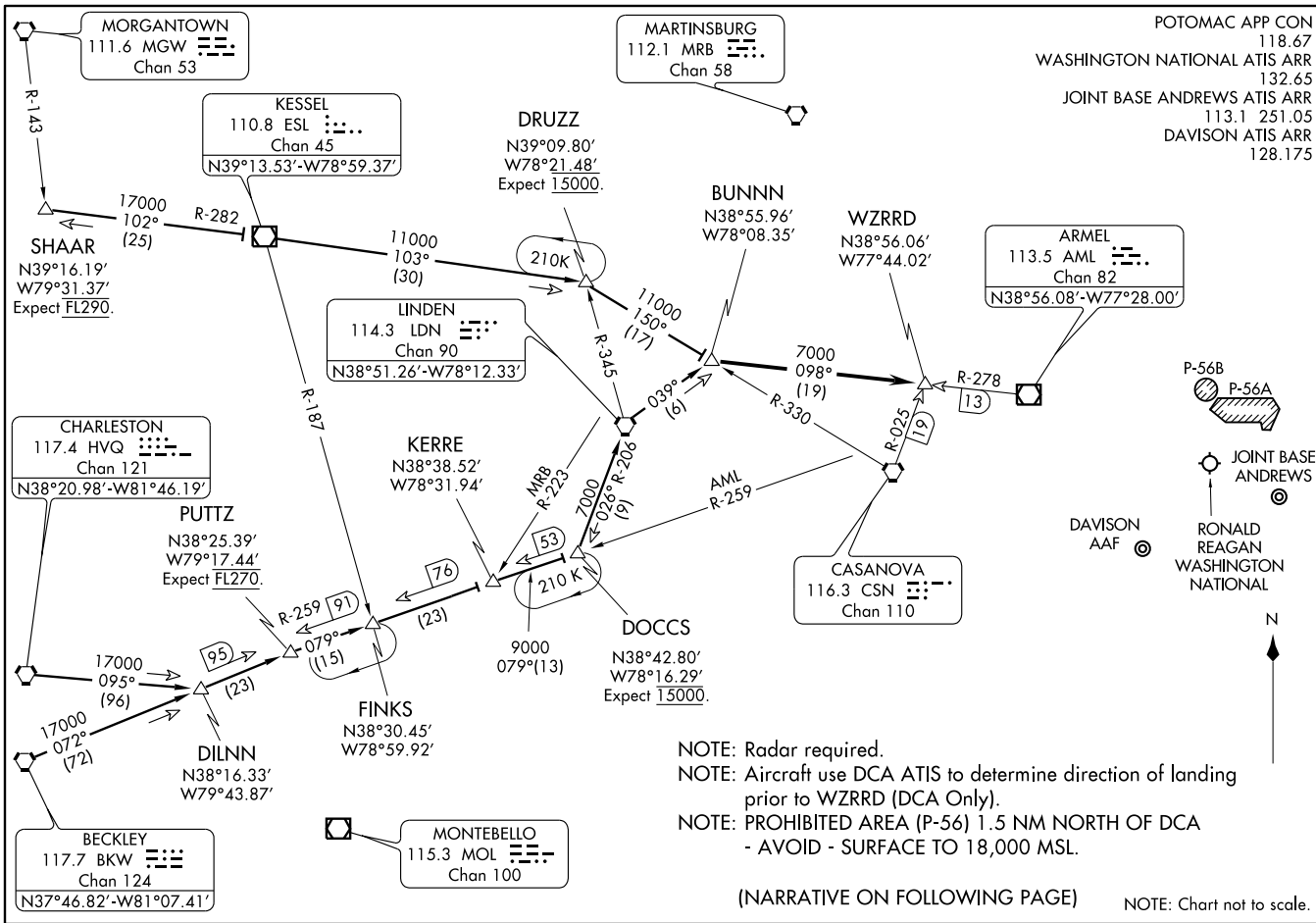
IRONS FOUR ARRIVAL

WASHINGTON, DC

WZRRD TWO ARRIVAL
(WZRRD, WZRRD2) 1215Z

WZRRD TWO ARRIVAL

WASHINGTON, DC



(WZRRD, WZRRD2) 1215Z
WZRRD TWO ARRIVAL

ST-443 (FAA)

WASHINGTON, DC

ARRIVAL ROUTE DESCRIPTION

BECKLEY TRANSITION (BKW.WZRRD2): From over BKW VORTAC via BKW R-072 to PUTTZ INT, then via AML R-259 to DOCCS INT, then via LDN R-206 to LDN VORTAC, then via LDN R-039 to BUNNN INT, thence

CHARLESTON TRANSITION (HVQ.WZRRD2): From over HVQ VORTAC via HVQ R-095 to DILNN INT, then via BKW R-072 to PUTTZ INT, then via AML R-259 to DOCCS INT, then via LDN R-206 to LDN VORTAC, then via LDN R-039 to BUNNN INT, thence

SHAAR TRANSITION (SHAAR.WZRRD2): From over SHAAR INT via ESL R-282 to ESL VOR/DME, then via R-103 to DRUZZ INT, then via CSN R-330 to BUNNN, thence

. . . . from over BUNNN INT via AML R-278 to WZRRD INT. Expect vectors to final approach course after WZRRD INT.

NE-3, 31 MAY 2012 to 28 JUN 2012

NE-3, 31 MAY 2012 to 28 JUN 2012