

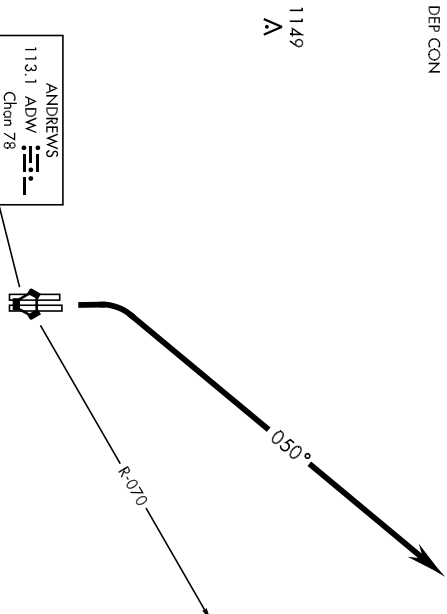
ANDREWS ONE DEPARTURE

SI-561 [USAF]

JOINT BASE ANDREWS (KADW)

CAMP SPRINGS, MARYLAND

ATIS 113.1 251.05
 GND CON
 121.8 275.8
 ANDREWS TOWER
 118.4 349.0
 POTOMAC TRACON DEP CON
 125.65 348.725



**RADAR VECTORS REQUIRED
 WITHIN 10 NM
 FROM DEPARTURE**

RADAR REQUIRED

▼ DEPARTURE ROUTE DESCRIPTION

TAKE-OFF RWY 1L/1R. Climbing right turn to 3000 heading 050°. Expect radar vectors to intercept ADW VORTAC R-070.

ANDREWS ONE DEPARTURE

CAMP SPRINGS, MARYLAND
 JOINT BASE ANDREWS (KADW)

CAMP SPRINGS ONE DEPARTURE

SL-561 (USAF)

JOINT BASE ANDREWS (KADW)

CAMP SPRINGS, MARYLAND

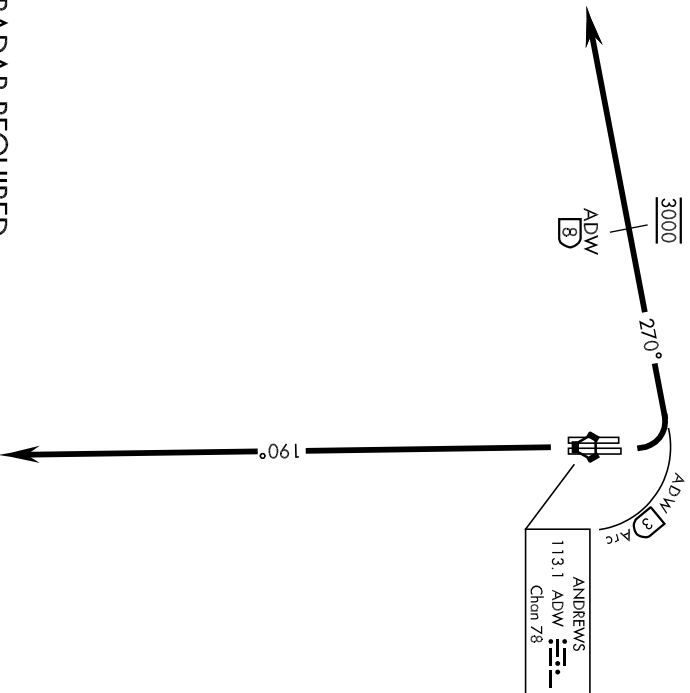
Rwy	Knots	60	120	180	240
1L/1R	V/V(fpm)	380	760	1140	1520

ATC Climb Rate to 3000

If unable to make published climb gradient
advise ATC prior to departure.

ATIS 113.1 251.05
 GND CON
 121.8 275.8
 ANDREWS TOWER
 118.4 349.0
 POTOMAC TRACON DEP CON
 118.95 257.2

1149
 A
**RADAR VECTORS REQUIRED
 WITHIN 10 NM
 FROM DEPARTURE**



RADAR REQUIRED

▼ **DEPARTURE ROUTE DESCRIPTION**

TAKE-OFF Rwy 1L/1R: Turn left climb on heading 270° within 3 DME of ADW VORTAC, cross ADW 8 DME at 3000. Expect radar vectors.

TAKE-OFF Rwy 19R/19L: Climb on heading 190° to 3000. Expect radar vectors to the west.

CAMP SPRINGS ONE DEPARTURE

CAMP SPRINGS, MARYLAND
 JOINT BASE ANDREWS (KADW)

MORNINGSIDE ONE DEPARTURE

JOINT BASE ANDREWS (KADW)
CAMP SPRINGS, MARYLAND

SL-561 [USAF]

ATIS 113.1 251.05
GND CON
121.8 275.8
ANDREWS TOWER
118.4 349.0
POTOMAC TRACON DEP CON
125.65 348.725

1149
A



**RADAR VECTORS REQUIRED
WITHIN 10 NM
FROM DEPARTURE**



RADAR REQUIRED

▼ DEPARTURE ROUTE DESCRIPTION

TAKE-OFF RWY 1L/1R: Climb on heading 010° to 3000. Expect radar vectors.

TAKE-OFF RWY 19R/19L: Climb on heading 190° to 3000. Expect radar vectors to the South or East.

MORNINGSIDE ONE DEPARTURE

CAMP SPRINGS, MARYLAND
JOINT BASE ANDREWS (KADW)