

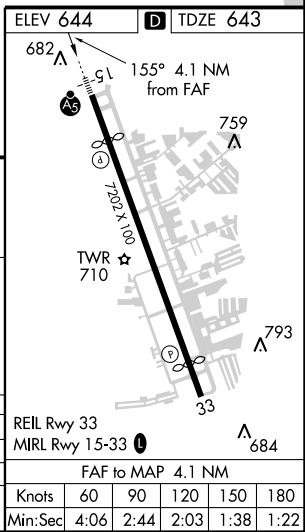
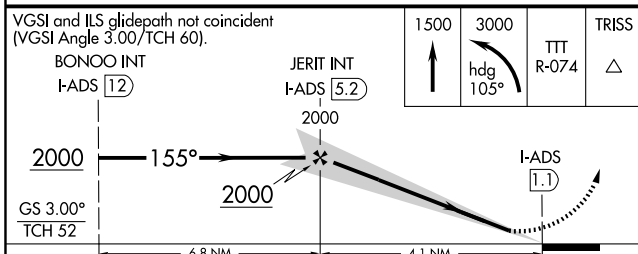
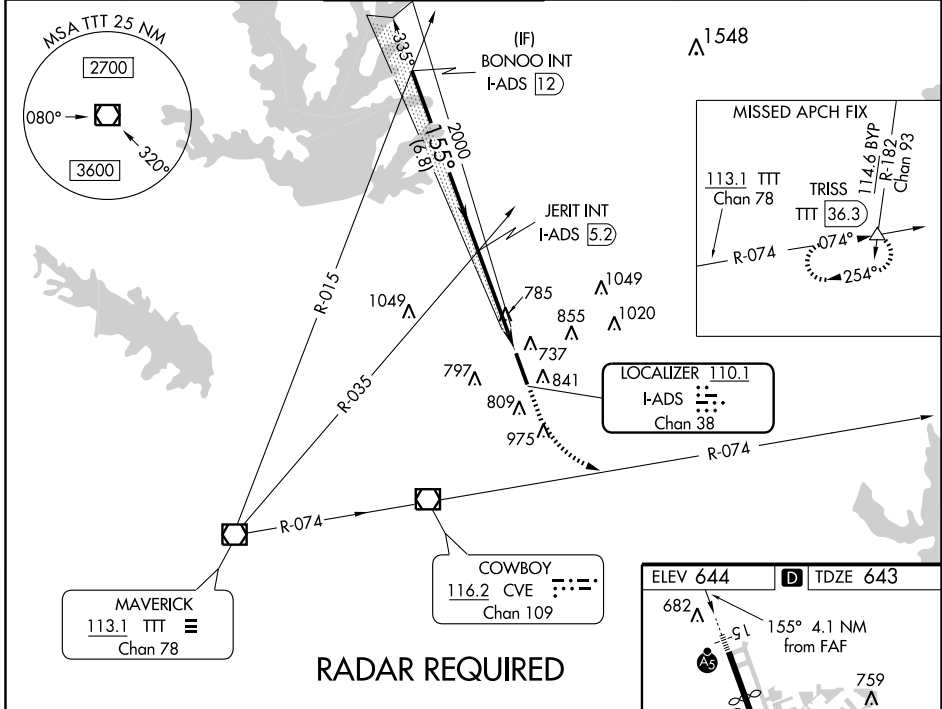
LOC/DME I-ADS 110.1 Chan 38	APP CRS 155°	Rwy Idg 5613 TDZE 643 Apt Elev 644
---	------------------------	---

ILS or LOC RWY 15

DALLAS/ADDISON (ADS)

<p>▽ When control tower closed, obtain local altimeter setting on UNICOM; when not received, use Dallas-Love Field altimeter setting and increase all DAs 39 feet and MDAs 40 feet. Inoperative table does not apply to S-ILS 15 all Cats, S-LOC 15 Cats A, B & C. For inoperative MALSRS, increase S-LOC 15 Cat D visibility to 1¼. Visibility reduction by helicopters NA.</p>	<p>MALSRS</p> <p>MISSED APPROACH: Climb to 1500 then climbing left turn to 3000 via heading 105° and TTT VOR/DME R-074 to TRISS Int/TTT 36.3 DME and hold.</p>
---	--

ATIS 133.4	REGIONAL APP CON 124.3 282.275	ADDISON TOWER* 126.0 (CTAF) 239.0	GND CON 121.6	CLNC DEL 119.55	UNICOM 122.95
----------------------	--	---	-------------------------	---------------------------	-------------------------



CATEGORY	A	B	C	D
S-ILS 15		893-1	250 (300-1)	
S-LOC 15		1040-1	397 (400-1)	
CIRCLING	1200-1	556 (600-1)	1240-1½ 596 (600-1½)	1280-2 636 (700-2)

SC-2, 31 MAY 2012 to 28 JUN 2012

SC-2, 31 MAY 2012 to 28 JUN 2012

WAAS CH 82202 W15A	APP CRS 155°	Rwy ldg 5613 TDZE 643 Apt Elev 644
---------------------------------	------------------------	---

RNAV (GPS) RWY 15

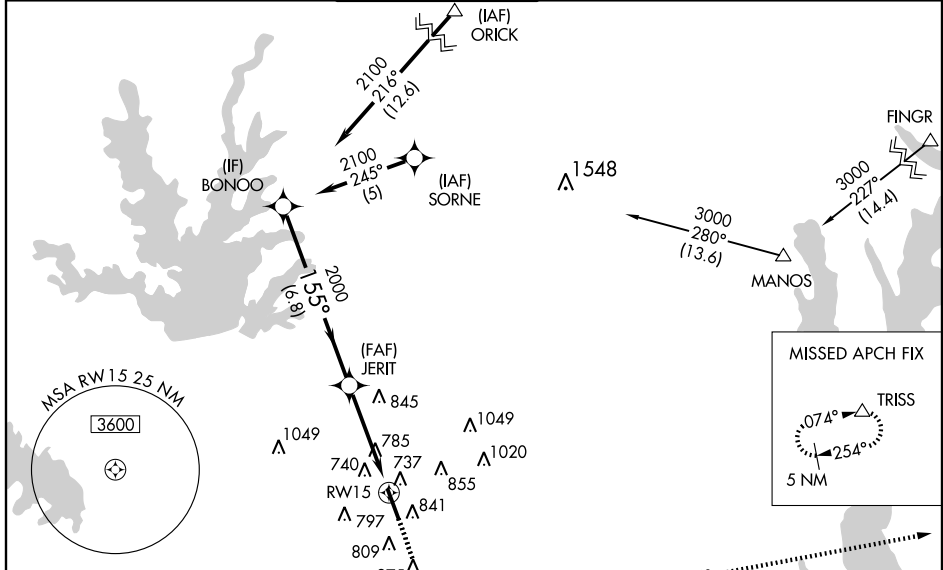
DALLAS/ADDISON (ADS)

▽ Inoperative table does not apply to LPV all Cats, LNAV/VNAV all Cats, and LNAV Cats A/B. Baro-VNAV NA when using Dallas Love Field altimeter setting. For uncompensated Baro-VNAV systems, LNAV/VNAV NA below -16°C (4°F) or above 47°C (117°F). DME/DME RNP-0.3 NA. Visibility reduction by helicopters NA. For inoperative MALSR increase LNAV Cat C visibility to 1/4. When control tower closed, obtain local altimeter setting on UNICOM; when not received use Dallas-Love Field altimeter and increase all DAs by 39 feet and all MDAs by 40 feet.

▲ MALSR

MISSED APPROACH: Climb to 3000 direct VEYXE and via 074° track to TRISS and hold.

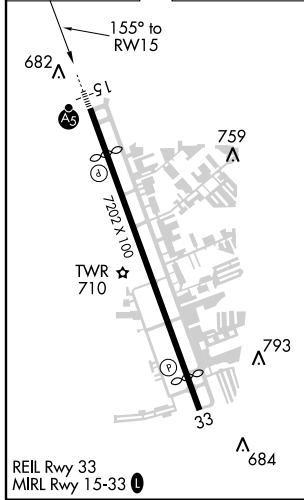
ATIS 133.4	REGIONAL APP CON 124.3 282.275	ADDISON TOWER ★ 126.0 (CTAF) 239.0	GND CON 121.6	CLNC DEL 119.55	UNICOM 122.95
----------------------	--	--	-------------------------	---------------------------	-------------------------



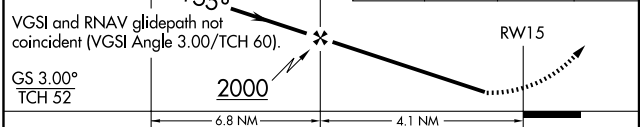
SC-2, 31 MAY 2012 to 28 JUN 2012

SC-2, 31 MAY 2012 to 28 JUN 2012

ELEV 644	D	TDZE 643
-----------------	----------	-----------------



Procedure	BONOO	3000	VEYXE	TRISS
Turn NA	2100	↑	★	△
	155°		tr 074°	



CATEGORY	A	B	C	D
LPV DA		943-1	300 (300-1)	
LNAV/VNAV DA		1076-1	433 (500-1)	
LNAV MDA		1100-1	457 (500-1)	
CIRCLING	1200-1	556 (600-1)	1240-1½ 596 (600-1½)	1280-2 636 (700-2)

RNAV (GPS) RWY 33

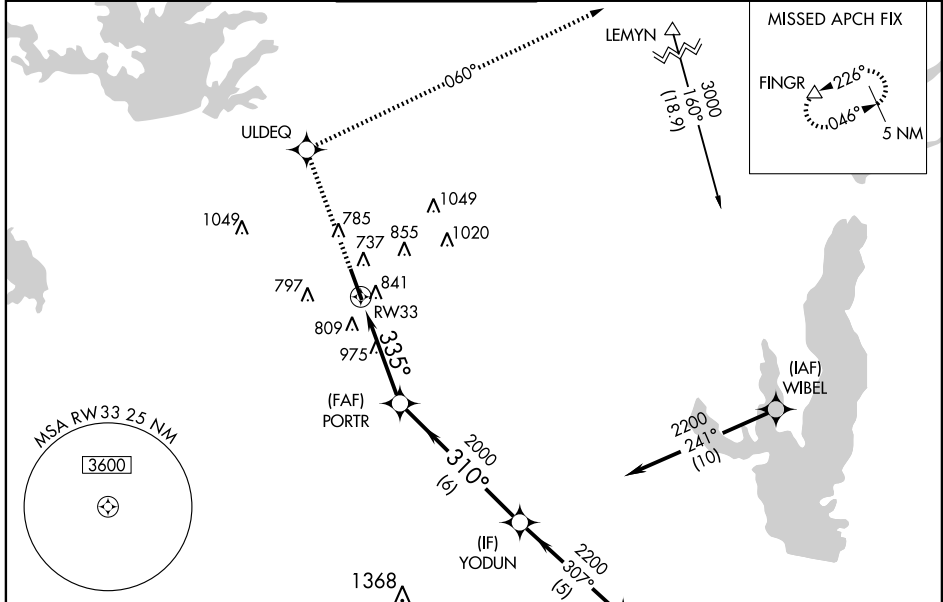
DALLAS/ADDISON (ADS)

APP CRS 335°	Rwy Idg 6431
	TDZE 644
	Apt Elev 644

▽ DME/DME RNP-0.3 NA. Visibility reduction by helicopters NA. When control tower closed, obtain local altimeter setting on unicom; when not received use Dallas-Love Field altimeter setting and increase all MDAs 40 feet and LNAV visibility Cats C and D ¼ mile and circling Cat C visibility ¼ mile.

▲ MISSED APPROACH: Climb to 5000 direct ULDEQ and via 060° track to FINGR and hold.

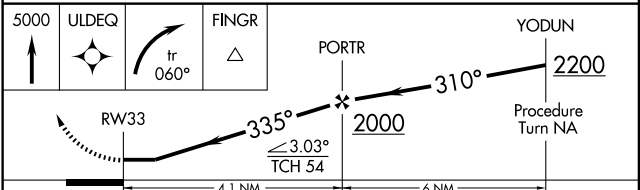
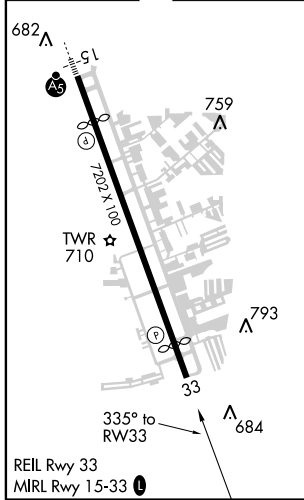
ATIS 133.4	REGIONAL APP CON 124.3 282.275	ADDISON TOWER * 126.0 (CTAF) 0 239.0	GND CON 121.6	CLNC DEL 119.55	UNICOM 122.95
----------------------	--	--	-------------------------	---------------------------	-------------------------



SC-2, 31 MAY 2012 to 28 JUN 2012

SC-2, 31 MAY 2012 to 28 JUN 2012

ELEV 644	D	TDZE 644
----------	----------	----------



CATEGORY	A	B	C	D
LNAV MDA	1240-1	596 (600-1)	1240-1½ 596 (600-1½)	1240-1¾ 596 (600-1¾)
CIRCLING	1240-1	596 (600-1)	1240-1½ 596 (600-1½)	1280-2 636 (700-2)