

(HOCUT4.HOCUT) 12040 HOCUT FOUR DEPARTURE

SL-519 (FAA)

ARCATA (ACV)
ARCATA-EUREKA, CALIFORNIA

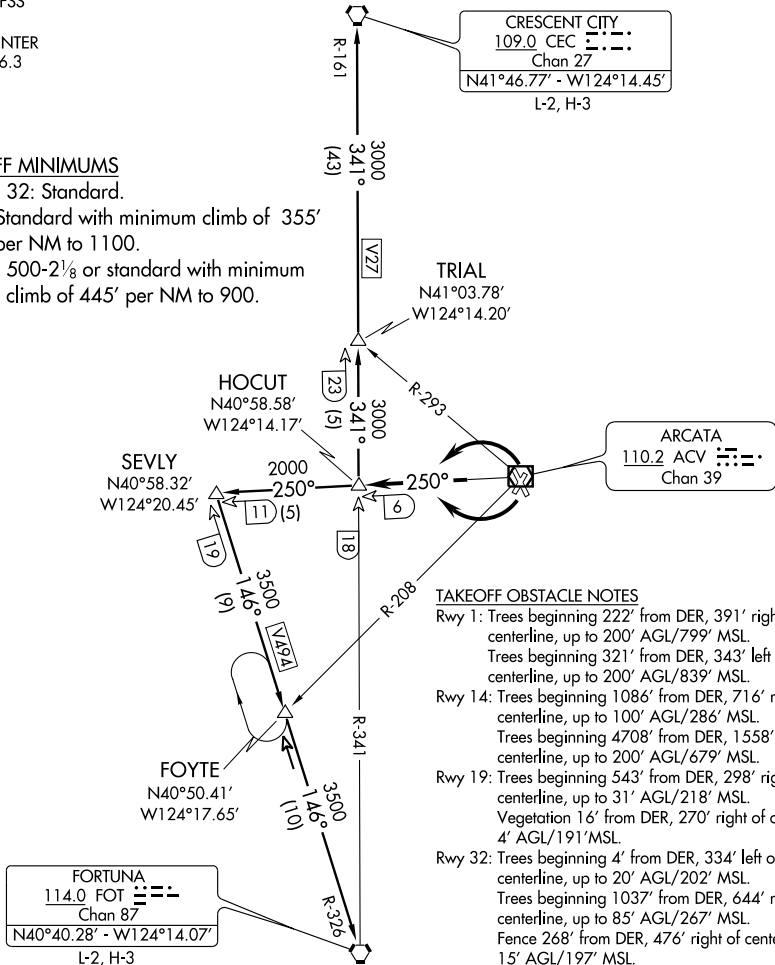
OAKLAND FSS
122.6
SEATTLE CENTER
124.85 306.3

TAKEOFF MINIMUMS

Rwy 19, 32: Standard.

Rwy 1: Standard with minimum climb of 355' per NM to 1100.

Rwy 14: 500-2½ or standard with minimum climb of 445' per NM to 900.



TAKEOFF OBSTACLE NOTES

- Rwy 1: Trees beginning 222' from DER, 391' right of centerline, up to 200' AGL/799' MSL. Trees beginning 321' from DER, 343' left of centerline, up to 200' AGL/839' MSL.
- Rwy 14: Trees beginning 1086' from DER, 716' right of centerline, up to 100' AGL/286' MSL. Trees beginning 4708' from DER, 1558' left of centerline, up to 200' AGL/679' MSL.
- Rwy 19: Trees beginning 543' from DER, 298' right of centerline, up to 31' AGL/218' MSL. Vegetation 16' from DER, 270' right of centerline, 4' AGL/191' MSL.
- Rwy 32: Trees beginning 4' from DER, 334' left of centerline, up to 20' AGL/202' MSL. Trees beginning 1037' from DER, 644' right of centerline, up to 85' AGL/267' MSL. Fence 268' from DER, 476' right of centerline, 15' AGL/197' MSL. Navaid 581' from DER, 258' right of centerline, 20' AGL/202' MSL.

NOTE: Chart not to scale.

DEPARTURE ROUTE DESCRIPTION

TAKEOFF RUNWAYS 1 and 32: Climbing left turn on ACV R-250, thence. . . .

TAKEOFF RUNWAYS 14 and 19: Climbing right turn on ACV R-250, thence. . . .

. . . .on (transition) or (assigned route).

CRESCENT CITY TRANSITION (HOCUT4.CEC): From over HOCUT INT via FOT R-341 and CEC R-161 to CEC VORTAC.

FORTUNA TRANSITION (HOCUT4.FOT): From over HOCUT INT via ACV R-250 to SEVLY INT, then via FOT R-326 to FOT VORTAC.

HOCUT FOUR DEPARTURE (HOCUT4.HOCUT) 12040

ARCATA-EUREKA, CALIFORNIA
ARCATA (ACV)

SW-2, 31 MAY 2012 to 28 JUN 2012

SW-2, 31 MAY 2012 to 28 JUN 2012