

GROTON TRANSITION (GON.DEEPO1)  
NORWICH TRANSITION (ORW.DEEPO1)  
RIFLE TRANSITION (RIFLE.DEEPO1)

. . . From DEEPO, via 118° track to CONDN; thence via 060° track to SALDY. Depart SALDY heading 060°, expect radar vectors to final approach course.

CAPE APP CON ★  
133.75 318.1  
NANTUCKET ATIS  
127.5  
NANTUCKET TOWER ★  
118.3 (CTAF)

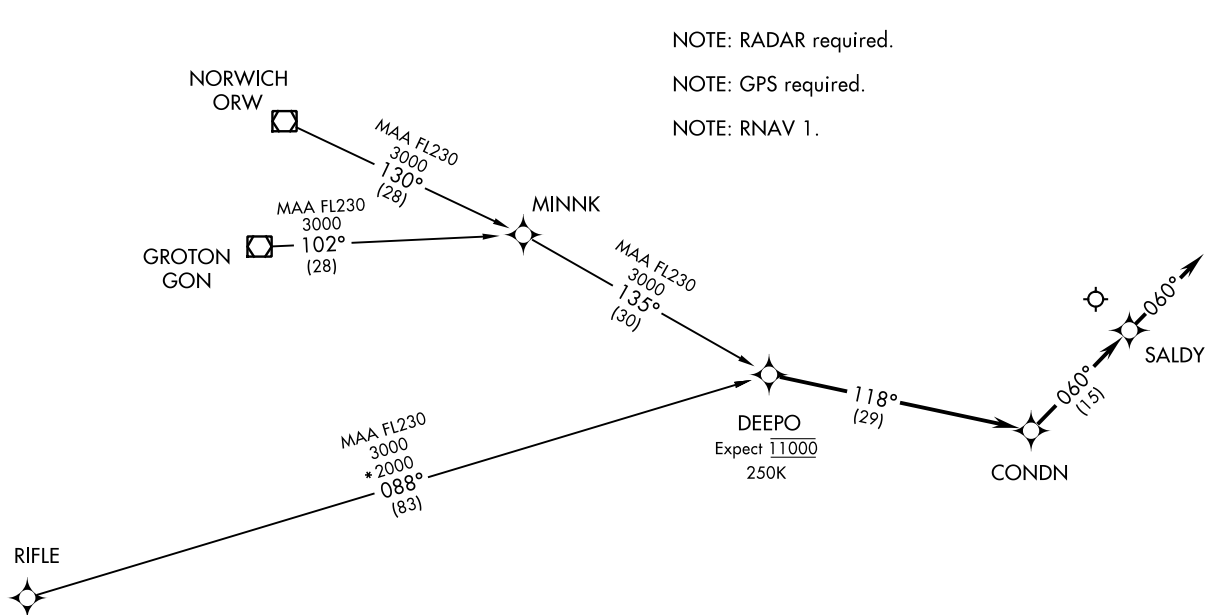
DEEPO ONE ARRIVAL (RNAV)  
(DEEPO.DEEPO1) 16JAN07

(DEEPO.DEEPO1) 17229  
DEEPO ONE ARRIVAL (RNAV)

ST-659 (FAA)

NANTUCKET MEMORIAL (A/CX)  
NANTUCKET, MASSACHUSETTS

NANTUCKET, MASSACHUSETTS  
NANTUCKET MEMORIAL (A/CX)

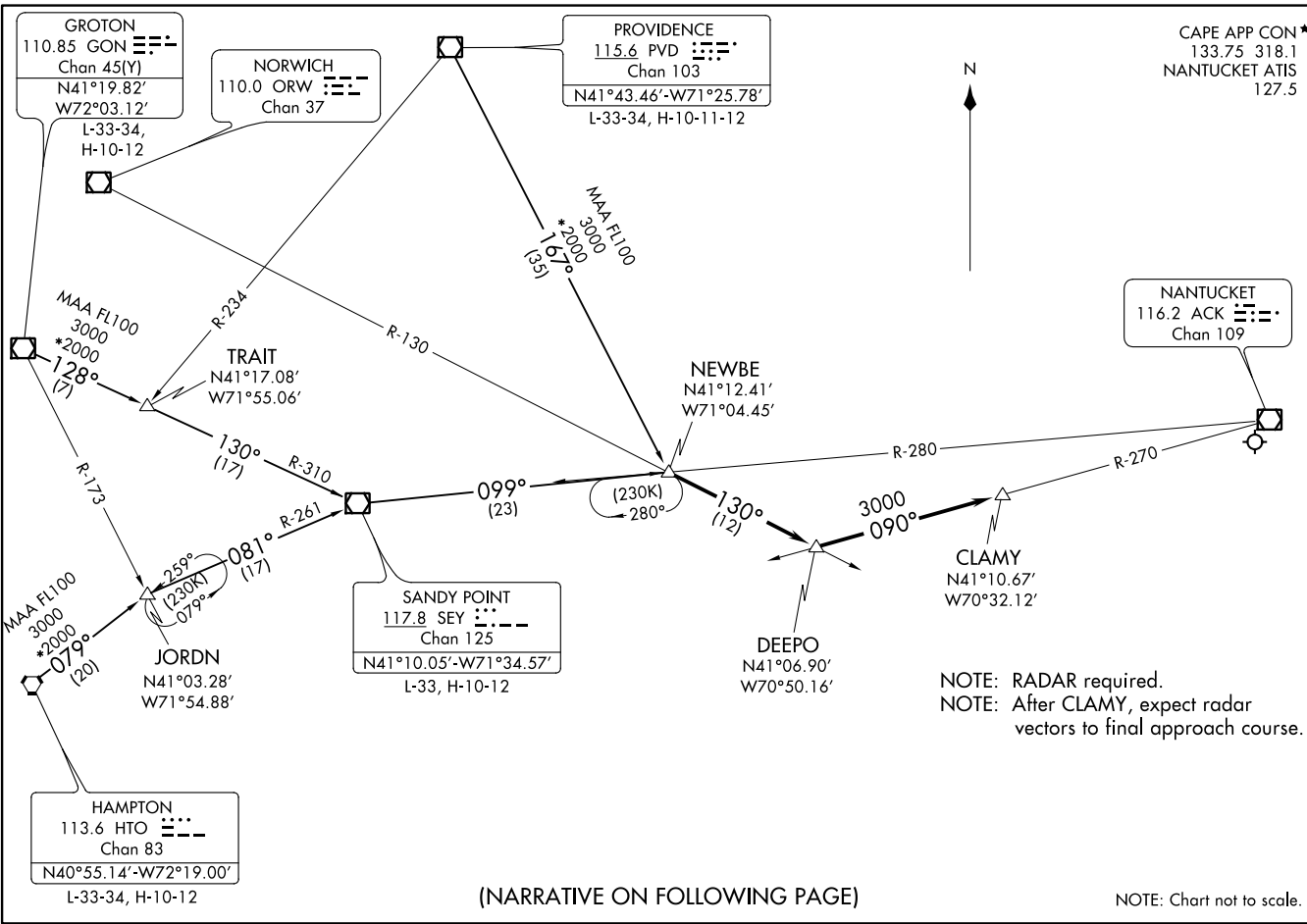


NOTE: RADAR required.  
NOTE: GPS required.  
NOTE: RNAV 1.

NOTE: Chart not to scale.

NEWBE TWO ARRIVAL  
(NEWBE, NEWBE2) 02MARI7

NANTUCKET, MASSACHUSETTS  
NANTUCKET MEMORIAL (A/CX)



(NARRATIVE ON FOLLOWING PAGE)

NOTE: Chart not to scale.

NEWBE, NEWBE2) 17229  
NEWBE TWO ARRIVAL

ST-659 (FAA)

NANTUCKET MEMORIAL (A/CX)  
NANTUCKET, MASSACHUSETTS

ARRIVAL DESCRIPTION

GORDON TRANSITION (GON.NEWBE2): From over GON VOR/DME on GON R-128 to TRAIT, then on SEY R-310 to SEY VOR/DME, then on SEY R-099 to NEWBE. Thence . . . .

HAMPTON TRANSITION (HTO.NEWBE2): From over HTO VORTAC on HTO R-079 to JORDN, then on SEY R-261 to SEY VOR/DME, then on SEY R-099 to NEWBE. Thence . . . .

PROVIDENCE TRANSITION (PVD.NEWBE2): From over PVD VOR/DME on PVD R-167 to NEWBE. Thence . . . .

. . . . From over NEWBE on ORW R-130 to DEEPO, then on ACK R-270 to CLAMY. After CLAMY, expect vectors to the final approach course.

NE-1, 17 AUG 2017 to 14 SEP 2017

NE-1, 17 AUG 2017 to 14 SEP 2017