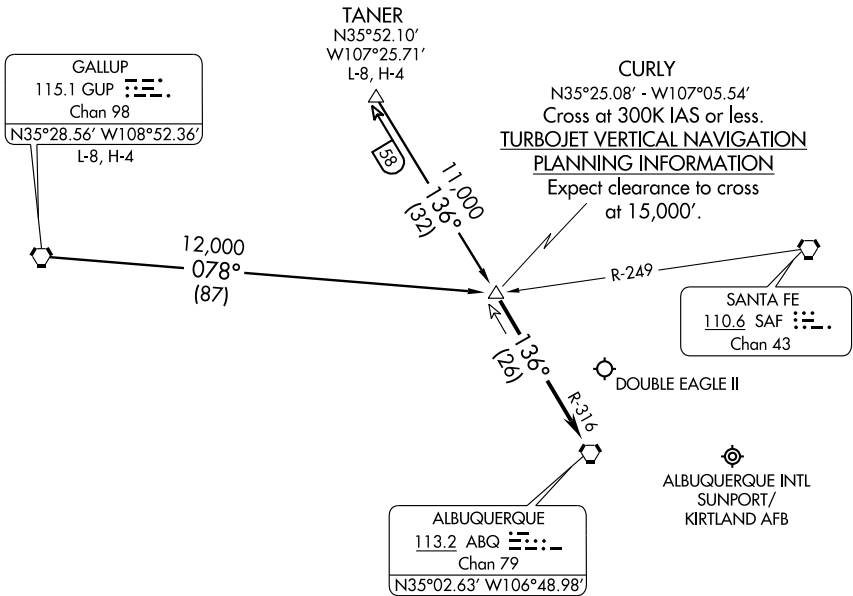


ALBUQUERQUE APP CON
127.4 253.5
ATIS 118.0 257.7



SW-1, 31 MAY 2012 to 28 JUN 2012

SW-1, 31 MAY 2012 to 28 JUN 2012

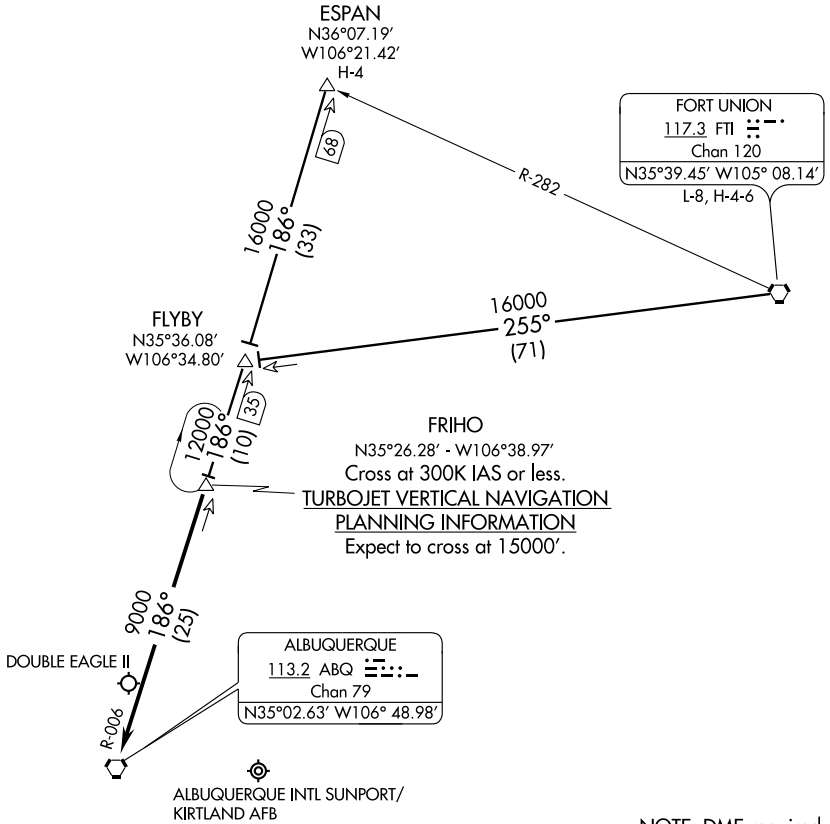
NOTE: This procedure applicable only to turboprop and turbojet aircraft operating at or above 15,000'.

NOTE: Chart not to scale.

GALLUP TRANSITION (GUP.CURLY2): From over GUP VORTAC via GUP R-078 to CURLY DME fix. Thence....

TANER TRANSITION (TANER.CURLY2): From over TANER INT via ABQ R-316 to CURLY DME fix. Thence....

...From over CURLY DME fix via ABQ R-316 to ABQ VORTAC. Expect vectors to final approach course after passing CURLY DME fix.



SW-1, 31 MAY 2012 to 28 JUN 2012

SW-1, 31 MAY 2012 to 28 JUN 2012

ESPAN TRANSITION (ESPAN.FRIHO4): From over ESPAN DME fix via ABQ R-006 to FRIHO DME fix, thence....

FORT UNION TRANSITION (FTI.FRIHO4): From over FTI VORTAC via FTI R-255 and ABQ R-006 to FRIHO DME fix, thence....

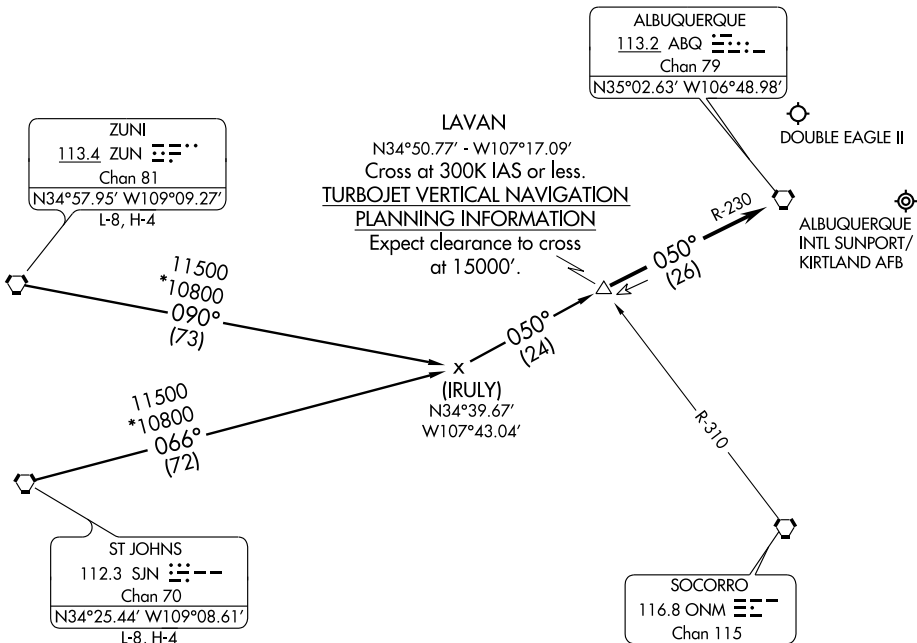
.... From over FRIHO DME fix via ABQ R-006 to ABQ VORTAC. Expect vectors to final approach course after passing FRIHO DME fix.

LAVAN THREE ARRIVAL

ST-12 (FAA)

ALBUQUERQUE, NEW MEXICO

ALBUQUERQUE APP CON
 123.9 354.1
 ALBUQUERQUE TOWER
 120.3 351.9
 GND CON
 121.9 348.6
 ATIS
 118.0 257.7



SW-1, 31 MAY 2012 to 28 JUN 2012

SW-1, 31 MAY 2012 to 28 JUN 2012

NOTE: Chart not to scale.

ST. JOHNS TRANSITION (SJN.LAVAN3): From over SJN VORTAC via SJN R-066 and ABQ R-230 to LAVAN DME/INT. Thence....

ZUNI TRANSITION (ZUN.LAVAN3): From over ZUN VORTAC via ZUN R-090 and ABQ R-230 to LAVAN DME/INT. Thence....

...From over LAVAN fix/INT via ABQ R-230 to ABQ VORTAC. Expect vectors to final approach course after passing LAVAN.

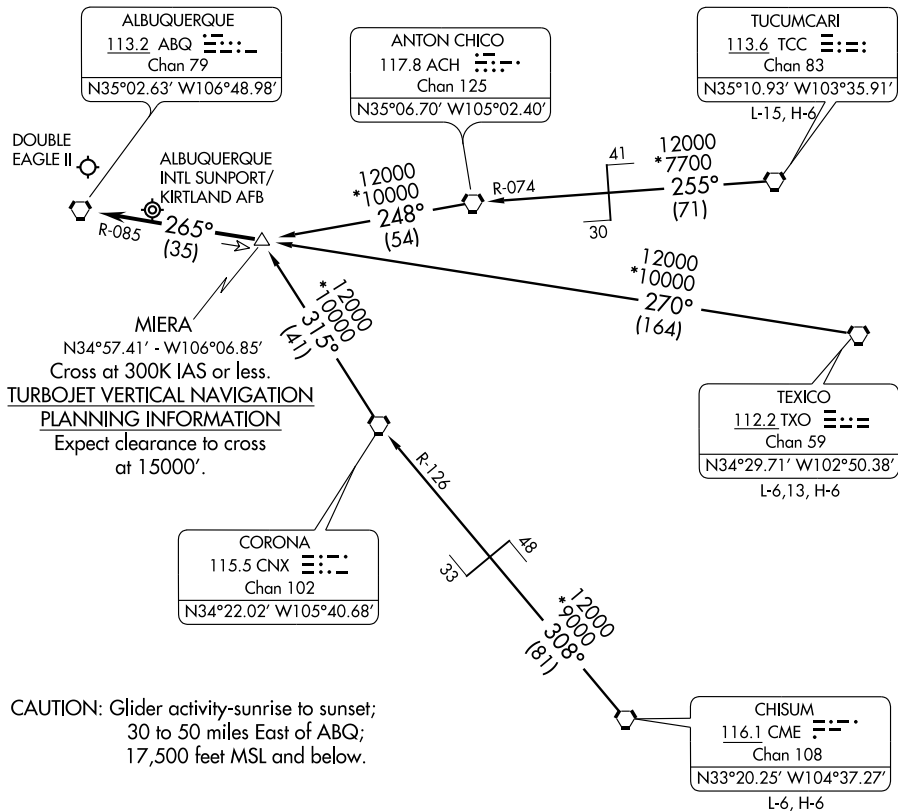
LAVAN THREE ARRIVAL

MIERA TWO ARRIVAL

ST-12 (FAA)

ALBUQUERQUE, NEW MEXICO

ALBUQUERQUE APP CON
123.9 354.1
ATIS
118.0 257.7



SW-1, 31 MAY 2012 to 28 JUN 2012

SW-1, 31 MAY 2012 to 28 JUN 2012

CAUTION: Glider activity-sunrise to sunset;
30 to 50 miles East of ABQ;
17,500 feet MSL and below.

NOTE: Chart not to scale.

CHISUM TRANSITION (CME.MIERA2): From over CME VORTAC via CME R-308 and CNX R-126 to CNX VORTAC, then via CNX R-315 to MIERA DME fix. Thence....

TEXICO TRANSITION (TXO.MIERA2): From over TXO VORTAC via TXO R-270 and ABQ R-085 to MIERA DME fix. Thence....

TUCUMCARI TRANSITION (TCC.MIERA2): From over TCC VORTAC via TCC R-255 and ACH R-074 to ACH VORTAC, then via ACH R-248 to MIERA DME fix. Thence....

....From over MIERA DME fix via ABQ R-085 to ABQ VORTAC. Expect vectors to final approach course after passing MIERA DME fix.

MIERA TWO ARRIVAL

ALBUQUERQUE, NEW MEXICO