

ATCHISON, KANSAS

AL-6617 (FAA)

16259

VOR/DME RBA	APP CRS	Rwy Idg	3000
108.2	142°	TDZE	1073
Chan 19		Apt Elev	1073

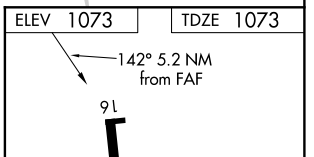
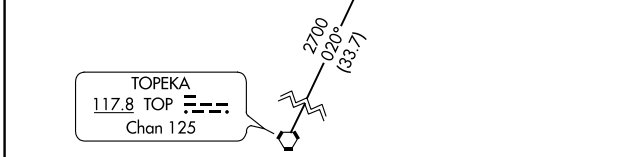
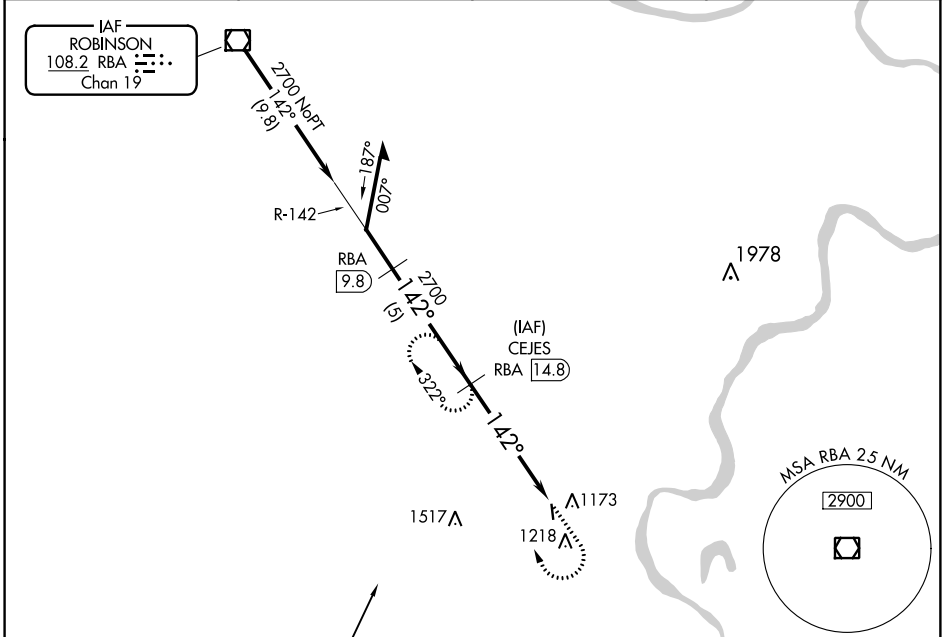
VOR/DME RWY 16

AMELIA EARHART (K59)

NA Use Kansas City Intl altimeter setting.

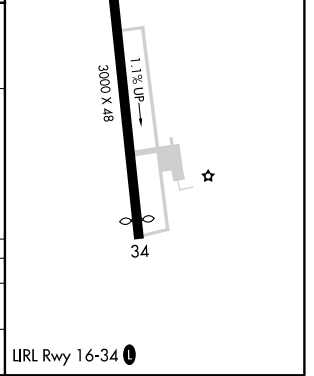
MISSED APPROACH: Climb to 2000 then climbing right turn to 2700 via RBA R-142 to CEJES/RBA 14.8 DME and hold.

AWOS-3 123.675	ST. JOSEPH APP CON ★ 120.35 360.8	UNICOM 122.8 (CTAF) 0
--------------------------	---	---------------------------------



Remain within 10 NM	CEJES RBA 14.8	2000	2700	CEJES RBA 14.8
2700	322°	↑	↻ RBA R-142	RBA 14.8
2700	142°			RBA 19.8
				5 NM
				0.2

CATEGORY	A	B	C	D
S-16	1540-1	467 (500-1)		NA
CIRCLING	1600-1	527 (600-1)		NA



ATCHISON, KANSAS
Orig-B 12NOV15

39°34'N-95°11'W

AMELIA EARHART (K59)

VOR/DME RWY 16

NC-2, 14 SEP 2017 to 12 OCT 2017

NC-2, 14 SEP 2017 to 12 OCT 2017

TAKEOFF MINIMUMS, (OBSTACLE) DEPARTURE PROCEDURES, AND

17229

DIVERSE VECTOR AREA (RADAR VECTORS)

INSTRUMENT APPROACH PROCEDURE CHARTS

IFR TAKEOFF MINIMUMS AND (OBSTACLE) DEPARTURE PROCEDURES

Civil Airports and Selected Military Airports

ALL USERS: Airports that have Departure Procedures (DPs) designed specifically to assist pilots in avoiding obstacles during the climb to the minimum enroute altitude, and/or airports that have civil IFR takeoff minimums other than standard, are listed below. Takeoff Minimums and Departure Procedures apply to all runways unless otherwise specified. Altitudes, unless otherwise indicated, are minimum altitudes in MSL.

DPs specifically designed for obstacle avoidance are referred to as Obstacle Departure Procedures (ODPs) and are textually described below, or published separately as a graphic procedure. If the ODP is published as a graphic procedure, its name will be listed below, and it can be found in either this volume (civil), or the applicable military volume, as appropriate. Users will recognize graphic obstacle DPs by the term "(OBSTACLE)" included in the procedure title; e.g., TETON TWO (OBSTACLE). If not specifically assigned an ODP, SID, or radar vector as part of an IFR clearance, an ODP may be required to be flown for obstacle clearance, even though not specifically stated in the IFR clearance. When doing so in this manner, ATC should be informed when the ODP being used contains a specified route to be flown, restrictions before turning, and/or altitude restrictions.

Some ODPs, which are established solely for obstacle avoidance, require a climb in visual conditions to cross the airport, a fix, or a NAVAID in a specified direction, at or above a specified altitude. These procedures are called Visual Climb Over Airport (VCOA). To ensure safe and efficient operations, the pilot must verbally request approval from ATC to fly the VCOA when requesting their IFR clearance.

At some locations where an ODP has been established, a diverse vector area (DVA) may be created to allow radar vectors to be used in lieu of an ODP. DVA information will state that headings will be as assigned by ATC and climb gradients, when applicable, will be published immediately following the specified departure procedure.

Graphic DPs designed by ATC to standardize traffic flows, ensure aircraft separation and enhance capacity are referred to as "Standard Instrument Departures (SIDs)". SIDs also provide obstacle clearance and are published under the appropriate airport section. ATC clearance must be received prior to flying a SID.

CIVIL USERS NOTE: Title 14 Code of Federal Regulations Part 91 prescribes standard takeoff rules and establishes takeoff minimums for certain operators as follows: (1) For aircraft, other than helicopters, having two engines or less – one statute mile visibility. (2) For aircraft having more than two engines – one-half statute mile visibility. (3) For helicopters – one-half statute mile visibility. These standard minima apply in the absence of any different minima listed below.

MILITARY USERS NOTE: Civil (nonstandard) takeoff minima are published below. For military takeoff minima, refer to appropriate service directives.

NAME	TAKEOFF MINIMUMS	NAME	TAKEOFF MINIMUMS
------	------------------	------	------------------

ABILENE, KS

ABILENE MUNI (K78)

TAKEOFF MINIMUMS AND (OBSTACLE)

DEPARTURE PROCEDURES

ORIG 11349 (FAA)

DEPARTURE PROCEDURE: **Rwy 35**, climb heading 353° to 2000 before turning right.

TAKEOFF OBSTACLE NOTES: **Rwy 17**, vehicle on road abeam DER, 460' right of centerline, 15' AGL/1164' MSL. Trees beginning 2455' from DER, 416' left of centerline, 100' AGL/1249' MSL. **Rwy 35**, trees beginning 745' from DER, 105' left of centerline, 100' AGL/1259' MSL. Railroad 738' from DER, on centerline, 23' AGL/1182' MSL.

AINSWORTH, NE

AINSWORTH RGNL (ANW)

TAKEOFF MINIMUMS AND (OBSTACLE)

DEPARTURE PROCEDURES

ORIG 08157 (FAA)

TAKEOFF OBSTACLE NOTES: **Rwy 31**, fence 81' from DER, 374' right of centerline, 3' AGL/2589' MSL.

ALBION, NE

ALBION MUNI (BVN)

TAKEOFF MINIMUMS AND (OBSTACLE)

DEPARTURE PROCEDURES

AMDT 1 08269 (FAA)

TAKEOFF OBSTACLE NOTES: **Rwy 15**, trees beginning 370' from DER, 72' left of centerline up to 98' AGL/1868' MSL. Fence and trees beginning 4' from DER, 114' right of centerline, up to 61' AGL/1831' MSL. **Rwy 33**, trees, vehicles, terrain, and equipment beginning 93' from DER, 24' right of centerline, up to 52' AGL/1871' MSL. Trees, building, and equipment 175' from DER, 12' left of centerline, up to 57' AGL/1863' MSL.

14 SEP 2017 to 12 OCT 2017

14 SEP 2017 to 12 OCT 2017

17229

TAKEOFF MINIMUMS, (OBSTACLE) DEPARTURE PROCEDURES, AND

DIVERSE VECTOR AREA (RADAR VECTORS)

TAKEOFF MINIMUMS, (OBSTACLE) DEPARTURE PROCEDURES, AND DIVERSE VECTOR AREA (RADAR VECTORS)

17229

ALMA, NE

ALMA MUNI (4D9)

TAKEOFF MINIMUMS AND (OBSTACLE)
DEPARTURE PROCEDURES
ORIG 15232 (FAA)

TAKEOFF MINIMUMS: **Rwy 35**, 300-2 or std. w min. climb of 224' per NM to 2500, or alternatively with standard takeoff minimums and a normal 200' per NM climb gradient, takeoff must occur no later than 2000' prior to DER.

TAKEOFF OBSTACLE NOTES: **Rwy 17**, trees and poles beginning 399' from DER, 318' right of centerline, up to 50' AGL/2099' MSL. Tree 678ft from DER, 317' left of centerline, up to 50' AGL/2089' MSL. **Rwy 35**, tree 4' from DER, 312' right of centerline, 50' AGL/2109' MSL. Vehicles on roads beginning 51' from DER, 161' right of centerline, up to 15' AGL/2082' MSL. Terrain beginning 58' from DER, 403' left of centerline, 2079' MSL. Vehicles on roads beginning 414' from DER, 250' left of centerline, up to 15' AGL/2095' MSL. Poles and trees beginning 523' from DER, 547' left of centerline, up to 50' AGL/2119' MSL. Irrigation arm 705' from DER, 459' left of centerline, 12' AGL/2091' MSL.

ANTHONY, KS

ANTHONY MUNI (ANY)

TAKEOFF MINIMUMS AND (OBSTACLE)
DEPARTURE PROCEDURES
ORIG 12152 (FAA)

TAKEOFF MINIMUMS: **Rwys 10, 28**, NA - environmental.

TAKEOFF OBSTACLE NOTES: **Rwy 18**, trees beginning at DER, 391' right of centerline, up to 25' AGL/1354' MSL. Building 598' from DER, 200' right of centerline, 20' AGL/1349' MSL. Power lines beginning 496' from DER, crossing centerline east to west, up to 32' AGL/1361' MSL. Beacon 701' from DER, 634' left of centerline, up to 60' AGL/1389' MSL. Antenna 1050' from DER, 40' right of centerline, 34' AGL/1363' MSL. **Rwy 36**, power lines beginning 1050' from DER, crossing centerline east to west, up to 32' AGL/1371' MSL. Trees beginning 67' from DER, 367' left of centerline, up to 25' AGL/1364' MSL.

ATCHISON, KS

AMELIA EARHART (K59)

TAKEOFF MINIMUMS AND (OBSTACLE)
DEPARTURE PROCEDURES
ORIG 11293 (FAA)

TAKEOFF OBSTACLE NOTES: **Rwy 16**, trees beginning 135' from DER, 291' left of centerline, up to 100' AGL/1177' MSL. Trees beginning 301' from DER, 230' right of centerline, up to 100' AGL/1161' MSL. Vehicle on road, 25' from DER, crossing centerline, 15' AGL/1093' MSL. **Rwy 34**, trees beginning 974' from DER, 639' left of centerline, up to 100' AGL/11 05' MSL. Trees beginning 85' from DER, 308' right of centerline, up to 100' AGL/1105' MSL. Vehicle on road, 25' from DER, crossing centerline, 15' AGL/1043' MSL.

ATKINSON, NE

STUART-ATKINSON MUNI (8V2)

TAKEOFF MINIMUMS AND (OBSTACLE)
DEPARTURE PROCEDURES
AMDT 1 12124 (FAA)

TAKEOFF MINIMUMS: **Rwys 5, 23**, NA - Environmental.
TAKEOFF OBSTACLE NOTES: **Rwy 29**, pole 585' from DER, 466' left of centerline, 36' AGL/2162' MSL.

ATWOOD, KS

ATWOOD-RAWLINS COUNTY CITY - CO (ADT)

TAKEOFF MINIMUMS AND (OBSTACLE)
DEPARTURE PROCEDURES
ORIG 10210 (FAA)

TAKEOFF MINIMUMS: **Rwys 17, 35, 3, 21**, NA - Environmental. **Rwy 16**, 300-1½ or std. w/ min. climb of 285' per NM to 3300.

TAKEOFF OBSTACLE NOTES: **Rwy 16**, tower 1.2 NM from DER, 352' left of centerline, 255' AGL/3125' MSL. **Rwy 34**, multiple poles beginning 402' from DER, 437' left of centerline, up to 31' AGL/3030' MSL. Vehicle on road 585' from DER, right to left of centerline, up to 15' AGL/3025' MSL.

AUGUSTA, KS

AUGUSTA MUNI (3AU)

TAKEOFF MINIMUMS AND (OBSTACLE)
DEPARTURE PROCEDURES
AMDT 1 12040 (FAA)

TAKEOFF OBSTACLE NOTES: **Rwy 18**, terrain, 51' from DER, 463' right of centerline, 1309' MSL. Vehicle on road, 102' from DER, left to right of centerline, up to 15' AGL/1324' MSL. Trees beginning 301' from DER, 489' left of centerline, up to 35' AGL/1344' MSL. **Rwy 36**, terrain and trees 21' from DER, 51' left of centerline, up to 35' AGL/1374' MSL. Terrain and trees 56' from DER, 155' right of centerline, up to 35' AGL/1374' MSL. Vehicle on road, 744' from DER, left to right of centerline, up to 17' AGL/1356' MSL.

AURORA, NE

AURORA MUNI - AL POTTER FIELD (AUH)

TAKEOFF MINIMUMS AND (OBSTACLE)
DEPARTURE PROCEDURES
ORIG 08269 (FAA)

TAKEOFF OBSTACLE NOTES: **Rwy 16**, trees beginning 74' from DER, 436' left of centerline, up to 70' AGL/1876' MSL. Vehicles on roadway beginning 396' from DER, left and right of centerline, up to 15' AGL/1814' MSL. Tree 614' from DER, 577' right of centerline, 50' AGL/1859' MSL. **Rwy 34**, fence 9' from DER, 470' left of centerline, 4' AGL/1806' MSL. Vehicles on roadway beginning 93' from DER, 511' left of centerline, up to 15' AGL/1824' MSL. Tree 135' from DER, 417' right of centerline, 12' AGL/1812' MSL. Wood power poles beginning 320' from DER, 289' left of centerline, up to 61' AGL/1863' MSL. Vehicles on roadway beginning 480' from DER, left and right of centerline, up to 15' AGL/1824' MSL. Trees beginning 722' from DER, 376' left of centerline, up to 46' AGL/1847' MSL. Chimney 770' from DER, 500' left of centerline, 24' AGL/1827' MSL. Antennas beginning 802' from DER, 479' left of centerline, up to 35' AGL/1835' MSL.

17229

TAKEOFF MINIMUMS, (OBSTACLE) DEPARTURE PROCEDURES, AND DIVERSE VECTOR AREA (RADAR VECTORS)

TAKEOFF MINIMUMS, (OBSTACLE) DEPARTURE PROCEDURES, AND DIVERSE VECTOR AREA (RADAR VECTORS)

17229

BASSETT, NE

ROCK COUNTY (RBE)
TAKEOFF MINIMUMS AND (OBSTACLE)
DEPARTURE PROCEDURES
AMDT2 10098 (FAA)
TAKEOFF MINIMUMS: **Rwys 2, 20**, NA-Environmental.
TAKEOFF OBSTACLE NOTES: **Rwy 13**, fence and trees beginning 12' from DER, 298' left of centerline, up to 60' AGL/2449' MSL. Fence and trees beginning 16' from DER, 320' right of centerline, up to 60' AGL/2459' MSL. **Rwy 31**, rising terrain, trees, and train on railroad tracks beginning 2' from DER, 155' left of centerline, up to 60' AGL/2409' MSL. Sign, obstruction light on airport beacon and multiple vehicles, towers, trees, fences, and fuel farms beginning 31' from DER, 330' right of centerline, up to 58' AGL/2403' MSL. Train on railroad tracks, multiple buildings, vehicles and trees beginning 353' from DER, 322' right of centerline, up to 80' AGL/2416' MSL.

BEATRICE, NE

BEATRICE MUNI (BIE)
TAKEOFF MINIMUMS AND (OBSTACLE)
DEPARTURE PROCEDURES
AMDT 1 11349 (FAA)
DEPARTURE PROCEDURE: **Rwy 18**, Climb heading 176° to 1900 before turning right.
TAKEOFF OBSTACLE NOTES: **Rwy 14**, trees beginning 696' from DER, 438' left of centerline, up to 51' AGL/1360' MSL. Light pole 1208' from DER, 212' left of centerline, 35' AGL/1344' MSL. **Rwy 32**, tree 859' from DER, 320' left of centerline, 27' AGL/1346' MSL. **Rwy 36**, trees beginning 779' from DER, 349' right of centerline, up to 58' AGL/1367' MSL. Tree 1193' from DER, 50' left of centerline, 48' AGL/1357' MSL.

BELLEVILLE, KS

BELLEVILLE MUNI (RPB)
TAKEOFF MINIMUMS AND (OBSTACLE)
DEPARTURE PROCEDURES
ORIG 11293 (FAA)
TAKEOFF MINIMUMS: **Rwys 14, 32**, NA - Environmental.
TAKEOFF OBSTACLE NOTES: **Rwy 18**, power pole 16' from DER, 394' left of centerline, 37' AGL/1557' MSL. Wind sock and buildings 33' from DER, 374' left of centerline, 60' AGL/1570' MSL. Beacon 136' from DER, 488' left of centerline, 69' AGL/1579' MSL. Trees and power pole beginning 129' from DER, 397' left of centerline 66' AGL/1576' MSL. Tree row 371' from DER, 162' left of centerline, 48' AGL/1558' MSL. Trees 354' from DER, 464' left of centerline, 62' AGL/1572' MSL. **Rwy 36**, train 693' from DER, right and left of centerline, 23' AGL/1552' MSL. Trees beginning 240' from DER, 285' right of centerline, 36' AGL/1546' MSL. Tree line 710' from DER, right and left of centerline, 45' AGL/1545' MSL.

BELOIT, KS

MORITZ MEMORIAL (K61)
TAKEOFF MINIMUMS AND (OBSTACLE)
DEPARTURE PROCEDURES
AMDT 1 94118 (FAA)
TAKEOFF MINIMUMS: **Rwys 4, 8, 22, 26**, NA.
DEPARTURE PROCEDURE: **Rwys 17, 35**, climb to 2400 before turning east on course.

17229

TAKEOFF MINIMUMS, (OBSTACLE) DEPARTURE PROCEDURES, AND DIVERSE VECTOR AREA (RADAR VECTORS)

BENTON, KS

LLOYD STEARMAN FIELD (1K1)
TAKEOFF MINIMUMS AND (OBSTACLE)
DEPARTURE PROCEDURES
ORIG 10210 (FAA)
TAKEOFF OBSTACLE NOTES: **Rwy 35**, vehicle on road beginning 20' from DER, left and right of centerline, up to 15' AGL/1384' MSL. Tree 2689' from DER, 1125' left of centerline, 100' AGL/1489' MSL.

BLAIR, NE

BLAIR MUNI (BTA)
TAKEOFF MINIMUMS AND (OBSTACLE)
DEPARTURE PROCEDURES
ORIG 09183 (FAA)
DEPARTURE PROCEDURE: **Rwy 13**, climb on a heading between 124° CCW to 314° from DER or minimum climb of 239' per NM to 3000 for all other courses.
TAKEOFF OBSTACLE NOTES: **Rwy 13**, rising terrain beginning at DER, 183' right of centerline, up to 1319' MSL. **Rwy 31**, trees beginning 434' from DER, 1' right of centerline, up to 35' AGL/1364' MSL.

BROKEN BOW, NE

BROKEN BOW MUNI/KEITH GLAZE FLD (BBW)
TAKEOFF MINIMUMS AND (OBSTACLE)
DEPARTURE PROCEDURES
AMDT 3 11013 (FAA)
TAKEOFF MINIMUMS: **Rwy 14**, 400-2 ¾ or std. w/ min. climb of 240' per NM to 3100. **Rwy 32**, 300-2 or std. w/ min. climb of 392' per NM to 3300.
TAKEOFF OBSTACLE NOTES: **Rwy 14**, satellite dish 202' from DER, 404' left of centerline, 43' AGL/2572' MSL. Numerous trees beginning 1446' from DER, 20' right and left of centerline, up to 44' AGL/2574' MSL. Numerous buildings beginning 2566' from DER, 562' right of centerline, up to 66' AGL/2599' MSL. Tower 2.3 NM from DER, 1852' right of centerline, 305' AGL/2931' MSL. **Rwy 32**, trees beginning 713' from DER, 661' left of centerline, up to 64' AGL/2623' MSL. Numerous trees beginning 1220' from DER, 654' right of centerline, up to 81' AGL/2647' MSL. Rising terrain beginning 1279' from DER, left and right of centerline, up to 2815' MSL.

BURLINGTON, KS

COFFEY COUNTY (UKL)
TAKEOFF MINIMUMS AND (OBSTACLE)
DEPARTURE PROCEDURES
ORIG 11181 (FAA)
TAKEOFF OBSTACLE NOTES: **Rwy 18**, vehicles on road beginning 291' from DER, 4' right of centerline, up to 10' AGL/1188' MSL. Vehicles on road beginning 105' from DER, 103' left of centerline, up to 10' AGL/1178' MSL. Terrain, 53' from DER, 434' right of centerline, 1175' MSL. **Rwy 36**, vehicles on road beginning 187' from DER, 238' left of centerline, up to 10' AGL/1186' MSL. Terrain, 77' from DER, 44' left of centerline, 1175' MSL.

14 SEP 2017 to 12 OCT 2017

14 SEP 2017 to 12 OCT 2017

TAKEOFF MINIMUMS, (OBSTACLE) DEPARTURE PROCEDURES, AND

DIVERSE VECTOR AREA (RADAR VECTORS)

17229

BURWELL, NE

CRAM FIELD (BUB)
TAKEOFF MINIMUMS AND (OBSTACLE)
DEPARTURE PROCEDURES
ORIG 13234 (FAA)

TAKEOFF OBSTACLE NOTES: **Rwy 15**, tree 3651' from DER, 81' right of centerline, 78' AGL/2278' MSL. Poles beginning 1011' from DER, 21' right of centerline, up to 47' AGL/2241' MSL. Trees and poles beginning 691' from DER, 104' left of centerline, up to 54' AGL/2241' MSL. **Rwy 33**, trees and pole beginning 366' from DER, 8' right of centerline, up to 105' AGL/2269' MSL. Trees beginning 759' from DER, 25' left of centerline, up to 93' AGL/2255' MSL.

CAMBRIDGE, NE

CAMBRIDGE MUNI (CSB)
TAKEOFF MINIMUMS AND (OBSTACLE)
DEPARTURE PROCEDURES
ORIG 16147 (FAA)

TAKEOFF OBSTACLE NOTES: **Rwy 15**, pole 444' from DER, 362' right of centerline, 30' AGL/2419' MSL. Tree 837' from DER, 35' right of centerline, 42' AGL/2422' MSL. **Rwy 33**, fence beginning 70' from DER, 292' right of centerline, up to 7' AGL/2428' MSL. Terrain beginning 187' from DER, 449' right of centerline, up to 2429' MSL.

CENTRAL CITY, NE

CENTRAL CITY MUNI-LARRY REINEKE
FIELD (07K)

TAKEOFF MINIMUMS AND (OBSTACLE)
DEPARTURE PROCEDURES
ORIG 11181 (FAA)

TAKEOFF OBSTACLE NOTES: **Rwy 16**, multiple power poles beginning 740' from DER, 57' right of centerline, up to 30' AGL/1746' MSL. Multiple power poles beginning 901' from DER, 64' left of centerline, up to 30' AGL/1746' MSL. Trees beginning 1765' from DER, 467' right of centerline, up to 59' AGL/1773' MSL. **Rwy 34**, trees beginning 1002' from DER, 260' right of centerline, up to 61' AGL/1773' MSL.

CHADRON, NE

CHADRON MUNI (CDR)
TAKEOFF MINIMUMS AND (OBSTACLE)
DEPARTURE PROCEDURES
AMDT 1 16035 (FAA)

TAKEOFF MINIMUMS: **Rwy 12**, std. w/min. climb of 240' per NM to 4800 or 1200-3 for climb in visual conditions. **Rwy 21**, 300-1½ or std. w/min. climb of 220' per NM to 3600, or alternatively, with standard takeoff minimums and a normal 200' per NM climb gradient, takeoff must occur no later than 1500' prior to DER.
DEPARTURE PROCEDURE: **Rwy 21**, climb heading 208° to 3900 before proceeding on course.

TAKEOFF OBSTACLE NOTES: **Rwy 3**, antenna on building 269' from DER, 225' right of centerline, 13' AGL/3276' MSL. Tree 346' from DER, 503' right of centerline, 40' AGL/3299' MSL. **Rwy 12**, fence beginning 163' from DER, 255' left of centerline, up to 10' AGL/3299' MSL. Pole 947' from DER, 591' right of centerline, 20' AGL/3322' MSL. Vehicles on road 1101' from DER, 445' right of centerline, up to 15' AGL/3315' MSL. **Rwy 21**, pole 1.2 NM from DER, 1669' left of centerline, 48' AGL/3495' MSL. **Rwy 30**, trees beginning 54' from DER, 455' right of centerline, up to 50' AGL/3323' MSL. Tree 1024' from DER, 756' left of centerline, 50' AGL/3332' MSL.

17229

TAKEOFF MINIMUMS, (OBSTACLE) DEPARTURE PROCEDURES, AND

DIVERSE VECTOR AREA (RADAR VECTORS)

CHANUTE, KS

CHANUTE MARTIN JOHNSON (CNU)
TAKEOFF MINIMUMS AND (OBSTACLE)
DEPARTURE PROCEDURES
ORIG 10154 (FAA)

DEPARTURE PROCEDURE: **Rwy 36**, climb heading 002° to 1500 before turning right.
TAKEOFF OBSTACLE NOTES: **Rwy 18**, trains on railroad beginning 210' from DER, from left to right of centerline, up to 23' AGL/1022' MSL. Trees beginning 2437' from DER, from left to right of centerline, up to 100' AGL/1079' MSL. **Rwy 36**, vehicles on road beginning 316' from DER, from left to right of centerline, up to 15' AGL/994' MSL. Trees beginning 447' from DER, 522' left of centerline, up to 100' AGL/1079' MSL. Trees beginning 519' from DER, 619' right of centerline, up to 100' AGL/1079' MSL.

CHAPPELL, NE

BILLY G RAY FIELD (CNP)
TAKEOFF MINIMUMS AND (OBSTACLE)
DEPARTURE PROCEDURES
ORIG 13066 (FAA)

TAKEOFF OBSTACLE NOTES: **Rwy 12**, vehicles on road 514' from DER, left and right of centerline, up to 15' AGL/3694' MSL. Vehicles on road 11' from DER, 461' right of centerline, up to 17' AGL/3706' MSL. Trees beginning 3059' from DER, 658' left of centerline, up to 100' AGL/3756' MSL. **Rwy 30**, trees beginning 764' from DER, 333' left of centerline, up to 100' AGL/3789' MSL. Trees beginning 1287' from DER, 658' right of centerline, up to 100' AGL/3779' MSL. Vehicles on road beginning 97' from DER, 505' left of centerline, up to 17' AGL/3696' MSL. Vehicles on road beginning 953' from DER, left and right of centerline, up to 17' AGL/3706' MSL.

CLAY CENTER, KS

CLAY CENTER MUNI (CYW)
TAKEOFF MINIMUMS AND (OBSTACLE)
DEPARTURE PROCEDURES
AMDT 1 11013 (FAA)

TAKEOFF OBSTACLE NOTES: **Rwy 17**, vehicle on road 450' from DER, left and right of centerline, 15' AGL/1221' MSL.

COFFEYVILLE, KS

COFFEYVILLE MUNI (CFV)
TAKEOFF MINIMUMS AND (OBSTACLE)
DEPARTURE PROCEDURES
AMDT 1 10210 (FAA)

TAKEOFF OBSTACLE NOTES: **Rwy 17**, trees beginning 3041' from DER, left and right of centerline, up to 100' AGL/849' MSL. **Rwy 35**, trees beginning 2442' from DER, left and right of centerline, up to 100' AGL/859' MSL.

14 SEP 2017 to 12 OCT 2017

14 SEP 2017 to 12 OCT 2017

TAKEOFF MINIMUMS, (OBSTACLE) DEPARTURE PROCEDURES, AND DIVERSE VECTOR AREA (RADAR VECTORS)

17229

COLBY, KS

SHALZ FIELD (CBK)

TAKEOFF MINIMUMS AND (OBSTACLE)
DEPARTURE PROCEDURES

ORIG 08269 (FAA)

TAKEOFF MINIMUMS: **Rwys 4, 12, 22, 30**, N/A-
Environmental.

TAKEOFF OBSTACLE NOTES: **Rwy 17**, terrain beginning 7' from DER, 193' right of centerline, up to 3156' MSL. Trees beginning 3708' from DER, 1072' right of centerline, up to 100' AGL/3249' MSL. Vehicle and road beginning 550' from DER, 35' left to right of centerline, 15' AGL/3174' MSL. **Rwy 35**, terrain beginning 205' from DER, 248' left of centerline, up to 3196' MSL.

COLDWATER, KS

COMANCHE COUNTY (3K8)

TAKEOFF MINIMUMS AND (OBSTACLE)
DEPARTURE PROCEDURES

ORIG 16203 (FAA)

DEPARTURE PROCEDURE: **Rwy 35**, climb heading
350° to 2600 before turning right.

TAKEOFF OBSTACLE NOTES: **Rwy 17**, vehicles on road, beginning 46' from DER, 412' right of centerline, up to 15' AGL/2082' MSL. Vehicle on road 625' from DER, 235' left of centerline, 2090' MSL. Vehicle on road 635' from DER, 350' left of centerline, 2092' MSL. Vehicle on road 641' from DER, 466' left of centerline, 2094' MSL. Tree 713' from DER, 559' left of centerline, 34' AGL/2116' MSL. Trees, beginning 808' from DER, 506' left of centerline, up to 54' AGL/2136' MSL. **Rwy 35**, fence, grd, beginning 46' from DER, 124' right of centerline, up to 7' AGL/2100' MSL. Fence 126' from DER, 304' left of centerline, 10' AGL/2093' MSL.

COLUMBUS, NE

COLUMBUS MUNI (OLU)

TAKEOFF MINIMUMS AND (OBSTACLE)
DEPARTURE PROCEDURES

AMDT 5A 13122 (FAA)

TAKEOFF MINIMUMS: **Rwys 2, 20** NA-Environmental.
TAKEOFF OBSTACLE NOTES: **Rwy 14**, multiple trees and antenna beginning 2378' from DER, 934' left of centerline, up to 71' AGL/1508' MSL. **Rwy 32**, multiple tree and towers beginning 2976' from DER, 284' right of centerline, 65' AGL/1525' MSL. Tower 3157' from DER, 254' left of centerline, 73' AGL/1527' MSL.

CONCORDIA, KS

BLOSSER MUNI (CNK)

TAKEOFF MINIMUMS AND (OBSTACLE)
DEPARTURE PROCEDURES

AMDT 1 99084 (FAA)

TAKEOFF MINIMUMS: **Rwys 3, 12, 21, 30**, NA.

COZAD, NE

COZAD MUNI (CZD)

TAKEOFF MINIMUMS AND (OBSTACLE)
DEPARTURE PROCEDURES

AMDT 1A 15232 (FAA)

TAKEOFF MINIMUMS: **Rwys 18, 36**, NA - Environmental.
Rwy 13, 200-1' or std. w/min. climb of 372' per NM to 2800.

TAKEOFF OBSTACLE NOTES: **Rwy 13**, grain elevators 3968' from DER, 103' right of centerline, 157' AGL/2678' MSL. Multiple poles beginning 13' from DER, 372' right of centerline, up to 43' AGL/2540' MSL. Multiple buildings beginning 97' from DER, 356' right of centerline, up to 18' AGL/2515' MSL. Fuel tank 22' from DER, 372' right of centerline, 13' AGL/2509' MSL. Elevator 3671' from DER, 392' left of centerline, 192' AGL/2668' MSL. Multiple trees beginning 222' from DER, 24' left of centerline, up to 68' AGL/2562' MSL. Grain elevator 5482' from DER, 1120' from DER, 170' AGL/2660' MSL. Building light 5439' from DER, 1086' left of centerline, 167' AGL/2657' MSL. Multiple light poles beginning 290' from DER, 370' left of centerline, up to 57' AGL/2551' MSL. Multiple satellite dishes beginning 870' from DER, 432' left of centerline, up to 54' AGL/2549' MSL. Multiple buildings beginning 141' from DER, 88' left of centerline, up to 56' AGL/2550' MSL. Fence 1' from DER, 369' left of centerline, 4' AGL/2500' MSL. Diving board 575' from DER, 572' left of centerline, 13' AGL/2513' MSL. **Rwy 31**, multiple trees and buildings beginning 136' from DER, 450' right of centerline, up to 100' AGL/2604' MSL. Building 608' from DER, 547' left of centerline, up to 50' AGL/2554' MSL.

CREIGHTON, NE

CREIGHTON MUNI (6K3)

TAKEOFF MINIMUMS AND (OBSTACLE)
DEPARTURE PROCEDURES

ORIG-A 15260 (FAA)

TAKEOFF MINIMUMS: **Rwy 18, 36**, NA-Environmental.
TAKEOFF OBSTACLE NOTES: **Rwy 13**, trees beginning 400' from DER, 328' left of centerline, up to 40' AGL/1689' MSL. Vehicle on road 421' from DER, 554' left of centerline, 15' AGL/1656' MSL. Building 663' from DER, 469' left of centerline, 25' AGL/1661' MSL. **Rwy 31**, trees beginning 766' from DER, 545' right of centerline, up to 40' AGL/1664' MSL.

CRETE, NE

CRETE MUNI (CEK)

TAKEOFF MINIMUMS AND (OBSTACLE)
DEPARTURE PROCEDURES

AMDT 1 08213 (FAA)

TAKEOFF MINIMUMS: **Rwys 13, 31**, NA - Environmental.
TAKEOFF OBSTACLE NOTES: **Rwy 17**, numerous trees 193' from DER, 164' left of centerline, 42' AGL/1509' MSL. Numerous trees 18' from DER, 298' right of centerline, 20' AGL/1486' MSL. **Rwy 35**, numerous trees and building 201' from DER, 259' right of centerline, 62' AGL/1580' MSL. Buildings 72' from DER, 400' left of centerline, 20' AGL/1514' MSL.

14 SEP 2017 to 12 OCT 2017

14 SEP 2017 to 12 OCT 2017

17229

TAKEOFF MINIMUMS, (OBSTACLE) DEPARTURE PROCEDURES, AND DIVERSE VECTOR AREA (RADAR VECTORS)

TAKEOFF MINIMUMS, (OBSTACLE) DEPARTURE PROCEDURES, AND DIVERSE VECTOR AREA (RADAR VECTORS)

17229

CURTIS, NE

CURTIS MUNI (47V)

TAKEOFF MINIMUMS AND (OBSTACLE)
DEPARTURE PROCEDURES
ORIG 15120 (FAA)

TAKEOFF MINIMUMS: **Rwy 17, 35**, NA-Environmental.
TAKEOFF OBSTACLE NOTES: **Rwy 12**, pole and light support structure 10' from DER, 9' left of centerline, 2' AGL/2663' MSL. Tree 90' from DER, 215' left of centerline, 60ft AGL/2687' MSL. Vehicle on road 277' from DER, 566' right of centerline, 17' AGL/2676' MSL. Trees, building and pole beginning 289ft from DER, 303' right of centerline, up to 60' AGL/2694' MSL.

Rwy 30, vehicles on roads beginning 6' from DER, 409' left of centerline, up to 15' AGL/2685' MSL. Trees beginning 310' from DER, 399' left of centerline, up to 60' AGL/2708' MSL. Electrical system and light support structure 10' from DER, 9' right of centerline, 2' AGL/2663' MSL. Vehicles on roads beginning 21' from DER, 277' right of centerline, up to 15' AGL/2694' MSL.

DAVID CITY, NE

DAVID CITY MUNI (93V)

TAKEOFF MINIMUMS AND (OBSTACLE)
DEPARTURE PROCEDURES
AMDT 1 09351 (FAA)

TAKEOFF MINIMUMS: **Rwys 1, 19**, NA-turf runway.
TAKEOFF OBSTACLE NOTES: **Rwy 32**, trees beginning at DER, 327' left of centerline, up to 29' AGL/1642' MSL. Trees beginning 1864' from DER, 99' left of centerline, up to 58' AGL/1671' MSL. Vehicle on highway 886' from DER, 711' left of centerline, 15' AGL/1636' MSL.

EL DORADO, KS

EL DORADO/CAPTAIN JACK THOMAS
MEMORIAL (EQA)

TAKEOFF MINIMUMS AND (OBSTACLE)
DEPARTURE PROCEDURES
ORIG 11069 (FAA)

TAKEOFF OBSTACLE NOTES: **Rwy 4**, tree 1819' from DER, 561' right of centerline, 100' AGL/1499' MSL. Vehicle on road 806' from DER, crossing centerline left to right, 15' AGL/1404' MSL. **Rwy 15**, trees beginning 963' from DER, 613' left of centerline, up to 100' AGL/1459' MSL. Tree 536' from DER, 507' right of centerline, 29' AGL/1399' MSL. Vehicle on road 556' from DER, crossing centerline right to left, 15' AGL/1394' MSL. **Rwy 22**, vehicle on road 267' from DER, crossing centerline right to left, 15' AGL/1394' MSL. Tree 1470' from DER, 538' left of centerline, 100' AGL/1469' MSL. **Rwy 33**, multiple trees beginning 43' from DER, 61' left of centerline, up to 100' AGL/1469' MSL. Vehicle on road 488' from DER, crossing centerline right to left, 15' AGL/1394' MSL.

ELKHART, KS

ELKHART-MORTON COUNTY (EHA)

TAKEOFF MINIMUMS AND (OBSTACLE)
DEPARTURE PROCEDURES
AMDT 1 10154 (FAA)

DEPARTURE PROCEDURE: **Rwy 22**, climb heading 221° to 4100 before turning right.
TAKEOFF OBSTACLE NOTES: **Rwy 4**, tree 181' from DER, 425' left of centerline, 100' AGL/3689' MSL. **Rwy 17**, multiple mobiles beginning 576' from DER, 79' left of centerline, up to 18' AGL/3635' MSL. Vehicles on road beginning 503' from DER, 202' right of centerline, up to 15' AGL/3633' MSL. Vehicles on road beginning 508' from DER, 1' left of centerline, up to 15' AGL/3632' MSL. Post 8' from DER, 306' left of centerline, 3' AGL/3619' MSL. **Rwy 22**, vehicle on road 255' from DER, 485' left of centerline, 15' AGL/3633' MSL. **Rwy 35**, Post 5' from DER, 321' left of centerline, 6' AGL/3609' MSL. Tree 337' from DER, 463' left of centerline, 100' AGL/3709' MSL.

EMPORIA, KS

EMPORIA MUNI (EMP)

TAKEOFF MINIMUMS AND (OBSTACLE)
DEPARTURE PROCEDURES
ORIG-A 16203 (FAA)

TAKEOFF MINIMUMS: **Rwy 6, 24**, NA-Environmental.
Rwy 19, 400-3 or std. w/min. climb of 225' per NM to 1800.
TAKEOFF OBSTACLE NOTES: **Rwy 1**, tree 70' from DER, 394' left of centerline, 1205' MSL. Vehicle on roads beginning 199' from DER, 417' left of centerline, up to 15' AGL/1208' MSL. Tree 490' from DER, 388' left of centerline, 1209' MSL. **Rwy 19**, tree and bush 66' from DER, 283' left of centerline, up to 40' AGL/1226' MSL. Tower 2.4 NM from DER, 3901' right of centerline, 300' AGL/1565' MSL.

EUREKA, KS

LT WILLIAM M MILLIKEN (13K)

TAKEOFF MINIMUMS AND (OBSTACLE)
DEPARTURE PROCEDURES
ORIG 84327 (FAA)

TAKEOFF MINIMUMS: **Rwy 18**, 600-3 or std. with a min. climb 345' per NM to 2000.

FAIRBURY, NE

FAIRBURY MUNI (FBY)

TAKEOFF MINIMUMS AND (OBSTACLE)
DEPARTURE PROCEDURES
ORIG 08213 (FAA)

TAKEOFF MINIMUMS: **Rwys 11, 29**, NA-VFR/Turf Rwy.
TAKEOFF OBSTACLE NOTES: **Rwy 17**, multiple trees beginning 7' from DER, 463' right of centerline, up to 53' AGL/1507' MSL. Multiple poles beginning 587' from DER, 481' right of centerline, up to 38' AGL/1492' MSL. Light tower 573' from DER, 612' right of centerline, 46' AGL/1501' MSL. Satellite dish 531' from DER, 571' right of centerline, up to 38' AGL/1494' MSL. **Rwy 35**, multiple poles beginning 93' from DER, 319' left of centerline, up to 29' AGL/1508' MSL. Poles beginning 849' from DER, 415' right of centerline, up to 26' AGL/1503' MSL. Fence 79' from DER, 417' left of centerline, 4' AGL/1483' MSL.

17229

TAKEOFF MINIMUMS, (OBSTACLE) DEPARTURE PROCEDURES, AND DIVERSE VECTOR AREA (RADAR VECTORS)

**TAKEOFF MINIMUMS, (OBSTACLE) DEPARTURE PROCEDURES, AND
DIVERSE VECTOR AREA (RADAR VECTORS)**

17229

FALLS CITY, NE**BRENNER FIELD (FNB)**

TAKEOFF MINIMUMS AND (OBSTACLE)
DEPARTURE PROCEDURES
AMDT 4 14345 (FAA)

DEPARTURE PROCEDURE: **Rwy 15**, climb heading 146° to 1500 before turning right.

TAKEOFF OBSTACLE NOTES: **Rwy 15**, trees beginning 197' from DER, right and left of centerline, up to 120' AGL/1005' MSL. Trees beginning 2604' from DER, 582' right of centerline, up to 120' AGL/1064' MSL. Poles beginning 256' from DER, left and right of centerline, up to 34' AGL/992' MSL. Catenary 293' from DER, 401' right of centerline, 31' AGL/989' MSL. **Rwy 33**, fence beginning 43' from DER, 300' right of centerline, up to 5' AGL/992' MSL. Trees beginning 70' from DER, 244' left of centerline, up to 120' AGL/1055' MSL. Trees beginning 696' from DER, 196' left of centerline, up to 120' AGL/1042' MSL.

FORT LEAVENWORTH, KS**SHERMAN AAF (FLV)**

TAKEOFF MINIMUMS AND (OBSTACLE)
DEPARTURE PROCEDURES
ORIG 05300 (FAA)

DEPARTURE PROCEDURE: **Rwy 16**, Climb via heading 155° to 1700 before turning southwest.

TAKEOFF OBSTACLE NOTES: **Rwy 16**, road 79' from DER, across departure course, up to 15' AGL/779' MSL. Building 400' from DER, 580' left of centerline, 28' AGL/788' MSL, pump house 444' from DER, 564' left of centerline, 23' AGL/783' MSL, boats 1063' from DER, across departure course, up to 45' AGL/800' MSL, trees 2165' from DER, across departure course, up to 75' AGL/838' MSL. **Rwy 34**, multiple trees and poles beginning 117' from DER on centerline, up to 100' AGL/879' MSL, levee 187' from DER, on centerline, 35' AGL/782' MSL.

FORT SCOTT, KS**FORT SCOTT MUNI (FSK)**

TAKEOFF MINIMUMS AND (OBSTACLE)
DEPARTURE PROCEDURES
ORIG 07242 (FAA)

TAKEOFF OBSTACLE NOTES: **Rwy 18**, multiple trees beginning 673' from DER, 275' left of centerline, up to 43' AGL/962' MSL. Vehicle on road 621' from DER, 25' left of centerline, 15' AGL/935' MSL. Tree 654' from DER, 214' right of centerline, 28' AGL/947' MSL. Fence 193' from DER, 370' right of centerline, 8' AGL/926' MSL. **Rwy 36**, multiple trees beginning 137' from DER, 305' left of centerline, up to 43' AGL/952' MSL. Fence 204' from DER, 284' left of centerline, 8' AGL/911' MSL. Multiple trees beginning 359' from DER, 399' right of centerline, up to 44' AGL/933' MSL.

FREMONT, NE**FREMONT MUNI (FET)**

TAKEOFF MINIMUMS AND (OBSTACLE)
DEPARTURE PROCEDURES
AMDT 6A 13346 (FAA)

TAKEOFF MINIMUMS: **Rwy 14**, 300-1½ or std. w/min. climb of 255' per NM to 1500. **Rwy 19**, 600-2½ or std. w/min. climb of 370' per NM to 2000.

DEPARTURE PROCEDURE: **Rwy 19**, climb heading 188° to 1800 before turning right.

TAKEOFF OBSTACLE NOTES: **Rwy 1**, vehicles on roads beginning 176' from DER, left and right of centerline, up to 15' AGL/ 1224' MSL. Trees beginning 848' from DER, left and right of centerline, up to 100' AGL/ 1299' MSL. Trees beginning 3317' from DER, left and right of centerline, up to 100' AGL/ 1299' MSL. **Rwy 14**, vegetation located 16' from DER, left and right of centerline, up to 5' AGL/1205' MSL. Multiple trees beginning 691' from DER, left and right of centerline, up to 100' AGL/1275' MSL. Tower located 1548' from DER, 674' left of centerline, 50' AGL/1250' MSL. Building located 1.1 NM from DER, 53' left of centerline, 216' AGL/1413' MSL. **Rwy 19**, vehicles on roads beginning 717' from DER, left and right of centerline, up to 15' AGL/1224' MSL. Multiple trees beginning 816' from DER, left and right of centerline, up to 100' AGL/1282' MSL. Antenna and tower located 2.1 NM from DER, 2098' right of centerline, up to 369' AGL/1719' MSL. **Rwy 32**, vegetation beginning 104' from DER, 483' left of centerline, up to 9' AGL/1209' MSL. Vehicles on road and poles beginning 422' from DER, left and right of centerline, up to 25' AGL/1230' MSL. Street lights beginning 584' from DER, 460' right of centerline, up to 41' AGL/1246' MSL. Multiple trees beginning 1060' from DER, 176' left of centerline, up to 100' AGL/1273' MSL.

GARDEN CITY, KS**GARDEN CITY RGNL (GCK)**

TAKEOFF MINIMUMS AND (OBSTACLE)
DEPARTURE PROCEDURES
ORIG 07186 (FAA)

TAKEOFF OBSTACLE NOTES: **Rwy 12**, multiple trees beginning 585' from DER, 431' left of centerline, up to 52' AGL/2926' MSL.

GOODLAND, KS**RENNER FIELD/GOODLAND MUNI (GLD)**

TAKEOFF MINIMUMS AND (OBSTACLE)
DEPARTURE PROCEDURES
AMDT 5 11069 (FAA)

TAKEOFF MINIMUMS: **Rwys 17, 35**, NA- Environmental. DEPARTURE PROCEDURE: **Rwy 23**, climb heading 234° to 4300 before turning left.

TAKEOFF OBSTACLE NOTES: **Rwy 12**, vehicle on road 510' from DER, 544' left of centerline, 15' AGL/3665' MSL. **Rwy 23**, vehicle on road 683' from DER, 167' right of centerline, 15' AGL/3679' MSL. **Rwy 30**, trees beginning 153' from DER, 241' left of centerline, 15' AGL/3659' MSL. Silo 721' from DER, 567' left of centerline, 36' AGL/3675' MSL. Tree 1096' from DER, 641' right of centerline, 35' AGL/3674' MSL.

14 SEP 2017 to 12 OCT 2017

14 SEP 2017 to 12 OCT 2017

17229

**TAKEOFF MINIMUMS, (OBSTACLE) DEPARTURE PROCEDURES, AND
DIVERSE VECTOR AREA (RADAR VECTORS)**

TAKEOFF MINIMUMS, (OBSTACLE) DEPARTURE PROCEDURES, AND DIVERSE VECTOR AREA (RADAR VECTORS)

17229

GORDON, NE

GORDON MUNI (GRN)
TAKEOFF MINIMUMS AND (OBSTACLE)
DEPARTURE PROCEDURES
AMDT 2A 11097 (FAA)
TAKEOFF MINIMUMS: **Rwy 29**, 300-1.
DEPARTURE PROCEDURE: **Rwys 22, 29**, climb
runway heading to 4400 before turning.
TAKEOFF OBSTACLE NOTES: **Rwy 22**, trees
beginning 909' from DER, 24' right of centerline, up to
56' AGL/3594' MSL. Trees beginning 555' from DER,
109' left of centerline, up to 73' AGL/3622' MSL. Tree
1515' from DER, on centerline, up to 43' AGL/3593'
MSL.

GOTHENBURG, NE

GOTHENBURG MUNI (GTE)
TAKEOFF MINIMUMS AND (OBSTACLE)
DEPARTURE PROCEDURES
AMDT 1A 17229 (FAA)
TAKEOFF MINIMUMS: **Rwy 32**, 300-1 or std. with a
min. climb of 300' per NM to 2800.

GRAND ISLAND, NE

CENTRAL NEBRASKA RGNL (GRI)
TAKEOFF MINIMUMS AND (OBSTACLE)
DEPARTURE PROCEDURES
ORIG 07354 (FAA)
TAKEOFF OBSTACLE NOTES: **Rwy 13**, tree 1334'
from DER, 730' left of centerline, 39' AGL/1881' MSL.

GRANT, NE

GRANT MUNI (GGF)
TAKEOFF MINIMUMS AND (OBSTACLE)
DEPARTURE PROCEDURES
ORIG 08213 (FAA)
TAKEOFF OBSTACLE NOTES: **Rwy 15**, post 7' from
DER, 297' left of centerline, 4' AGL/3424' MSL. Post 5'
from DER, 300' left of centerline, 5' AGL/3424' MSL.
Road with vehicle 524' from DER, 525' left of
centerline, 17' AGL/3442' MSL. Trees beginning 128'
from DER, 304' left of centerline, up to 100' AGL/3442'
MSL. **Rwy 33**, terrain 107' from DER, 352' left of
centerline, 0' AGL/3426' MSL. Fence 226' from DER,
505' left of centerline, 8' AGL/3430' MSL. Terrain
beginning 102' from DER, 199' right of centerline, up to
0' AGL/3429' MSL. Fence 3' from DER, 496' right of
centerline, 4' AGL/3426' MSL.

GREAT BEND, KS

GREAT BEND MUNI (GBD)
TAKEOFF MINIMUMS AND (OBSTACLE)
DEPARTURE PROCEDURES
ORIG 08325 (FAA)
DEPARTURE PROCEDURE: **Rwy 35**, climb heading
352° to 3200 before turning eastbound.
TAKEOFF OBSTACLE NOTES: **Rwy 35**, tree 1312'
from DER, 826' left of centerline, 62' AGL/1946' MSL.

17229

TAKEOFF MINIMUMS, (OBSTACLE) DEPARTURE PROCEDURES, AND DIVERSE VECTOR AREA (RADAR VECTORS)

HARTINGTON, NE

HARTINGTON MUNI/BUD BECKER FIELD
(0B4)
TAKEOFF MINIMUMS AND (OBSTACLE)
DEPARTURE PROCEDURES
ORIG-A 16035 (FAA)
TAKEOFF MINIMUMS: **Rwy 3, 21**, NA-Environmental.
DEPARTURE PROCEDURE: **Rwy 31**, Climb heading 315°
to 1900 before turning right.
TAKEOFF OBSTACLE NOTES: **Rwy 13**, vehicles on road
beginning 21' from DER, left and right of centerline, up to
15' AGL/1425' MSL. Terrain 137' from DER, 493' right of
centerline 1424' MSL. Trees beginning 48' from DER,
269' left of centerline, up to 50' AGL/1415' MSL. **Rwy 31**,
trees beginning 1064' from DER, 742' left of centerline,
up to 50' AGL/1495' MSL. Antenna towers beginning
2581' from DER, 346' left of centerline, 90' AGL/1489'
MSL. Utility poles and signs beginning 3029' from DER,
929' left of centerline, 85' AGL/1484' MSL. Building peaks
beginning 3173' from DER, 35' left of centerline, 90'
AGL/1513' MSL. Light pole 3776' from DER, 1117' left of
centerline, 85' AGL/1512' MSL. Utility pole 3518' from
DER, 1144' left of centerline, 98' AGL/1513' MSL.
Smokestack 3791' from DER. 1042' left of centerline, 80'
AGL/1489' MSL. Trees and building peaks beginning
3257' from DER, 250' right of centerline, up to 100'
AGL/1475' MSL.

HARVARD, NE

HARVARD STATE (08K)
TAKEOFF MINIMUMS AND (OBSTACLE)
DEPARTURE PROCEDURES
ORIG 11013 (FAA)
TAKEOFF MINIMUMS: **Rwys 4, 32**, NA-Environmental.
Rwy 35, std. w/ min. climb of 232' per NM to 3500 or
1100-3 for climb in visual conditions.
DEPARTURE PROCEDURE: **Rwy 35**, For climb in visual
conditions: cross Harvard State Airport at or above 2800
before proceeding on course.
TAKEOFF OBSTACLE NOTES: **Rwy 35**, terrain 39' from
DER, 451' left of centerline, 1818' MSL.

HASTINGS, NE

HASTINGS MUNI (HSI)
TAKEOFF MINIMUMS AND (OBSTACLE)
DEPARTURE PROCEDURES
AMDT 3 09071 (FAA)
DEPARTURE PROCEDURE: **Rwy 4**, climb heading 090°
to 3000 before proceeding on course. **Rwy 32**, climb
heading 323° to 2500 before turning right.
TAKEOFF OBSTACLE NOTES: **Rwy 14**, vehicle on road
202' from DER, 386' left of centerline, 15' AGL/1952'
MSL. Tree 625' from DER, 498' right of centerline, 17'
AGL/1961' MSL. Light pole 620' from DER, 657' right of
centerline, 35' AGL/1977' MSL. Multiple trees beginning
835' from DER, 558' left of centerline, up to 61'
AGL/2010' MSL.

HAYS, KS

HAYS RGNL (HYS)
TAKEOFF MINIMUMS AND (OBSTACLE)
DEPARTURE PROCEDURES
AMDT 2 92180 (FAA)
DEPARTURE PROCEDURE: **Rwy 34**, westbound
departures (160° CW 340°) climb runway heading 3100
before proceeding on course.

14 SEP 2017 to 12 OCT 2017

14 SEP 2017 to 12 OCT 2017

TAKEOFF MINIMUMS, (OBSTACLE) DEPARTURE PROCEDURES, AND DIVERSE VECTOR AREA (RADAR VECTORS)

17229

HEBRON, NE

HEBRON MUNI (HJH)

TAKEOFF MINIMUMS AND (OBSTACLE)
DEPARTURE PROCEDURES

ORIG 85115 (FAA)

TAKEOFF MINIMUMS: **Rwys 3,12,21,30**, 300-1.DEPARTURE PROCEDURE: **All Rwys**: climb straight ahead to 1700 before proceeding on course.

HERINGTON, KS

HERINGTON RGNL (HRU)

TAKEOFF MINIMUMS AND (OBSTACLE)
DEPARTURE PROCEDURES

ORIG 11013 (FAA)

TAKEOFF MINIMUMS: **Rwy 17**, 400 - 2½ or std. w/min. climb of 215' per NM to 2000, or alternatively, with standard takeoff minimums and a normal 200' per NM climb gradient. Takeoff must occur no later than 1800' prior to DER.DEPARTURE PROCEDURE NOTES: **Rwy 17**, tower 2 NM from DER, 3564' right of centerline, 318' AGL/1808' MSL.

HILL CITY, KS

HILL CITY MUNI (HLC)

TAKEOFF MINIMUMS AND (OBSTACLE)
DEPARTURE PROCEDURES

AMDT 1 13178 (FAA)

DEPARTURE PROCEDURE: **Rwy 36**, climb heading 356° to 3000 before turning left.TAKEOFF OBSTACLE NOTES: **Rwy 18**, vehicles on road beginning 429' from DER, left and right of centerline, up to 15' AGL/2204' MSL. Trees beginning 359' from DER, left and right of centerline, up to 70' AGL/2217' MSL. **Rwy 36**, rising terrain beginning 117' from DER, 305' right of centerline, up to 2252' MSL. Bushes beginning 158' from DER, 196' right of centerline, up to 5' AGL/2255' MSL. Poles beginning 2432' from DER, 785' right of centerline, up to 50' AGL/2311' MSL. Tree 3476' from DER, 1223' right of centerline, up to 20' AGL/2329' MSL.

HOLDREGE, NE

BREWSTER FIELD (HDE)

TAKEOFF MINIMUMS AND (OBSTACLE)
DEPARTURE PROCEDURES

AMDT 2 98113 (FAA)

TAKEOFF MINIMUMS: **Rwys 11, 29**, NA.DEPARTURE PROCEDURE: **Rwy 18**, climb runway heading to 3800 before turning right. **Rwy 36**, climb runway heading to 3600 before turning left.

HUGOTON, KS

HUGOTON MUNI (HQQ)

TAKEOFF MINIMUMS AND (OBSTACLE)
DEPARTURE PROCEDURES

AMDT 1 07186 (FAA)

TAKEOFF MINIMUMS: **Rwy 31**, NA-obstacles.DEPARTURE PROCEDURE: **Rwy 2**, climb heading 016° to 3800 before turning right.TAKEOFF OBSTACLE NOTES: **Rwy 2**, multiple poles, hangars, and vehicle on road beginning 25' from DER, 334' left of centerline, up to 43' AGL/3167' MSL. Pole and fence beginning 19' from DER, 304' right of centerline, up to 33' AGL/3157' MSL. **Rwy 20**, vehicle on road 11' from DER, 371' right of centerline, 15' AGL/3153' MSL. Vehicle on road 203' from DER, 369' left of centerline, 15' AGL/3148' MSL.

HUTCHINSON, KS

HUTCHINSON RGNL (HUT)

TAKEOFF MINIMUMS AND (OBSTACLE)
DEPARTURE PROCEDURES

AMDT 5 11013 (FAA)

DEPARTURE PROCEDURE: **Rwy 4**, climb heading 036° to 3100 before proceeding east. **Rwy 13**, climb heading 132° to 3100 before proceeding east. **Rwy 17**, climb heading 171° to 2700 before proceeding east. **Rwy 22**, climb heading 216° to 2400 before proceeding east. **Rwy 31**, climb heading 312° to 2400 before proceeding east. **Rwy 35**, climb heading 351° to 2400 before proceeding east.TAKEOFF OBSTACLE NOTES: **Rwy 4**, vehicle on road, 53' from DER, 62' right of centerline, up to 15' AGL/1559' MSL. Trees beginning 50' from DER, 418' left of centerline, up to 100' AGL/1636' MSL. Trees beginning 11' from DER, 231' right of centerline, up to 100' AGL/1693' MSL. **Rwy 13**, trees beginning 5' from DER, 225' left of centerline, up to 100' AGL/1564' MSL. Tower 1484' from DER, 778' left of centerline, 70' AGL/1584' MSL. Vehicle on road, 1' from DER, 203' right of centerline, up to 15' AGL/1529' MSL. Antennas and trees beginning 650' from DER, 312' right of centerline, up to 100' AGL/1561' MSL. **Rwy 17**, vehicles on road, 267' from DER, left and right of centerline, up to 15' AGL/1532' MSL. Light on fence 209' from DER, 537' right of centerline, 11' AGL/1526' MSL. **Rwy 22**, light on tower, 3505' from DER, 1229' left of centerline, 131' AGL/1646' MSL. Poles, trees, lights, and buildings beginning 95' from DER, 281' left of centerline, up to 100' AGL/1567' MSL. **Rwy 31**, vehicles on road, 39' from DER, 111' left of centerline, up to 15' AGL/1539' MSL. Trees beginning 1439' from DER, 689' left of centerline, up to 100' AGL/1572' MSL. Tree 2669' from DER, 1097' right of centerline, up to 100' AGL/1599' MSL. **Rwy 35**, tree 112' from DER, 486' left of centerline, up to 100' AGL/1550' MSL. Multiple trees beginning 76' from DER, 155' right of centerline, up to 100' AGL/1564' MSL.

14 SEP 2017 to 12 OCT 2017

14 SEP 2017 to 12 OCT 2017

17229

TAKEOFF MINIMUMS, (OBSTACLE) DEPARTURE PROCEDURES, AND DIVERSE VECTOR AREA (RADAR VECTORS)

TAKEOFF MINIMUMS, (OBSTACLE) DEPARTURE PROCEDURES, AND DIVERSE VECTOR AREA (RADAR VECTORS)

17229

IMPERIAL, NE

IMPERIAL MUNI (IML)

TAKEOFF MINIMUMS AND (OBSTACLE)

DEPARTURE PROCEDURES

AMDT 2A 16063 (FAA)

TAKEOFF MINIMUMS: **Rwy 3,21**, NA-Environmental.DEPARTURE PROCEDURE: **Rwy 31**, climb heading 315° to 3700 before turning left.TAKEOFF OBSTACLE NOTES: **Rwy 13**, fence 58' from DER, 249' left of centerline, 4' AGL/3272' MSL.

Vehicles on road and railroad beginning 251' from DER, 558' right of centerline, up to 23' AGL/3293' MSL. **Rwy 31**, signs beginning 777' from DER, 292' left of centerline, up to 23' AGL/3298' MSL. Light poles and power poles beginning 876' from DER, 326' left of centerline to 1476' from DER, 75' right of centerline, up to 41' AGL/3316' MSL.

INDEPENDENCE, KS

INDEPENDENCE MUNI (IDP)

TAKEOFF MINIMUMS AND (OBSTACLE)

DEPARTURE PROCEDURES

ORIG 08325 (FAA)

TAKEOFF OBSTACLE NOTES: **Rwy 4**, trees beginning 2911' from DER, 1236' left of centerline, up to 100' AGL/929' MSL. Tree 1878' from DER, 236' right of centerline, 52' AGL/871' MSL. **Rwy 17**, trees beginning 1402' from DER, 696' left of centerline, up to 31' AGL/860' MSL. **Rwy 35**, obstruction light on DME 1002' from DER, 256' right of centerline, 20' AGL/849' MSL. Trees beginning 2515' from DER, 994' right of centerline, up to 100' AGL/929' MSL.

IOLA, KS

ALLEN COUNTY (K88)

TAKEOFF MINIMUMS AND (OBSTACLE)

DEPARTURE PROCEDURES

ORIG 09071 (FAA)

TAKEOFF OBSTACLE NOTES: **Rwy 1**, trees 1280' from DER, 485' right of centerline, 100' AGL/1109' MSL. **Rwy 19**, vehicle on road 28' from DER, 501' right of centerline, 15' AGL/1024' MSL. Terrain beginning 69' from DER, 229' right of centerline, up to 1014' MSL. Trees 2240' from DER, 1068' right of centerline, 100' AGL/1109' MSL. Trees 2381' from DER, 621' left of centerline, 100' AGL/1089' MSL.

JETMORE, KS

JETMORE MUNI (K79)

TAKEOFF MINIMUMS AND (OBSTACLE)

DEPARTURE PROCEDURES

ORIG 17117 (FAA)

TAKEOFF OBSTACLE NOTES: **Rwy 17**, electric sys, light support structure beginning 8' from DER, 38' left of centerline, up to 3' AGL/2468' MSL. electric sys, light support structure beginning 10' from DER, 38' right of centerline, up to 3' AGL/2468' MSL. trees beginning 394' from DER, 524' left of centerline, up to 2506' MSL. **Rwy 35**, electric sys, light support structure beginning 10' from DER, 39' left of centerline, up to 2' AGL/2465' MSL. road beginning 103' from DER, 170' right of centerline, up to 2478' MSL. trees beginning 372' from DER, 294' right of centerline, up to 2508' MSL.

17229

TAKEOFF MINIMUMS, (OBSTACLE) DEPARTURE PROCEDURES, AND DIVERSE VECTOR AREA (RADAR VECTORS)

JOHNSON, KS

STANTON COUNTY MUNI (JHN)

TAKEOFF MINIMUMS AND (OBSTACLE)

DEPARTURE PROCEDURES

ORIG 10322 (FAA)

TAKEOFF OBSTACLE NOTES: **Rwy 17**, hangar 517' from DER, 539' right of centerline, 18' AGL/3342' MSL.

Rwy 26, hangar 373' from DER, 315' left of centerline, 18' AGL/3342' MSL. Vehicle on road beginning 529' from DER, on centerline, 15' AGL/3339' MSL. Trees beginning 704' from DER, 66' left of centerline, up to 40' AGL/3364' MSL.

JUNCTION CITY, KS

FREEMAN FIELD (3JC)

TAKEOFF MINIMUMS AND (OBSTACLE)

DEPARTURE PROCEDURES

AMDT 2A 15344 (FAA)

TAKEOFF MINIMUMS: **Rwys 5, 13, 23, 31**, NA-Environmental. **Rwy 18**, 500-2/4 or std. with a min. climb of 420' per NM to 1700. **Rwy 36**, 300-2 or std. w/ min climb of 234' per NM to 1500.

DEPARTURE PROCEDURE: **Rwy 18**, climb heading 189° to 2200 before turning right. **Rwy 36**, climb heading 009° to 2000 before proceeding on course.

TAKEOFF OBSTACLE NOTES: **Rwy 18**, numerous towers and poles beginning 909' from DER, 389' left of centerline, up to 135' AGL/1432' MSL. Tank 1.1 NM from DER, 1895' left of centerline, 148' AGL/1410' MSL. Antenna 1.9 NM from DER, 478' left of centerline, 75' AGL/1426' MSL. Numerous towers and trees beginning 28' from DER, 437' right of centerline, up to 320' AGL/1540' MSL. **Rwy 36**, tree 540' from DER, 6' left of centerline, 100' AGL/1164' MSL. Trees beginning 2531' from DER, 397' right of centerline, up to 100' AGL/1164' MSL. Building 54' from DER, 435' left of centerline, 30' AGL/1165' MSL.

KEARNY, NE

KEARNEY RGNL (EAR)

TAKEOFF MINIMUMS AND (OBSTACLE)

DEPARTURE PROCEDURES

AMDT 1 12124 (FAA)

DEPARTURE PROCEDURE: **Rwy 13**, climb heading 132° to 3600 before turning left.

TAKEOFF OBSTACLE NOTES: **Rwy 13**, trees 1631' from DER, 745' right of centerline, 82' AGL/2189' MSL. Trees 2769' from DER, 879' left of centerline, 109' AGL/2199' MSL.

KIMBALL, NE

KIMBALL MUNI/ROBERT E ARRAJ FIELD

(IBM)

TAKEOFF MINIMUMS AND (OBSTACLE)

DEPARTURE PROCEDURES

ORIG 07018 (FAA)

TAKEOFF OBSTACLE NOTES: **Rwy 10**, fence 218' from DER, 273' right of centerline, 4' AGL/4905' MSL. Wind cone 256' from DER, 222' left of centerline, 14' AGL/4914' MSL. Multiple stop signs beginning 830' from DER, 555' left of centerline, up to 17' AGL/4926' MSL. **Rwy 28**, terrain beginning 75' from DER, 262' right of centerline, up to 4939' MSL. Terrain beginning 141' from DER, 435' left of centerline, up to 4932' MSL.

14 SEP 2017 to 12 OCT 2017

14 SEP 2017 to 12 OCT 2017

**TAKEOFF MINIMUMS, (OBSTACLE) DEPARTURE PROCEDURES, AND
DIVERSE VECTOR AREA (RADAR VECTORS)**

17229

KINGMAN, KS

KINGMAN AIRPORT-CLYDE CESSNA
FIELD (9K8)

TAKEOFF MINIMUMS AND (OBSTACLE)
DEPARTURE PROCEDURES
ORIG 11125 (FAA)

TAKEOFF OBSTACLE NOTES: **Rwy 11**, trees beginning 139' from DER, 522' right of centerline, up to 100' AGL/1689' MSL. Trees beginning 1525' from DER, 819' left of centerline, up to 100' AGL/1709' MSL. **Rwy 18**, poles beginning 125' from DER, 418' left of centerline, up to 102' AGL/1621' MSL. Trees beginning 36' from DER, left and right of centerline, up to 132' AGL/1661' MSL. **Rwy 29**, vehicles on road 1054' from DER, 615' left of centerline, up to 15' AGL/1634' MSL. Trees beginning 3430' from DER, 257' left of centerline, up to 100' AGL/1729' MSL. **Rwy 36**, tree 119' from DER, 315' left of centerline, 50' AGL/1604' MSL. Trees beginning 580' from DER, left and right of centerline, up to 100' AGL/1704' MSL.

LARNED, KS

LARNED-PAWNEE COUNTY (LQR)

TAKEOFF MINIMUMS AND (OBSTACLE)
DEPARTURE PROCEDURES
AMDT 3 11013 (FAA)

TAKEOFF MINIMUMS: **Rwys 4, 12, 22, 30**, NA-
Environmental.

TAKEOFF OBSTACLE NOTES: **Rwy 17**, runway light 9' from DER, 50' left of centerline, 1' AGL/2009' MSL. Light 100' from DER, 486' right of centerline, 37' AGL/2047' MSL. Tank 117' from DER, 313' right of centerline, 17' AGL/2027' MSL. Vehicles on road 493' from DER, crossing right to left, 15' AGL/2029' MSL. Trees 536' from DER, 54' AGL/2068' MSL. **Rwy 35**, runway light 10' from DER, 13' right of centerline, 2' AGL/2008' MSL. Vehicles on road 548' from DER, crossing right to left, 15' AGL/2021' MSL. Power poles 573' from DER, 614' left of centerline, 38' AGL/2031' MSL. Power poles beginning 577' from DER, 364' right of centerline, up to 38' AGL/2039' MSL. Trees beginning 597' from DER, 204' right of centerline. Up to 54' AGL/2050' MSL.

LAWRENCE, KS

LAWRENCE MUNI (LWC)
TAKEOFF MINIMUMS AND (OBSTACLE)
DEPARTURE PROCEDURES

AMDT 4 03247 (FAA)

TAKEOFF MINIMUMS: **Rwy 1**, 400-1½ or std. with a min. climb of 387' per NM to 1300. **Rwy 33**, 300-1 or std. with a min. climb of 327' per NM to 1100.

DEPARTURE PROCEDURE: **Rwy 15**, south and west departures (140° CW 360°), climb via heading 130° to 2400 before turning right on course. **Rwy 19**, climb via heading 180° to 2400 before turning on course.

TAKEOFF OBSTACLE NOTES: **Rwy 1**, bush 297' from DER, 192' right of centerline, 9' AGL/842' MSL, tree 2864' from DER, 759' right of centerline, 90' AGL/969' MSL, tree 4151' from DER, 1466' left of centerline, 79' AGL/958' MSL, tree 7024' from DER, 2180' right of centerline, 45' AGL/1104' MSL, tree 7285' from DER, 1781' right of centerline, 100' AGL/1179' MSL, tree 7406' from DER, 349' right of centerline, 49' AGL/1088' MSL, tree 7980' from DER, 2613' right of centerline, 46' AGL/1105' MSL, tree 10,211' from DER, 2539' left of centerline, 49' AGL/1108' MSL, tree 11,544' from DER, 1866' left of centerline, 70' AGL/1129' MSL. **Rwy 15**, tree 543' from DER, 561' left of centerline, 28' AGL/857' MSL, tree 1361' from DER, 714' right of centerline, 50' AGL/879' MSL. **Rwy 19**, tree 1797' from DER, 558' right of centerline, 79' AGL/918' MSL, tree 1896' from DER, 317' right of centerline, 71' AGL/910' MSL. **Rwy 33**, tree 1323' from DER, 623' right of centerline, 59' AGL/898' MSL, tree 1622' from DER, 353' right of centerline, 48' AGL/887' MSL, tree 1768' from DER, 201' right of centerline, 49' AGL/888' MSL, tree 1945' from DER, 17' left of centerline, 66' AGL/905' MSL, tree 4357' from DER, 1563' right of centerline, 100' AGL/1009' MSL.

LEXINGTON, NE

JIM KELLY FIELD (LXN)
TAKEOFF MINIMUMS AND (OBSTACLE)
DEPARTURE PROCEDURES

AMDT 2 07130 (FAA)

TAKEOFF MINIMUMS: **Rwy 19**, std. w/ min. climb of 291' per NM to 4000 or 1200-3 for climb in visual conditions. DEPARTURE PROCEDURE: **Rwy 14**, climb heading 136° to 3500' before turning right. **Rwy 19**, for climb in visual conditions: cross Jim Kelly Field Airport at or above 3500 MSL before proceeding on course.

TAKEOFF OBSTACLE NOTES: **Rwy 1**, terrain 56' from DER, 470' left of centerline, 2409' MSL. **Rwy 14**, multiple trees beginning 865' from DER, 242' left of centerline, up to 59' AGL/2459' MSL. Multiple trees and railroad signals beginning 896' from DER, 406' right of centerline, up to 55' AGL/2457' MSL. **Rwy 32**, fence 97' from DER, 497' right of centerline, 3' AGL/2418' MSL. Fence 72' from DER, 498' left of centerline, 10' AGL/2415' MSL.

14 SEP 2017 to 12 OCT 2017

14 SEP 2017 to 12 OCT 2017

17229

**TAKEOFF MINIMUMS, (OBSTACLE) DEPARTURE PROCEDURES, AND
DIVERSE VECTOR AREA (RADAR VECTORS)**

TAKEOFF MINIMUMS, (OBSTACLE) DEPARTURE PROCEDURES, AND DIVERSE VECTOR AREA (RADAR VECTORS)

17229

LIBERAL, KS

LIBERAL MID-AMERICA RGNL (LBL)

TAKEOFF MINIMUMS AND (OBSTACLE)

DEPARTURE PROCEDURES

AMDT 6 15008 (FAA)

TAKEOFF OBSTACLE NOTES: **Rwy 4**, trees beginning 1021' from DER, 619' right of centerline, up to 67' AGL/2937' MSL. Wind sock 345' from DER, 380' left of centerline, 22' AGL/2896' MSL. Pole 390' from DER, 350' left of centerline, 22' AGL/2896' MSL. **Rwy 17**, REILs 10' from DER, 29 to 30' left and right of centerline, 2' AGL/2877' MSL. **Rwy 22**, REILs 39 to 40' from DER, 113 to 117' right and left of centerline, 2' AGL/up to 2887' MSL. **Rwy 35**, trees beginning 1324' from DER, 554' right of centerline, up to 49' AGL/2925' MSL. Lights 10' from DER, 30' left and 31' right of centerline, 2' AGL/2881' MSL.

LINCOLN, NE

LINCOLN (LNK)

TAKEOFF MINIMUMS AND (OBSTACLE)

DEPARTURE PROCEDURES

ORIG-A 10182 (FAA)

TAKEOFF OBSTACLE NOTES: **Rwy 14**, windsock 262' from DER, 369' left of centerline, 7' AGL/1187' MSL. **Rwy 17**, light poles beginning 520' from DER, 505' right of centerline, up to 36' AGL/1198' MSL. **Rwy 18**, rod on obstruction light tower 3858' from DER, 687' right of centerline, 80' AGL/1280' MSL. **Rwy 35**, warehouse 4463' from DER, 1350' left of centerline, 50' AGL/1369' MSL.

LOUP CITY, NE

LOUP CITY MUNI (0F4)

TAKEOFF MINIMUMS AND (OBSTACLE)

DEPARTURE PROCEDURES

ORIG 15288 (FAA)

TAKEOFF MINIMUMS: **Rwys 4, 22**, NA-Environmental. TAKEOFF OBSTACLE NOTES: **Rwy 16**, vehicles on road beginning 18' from DER, 357' left of centerline, up to 15' AGL/2084' MSL. Vehicle on road, transmission tower, and pole beginning 555' from DER, 440' right of centerline, up to 37' AGL/2102' MSL. Trees, transmission tower, and pole beginning 634' from DER, 397' left of centerline, up to 57' AGL/2128' MSL. Trees beginning 1394' from DER, 173' left of centerline, up to 66' AGL/2137' MSL. Trees beginning 1803' from DER, 787' right of centerline, up to 79' AGL/2150' MSL. **Rwy 34**, trees beginning 34' from DER, 377' left of centerline, up to 17' AGL/2088' MSL. Trees beginning 440' from DER, 276' right of centerline, up to 22' AGL/2093' MSL. Trees beginning 759' from DER, 450' left of centerline, up to 75' AGL/2144' MSL. Tree 1821' from DER, 708' left of centerline, 53' AGL/2123' MSL.

LYONS, KS

LYONS-RICE COUNTY MUNI (LYO)

TAKEOFF MINIMUMS AND (OBSTACLE)

DEPARTURE PROCEDURES

ORIG 16259 (FAA)

TAKEOFF MINIMUMS: **Rwy 14, 17L, 32, 35R**, NA-Environmental.

TAKEOFF OBSTACLE NOTES: **Rwy 17R**, trees beginning 262' from DER, 261' left of centerline, up to 1718' MSL. Tree 1115' from DER, 493' right of centerline, 1712' MSL. Trees beginning 1293' from DER, 366' right of centerline, up to 1726' MSL. Trees beginning 1518' from DER, 683' right of centerline, up to 1727' MSL. **Rwy 35L**, bldg 82' from DER, 469' right of centerline, 28' AGL/1722' MSL. Tree 87' from DER, 398' left of centerline, 1717' MSL. Pole 475' from DER, 499' right of centerline, 40' AGL/1732' MSL. Pole 623' from DER, 219' left of centerline, 47' AGL/1740' MSL. Poles beginning 623' from DER, 235' left of centerline, up to 50' AGL/1744' MSL. Pole 1896' from DER, 204' right of centerline, 44' AGL/1741' MSL. Poles, tree beginning 1897' from DER, 14' left of centerline, up to 49' AGL/1746' MSL.

MANHATTAN, KS

MANHATTAN RGNL (MHK)

TAKEOFF MINIMUMS AND (OBSTACLE)

DEPARTURE PROCEDURES

AMDT 7A 12152 (FAA)

TAKEOFF MINIMUMS: **Rwy 3**, 400-2½ or std. w/ min. climb of 360' per NM to 1600. **Rwy 13**, 300-1½ or std. w/ min. climb of 219' per NM to 1300. **Rwy 31**, 400-2¼ or std. w/ min. climb of 277' per NM to 1500.

DEPARTURE PROCEDURE: **All runways**,

westbound departures heading 210° through 360° NA.

Rwy 3, climb heading 036° to 1700 before turning rightNOTE: **R-3602B** restricted area immediately west of airport.

TAKEOFF OBSTACLE NOTES: **Rwy 3**, numerous trees beginning 20' from DER, right and left of centerline, up to 100' AGL/1395' MSL. **Rwy 13**, numerous trees beginning 1304' from DER, right and left of centerline, up to 100' AGL/1229' MSL. Light pole, flood light, building, and elevator beginning 33' from DER, 439' left of centerline, up to 50' AGL/1086' MSL. Railroad 905' from DER, 614' right of centerline, 23' AGL/1068' MSL. **Rwy 21**, numerous trees beginning 2350' from DER, right and left of centerline, up to 100' AGL/1169' MSL. Pole 4928' from DER, 1006' right of centerline, 41' AGL/1189' MSL. Pole 3593' from DER, 462' right of centerline, 41' AGL/1189' MSL. Pole 3993' from DER, 461' right of centerline, 41' AGL/1158' MSL. **Rwy 31**, numerous trees beginning 164' from DER, right and left of centerline, up to 100' AGL/1358' MSL. Utility pole 1290' from DER, 435' right of centerline, 25' AGL/1124' MSL.

14 SEP 2017 to 12 OCT 2017

14 SEP 2017 to 12 OCT 2017

17229

TAKEOFF MINIMUMS, (OBSTACLE) DEPARTURE PROCEDURES, AND DIVERSE VECTOR AREA (RADAR VECTORS)

TAKEOFF MINIMUMS, (OBSTACLE) DEPARTURE PROCEDURES, AND DIVERSE VECTOR AREA (RADAR VECTORS)

17229

MARSHALL AAF (KFRI)

FORT RILEY, KS

TAKEOFF MINIMUMS AND (OBSTACLE)
DEPARTURE PROCEDURES
07186

Rwy 22, 400-234*

* Or standard with minimum climb of 273/NM to 1500.

DEPARTURE PROCEDURE: **Rwy 22:** Climb on heading 224° to 2200 before proceeding on course.TAKEOFF OBSTACLE NOTES: **Rwy 4:** Ridgeline 1212' MSL, 2721' from DER, 1104' right of centerline.Ridgeline 1198' MSL, 4791' from DER, 151' right of centerline. **Rwy 22:** Antenna 1371' MSL, 8919' from DER, 1292' left of centerline. Antenna 1432' MSL, 14,495' from DER, 2287' left of centerline.

MARYSVILLE, KS

MARYSVILLE MUNI (MYZ)

TAKEOFF MINIMUMS AND (OBSTACLE)
DEPARTURE PROCEDURES
AMDT 1 11125 (FAA)

TAKEOFF MINIMUMS: **Rwy 34**, 500-1.TAKEOFF OBSTACLE NOTES: **Rwy 16**, trees beginning 68' from DER, 480' left of centerline, up to 28' AGL/1287' MSL. Pole 200' from DER, 501' left of centerline, 30' AGL/1285' MSL. Trees beginning 506' from DER, 540' left of centerline, up to 88' AGL/1327' MSL. Trees beginning 1306' from DER, 761' right of centerline, up to 100' AGL/1359' MSL. Trees beginning 4610' from DER, 1170' left of centerline, up to 100' AGL/1409' MSL. **Rwy 34**, trees 1539' from DER, 902' left of centerline. 69' AGL/1327' MSL. Tower 4940' from DER, 1289' right of centerline, 499' AGL/1759' MSL.

MC CONNELL AFB (KIAB)

WICHITA, KS

TAKEOFF MINIMUMS AND (OBSTACLE)
DEPARTURE PROCEDURES
17229

TAKEOFF OBSTACLE NOTES: **Rwy 1L**, acft tail, 53' AGL/1421' MSL, 56' from DER, 485' left of cntrln. Acft tail, 53' AGL/1420' MSL, 641' from DER, 471' left of cntrln. Rwy 1R, acft tail, 53' AGL/1419' MSL, 705' from DER, 702' right of cntrln. Acft tail, 53' AGL/1421' MSL, 885' from DER, 702' right of cntrln. Acft tail, 53' AGL/1422' MSL, 1066' from DER, 702' right of cntrln. **Rwy 19L**, pylon 89' AGL/1439' MSL, 5201' from DER, 1739' left of cntrln. Pylon, 89' AGL/1444' MSL, 5286' from DER, 1437' left of cntrln. Pylon, 89' AGL/1442' MSL, 5356' from DER, 1120' left of cntrln. Rwy 19R, pylon, 89' AGL/1405' MSL, 3451' from DER, 1224' right of cntrln. Pylon, 89' AGL/1404' MSL, 3788' from DER, 1147' right of cntrln. Pylon, 89' AGL/1442' MSL, 5358' from DER, 1947' left of cntrln.

MC COOK, NE

MC COOK BEN NELSON RGNL (MCK)

TAKEOFF MINIMUMS AND (OBSTACLE)
DEPARTURE PROCEDURES
ORIG 09351 (FAA)

TAKEOFF MINIMUMS: **Rwys 17, 35**, NA-Environmental. TAKEOFF OBSTACLE NOTES: **Rwy 4**, tree 275' from DER, 233' left of centerline, 27' AGL/2566' MSL. **Rwy 12**, multiple trees beginning 71' from DER, 147' right of centerline, up to 40' AGL/2559' MSL. Tree 240' from DER, 142' left of centerline, 40' AGL/2549' MSL. **Rwy 22**, pole 843' from DER, 95' right of centerline, 28' AGL/2587' MSL.

MC PHERSON, KS

MC PHERSON (MPR)

TAKEOFF MINIMUMS AND (OBSTACLE)
DEPARTURE PROCEDURES
AMDT 2 07298 (FAA)

TAKEOFF MINIMUMS: **Rwy 8, 26**, NA-Environmental. TAKEOFF OBSTACLE NOTES: **Rwy 18**, trees beginning 2646' from DER, 1047' left to 1047' right of centerline, up to 100' AGL/1594' MSL. **Rwy 36**, bush 32' from DER, 262' right of centerline, 8' AGL/1495' MSL. Trees beginning 2646' from DER, 1047' left to 1047' right of centerline, up to 100' AGL/1594' MSL.

MEADE, KS

MEADE MUNI (MEJ)

TAKEOFF MINIMUMS AND (OBSTACLE)
DEPARTURE PROCEDURES
ORIG 11013 (FAA)

TAKEOFF MINIMUMS: **Rwys 8, 26**, NA-Environmental. TAKEOFF OBSTACLE NOTES: **Rwy 17**, vehicles on roadway at DER, 290' right of centerline, up to 15' AGL/2524' MSL. Trees beginning 768' from DER, left and right of centerline, up to 45' AGL/2554' MSL. **Rwy 35**, hanger 446' from DER, 612' left of centerline, up to 20' AGL/2549' MSL. Vehicles on roadway 641' from DER, left and right of centerline, up to 17' AGL/2546' MSL. Trees beginning 2129' from DER, 530' right of centerline, up to 45' AGL/2574' MSL.

MINDEN, NE

PIONEER VILLAGE FIELD (0V3)

TAKEOFF MINIMUMS AND (OBSTACLE)
DEPARTURE PROCEDURES
AMDT 2 10266 (FAA)

TAKEOFF MINIMUMS: **Rwys 5, 23**, NA-Turf. DEPARTURE PROCEDURE: **Rwy 34**, climb heading 339° to 3000 before turning right. TAKEOFF OBSTACLE NOTES: **Rwy 16**, trees, guard posts, and street lights beginning 32' from DER, 156' right of centerline, up to 75' AGL/2223' MSL. Trees beginning 193' from DER, 167' left of centerline, up to 67' AGL/2204' MSL. Buildings beginning 1656' from DER, 156' right of centerline, up to 70' AGL/2225' MSL. Power poles beginning 528' from DER, 393' right of centerline, up to 37' AGL/2191' MSL. **Rwy 34**, trees beginning 192' from DER, 156' left of centerline, up to 100' AGL/2269' MSL.

17229

TAKEOFF MINIMUMS, (OBSTACLE) DEPARTURE PROCEDURES, AND DIVERSE VECTOR AREA (RADAR VECTORS)

TAKEOFF MINIMUMS, (OBSTACLE) DEPARTURE PROCEDURES, AND DIVERSE VECTOR AREA (RADAR VECTORS)

17229

MOUNDRIDGE, KS

MOUNDRIDGE MUNI (47K)

TAKEOFF MINIMUMS AND (OBSTACLE)

DEPARTURE PROCEDURES

ORIG 11349 (FAA)

TAKEOFF OBSTACLE NOTES: **Rwy 17**, buildings 224' from DER, 125' right and 280' left of centerline, up to 25' AGL/1519' MSL. Vehicles on roadway across centerline 508' from DER, up to 15' AGL/1504' MSL. Power poles beginning 744' from DER, 638' left of centerline, up to 35' AGL/1524' MSL. Trees beginning 1123' from DER, 693' right of centerline, up to 100' AGL/1589' MSL. **Rwy 35**, trees beginning 4035' from DER, 401' right of centerline, up to 100' AGL/1599' MSL.

NEBRASKA CITY, NE

NEBRASKA CITY MUNI (AFK)

TAKEOFF MINIMUMS AND (OBSTACLE)

DEPARTURE PROCEDURES

ORIG 08157 (FAA)

TAKEOFF MINIMUMS: **Rwys 5, 23**, NA-Environmental.

NELIGH, NE

ANTELOPE COUNTY (4V9)

TAKEOFF MINIMUMS AND (OBSTACLE)

DEPARTURE PROCEDURES

ORIG 09351 (FAA)

TAKEOFF MINIMUMS: **Rwy 1**, 400-1 $\frac{3}{4}$ or std. w/ min. climb of 315' per NM to 2200.

DEPARTURE PROCEDURE: **Rwy 19**, climb heading 188° to 2500 before proceeding on course.

TAKEOFF OBSTACLE NOTES: **Rwy 1**, multiple trees beginning 283' from DER, 7' right of centerline, up to 89' AGL/1810' MSL. Multiple towers beginning 1.2 NM from DER, 194' left of centerline, up to 135' AGL/2071' MSL. Multiple antennas beginning 1.4 NM from DER, 434' left of centerline, up to 71' AGL/2022' MSL.

Multiple structures beginning 1720' from DER, 2' left of centerline, up to 59' AGL/1780' MSL. Building 1.4 NM from DER, 477' left of centerline, 42' AGL/1991' MSL. **Rwy 13**, tree 30' from DER, 468' left of centerline, 60' AGL/1756' MSL. **Rwy 19**, fence beginning 80' from DER, 450' right of centerline, up to 4' AGL/1785' MSL. Ground 76' from DER, 334' right of centerline, 1783' MSL. Ground 180' from DER, 342' right of centerline, 1783' MSL. **Rwy 31**, multiple trees beginning 586' from DER, 603' left of centerline, up to 60' AGL/1819' MSL. Vehicles on road beginning 168' from DER, 523' left of centerline, up to 17' AGL/1766' MSL.

NEWTON, KS

NEWTON-CITY-COUNTY (EWK)

TAKEOFF MINIMUMS AND (OBSTACLE)

DEPARTURE PROCEDURES

ORIG 11321 (FAA)

TAKEOFF OBSTACLE NOTES: **Rwy 8**, silo 503' from DER, 552' right of centerline, 61' AGL/1591' MSL. Elevator 535' from DER, 523' right of centerline, 61' AGL/1591' MSL. Pole 837' from DER, 364' left of centerline, 42' AGL/1568' MSL. Pole 844' from DER, 209' right of centerline, 42' AGL/1568' MSL. **Rwy 26**, pole 737' from DER, 229' right of centerline, 37' AGL/1560' MSL. Pole 723' from DER, 407' left of centerline, 27' AGL/1553' MSL. **Rwy 35**, tree 586' from DER, 577' left of centerline, 22' AGL/1545' MSL. Sign at DER, 410' right of centerline, 5' AGL/1533' MSL. Rising terrain, 40' from DER, 399' right of centerline, up to 1532' MSL.

NORFOLK, NE

NORFOLK RGNL/KARL STEFAN

MEMORIAL FLD (OFK)

TAKEOFF MINIMUMS AND (OBSTACLE)

DEPARTURE PROCEDURES

ORIG 09351 (FAA)

TAKEOFF OBSTACLE NOTES: **Rwy 1**, terrain with trees beginning 50' from DER, left and right of centerline, up to 100' AGL/1615' MSL. **Rwy 14**, terrain with trees beginning 55' from DER, left and right of centerline, up to 75' AGL/1640' MSL. Vehicle on road 555' from DER, 619' left of centerline, 15' AGL/1586' MSL. Satellite dish 825' from DER, 359' left of centerline, 37' AGL/1599' MSL. Electrical equipment 22' from DER, 499' left of centerline, 5' AGL/1565' MSL. **Rwy 19**, terrain beginning 116' from DER, 486' left of centerline, up to 1576' MSL. Fence 905' from DER, 666' left of centerline, 6' AGL/1596' MSL. Trees beginning 3024' from DER, 486' left and right of centerline, up to 100' AGL/1698' MSL. **Rwy 32**, terrain 180' from DER, 162' left of centerline, 1549' MSL. Tree 778' from DER, 672' left of centerline, 100' AGL/1649' MSL. Railroad tracks 959' from DER, 363' left of centerline, 23' AGL/1568' MSL. Tree 2475' from DER, 60' left of centerline, 81' AGL/1611' MSL.

NORTH PLATTE, NE

NORTH PLATTE RGNL AIRPORT LEE BIRD
FIELD (LBF)

TAKEOFF MINIMUMS AND (OBSTACLE)

DEPARTURE PROCEDURES

AMDT 5 13262 (FAA)

DEPARTURE PROCEDURE: **Rwy 30**, climb heading 301° to 4000 before turning right. **Rwy 35**, climb heading 355° to 4000 before turning left.

TAKEOFF OBSTACLE NOTES: **Rwy 12**, road 23' from DER, 14' left of centerline, 20' AGL/2784' MSL. Road and tree beginning 62' from DER, 18' right of centerline, up to 84' AGL/2844' MSL. **Rwy 17**, obstruction light on fence, bush, road, and numerous trees beginning 88' from DER, 1' left of centerline, up to 96' AGL/2866' MSL. Terrain, road, and numerous trees beginning 26' from DER, 2' right of centerline, up to 102' AGL/2872' MSL. **Rwy 30**, terrain, pole, and road beginning 74' from DER, 111' left of centerline, up to 48' AGL/2818' MSL. Trees beginning 1128' from DER, 767' right of centerline, up to 73' AGL/2843' MSL. **Rwy 35**, terrain, antenna, and trees beginning 100' from DER, 6' left of centerline, up to 73' AGL/2843' MSL. Road and trees beginning 25' from DER, 8' right of centerline, up to 118' AGL/2818' MSL.

17229

TAKEOFF MINIMUMS, (OBSTACLE) DEPARTURE PROCEDURES, AND DIVERSE VECTOR AREA (RADAR VECTORS)

**TAKEOFF MINIMUMS, (OBSTACLE) DEPARTURE PROCEDURES, AND
DIVERSE VECTOR AREA (RADAR VECTORS)**

17229

NORTON, KS

NORTON MUNI (NRN)
TAKEOFF MINIMUMS AND (OBSTACLE)
DEPARTURE PROCEDURES
AMDT 1 08045 (FAA)
TAKEOFF MINIMUMS: **Rwys 8, 26**, NA-Environmental.
Rwy 16, 400-3.
TAKEOFF OBSTACLE NOTES: **Rwy 16**, Tower 2241'
from DER, 642' left of centerline, 198' AGL/2528' MSL.
Tower 2.42 NM from DER, 3467' right of centerline,
358' AGL/2758' MSL. **Rwy 34**, Tree 630' from DER,
203 left of centerline, 100' AGL/2489' MSL.

O'NEILL, NE

**THE O'NEILL MUNI-JOHN L BAKER FIELD
(ONL)**
TAKEOFF MINIMUMS AND (OBSTACLE)
DEPARTURE PROCEDURES
ORIG 88266 (FAA)
DEPARTURE PROCEDURE: **Rwys 4, 13, 22**, climb
runway heading to 2600 before turning.

OAKLEY, KS

OAKLEY MUNI (OEL)
TAKEOFF MINIMUMS AND (OBSTACLE)
DEPARTURE PROCEDURES
ORIG 06215 (FAA)
TAKEOFF OBSTACLE NOTES: **Rwy 16**, bush 145'
from DER, 496' left of centerline, 14' AGL/3034' MSL.
Road 208' from DER, 368' right of centerline, 15'
AGL/3031' MSL. **Rwy 34**, tree 855' from DER, 416'
right of centerline, 50' AGL/3099' MSL.

OBERLIN, KS

OBERLIN MUNI (OIN)
TAKEOFF MINIMUMS AND (OBSTACLE)
DEPARTURE PROCEDURES
AMDT 1 11013 (FAA)
TAKEOFF MINIMUMS: **Rwys 3, 12, 21, 30**, NA-
Environmental.
DEPARTURE PROCEDURE: **Rwy17**, climb heading
171° to 3100' before turning East.

OFFUTT AFB (KOFF),

OMAHA, NE
TAKEOFF MINIMUMS AND (OBSTACLE)
DEPARTURE PROCEDURES
AMDT 2 16147
TAKEOFF OBSTACLE NOTES: **Rwy 12**, antenna, 7'
AGL/968' MSL, 275' from DER, on centerline. Possible
vehicle, 15' AGL/983' MSL, 170' from DER, 159' left of
centerline and 190' from DER, 165' right of centerline.
Possible railroad, up to 23' AGL/995' MSL, 385' from
DER, 355' left of centerline and 420' from DER, 400'
right of centerline. Multiple trees, up to 110' AGL/1076'
MSL, beginning 3185' from DER, 69' left of centerline.
Terrain, 972' MSL, 0' from DER, 156' right of
centerline. Multiple trees, up to 110' AGL/1074' MSL,
beginning 1150' from DER, 4' right of centerline.
Irrigation equipment, 20' AGL/985' MSL, 545' from
DER, 186' right of centerline. **Rwy 30**, antenna, 7'
AGL/1053' MSL, 201' from DER, on centerline. Multiple
trees, up to 110' AGL/1090' MSL, beginning 296' from
DER, 535' left of centerline. Multiple trees, up to 110'
AGL/1098' MSL, beginning 1267' from DER, 552' right
of centerline.

OGALLALA, NE

SEARLE FIELD (OGA)
TAKEOFF MINIMUMS AND (OBSTACLE)
DEPARTURE PROCEDURES
AMDT 5 13010 (FAA)
TAKEOFF MINIMUMS: **Rwy 26**, std w/min. climb of 215' per
NM to 4000'. **Rwy 31**, std w/min. climb of 320' per NM to
4400 or 1200-3 for climb in visual conditions. When
executing VCOA, notify ATC prior to departure.
DEPARTURE PROCEDURE: **Rwy 8**, climb heading 083° to
3900 before turning left. **Rwy 26**, climb heading 263° to
4000 before turning right. **Rwy 31**, for climb in visual
conditions: cross Searle Field at or above 4400' MSL
before proceeding on course.
TAKEOFF OBSTACLE NOTES: **Rwy 8**, rising terrain 224'
from DER, left and right of centerline, up to 3261' MSL.
Light on windsock 235' from DER, 417' left of centerline,
16' AGL/3265' MSL. Vehicles on road beginning 294' from
DER, 555' right of centerline, up to 15' AGL/3257' MSL.
Train on tracks beginning 469' from DER, 615' right of
centerline, up to 23' AGL/3264' MSL. Wood poles
beginning 566' from DER, 461' right of centerline, up to 24'
AGL/3263' MSL. **Rwy 13**, trees beginning 504' from DER,
247' right of centerline, up to 30' AGL/3269' MSL. Trees
and poles beginning 627' from DER, 168' right of
centerline, up to 51' AGL/3290' MSL. **Rwy 26**, fence 76'
from DER, 252' right of centerline, 4' AGL/3265' MSL.
Terrain 143' from DER, 499' right of centerline, up to 3269'
MSL. Trees 2581' from DER, 964' left of centerline, up to
70' AGL/3339' MSL. **Rwy 31**, tree 383' from DER, 290' left
of centerline, up to 100' AGL/3379' MSL. Trees beginning
877' from DER, 314' left of centerline, up to 100' AGL/3399'
MSL. Rising terrain beginning 379' from DER, left and right
of centerline, up to 3586' MSL.

OLATHE, KS

JOHNSON COUNTY EXECUTIVE (OJC)
TAKEOFF MINIMUMS AND (OBSTACLE)
DEPARTURE PROCEDURES
ORIG 05300 (FAA)
TAKEOFF OBSTACLE NOTES: **Rwy 18**, multiple trees 622'
from DER, 192' right of centerline, up to 73' AGL/1084'
MSL. **Rwy 36**, antenna 335' from DER, 263' left of
centerline, 20' AGL/1110' MSL, tree 1008' from DER, 612'
right of centerline, 57' AGL/1130' MSL, tree 1544' from
DER, 810' left of centerline, 71' AGL/1144' MSL.

NEW CENTURY AIRCENTER (IXD)

TAKEOFF MINIMUMS AND (OBSTACLE)
DEPARTURE PROCEDURES
AMDT 1 12320 (FAA)
TAKEOFF OBSTACLE NOTES: **Rwy 4**, fence 204' from
DER, 256' right of centerline, 11' AGL/1096' MSL.
Obstruction light on fence, 295' from DER, 163' right
of centerline, 13' AGL/1098' MSL. Trees beginning 1554' from
DER, left and right of centerline, up to 100' AGL/1179'
MSL. **Rwy 18**, tree 1845' from DER, 133' left of centerline,
100' AGL/1159' MSL. **Rwy 22**, trees beginning 260' from
DER, left and right of centerline, up to 100' AGL/1159'
MSL. **Rwy 36**, ground beginning 17' from DER, 407' right
of centerline, 1091' MSL. Vehicle on roadway beginning 24'
from DER, left and right of centerline, up to 15' AGL/1101'
MSL.

17229

**TAKEOFF MINIMUMS, (OBSTACLE) DEPARTURE PROCEDURES, AND
DIVERSE VECTOR AREA (RADAR VECTORS)**

14 SEP 2017 to 12 OCT 2017

14 SEP 2017 to 12 OCT 2017

TAKEOFF MINIMUMS, (OBSTACLE) DEPARTURE PROCEDURES, AND DIVERSE VECTOR AREA (RADAR VECTORS)

17229

OMAHA, NE

EPPLEY AIRFIELD (OMA)

TAKEOFF MINIMUMS AND (OBSTACLE)

DEPARTURE PROCEDURES

AMDT 6 17061 (FAA)

TAKEOFF MINIMUMS: **Rwy 14L**, 300-2½ or std. w/min.

climb of 270' per NM to 1400.

DEPARTURE PROCEDURE: **Rwy 14L, 14R**, Climb heading 139° to 1700 before proceeding on course. **Rwy 18**, Climb heading 175° to 1900 before turning right. **Rwy 32L, 32R**, Climb heading 319° to 2300 before turning left. **Rwy 36**, Climb heading 355° to 1900 before turning left.

TAKEOFF OBSTACLE NOTES: **Rwy 14L**, utility point 22' from DER, 481' right of centerline, 8' AGL/986' MSL. Trees beginning 3578' from DER, 115' left of centerline, up to 107' AGL/1096' MSL. Trees 1.4 NM from DER, 2732' left of centerline, up to 47' AGL/1268' MSL. Trees 1.9 NM from DER, 2519' left of centerline, up to 105' AGL/1284' MSL.

Rwy 14R, trees 3972' from DER, 1315' left of centerline, up to 99' AGL/1088' MSL. **Rwy 18**, sign 38' from DER, 270' right of centerline, 4' AGL/980' MSL. Pole 887' from DER, 702' right of centerline, 23' AGL/1002' MSL. Trees beginning 3953' from DER, 120' left of centerline, up to 102' AGL/1087' MSL. Trees beginning 4286' from DER, 140' right of centerline, up to 108' AGL/1090' MSL. Bridge and poles on bridge beginning 4549' from DER, 852' left of centerline, up to 149' AGL/1114' MSL. **Rwy 32L**, light pole and vehicles on road beginning 969' from DER, 659' right of centerline, up to 38' AGL/1018' MSL. Trees beginning 2414' from DER, 1087' left of centerline, up to 83' AGL/1064' MSL. Trees 2706' from DER, 1098' right of centerline, up to 75' AGL/1054' MSL. **Rwy 32R**, approach light 1' from DER, on centerline, 1' AGL/984' MSL. Approach light 10' from DER, 55' right of centerline, 5' AGL/985' MSL. Approach light 10' from DER, 55' left of centerline, 5' AGL/985' MSL. Utility 169' from DER, 456' left of centerline, 10' AGL/990' MSL. Pole 1145' from DER, 790' right of centerline, 28' AGL/1017' MSL. Trees beginning 2216' from DER, 767' right of centerline, up to 76' AGL/1065' MSL. Trees beginning 3022' from DER, 955' right of centerline, up to 109' AGL/1091' MSL. **Rwy 36**, approach light 456' from DER, 1' left of centerline, 11' AGL/993' MSL. Light pole and vehicles on road beginning 938' from DER, 317' right of centerline, up to 15' AGL/1015' MSL. Light pole 1339' from DER, 760' left of centerline, 38' AGL/1018' MSL. Trees beginning 2730' from DER, 1014' right of centerline, up to 101' AGL/1082' MSL. Trees beginning 3288' from DER, 1197' left of centerline, up to 79' AGL/1068' MSL.

MILLARD (MLE)

TAKEOFF MINIMUMS AND (OBSTACLE)

DEPARTURE PROCEDURES

AMDT 3 07074 (FAA)

TAKEOFF MINIMUMS: **Rwy 30**, 300-1¼ or std. w/ min. climb of 370' per NM to 3000.

DEPARTURE PROCEDURE: **Rwy 12**, climb via heading 123° to 3200 before proceeding on course. **Rwy 30**, climb via heading 303° to 3000 before proceeding on course.

TAKEOFF OBSTACLE NOTES: **Rwy 12**, multiple trees, power poles and highway signs beginning 250' from DER, 152' left of centerline, up to 35' AGL/1101' MSL. Multiple trees and fences beginning 3' from DER, 381' right of centerline, up to 63' AGL/1104' MSL. Multiple street lights beginning 1506' from DER, 678' left of centerline to 568' right of centerline, up to 46' AGL/1115' MSL. **Rwy 30**, multiple towers, trees, power poles, buildings, street lights, fences, and road beginning 13' from DER, 264' left of centerline, up to 100' AGL/1270' MSL. Multiple trees and power poles beginning 516' from DER, 343' right of centerline, up to 88' AGL/1137' MSL.

17229

TAKEOFF MINIMUMS, (OBSTACLE) DEPARTURE PROCEDURES, AND DIVERSE VECTOR AREA (RADAR VECTORS)

ORD, NE

EVELYN SHARP FIELD (ODX)

TAKEOFF MINIMUMS AND (OBSTACLE)

DEPARTURE PROCEDURES

AMDT 3 09127 (FAA)

TAKEOFF MINIMUMS: **Rwys 17,35**, NA-Environmental.

DEPARTURE PROCEDURE: **Rwy 13**, climb heading 131° to 3000 before turning right.

TAKEOFF OBSTACLE NOTES: **Rwy 13**, pole 860' from DER, 498' left of centerline, 39' AGL/2098' MSL. Trees beginning 705' from DER, 505' left of centerline, up to 37' AGL/2096' MSL. Trees beginning 43' from DER, 443' right of centerline, up to 45' AGL/2104' MSL. **Rwy 31**, trees beginning 2590' from DER, 276' left of centerline, up to 84' AGL/2183' MSL. Poles beginning 1234' from DER, 1' left of centerline, up to 60' AGL/2130' MSL. Tank 2615' from DER, 256' left of centerline, 69' AGL/2139' MSL. Fence 199' from DER, 241' left of centerline, 5' AGL/2075' MSL. Tree 55' from DER, 348' right of centerline, 2' AGL/2072' MSL.

OSHKOSH, NE

GARDEN COUNTY (OKS)

TAKEOFF MINIMUMS AND (OBSTACLE)

DEPARTURE PROCEDURES

ORIG 05020 (FAA)

DEPARTURE PROCEDURE: **Rwy 12**, climb via heading 125° to 4000 before turning right.

OTTAWA, KS

OTTAWA MUNI (OWI)

TAKEOFF MINIMUMS AND (OBSTACLE)

DEPARTURE PROCEDURES

AMDT 2 16035 (FAA)

TAKEOFF MINIMUMS: **Rwy 13, 31**, NA - Environmental.

Rwy 35, 400-3 or std. w/min climb of 220' per NM to 1500, or alternatively, with standard takeoff minimums and normal 200' per NM climb gradient, takeoff must occur no later than 1200' prior to DER.

DEPARTURE PROCEDURE: **Rwy 35**, Climb heading 356° to 1600 before turning right.

TAKEOFF OBSTACLE NOTES: **Rwy 17**, signs beginning 12' from DER, 37' left of centerline, up to 2' AGL/966' MSL. **Rwy 35**, tree and poles beginning 1530' from DER, 117' left of centerline, up to 61' AGL/1030' MSL. Trees and poles beginning 1647' from DER, 115' right of centerline, up to 70' AGL/1029' MSL. Tower 2.3 NM from DER, 3810' left of centerline, 402' AGL/1331' MSL.

PAOLA, KS

MIAMI COUNTY (K81)

TAKEOFF MINIMUMS AND (OBSTACLE)

DEPARTURE PROCEDURES

ORIG 11349 (FAA)

TAKEOFF OBSTACLE NOTES: **Rwy 3**, trees beginning 288' from DER, 317' right of centerline, up to 100' AGL/1034' MSL. Trees beginning 1340' from DER, 93' left of centerline, up to 100' AGL/1034' MSL. **Rwy 21**, vehicles on roadway across centerline 891' from DER, up to 15' AGL/964' MSL. Trees beginning 1162' from DER, 54' right of centerline, up to 100' AGL/1049' MSL. Power lines beginning 3190' from DER, left and right of centerline, up to 120' AGL/1059' MSL.

14 SEP 2017 to 12 OCT 2017

14 SEP 2017 to 12 OCT 2017

TAKEOFF MINIMUMS, (OBSTACLE) DEPARTURE PROCEDURES, AND DIVERSE VECTOR AREA (RADAR VECTORS)

17229

PARSONS, KS

TRI-CITY (PPF)

TAKEOFF MINIMUMS AND (OBSTACLE)
DEPARTURE PROCEDURES
ORIG 08269 (FAA)

TAKEOFF OBSTACLE NOTES: **Rwy 17**, trees beginning 23' from DER, 253' right of centerline, up to 66' AGL/917' MSL. Trees and power poles beginning 8' from DER, 243' left of centerline, up to 56' AGL/916' MSL. **Rwy 35**, trees beginning 12' from DER, 138' right of centerline, up to 40' AGL/956' MSL. Vehicle on road 720' from DER, 7' left and right of centerline, 17' AGL/941' MSL. Trees beginning 728' from DER, 66' left of centerline, up to 20' AGL/935' MSL.

PENDER, NE

PENDER MUNI (0C4)

TAKEOFF MINIMUMS AND (OBSTACLE)
DEPARTURE PROCEDURES
ORIG 12208 (FAA)

TAKEOFF MINIMUMS: **Rwy 15**, 300-1 or std. w/min. climb of 213' per NM to 1700.

TAKEOFF OBSTACLE NOTES: **Rwy 15**, trees beginning 240' from DER, 422' right of centerline, up to 80' AGL/1539' MSL. Tree 169' from DER, 425' left of centerline, 38' AGL/1367' MSL. **Rwy 33**, trees and building beginning 264' from DER, 316' right of centerline, up to 39' AGL/1370' MSL. Trees beginning 8' from DER, 318' left of centerline, up to 80' AGL/1519' MSL.

PHILLIPSBURG, KS

PHILLIPSBURG MUNI (PHG)

TAKEOFF MINIMUMS AND (OBSTACLE)
DEPARTURE PROCEDURES
AMDT1 16091 (FAA)

TAKEOFF MINIMUMS: **Rwys 3, 21**, NA-Environmental. TAKEOFF OBSTACLE NOTES: **Rwy 13**, electrical system 4' from DER, 105' right of centerline, 4' AGL/1886' MSL. Electrical system 5' from DER, 105' left of centerline, 3' AGL/1886' MSL. Tower, trees, and road beginning 2' from DER, 305' left of centerline, up to 43' AGL/1927' MSL. Poles beginning 329' from DER, 26' left of centerline, up to 40' AGL/1921' MSL. Trees beginning 1230' from DER, 76' left of centerline, up to 43' AGL/1923' MSL. **Rwy 31**, electrical system 4' from DER, 106' left of centerline, 2' AGL/1907' MSL. Fence 33' from DER, 480' right of centerline, 4' AGL/1911' MSL. Poles beginning 71' from DER, 516' right of centerline, up to 52' AGL/1959' MSL. Trees and road beginning 323' from DER, 184' right of centerline, up to 40' AGL/1934' MSL. Road 439' from DER, 528' left of centerline, up to 15' AGL/1919' MSL. Trees and pole beginning 629' from DER, 468' left of centerline, up to 40' AGL/1944' MSL. Trees beginning 1933' from DER, 936' right of centerline, up to 40' AGL/1965' MSL. Tree 2394' from DER, 1063' left of centerline, up to 40' AGL/1974' MSL.

PITTSBURG, KS

ATKINSON MUNI (PTS)

TAKEOFF MINIMUMS AND (OBSTACLE)
DEPARTURE PROCEDURES
AMDT 1 11097 (FAA)

TAKEOFF MINIMUMS: **Rwy 4**, 300-1 or std. w/ min. climb of 362' per NM to 1200.
TAKEOFF OBSTACLE NOTES: **Rwy 4**, water tank antenna 3415' from DER, 1104' left of centerline, 149' AGL/1079' MSL. Grain tower 2322' from DER, 211' left of centerline, 89' AGL/1028' MSL. Trees beginning 216' from DER, 56' left of centerline, up to 100' AGL/971' MSL. Tree 845' from DER, 138' right of centerline, up to 100' AGL/977' MSL. **Rwy 16**, trees beginning 1017' from DER, 37' left of centerline, up to 100' AGL/989' MSL. OL on pole 609' from DER, 577' left of centerline, 52' AGL/972' MSL. Hangar and vent on hangar beginning 133' from DER, 387' right of centerline, up to 23' AGL/953' MSL. Trees beginning 1601' from DER, 135' right of centerline, up to 100' AGL/992' MSL. **Rwy 22**, Trees beginning 672' from DER, 344' left of centerline, up to 100' AGL/985' MSL. Pole 1082' from DER, 166' left of centerline, 44' AGL/969' MSL. Pole 1268' from DER, 54' right of centerline, 40' AGL/975' MSL. **Rwy 34**, trees beginning 1644' from DER, 25' left of centerline, up to 100' AGL/1039' MSL.

RED CLOUD, NE

RED CLOUD MUNI (7V7)

TAKEOFF MINIMUMS AND (OBSTACLE)
DEPARTURE PROCEDURES
ORIG 12208 (FAA)

TAKEOFF OBSTACLE NOTES: **Rwy 16**, Trees and poles beginning 10' from DER, 213' left of centerline, up to 86' AGL/1771' MSL. Rising terrain, trees, and vehicles on roads beginning 41' from DER, 39' right of centerline, up to 68' AGL/1763' MSL. **Rwy 34**, Structure, poles, vehicles on roads, and trees beginning 119' from DER, 103' left of centerline, up to 88' AGL/1838' MSL. Agriculture equipment, pole, vehicles on roads, and trees beginning 498' from DER, 168' right of centerline, up to 69' AGL/1889' MSL.

RUSHVILLE, NE

MODISETT (9V5)

TAKEOFF MINIMUMS AND (OBSTACLE)
DEPARTURE PROCEDURES
ORIG 09239 (FAA)

TAKEOFF OBSTACLE NOTES: **Rwy 14**, trees 21' from DER, 210' right of centerline, up to 47' AGL/3792' MSL. Multiple trees beginning 251' from DER, 302' left of centerline, up to 50' AGL/3805' MSL. Multiple power poles beginning 427' from DER, 31' left of centerline, up to 47' AGL/3834' MSL. Multiple power poles beginning 1179' from DER, 235' right of centerline, up to 67' AGL/3816' MSL. Multiple buildings beginning 415' from DER, 409' left of centerline, up to 25' AGL/3778' MSL. Fence, 203' from DER, 318' left of centerline, 4' AGL/3757' MSL. **Rwy 32**, terrain 964' from DER, 355' left of centerline, 0' AGL/3778' MSL. Fence, 51' from DER, 282' left of centerline, 4' AGL/3751' MSL.

14 SEP 2017 to 12 OCT 2017

14 SEP 2017 to 12 OCT 2017

17229

TAKEOFF MINIMUMS, (OBSTACLE) DEPARTURE PROCEDURES, AND DIVERSE VECTOR AREA (RADAR VECTORS)

TAKEOFF MINIMUMS, (OBSTACLE) DEPARTURE PROCEDURES, AND DIVERSE VECTOR AREA (RADAR VECTORS)

17229

RUSSELL, KS

RUSSELL MUNI (RSL)
TAKEOFF MINIMUMS AND (OBSTACLE)
DEPARTURE PROCEDURES
AMDT 1 07298 (FAA)
DEPARTURE PROCEDURE: **Rwy 17**, climb via
heading 167° to 3400 before turning east.
TAKEOFF OBSTACLE NOTES: **Rwy 17**, post 167° from
DER, 324' left of centerline, 6' AGL/1868' MSL. **Rwy 35**,
multiple poles beginning 417' from DER, 142' right
of centerline, up to 30' AGL/1890' MSL.

ST FRANCIS, KS

CHEYENNE COUNTY MUNI (SYF)
TAKEOFF MINIMUMS AND (OBSTACLE)
DEPARTURE PROCEDURES
ORIG 16315 (FAA)
TAKEOFF MINIMUMS: **Rwys 9, 27, 18, 36**, NA-
Environmental.
TAKEOFF OBSTACLE NOTES: **Rwy 14**, rising terrain
61' from DER, 366' right of centerline, 3437' MSL.
Poles beginning 2862' from DER, on centerline, up to
39' AGL/3511' MSL. **Rwy 32**, pole 9' from DER, 17'
left of centerline, 2' AGL/3392' MSL. Building 10' from
DER, 426' right of centerline, 24' AGL/3418' MSL.
Poles and trees beginning 334' from DER, 93' right of
centerline, up to 35' AGL/3422' MSL. Trees beginning
568' from DER, 75' left of centerline, up to 39'
AGL/3414' MSL.

SALINA, KS

SALINA RGNL (SLN)
TAKEOFF MINIMUMS AND (OBSTACLE)
DEPARTURE PROCEDURES
ORIG 08325 (FAA)
TAKEOFF OBSTACLE NOTES: **Rwy 4**, light on hangar
1560' from DER, 196' right of centerline, 52' AGL/1302'
MSL. **Rwy 12**, rod on obstruction light GS 1608' from
DER, 617' left of centerline, 44' AGL/1315' MSL. Trees
beginning 4018' from DER, 421' left of centerline, up to
100' AGL/1379' MSL. Trees beginning 5330' from
DER, 1917' right of centerline, up to 100' AGL/1419'
MSL. **Rwy 17**, road with vehicles 1458' from DER,
from left to right of centerline, up to 15' AGL/1314'
MSL. Pole 1505' from DER, 782' right of centerline, 12'
AGL/1312' MSL. **Rwy 18**, rising terrain beginning 537'
from DER, 338' right of centerline, up to 1309' MSL.
Road with vehicles beginning 891' from DER, 586' left
of centerline, up to 15' AGL/1314' MSL. Road with
vehicles beginning 1095' from DER, 762' right of
centerline, up to 15' AGL/1324' MSL. Trees beginning
2065' from DER, from left to right of centerline, up to
100' AGL/1409' MSL. **Rwy 22**, trees beginning 4195'
from DER, 65' right of centerline, up to 100' AGL/1399'
MSL. **Rwy 30**, trees beginning 1227' from DER, 785'
left of centerline, up to 100' AGL/1349' MSL. Trees
beginning 2400' from DER, from left to right of
centerline, up to 100' AGL/1359' MSL. **Rwy 36**, trees
beginning 367' from DER, 305' left of centerline, up to
100' AGL/1349' MSL. Trees beginning 1663' from
DER, from left to right of centerline, up to 100'
AGL/1349' MSL.

17229

TAKEOFF MINIMUMS, (OBSTACLE) DEPARTURE PROCEDURES, AND DIVERSE VECTOR AREA (RADAR VECTORS)

SCOTT CITY, KS

SCOTT CITY MUNI (TQK)
TAKEOFF MINIMUMS AND (OBSTACLE)
DEPARTURE PROCEDURES
ORIG 12040 (FAA)
TAKEOFF OBSTACLE NOTES: **Rwy 17**, vehicle on road
beginning 30' from DER, left and right of centerline, up to
15' AGL/2964' MSL. **Rwy 35**, trees beginning 501' from
DER, 524' left of centerline, up to 30' AGL/2989' MSL.

SCOTTSBLUFF, NE

WESTERN NEBRASKA RGNL/
WILLIAM B HEILIG FIELD (BFF)
TAKEOFF MINIMUMS AND (OBSTACLE)
DEPARTURE PROCEDURES
AMDT 4 93175 (FAA)
DEPARTURE PROCEDURE: **Rwy 23**, climbing right turn
to 5500 via heading 300° before proceeding on course.
Rwy 30, climb runway heading to 5500 before
proceeding on course.

SCRIBNER, NE

SCRIBNER STATE (SCB)
TAKEOFF MINIMUMS AND (OBSTACLE)
DEPARTURE PROCEDURES
ORIG 11013 (FAA)
TAKEOFF OBSTACLE NOTES: **Rwy 12**, trees beginning
644' from DER, 225' left of centerline up to 100'
AGL/1440' MSL. **Rwy 17**, aircraft on taxiway 958' from
DER, 188' left of centerline 29' AGL/1353' MSL. Trees
beginning 1391' from DER, 171' right of centerline up to
100' AGL/1420' MSL. **Rwy 30**, trees beginning 1492'
from DER, 461' left of centerline up to 100' AGL/1420'
MSL. **Rwy 35**, trees beginning 1362' from DER, 273' right
of centerline up to 100' AGL/1414' MSL.

SEWARD, NE

SEWARD MUNI (SWT)
TAKEOFF MINIMUMS AND (OBSTACLE)
DEPARTURE PROCEDURES
ORIG-A 14121 (FAA)
TAKEOFF MINIMUMS: **Rwys 4, 22**, NA - Environmental.
DEPARTURE PROCEDURE: **Rwy 16**, climb heading 168°
to 3500 before turning right. **Rwy 34**, climb heading 348°
to 3000 before turning left.

SIDNEY, NE

SIDNEY MUNI/LLOYD W CARR FIELD
(SNY)
TAKEOFF MINIMUMS AND (OBSTACLE)
DEPARTURE PROCEDURES
AMDT 1 08213 (FAA)
TAKEOFF MINIMUMS: **Rwys 3,21** NA-Environmental.

STOCKTON, KS

ROOKS COUNTY (RCP)
TAKEOFF MINIMUMS AND (OBSTACLE)
DEPARTURE PROCEDURES
ORIG 13346 (FAA)
TAKEOFF MINIMUMS: **Rwys 14, 32**, NA - environmental.

TAKEOFF MINIMUMS, (OBSTACLE) DEPARTURE PROCEDURES, AND DIVERSE VECTOR AREA (RADAR VECTORS)

17229

SUPERIOR, NE

SUPERIOR MUNI (12K)

TAKEOFF MINIMUMS AND (OBSTACLE)
DEPARTURE PROCEDURES

AMDT 1 12152 (FAA)

TAKEOFF MINIMUMS: **Rwys 18, 36**, NA -
environmental.

TAKEOFF OBSTACLE NOTES: **Rwy 14**, trees 1037'
from DER, left and right of centerline, up to 55'
AGL/1674' MSL. **Rwy 32**, rising terrain beginning 100'
from DER, 492' left of centerline, up to 1713' MSL.

SYRACUSE, KS

SYRACUSE-HAMILTON COUNTY MUNI
(3K3)

TAKEOFF MINIMUMS AND (OBSTACLE)
DEPARTURE PROCEDURES

ORIG-A 11153 (FAA)

TAKEOFF MINIMUMS: **Rwy 13**, 300-1¼ or std. w/min.
climb of 255' per NM to 3700.

DEPARTURE PROCEDURE: **Rwy 31**, climb heading
293° to 4000 before turning right.

TAKEOFF OBSTACLE NOTES: **Rwy 13**, vehicle on
road beginning 5' from DER, left and right of centerline,
up to 15' AGL/3324' MSL. Trees beginning 104' from
DER, 288' left of centerline, up to 40' AGL/3349' MSL.
Trees beginning 196' from DER, 130' right of
centerline, up to 40' AGL/3349' MSL. Tower 9042' from
DER 667' left of centerline, 303' AGL/3533' MSL.
Tower 9042' from DER 667' left of centerline, 303'
AGL/3533' MSL. **Rwy 18**, grain bin 465' from DER,
506' right of centerline, 21' AGL/3331' MSL. Water
tower 1898' from DER, 393' left of centerline, 99'
AGL/3399' MSL. **Rwy 31**, vehicle on road beginning
26' from DER, 328' left of centerline, up to 15'
AGL/3324' MSL. **Rwy 36**, power lines beginning 1596'
from DER, left and right of centerline, up to 52'
AGL/3367' MSL.

TECUMSEH, NE

TECUMSEH MUNI (0G3)

TAKEOFF MINIMUMS AND (OBSTACLE)
DEPARTURE PROCEDURES

ORIG 13178 (FAA)

TAKEOFF OBSTACLE NOTES: **Rwy 15**, trees
beginning 372' from DER, 535' left of centerline, up to
50' AGL/1322' MSL. **Rwy 33**, trees beginning 386'
from DER, 149' right of centerline, up to 50' AGL/1336'
MSL. Trees beginning 390' from DER, 406' left of
centerline, up to 50' AGL/1345' MSL. Vehicle on road
beginning 373' from DER, 476' right of centerline, up to
15' AGL/1326' MSL.

TEKAMAH, NE

TEKAMAH MUNI (TQE)

TAKEOFF MINIMUMS AND (OBSTACLE)
DEPARTURE PROCEDURES

AMDT 3 17089 (FAA)

DEPARTURE PROCEDURE: **Rwy 33**, climb heading
331° to 1500 before turning left.

TAKEOFF OBSTACLE NOTES: **Rwy 33**, building peak
98' from DER, 421' right of centerline, 1044' MSL.

THEDFORD, NE

THOMAS COUNTY (TIF)

TAKEOFF MINIMUMS AND (OBSTACLE)
DEPARTURE PROCEDURES

AMDT 1 08269 (FAA)

TAKEOFF OBSTACLE NOTES: **Rwy 11**, trees and rising
terrain beginning 36' from DER, 458' right of centerline, up
to 75' AGL/3054' MSL. Vehicles on road beginning 749'
from DER, 351' left of centerline, up to 17' AGL/2936' MSL.
Rwy 29, trees and rising terrain beginning 15' from
DER, 223' left of centerline, up to 75' AGL/3034' MSL.

TOPEKA, KS

TOPEKA RGNL (FOE)

TAKEOFF MINIMUMS AND (OBSTACLE)
DEPARTURE PROCEDURES

ORIG-A 16231 (FAA)

TAKEOFF OBSTACLE NOTES: **Rwy 3**, trees beginning
1424' from DER, 217' left of centerline, up to 59' AGL/1099'
MSL. Tree 1523' from DER, 370' right of centerline, 49'
AGL/1088' MSL. **Rwy 31**, rising terrain 38' from DER, 441'
right of centerline, 1064' MSL.

PHILIP BILLARD MUNI (TOP)

TAKEOFF MINIMUMS AND (OBSTACLE)
DEPARTURE PROCEDURES

AMDT 1 09015 (FAA)

TAKEOFF MINIMUMS: **Rwy 22**, 200-1¼ or std. w/min.
climb of 286' per NM to 1200.

DEPARTURE PROCEDURE: **Rwy 22**, climb heading 224°
to 1900 before turning right. **Rwy 31**, climb heading 309° to
1800 before turning left.

TAKEOFF OBSTACLE NOTES: **Rwy 4**, antenna 1049' from
DER, 528' left of centerline, 57' AGL/927' MSL. Pole 996'
from DER, 382' left of centerline, 38' AGL/908' MSL. **Rwy 13**,
tree 378' from DER, 413' right of centerline, 100'
AGL/912' MSL. Vehicle on road 80' from DER, 371' left of
centerline, 15' AGL/889' MSL. **Rwy 18**, trees beginning
1062' from DER, 329' left of centerline, up to 100'
AGL/1007' MSL. Trees beginning 696' from DER, 201'
right of centerline, up to 100' AGL/993' MSL. Pole 2276'
from DER, 491' right of centerline, 64' DER, 386' left of
centerline, up to 150' AGL/1031' MSL. Trees beginning
1495' from DER, on centerline, up to 100' AGL/946' MSL.
Trees beginning 1722' from DER, 248' right of centerline,
up to 100' AGL/945' MSL. Elevator 3783' from DER, 947'
left of centerline, 131' AGL/1001' MSL. **Rwy 31**, trees
beginning 1019' from DER, 693' left of centerline, up to
100' AGL/977' MSL. **Rwy 36**, trees beginning 3026' from
DER, 265' left of centerline, up to 100' AGL/975' MSL.
Rising terrain with trees beginning 1.1 NM from DER, on
centerline, up to 100' AGL/1129' MSL.

14 SEP 2017 to 12 OCT 2017

14 SEP 2017 to 12 OCT 2017

17229

TAKEOFF MINIMUMS, (OBSTACLE) DEPARTURE PROCEDURES, AND DIVERSE VECTOR AREA (RADAR VECTORS)

TAKEOFF MINIMUMS, (OBSTACLE) DEPARTURE PROCEDURES, AND DIVERSE VECTOR AREA (RADAR VECTORS)

17229

TRIBUNE, KS

TRIBUNE MUNI (5K2)

TAKEOFF MINIMUMS AND (OBSTACLE)

DEPARTURE PROCEDURES

ORIG 15232 (FAA)

TAKEOFF MINIMUMS: **Rwy 35**, 400-1½ or std. w/min. climb of 475' per NM to 4200.

TAKEOFF OBSTACLE NOTES: **Rwy 17**, vehicle 456' from DER, 622' right of centerline, up to 17' AGL/3646' MSL. Power lines 2826' from DER, left and right of centerline, up to 80' AGL/3689' MSL. **Rwy 35**, light support structure 10' from DER, 20' right of centerline, 6' AGL/3606' MSL. Terrain 37' from DER, 477' left of centerline, 3606' MSL. Vehicles and poles beginning 524' from DER, left and right of centerline, up to 26' AGL/3644' MSL. Pole 1069' from DER, 579' left of centerline, 38' AGL/3638' MSL. Tower 3233' from DER, 757' right of centerline, 120' AGL/3716' MSL. Water tower 4329' from DER, 1263' left of centerline, 123' AGL/3738' MSL. Towers beginning 1.1 NM from DER, 465' right of centerline, up to 400' AGL/3991' MSL.

ULYSSES, KS

ULYSSES (ULS)

TAKEOFF MINIMUMS AND (OBSTACLE)

DEPARTURE PROCEDURES

AMDT 2B 13178 (FAA)

TAKEOFF MINIMUMS: **Rwy 12**, 500-3 or std. with a min. climb of 292' per NM to 3700. **Rwy 17**, 300-1½ or std. w/min. climb of 281' per NM to 3500.DEPARTURE PROCEDURE: **Rwy 17**, climb to 3700 before turning on course.

TAKEOFF OBSTACLE NOTES: **Rwy 12**, antenna tower 4193' from DER, 1375' right of centerline, 164' AGL/3218' MSL. **Rwy 17**, tower 1.38 NM from DER, 124' right of centerline, 249' AGL/3305' MSL.

VALENTINE, NE

MILLER FIELD (VTN)

TAKEOFF MINIMUMS AND (OBSTACLE)

DEPARTURE PROCEDURES

AMDT 2 05132 (FAA)

DEPARTURE PROCEDURE: **Rwy 3**, climb heading 028° to 4000 before proceeding on course. **Rwy 32**, climb heading 317° to 4000 before proceeding on course.

TAKEOFF OBSTACLE NOTES: **Rwy 14**, multiple fences beginning 398' from DER, 495' right of centerline, up to 5' AGL/2593' MSL.

WAHOO, NE

WAHOO MUNI (AHQ)

TAKEOFF MINIMUMS AND (OBSTACLE)

DEPARTURE PROCEDURES

ORIG 08213 (FAA)

TAKEOFF MINIMUMS: **Rwys 13, 31**, NA-Environmental. TAKEOFF OBSTACLE NOTES: **Rwy 2**, terrain beginning 1' from DER, 360' left of centerline, up to 1229' MSL. Terrain beginning 1' from DER, 360' right of centerline, up to 1224' MSL. Pole 725' from DER, 539' left of centerline, 29' AGL/1258' MSL. Vehicles on road beginning 740' from DER, from left to right of centerline, up to 15' AGL/1244' MSL. **Rwy 20**, fence, buildings, trees, power poles, and street lights beginning 244' from DER, 401' right of centerline, up to 52' AGL/1277' MSL. Vehicles on road, power poles, and wires beginning 500' from DER, 477' left of centerline, up to 29' AGL/1246' MSL. Trees beginning 2510' from DER, 631' left of centerline, up to 74' AGL/1291' MSL. Elevator 3446' from DER, 474' left of centerline, 114' AGL/1329' MSL.

WAKEENEY, KS

TREGO WAKEENEY (0H1)

TAKEOFF MINIMUMS AND (OBSTACLE)

DEPARTURE PROCEDURES

ORIG 15344 (FAA)

TAKEOFF MINIMUMS: **Rwy 35**, 300-1½ or std. w/min. climb of 262' per NM to 2800.

TAKEOFF OBSTACLE NOTES: **Rwy 17**, poles beginning 15' from DER, 302' right of centerline, up to 29' AGL/2451' MSL. Poles beginning 20' from DER, 299' left of centerline, up to 39' AGL/2450' MSL. Vehicle on road 52' from DER, 202' left of centerline, 15' AGL/2436' MSL. Vehicles on road beginning 48' from DER, 2' right of centerline, up to 15' AGL/2441' MSL. Trees beginning 214' from DER, 54' right of centerline, up to 40' AGL/2460' MSL. **Rwy 35**, signs beginning 482' from DER, 332' right of centerline, up to 80' AGL/2522' MSL. Poles beginning 1113' from DER, 15' left of centerline, up to 31' AGL/2480' MSL. Poles beginning 15' from DER, 159' right of centerline, up to 37' AGL/2481' MSL. Building 199' from DER, 349' right of centerline, 19' AGL/2459' MSL. Building 270' from DER, 559' right of centerline, 23' AGL/2469' MSL. Building 426' from DER, 430' right of centerline, 22' AGL/2464' MSL. Building 1621' from DER, 599' right of centerline, 59' AGL/2502' MSL. Tower 6817' from DER, 1667' left of centerline, 200' AGL/2658' MSL. Trees beginning 1' from DER, 135' left of centerline, up to 40' AGL/2444' MSL. Trees beginning 1465' from DER, 109' right of centerline, up to 40' AGL/2478' MSL.

WASHINGTON, KS

WASHINGTON COUNTY VETERAN'S MEMORIAL (K38)

TAKEOFF MINIMUMS AND (OBSTACLE)

DEPARTURE PROCEDURES

ORIG 11013 (FAA)

TAKEOFF OBSTACLE NOTES: **Rwy 17**, vehicles on road beginning 127' from DER, 500' right of centerline, up to 15' AGL/1444' MSL. Power lines beginning 1746' from DER, 944' left of centerline, up to 100' AGL/1529' MSL. Trees beginning 734' from DER, 305' right of centerline, up to 100' AGL/1529' MSL. **Rwy 35**, vehicles on road beginning 185' from DER, 504' left of centerline, up to 15' AGL/1454' MSL. Trees beginning 1228' from DER, 695' left of centerline, up to 100' AGL/1539' MSL. Trees 2543' from DER, 617' left of centerline, up to 100' AGL/1529' MSL.

17229

TAKEOFF MINIMUMS, (OBSTACLE) DEPARTURE PROCEDURES, AND DIVERSE VECTOR AREA (RADAR VECTORS)

TAKEOFF MINIMUMS, (OBSTACLE) DEPARTURE PROCEDURES, AND DIVERSE VECTOR AREA (RADAR VECTORS)

17229

WAYNE, NE

WAYNE MUNI/ STAN MORRIS FLD (LCG)

TAKEOFF MINIMUMS AND (OBSTACLE)

DEPARTURE PROCEDURES

AMDT 4 11125 (FAA)

TAKEOFF MINIMUMS: **Rwys 13, 31**, NA-
Environmental. **Rwy 5**, 300-1¼ or std. w/ min. climb of
260' per NM to 1700.

DEPARTURE PROCEDURE: **Rwy 18**, climb heading
175° to 1900 before turning right. **Rwy 23**, climb
heading 228° to 1900 before turning right.

TAKEOFF OBSTACLE NOTES: **Rwy 5**, trees beginning
2799' from DER, 442' left of centerline, up to 48'
AGL/1507' MSL. Fence 39' from DER, 347' right of
centerline, 9' AGL/1429' MSL. Trees and poles
beginning 399' from DER, 170' right of centerline, up to
66' AGL/1603' MSL. **Rwy 18**, trees beginning 38' from
DER, 275' left of centerline, up to 17' AGL/1446' MSL.
Terrain beginning 195' from DER, 279' left of
centerline, up to 1438' MSL. Vehicle on road beginning
664' from DER, crossing left to right, up to 15'
AGL/1455' MSL. **Rwy 23**, airport beacon 114' from
DER, 458' left of centerline, 55' AGL/1489' MSL.
Building 422' from DER, 280' left of centerline, 16'
AGL/1445' MSL. Trees and pole beginning 291' from
DER, 142' left of centerline, up to 61' AGL/1490' MSL.
Trees and poles beginning 225' from DER, 77' right of
centerline, up to 74' AGL/1503' MSL. Building 1287'
from DER, 507' right of centerline, 40' AGL/1469' MSL.
Rwy 36, tree and pole beginning 93' from DER, 294'
left of centerline, up to 27' AGL/1453' MSL. Pole 422'
from DER, 436' right of centerline, 27' AGL/1453' MSL.

WELLINGTON, KS

WELLINGTON MUNI (EGT)

TAKEOFF MINIMUMS AND (OBSTACLE)

DEPARTURE PROCEDURES

ORIG 07298 (FAA)

TAKEOFF OBSTACLE NOTES: **Rwy 17**, terrain 104'
from DER, 488' right of centerline, 0' AGL/1275' MSL.

WICHITA, KS

BEECH FACTORY (BEC)

TAKEOFF MINIMUMS AND (OBSTACLE)

DEPARTURE PROCEDURES

AMDT 1 13234 (FAA)

TAKEOFF OBSTACLE NOTES: **Rwy 1**, runway lights 9'
from DER, 90' left of centerline, 3' AGL/1410' MSL.
Runway lights 10' from DER, 89' right of centerline, 2'
AGL/1409' MSL. Trees beginning 176' from DER, 89'
right of centerline, up to 38' AGL/1439' MSL. Trees
beginning 1731' from DER, 22' right of centerline, up to
55' AGL/1455' MSL. **Rwy 19**, runway lights 8' from DER,
89' left of centerline, 3' AGL/1373' MSL. Runway lights 9'
from DER, 90' right of centerline, 3' AGL/1372' MSL.
Light 10' from DER, 30' left of centerline, 2' AGL/1373'
MSL. Trees beginning 2687' from DER, 1027' right of
centerline, up to 67' AGL/1443' MSL.

COLONEL JAMES JABARA (AAO)

TAKEOFF MINIMUMS AND (OBSTACLE)

DEPARTURE PROCEDURES

AMDT 2 83328 (FAA)

DEPARTURE PROCEDURE: **Rwy 18**, south and west
departures (180° CW 270°) climb to 2000 via runway
heading before proceeding on course.

WICHITA DWIGHT D EISENHOWER NATIONAL (ICT)

TAKEOFF MINIMUMS AND (OBSTACLE)

DEPARTURE PROCEDURES

ORIG-B 15036 (FAA)

TAKEOFF OBSTACLE NOTES: **Rwy 1L**, tree and poles
beginning 1219' from DER, 679' left of centerline, up to
34' AGL/1366' MSL. **Rwy 14**, antenna tower 2651' from
DER, 1205' right of centerline, 85' AGL/1417' MSL.

WINFIELD/ARKANSAS CITY, KS

STROTHER FIELD (WLD)

TAKEOFF MINIMUMS AND (OBSTACLE)

DEPARTURE PROCEDURES

ORIG 11069 (FAA)

TAKEOFF OBSTACLE NOTES: **Rwy 13**, trees beginning
1939' from DER, 785' left of centerline, up to 100'
AGL/1249' MSL. **Rwy 31**, trees beginning 1649' from
DER, 59' left of centerline, up to 100' AGL/1264' MSL.
Rwy 35, trees beginning 821' from DER, 674' right of
centerline, up to 100' AGL/1254' MSL.

YORK, NE

YORK MUNI (JYR)

TAKEOFF MINIMUMS AND (OBSTACLE)

DEPARTURE PROCEDURES

AMDT 1 09239 (FAA)

TAKEOFF MINIMUMS: **Rwys 5, 23**, NA-Environmental.
TAKEOFF OBSTACLE NOTES: **Rwy 35**, Catenary
beginning 1290' from DER, 467' right of centerline, up to
79' AGL/1719' MSL. Pole 1396' from DER, 220' left of
centerline, 55' AGL/1700' MSL.

17229

TAKEOFF MINIMUMS, (OBSTACLE) DEPARTURE PROCEDURES, AND DIVERSE VECTOR AREA (RADAR VECTORS)