

(SKORR1.SKORR) 09295

# SKORR ONE DEPARTURE (RNAV)

SL-610 (FAA)

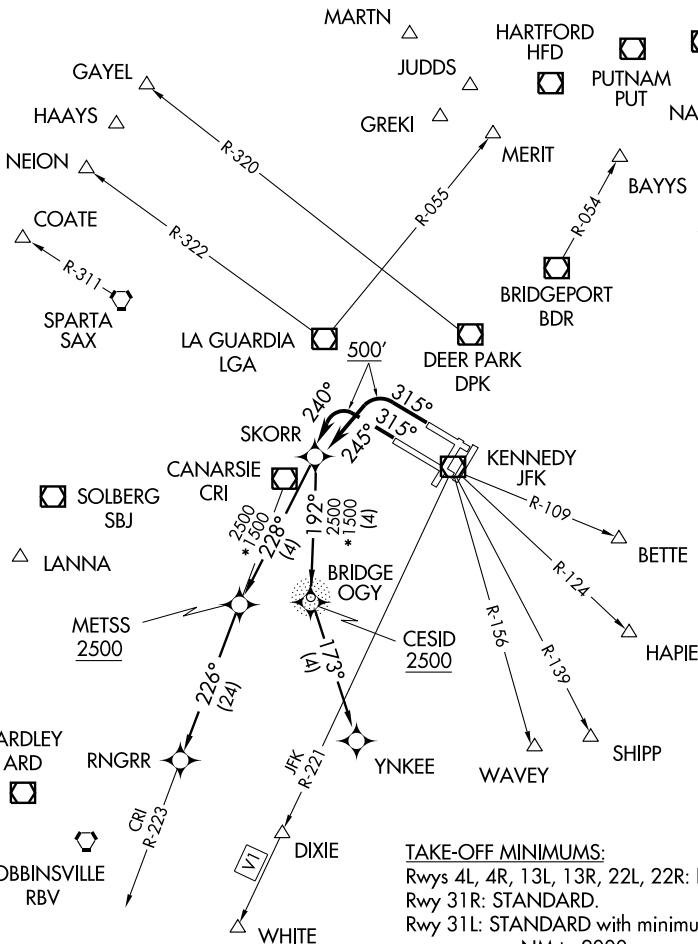
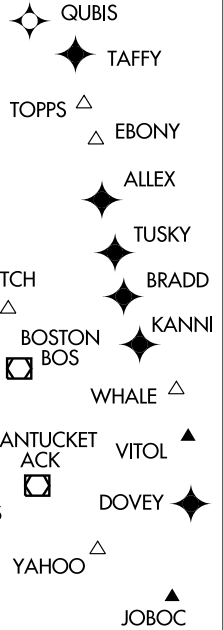
NEW YORK / JOHN F. KENNEDY INTL (JFK)

NEW YORK, NEW YORK

ATIS DEP  
115.1 128.725  
CLNC DEL  
135.05 348.6  
NEW YORK DEP CON  
135.9 353.750

NOTE: DME/DME/IRU or GPS Required.  
NOTE: RNAV 1.

NOTE: This DP requires a minimum climb of 500' per NM to 500', then 280' per NM to 2500'. (ATC)  
NOTE: RADAR REQUIRED.  
NOTE: Rwy 31L do not exceed 230 KIAS until passing SKORR WP.  
NOTE: Rwy 31R via YNKEE TRANSITION:  
Do not exceed 230 KIAS until passing SKORR WP.



**TAKE-OFF MINIMUMS:**  
Rwys 4L, 4R, 13L, 13R, 22L, 22R: NA - Noise Abatement.  
Rwy 31R: STANDARD.  
Rwy 31L: STANDARD with minimum climb of 210 feet per NM to 2000.

NOTE: Chart not to scale.  
(NARRATIVE ON FOLLOWING PAGE)

NE-2, 22 OCT 2009 to 19 NOV 2009

NE-2, 22 OCT 2009 to 19 NOV 2009

(SKORR1.SKORR) 09295

NEW YORK, NEW YORK  
NEW YORK / JOHN F. KENNEDY INTL (JFK)