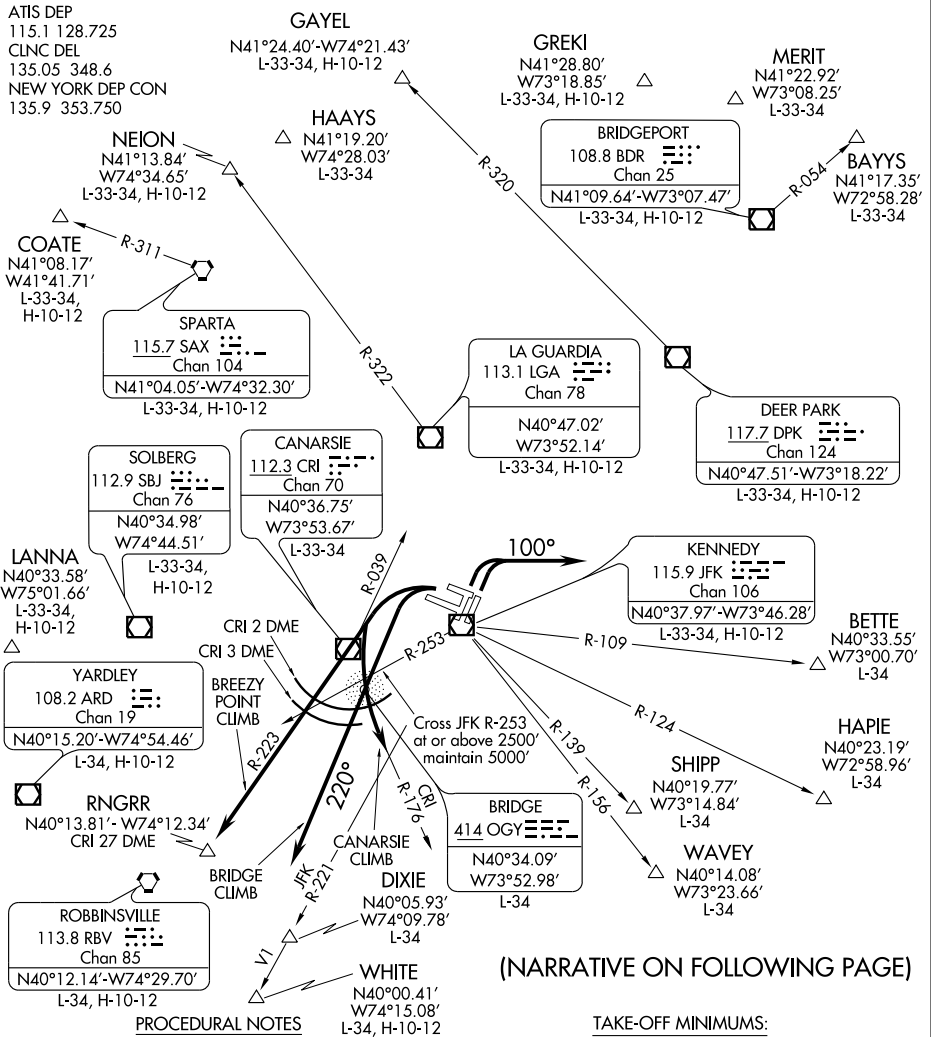


KENNEDY ONE DEPARTURE

SL-610 (FAA)

NEW YORK/JOHN F. KENNEDY INTL (JFK)
NEW YORK, NEW YORK



NE-2, 19 NOV 2009 to 17 DEC 2009

NE-2, 19 NOV 2009 to 17 DEC 2009

(NARRATIVE ON FOLLOWING PAGE)

TAKE-OFF MINIMUMS:

- Rwys 4L, 4R, 13L, 22L, 22R, 31R: STANDARD.
- Rwy 13R: 300-1½ or STANDARD with minimum climb of 250' per NM to 300'.
- Rwy 31L, all climbs: STANDARD with minimum obstacle climb of 210' per NM to 2000', ATC Climb Gradients: BREEZY POINT CLIMB, 343' per NM to 2500', BRIDGE CLIMB, 534' per NM to 2500', CANARSIE CLIMB, 440' per NM to 2500'.
- Rwy 31R, ATC Climb Gradients: BREEZY POINT CLIMB, 287' per NM to 2500', BRIDGE CLIMB, 431' per NM to 2500', CANARSIE CLIMB, 357' per NM to 2500'.

- NOTE: RADAR REQUIRED.**
- NOTE: BAYYS departures expect vectors to BDR VOR/DME or BDR R-054.
 - NOTE: BETTE departures expect vectors to JFK R-109.
 - NOTE: COATE departures expect vectors to SAX VORTAC or SAX R-311.
 - NOTE: NEON departures expect vectors to JFK R-221.
 - NOTE: HAPIE departures expect vectors to JFK R-124.
 - NOTE: RBV departures expect vectors to RBV after RINGRR.
 - NOTE: SHIPP departures expect vectors to JFK R-139.
 - NOTE: WAVY departures expect vectors to JFK R-156.
 - NOTE: WHITE departures expect vectors to V1.

NOTE: Chart not to scale.