

JACKSONVILLE, FLORIDA

AL-5570 (FAA)

RNAV (GPS) RWY 31

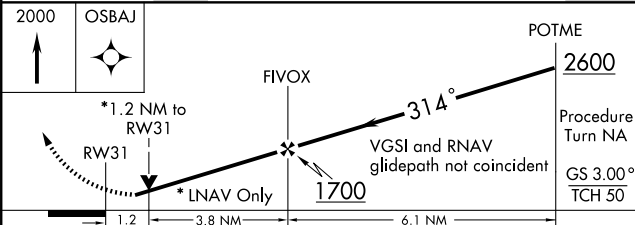
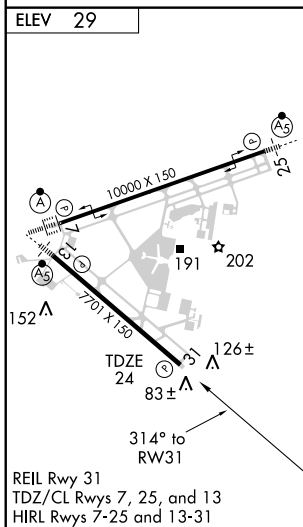
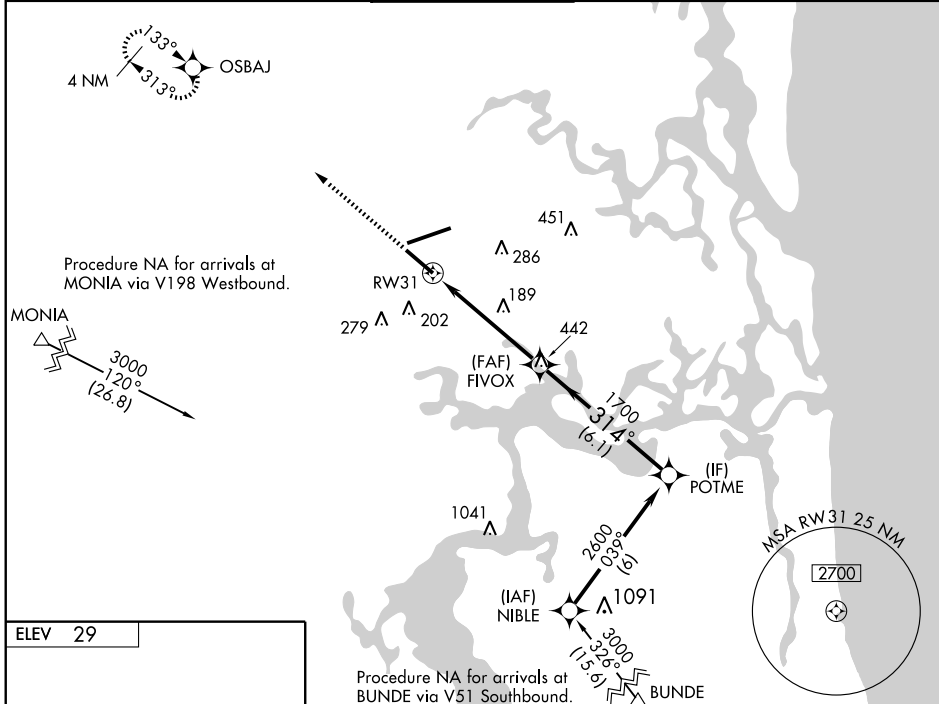
JACKSONVILLE INTL (JAX)

WAAS CH 40199 W31A	APP CRS 314°	Rwy Idg TDZE Apt Elev	7701 24 29
--	------------------------	-----------------------------	---------------------------------------

▼ DME/DME RNP-0.3 NA. Baro-VNAV NA below -15°C (5°F).
▲ VDP and Baro-VNAV NA when using Craig Muni altimeter setting.
ASR If local altimeter setting not received, use Craig Muni altimeter setting and increase LPV DA to 368 feet, LNAV/VNAV DA to 424 feet and all MDAs 40 feet.

MISSED APPROACH: Climb to 2000 direct OSBAJ and hold.

ATIS 125.85	JACKSONVILLE APP CON 119.0 335.6	JACKSONVILLE TOWER 118.3 317.7	GND CON 121.9 348.6	CLNC DEL 119.5 290.275
-----------------------	--	--	-------------------------------	----------------------------------



CATEGORY	A	B	C	D
LPV DA	336-1 312 (400-1)			
LNAV/VNAV DA	392-1¼ 368 (400-1¼)			
LNAV MDA	460-1	436 (500-1)	460-1¼ 436 (500-1¼)	460-1½ 436 (500-1½)
CIRCLING	520-1¼	491 (500-1¼)	520-1½ 491 (500-1½)	620-2 591 (600-2)

JACKSONVILLE, FLORIDA
Amdt 1 08269

30° 30' N - 81° 41' W

JACKSONVILLE INTL (JAX)

RNAV (GPS) RWY 31

SE-3, 11 MAR 2010 to 08 APR 2010

SE-3, 11 MAR 2010 to 08 APR 2010