

LOC/DME I-SP <b>108.3</b> Chan 20	APP CRS <b>059°</b>	Rwy Idg TDZE Apt Elev	<b>7006</b> <b>94</b> <b>99</b>
---	------------------------	-----------------------------	---------------------------------------

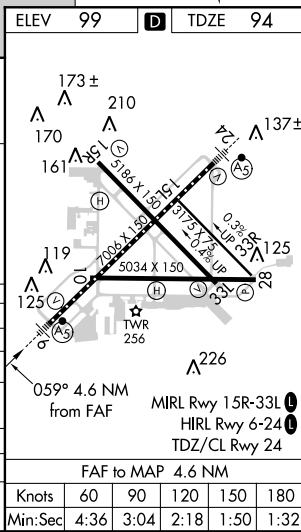
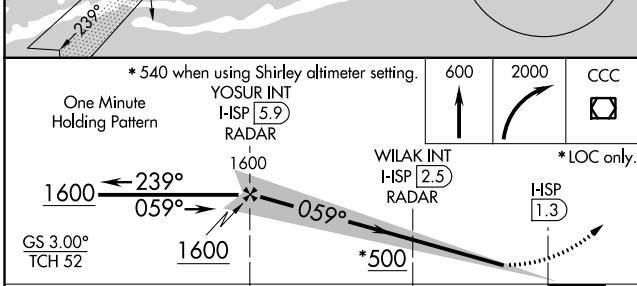
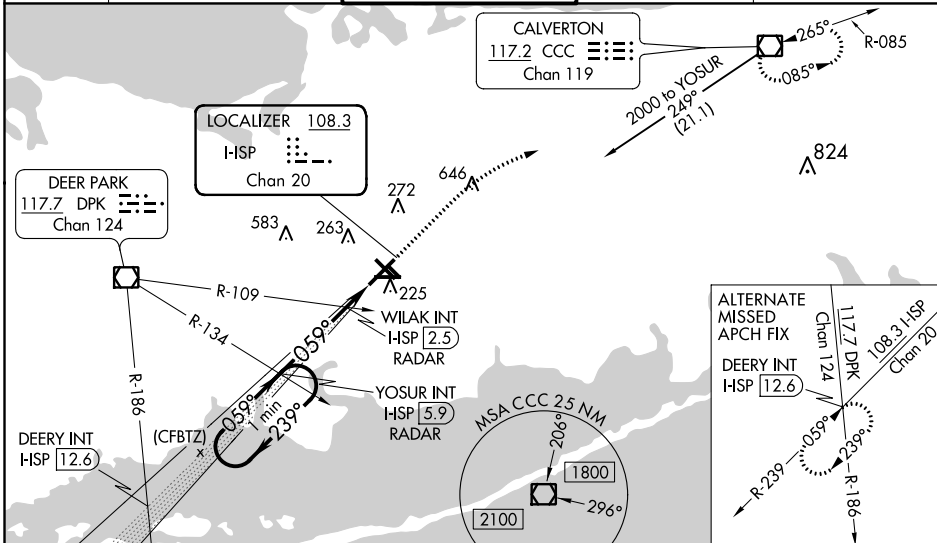
# ILS or LOC RWY 6

## LONG ISLAND MAC ARTHUR (ISP)

**⚠** When local altimeter setting not received, use Shirley altimeter setting and increase all DA 28 feet and all MDA 40 feet, increase S-LOC 6 Cat C and D visibility to RVR 4500 and Circling Cat C and D visibility ½ mile. Increase WILAK fix minimums S-LOC 6 Cat C and D visibility to RVR 3500. For inoperative MALSR, increase S-LOC 6 Cat C and D visibility to RVR 6000. Increase WILAK fix minimums S-LOC 6 Cats C and D visibility to RVR 5500. \*\*RVR 1800 authorized with the use of FD or AP or HUD to DA.

MALSR  
MISSED APPROACH:  
Climb to 600 then climbing right turn to 2000 direct CCC VOR/DME and hold.

ATIS <b>120.725</b>	NEW YORK APP CON <b>120.05 343.75</b>	LONG ISLAND TOWER * <b>119.3</b> (CTAF) <b>1335.5</b>	GND CON <b>135.3</b>	CLNC DEL <b>121.85</b>
------------------------	--	--	-------------------------	---------------------------



ELEV	99	D	TDZE	94	
CATEGORY	A	B	C	D	
S-ILS 6	** 294/24 200 (200-½)				
S-LOC 6	500/24	406 (500-½)	500/40	406 (500-¾)	
CIRCLING	600-1 501 (600-1)	660-1 561 (600-1)	660-1½ 561 (600-1½)	960-2¾ 861 (900-2¾)	
WILAK FIX MINIMUMS (DUAL VOR RECEIVERS OR DME REQUIRED)					
S-LOC 6	440/24	346 (400-½)	440/30	346 (400-¾)	
CIRCLING	600-1 501 (600-1)	660-1 561 (600-1)	660-1½ 561 (600-1½)	960-2¾ 861 (900-2¾)	
FAF to MAP 4.6 NM					
Knots	60	90	120	150	180
Min:Sec	4:36	3:04	2:18	1:50	1:32

NE-2, 27 APR 2017 to 25 MAY 2017

NE-2, 27 APR 2017 to 25 MAY 2017