

IOWA CITY, IOWA

AL-682 (FAA)

# RNAV (GPS) RWY 30

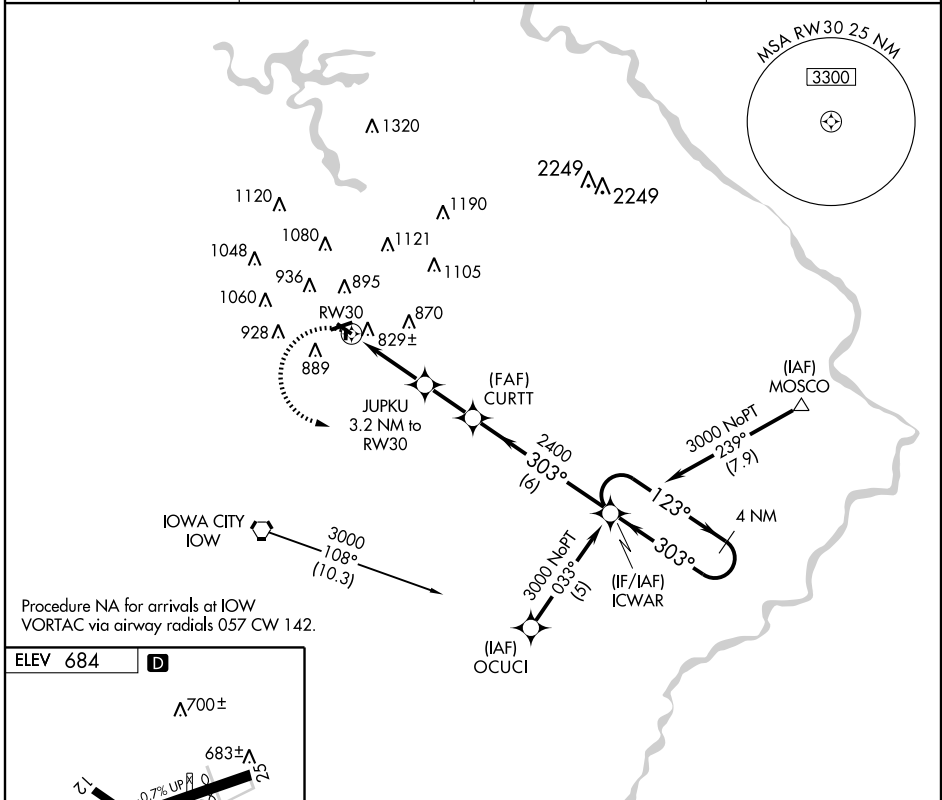
IOWA CITY MUNI (IOW)

APP CRS	Rwy Idg	<b>3900</b>
<b>303°</b>	TDZE	<b>656</b>
	Apt Elev	<b>684</b>

**▼** DME/DME RNP-0.3 NA. Visibility reduction by helicopters NA.  
**▲** When local altimeter setting not received, use Cedar Rapids altimeter setting and increase all MDA 80 feet.

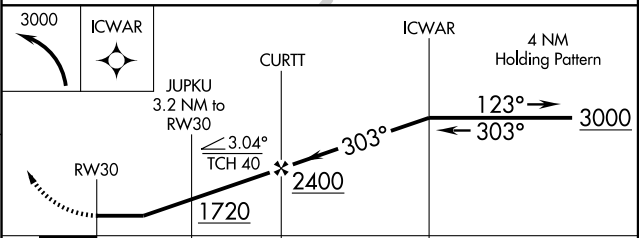
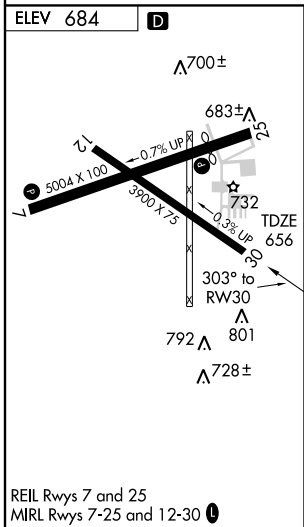
MISSED APPROACH: Climbing left turn to 3000 direct ICWAR and hold.

ASOS <b>128.075</b>	CEDAR RAPIDS APP CON * <b>119.7 266.8</b>	CLNC DEL <b>119.05</b>	UNICOM <b>122.8 (CTAF) 0</b>
------------------------	--	---------------------------	---------------------------------



NC-3, 31 MAY 2012 to 28 JUN 2012

NC-3, 31 MAY 2012 to 28 JUN 2012



CATEGORY	A	B	C	D
LNAV MDA	1100-1 444 (500-1)			NA
CIRCLING	1260-1 576 (600-1)			NA

IOWA CITY, IOWA  
Orig 10098

41°38'N - 91°33'W

# RNAV (GPS) RWY 30