

MOUNT STERLING, KENTUCKY

AL-6224 (FAA)

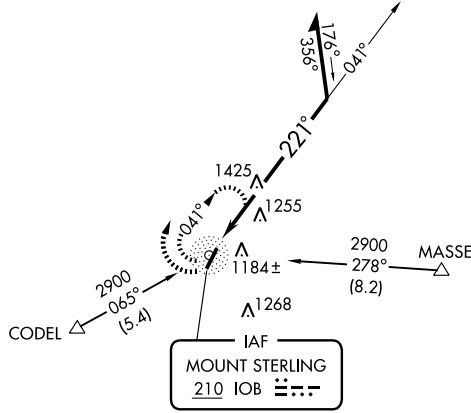
NDB IOB <b>210</b>	APP CRS <b>221°</b>	Rwy Idg <b>5000</b> TDZE <b>1007</b> Apt Elev <b>1019</b>
-----------------------	------------------------	---

# NDB RWY 21

MOUNT STERLING-MONTGOMERY COUNTY (IOB)

	MISSED APPROACH: Climbing right turn to 2900 in IOB NDB holding pattern.
--	--

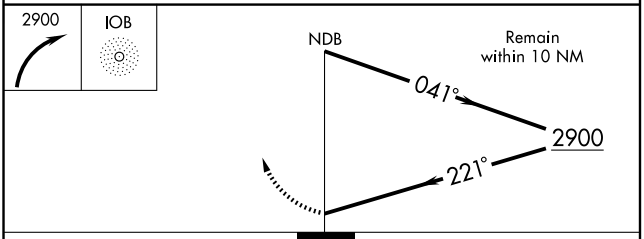
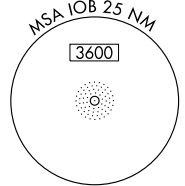
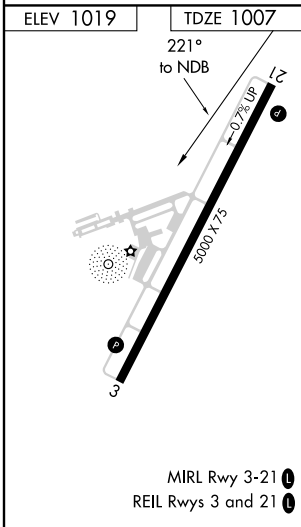
AWOS-3 <b>120.675</b>	LEXINGTON APP CON <b>120.15 259.3</b>	UNICOM <b>122.8 (CTAF)</b>
--------------------------	--	-------------------------------



2049  
△

SE-1, 31 MAY 2012 to 28 JUN 2012

SE-1, 31 MAY 2012 to 28 JUN 2012



CATEGORY	A	B	C	D
S-21	1840-1 833 (900-1)	1840-1¼ 833 (900-1¼)	1840-2½ 833 (900-2½)	1840-2¾ 833 (900-2¾)
CIRCLING	1840-1 820 (900-1)	1840-1¼ 820 (900-1¼)	1840-2½ 820 (900-2½)	1840-2¾ 820 (900-2¾)

MOUNT STERLING, KENTUCKY  
Amdt 1C 12096

MOUNT STERLING-MONTGOMERY COUNTY (IOB)  
38°03'N-83°59'W

# NDB RWY 21