


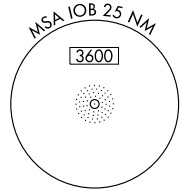
NDB IOB	APP CRS	Rwy Idg	5000
<u>210</u>	<u>018°</u>	TDZE	1020
		Apt Elev	1019

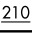
# NDB or GPS RWY 3

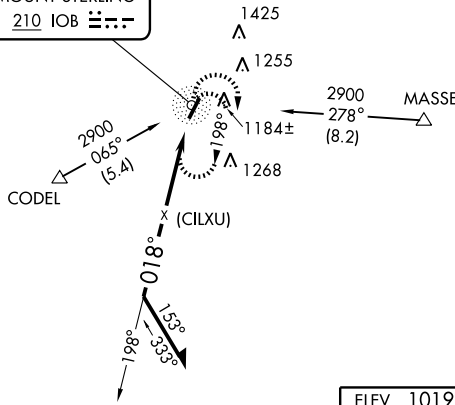
MOUNT STERLING-MONTGOMERY COUNTY (IOB)

	MISSED APPROACH: Climbing right turn to 2900 in IOB NDB holding pattern.
--	--

AWOS-3 <b>120.675</b>	LEXINGTON APP CON <b>120.15 259.3</b>	UNICOM <b>122.8 (CTAF)</b>
--------------------------	--	-------------------------------

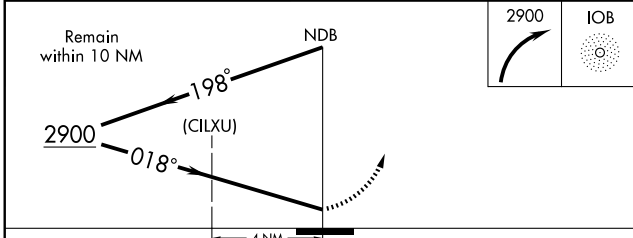
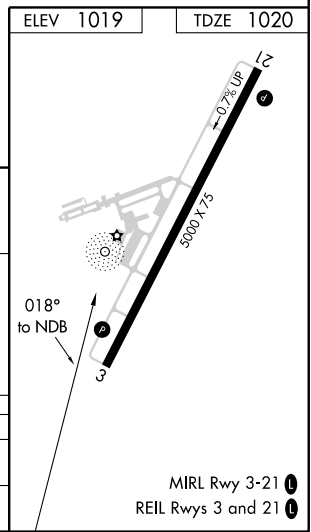


IAF  
**MOUNT STERLING**  
210 IOB 




SE-1, 31 MAY 2012 to 28 JUN 2012

SE-1, 31 MAY 2012 to 28 JUN 2012



CATEGORY	A	B	C	D
S-3	1660-1	640 (700-1)	1660-1 <sup>3</sup> / <sub>4</sub> 640 (700-1 <sup>3</sup> / <sub>4</sub> )	1660-2 640 (700-2)
CIRCLING	1660-1	640 (700-1)	1660-1 <sup>3</sup> / <sub>4</sub> 640 (700-1 <sup>3</sup> / <sub>4</sub> )	1660-2 640 (700-2)

MIRL Rwy 3-21   
 REIL Rws 3 and 21 