

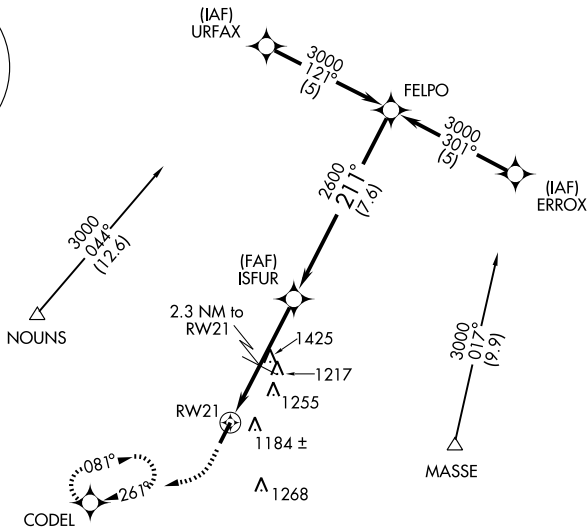
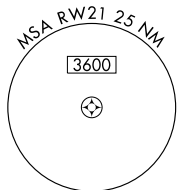
GPS RWY 21

MOUNT STERLING-MONTGOMERY COUNTY (IOB)

APP CRS 211°	Rwy Idg 5000
	TDZE 1006
	Apt Elev 1019

MISSED APPROACH: Climb to 1800 then climbing right turn to 3000 direct CODEL WP and hold.

AWOS-3 120.675	LEXINGTON APP CON 120.15 259.3	UNICOM 122.8 (CTAF)
--------------------------	--	-------------------------------



SE-1, 31 MAY 2012 to 28 JUN 2012

SE-1, 31 MAY 2012 to 28 JUN 2012

ELEV 1019	TDZE 1006
-----------	-----------

MIRL Rwy 3-21 **1**
REIL Rws 3 and 21 **1**

2549 **1**

1800	3000	CODEL
------	------	-------

	2.3 NM	2.7 NM	7.6 NM	
CATEGORY	A	B	C	D
S-21	1460-1	454 (500-1)	1460-1¼ 454 (500-1¼)	1460-1½ 454 (500-1½)
CIRCLING	1540-1	521 (600-1)	1540-1½ 521 (600-1½)	1580-2 561 (600-2)