


LOC I-HOV 110.5	APP CRS 193°	Rwy Idg 10301
		TDZE 1330
		Apt Elev 1333

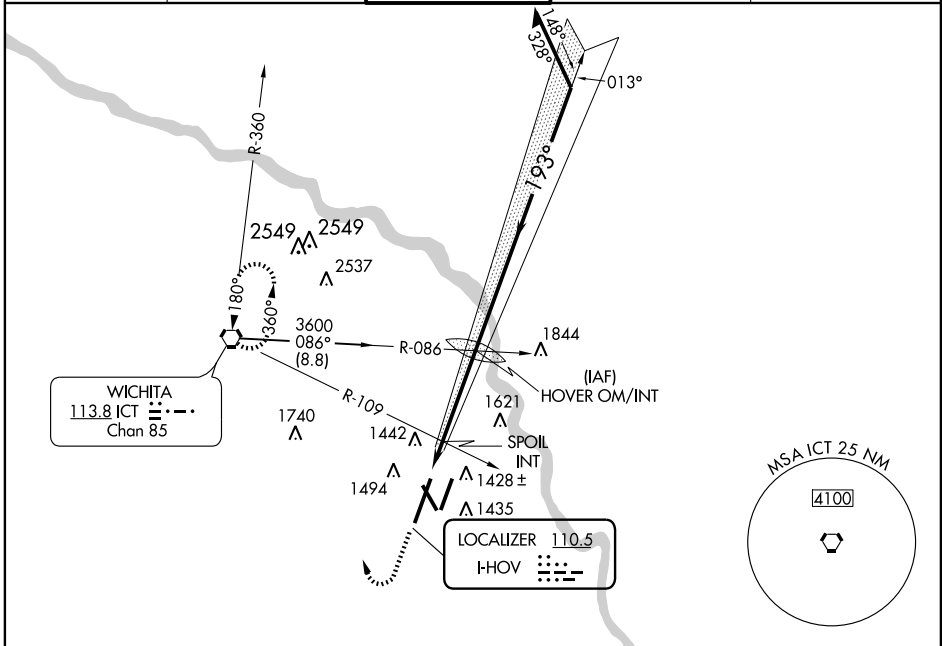
ILS or LOC RWY 19R

WICHITA MID-CONTINENT (ICT)

⚠ For inoperative MALS, increase SPOIL Int. minimums S-LOC 19R Cat. D and E visibility to RVR 5000. **** VIS Cat A/B/C/D RVR. 1800 authorized with the use of FD or AP or HUD to DA. Simultaneous approach authorized with Rwy 19L.**

MALS  MISSED APPROACH: Climb to 3500 then right turn direct ICT VORTAC and hold.

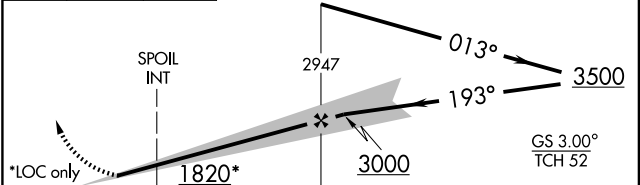
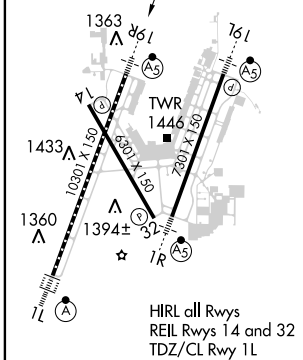
ATIS 125.15	WICHITA APP CON 126.7 353.5	WICHITA TOWER 118.2 257.8	GND CON 121.9 348.6	CLNC DEL 125.7
-----------------------	---------------------------------------	-------------------------------------	-------------------------------	--------------------------



NC-2, 31 MAY 2012 to 28 JUN 2012

NC-2, 31 MAY 2012 to 28 JUN 2012

ELEV 1333	TDZE 1330	3500	↑	↪	ICT
-----------	-----------	------	---	---	-----



CATEGORY	A	B	C	D	E
S-ILS 19R	** 1530/24 200 (200-½)				
S-LOC 19R	1820/24	490 (500-½)	1820/40 490 (500-¾)	1820/50 490 (500-1)	1820/60 490 (500-1½)
CIRCLING	1820-1	487 (500-1)	1820-1½ 487 (500-1½)	1900-2 567 (600-2)	1980-2½ 647 (700-2½)
SPOIL INT MINIMUMS					
S-LOC 19R	1660/24 330 (400-½)		1660/40 330 (400-¾)		
CIRCLING	1800-1	467 (500-1)	1800-1½ 467 (500-1½)	1900-2 567 (600-2)	1980-2½ 647 (700-2½)

FAF to MAP 4.8 NM					
Knots	60	90	120	150	180
Min:Sec	4:48	3:12	2:24	1:55	1:36