

APP CRS	Rwy Idg	<b>9402</b>
<b>087°</b>	TDZE	<b>96</b>
	Apt Elev	<b>96</b>

# RNAV (RNP) Y RWY 8R

## GEORGE BUSH INTERCONTINENTAL/HOUSTON (IAH)

▼ For uncompensated Baro-VNAV systems, procedure NA below -3°C (27°F) or above 54°C (130°F). GPS Required. For inop MALSR increase RNP 0.13 all Cats visibility to RVR 4500, increase RNP 0.14 all Cats visibility to RVR 5600, increase RNP 0.30 all Cats visibility to 1 ¼ mile. Simultaneous approach authorized with Rwy 8L and Rwy 9. Use of FD or AP or HUD providing RNAV track guidance required during simultaneous operations.

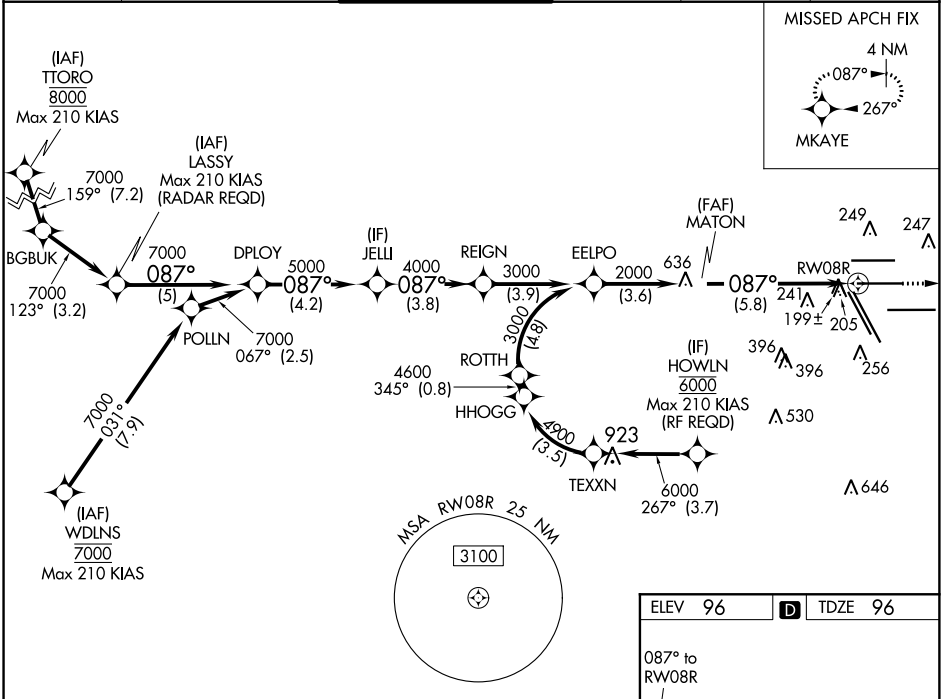
MALSR



MISSED APPROACH:  
Climb to 3000 on track  
087° to MKAYE and hold.

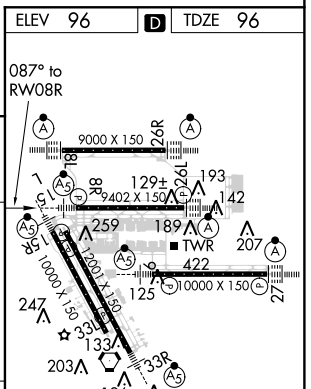
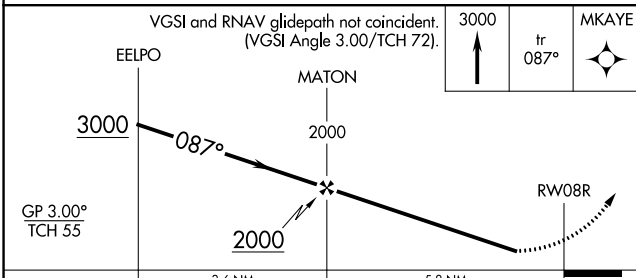
D-ATIS <b>124.05</b>	HOUSTON APP CON <b>120.05 379.1 EAST</b> <b>124.35 316.15 WEST</b>	HOUSTON TOWER <b>125.35 290.2</b>	GND CON <b>118.575</b>	CLNC DEL <b>128.1</b>	CPDLC
-------------------------	--	--------------------------------------	---------------------------	--------------------------	-------

MISSED APCH FIX



SC-5, 14 SEP 2017 to 12 OCT 2017

SC-5, 14 SEP 2017 to 12 OCT 2017



CATEGORY	A	B	C	D
RNP 0.13 DA		384/40	288 (300-¾)	
RNP 0.14 DA		442/40	346 (400-¾)	
RNP 0.30 DA		493/42	397 (400-¾)	

### AUTHORIZATION REQUIRED

TDZ/CL Rwsy 8R, 8L, 15R, 26R, 26L,  
27 and 33L  
HIRL all Rwsy