

WAAS CH 53626 W08B	APP CRS 087°	Rwy Idg TDZE 96 Apt Elev 96	9402
--	------------------------	---	-------------

RNAV (GPS) Z RWY 8R

GEORGE BUSH INTERCONTINENTAL/HOUSTON (IAH)

▼ For uncompensated Baro-VNAV systems, LNAV/VNAV NA below -3°C (27°F) or above 54°C (130°F). For inop MALS/R, increase LPV Cat E visibility to RVR 4000, LNAV/VNAV all Cats visibility to RVR 6000, and LNAV Cat C/D/E visibility to 1 $\frac{3}{8}$. Simultaneous approach authorized with Rwy 8L and Rwy 9. DME/DME RNP-0.3 NA. Use of FD or AP providing RNAV track guidance required during simultaneous operations. LNAV procedure NA during simultaneous operations.

MALS/R MISSED APPROACH: Climb to 3000 direct MKAYE and hold.

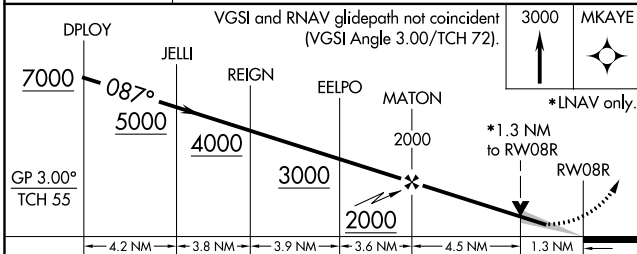
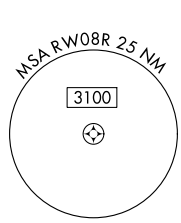
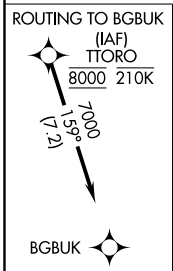
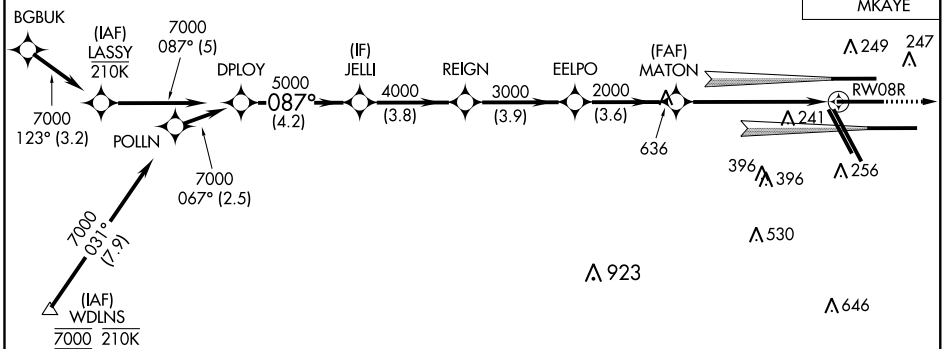
D-ATIS 124.05	HOUSTON APP CON 120.05 379.1 EAST 124.35 316.15 WEST	HOUSTON TOWER 125.35 290.2	GND CON 118.575	CLNC DEL 128.1	CPDLC
-------------------------	--	--------------------------------------	---------------------------	--------------------------	-------

SEE INSET FOR ROUTING TO BGBK

RADAR REQUIRED

MISSED APCH FIX 4 NM

MKAYE



ELEV 96	D TDZE 96
---------	------------------

HIRL all Rwys
TDZ/CL Rwys 8L/R, 15R, 26L/26R, 27 and 33L

CATEGORY	A	B	C	D	E
LPV DA	296/18		200 (200- $\frac{1}{2}$)		
LNAV/VNAV DA	421/32		325 (400- $\frac{5}{8}$)		
LNAV MDA	580/24	484 (500- $\frac{1}{2}$)	580/50	484 (500-1)	

SC-5, 17 AUG 2017 to 14 SEP 2017

SC-5, 17 AUG 2017 to 14 SEP 2017