

WAAS CH 57902 W33A	APP CRS 329°	Rwy 33R Rwy ldg 12001 TDZE 89 Apt Elev 96	Rwy 33L Rwy ldg 10000 TDZE 90 Apt Elev 96
--	------------------------	---	---

RNAV (GPS) RWY 33R

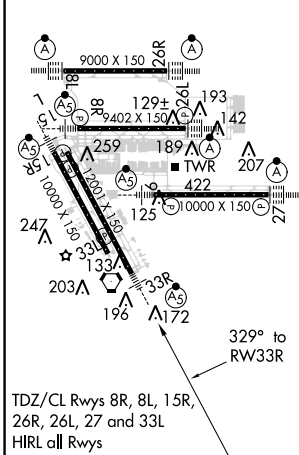
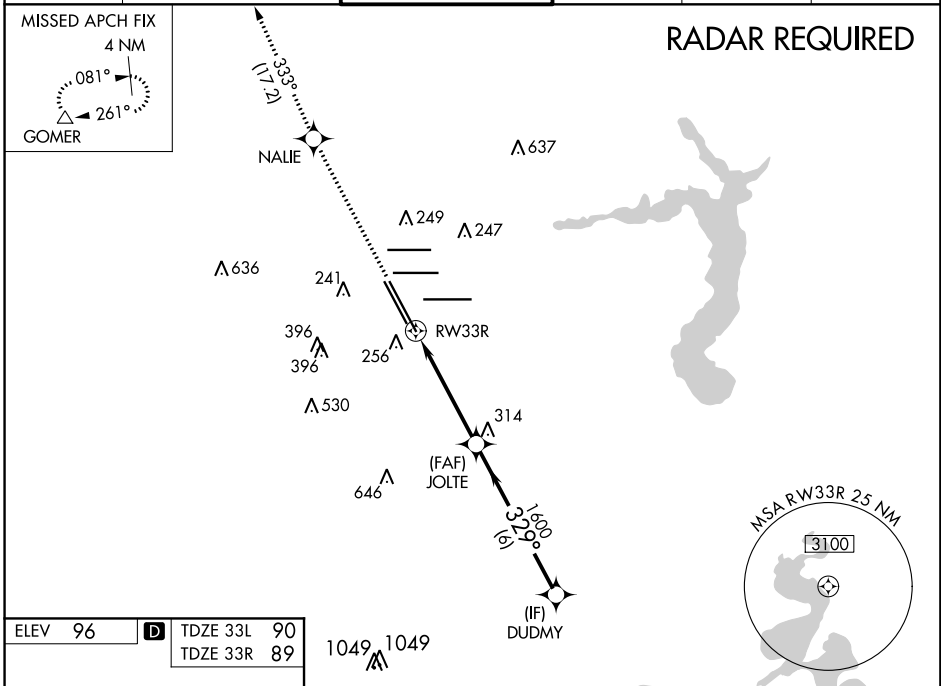
GEORGE BUSH
INTERCONTINENTAL/HOUSTON (IAH)

▼ For uncompensated Baro-VNAV systems, LNAV/VNAV NA below -3°C (27°F) or above 54°C (130°F). For inop MALSR, increase LPV Cat E visibility to RVR 4000, LNAV/VNAV Cat E visibility to 1 3/8, and LNAV Cat E visibility to 1 3/8. DME/DME RNP-0.3 NA.

MALSR 

MISSED APPROACH: Climb to 2000 direct NALIE and on track 333° GOMER and hold.

D-ATIS 124.05	HOUSTON APP CON 120.05 379.1 EAST 124.35 316.15 WEST	HOUSTON TOWER 127.3 288.25	GND CON 121.7	CLNC DEL 128.1	CPDLC
-------------------------	--	--------------------------------------	-------------------------	--------------------------	-------



2000	NALIE	tr 333°	GOMER	DUDMY
*LNAV only.				
RW33R		*1.3 NM to RW33R		JOLTE 1600
1.3 NM		3.3 NM		6 NM
A		B		C
LPV DA		289/24		200 (200-1/2)
LNAV/VNAV DA		490/45		401 (400-7/8)
LNAV MDA		540/24 451 (500-1/2)		540/45 451 (500-7/8)
SIDESTEP 33L		540-1 450 (500-1)		540-1 1/2 450 (500-1 1/2) 540-2 450 (500-2) NA

GP 3.00°
TCH 49