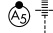


# ILS or LOC RWY 33R

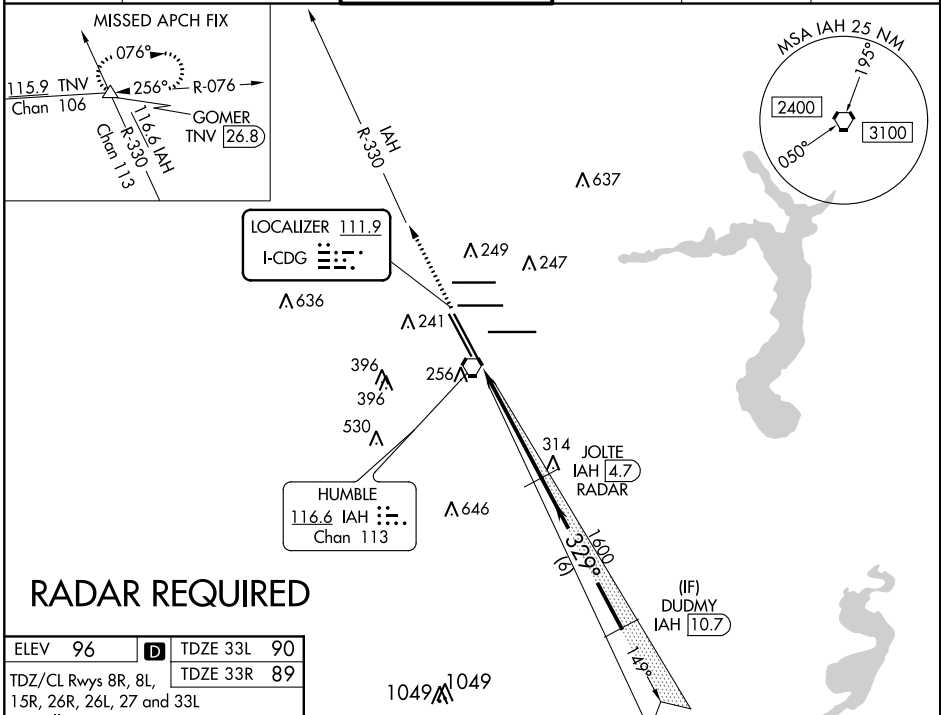
GEORGE BUSH INTERCONTINENTAL/HOUSTON (IAH)

LOC I-CDG <b>111.9</b>	APP CRS <b>329°</b>	Rwy 33R Idg <b>12001</b> TDZE <b>89</b> Apt Elev <b>96</b>	Rwy 33L Idg <b>10000</b> TDZE <b>90</b> Apt Elev <b>96</b>
---------------------------	------------------------	--	--

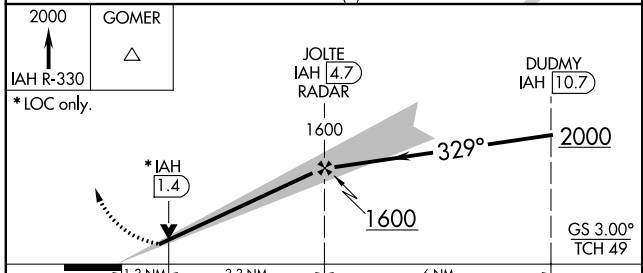
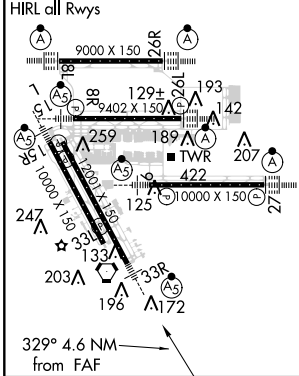
**▼** DME from IAH VORTAC. Simultaneous reception of I-CDG and IAH DME Required. For inop MALSRL, increase S-ILS 33R Cat E visibility to RVR 4000 and S-LOC 33R Cat E visibility to 1/2. DME or RADAR Required. #RVR 1800 authorized with the use of FD or AP or HUD to DA.

MALSRL  MISSED APPROACH: Climb to 2000 on IAH VORTAC R-330 to GOMER INT/TNV 26.8 DME and hold.

D-ATIS <b>124.05</b>	HOUSTON APP CON <b>120.05 379.1</b> EAST <b>124.35 316.15</b> WEST	HOUSTON TOWER <b>127.3 288.25</b>	GND CON <b>121.7</b>	CLNC DEL <b>128.1</b>	CPDLC
-------------------------	--	--------------------------------------	-------------------------	--------------------------	-------



ELEV 96	<b>D</b>	TDZE 33L 90
TDZ/CL Rws 8R, 8L, 15R, 26R, 26L, 27 and 33L		TDZE 33R 89
HIRL all Rws		



CATEGORY	A	B	C	D	E
S-ILS 33R	# 289/24 200 (200-1/2)				
S-LOC 33R	540/24 451 (500-1/2)	540/45 451 (500-7/8)			
SIDESTEP Rwy 33L	540-1 450 (500-1)	540-1 1/2 450 (500-1 1/2)	540-2 450 (500-2)	NA	

SC-5, 14 SEP 2017 to 12 OCT 2017

SC-5, 14 SEP 2017 to 12 OCT 2017