

LAAS	APP CRS	Rwy Idg	10000
CH 22306	267°	TDZE	87
RPI GGHI		Apt Elev	96

GLS RWY 27

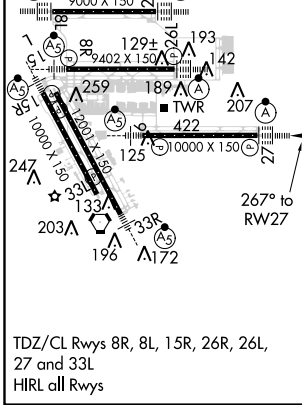
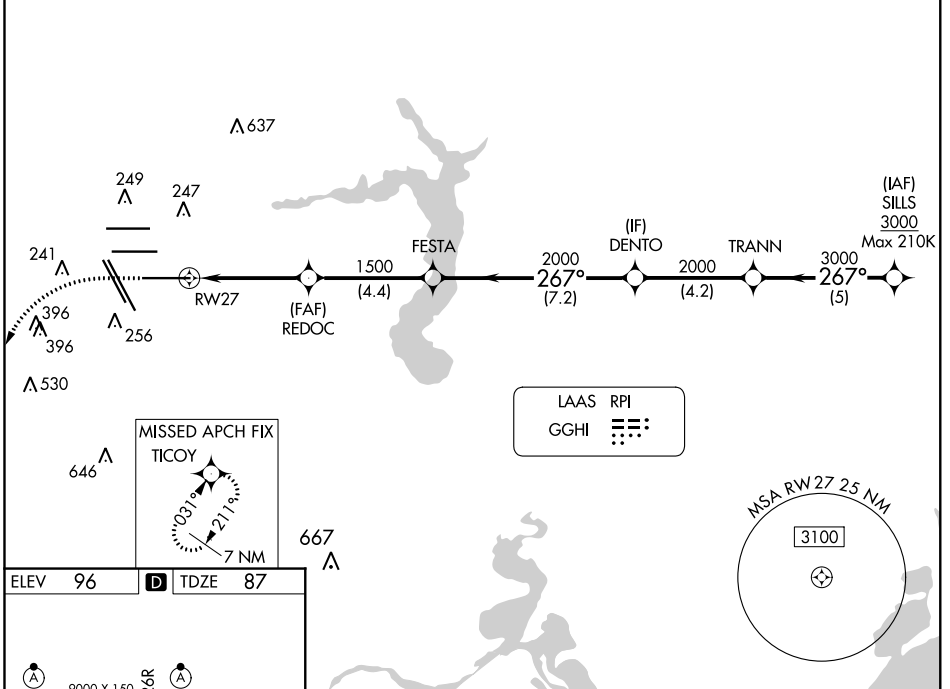
GEORGE BUSH INTERCONTINENTAL/HOUSTON (IAH)

NA For inop ALSF, increase GLS all Cats visibility to RVR 4000. Simultaneous approach authorized with Rwy 26L and Rwy 26R. DME/DME RNP-0.3 NA. GPS required. Use of FD or AP providing RNAV track guidance required during simultaneous operations. Autoland approach NA.

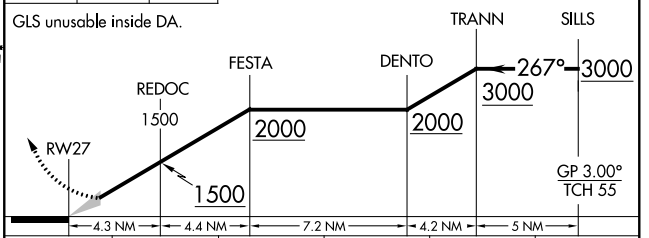
ALSF-2 MISSED APPROACH: Climb to 560 then climbing left turn to 3100 direct TICOY and hold.

D-ATIS 124.05	HOUSTON APP CON 120.05 379.1 EAST 124.35 316.15 WEST	HOUSTON TOWER 135.15 290.2	GND CON 118.575	CLNC DEL 128.1	CPDLC
-------------------------	--	--------------------------------------	---------------------------	--------------------------	-------

RADAR REQUIRED



560 3100 TICOY
 VGSI and GLS glidepath not coincident (VGSI Angle 3.00/TCH 70).



CATEGORY	A	B	C	D	E
GLS DA	287/24 200 (200-1/2)				

SC-5, 09 NOV 2017 to 07 DEC 2017

SC-5, 09 NOV 2017 to 07 DEC 2017