

TACAN IAG Chan <b>47</b>	APP CRS <b>286°</b>	Rwy Idg TDZE Apt Elev	<b>9129</b> <b>588</b> <b>592</b>
-----------------------------	------------------------	-----------------------------	---

# TACAN RWY 28R

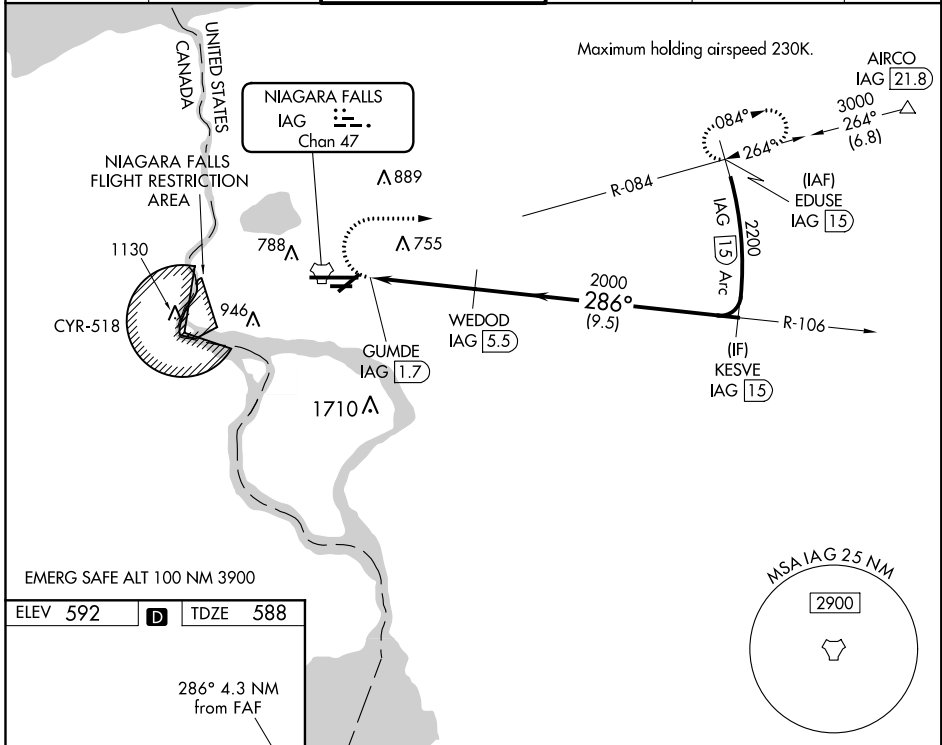
NIAGARA FALLS INTL (IAG)

⚠ When local altimeter setting not received, use Buffalo Niagara Intl altimeter setting and increase all MDA 60 feet; increase S-28R visibility for Cat C/D/E to RVR 4500 and Circling Cat D/E visibility ¼ mile. Circling NA for Cat E south of Rwy 10L-28R. For inop MALSRL, increase S-28R Cat A/B visibility to RVR 5000 and Cat C/D/E to RVR 6000. Rwy 28R helicopter visibility reduction below ¾ SM NA. Rwy 6, 10R, 24, 28L helicopter visibility reduction 1 SM NA. Circling Rwy 6, 10R, 24, 28L NA at night.

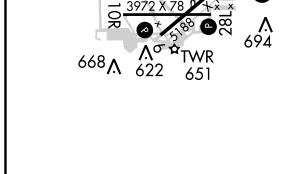
MALSRL

MISSED APPROACH:  
Climbing right turn to 3000 on heading 100° and IAG R-084 to EDUSE/IAG 15 DME and hold.

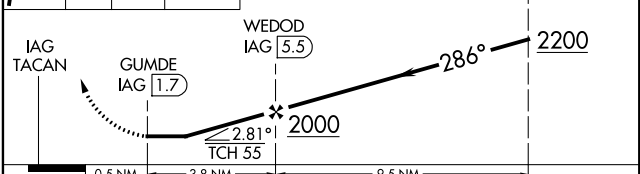
ATIS <b>120.8 269.4</b>	BUFFALO APP CON <b>126.5 317.6</b>	NIAGARA TOWER★ <b>118.5 (CTAF) 349.0</b>	GND CON <b>121.7 275.8</b>	CLNC DEL <b>119.25 251.1</b>	UNICOM <b>122.95</b>
----------------------------	---------------------------------------	---	-------------------------------	---------------------------------	-------------------------



ELEV <b>592</b>	<b>D</b>	TDZE <b>588</b>
-----------------	----------	-----------------



3000	hdg 100°	IAG R-084	EDUSE IAG [15]	VGSI and descent angles not coincident (VGSI Angle 2.50/TCH 67).	KESVE IAG [15]
------	----------	-----------	----------------	--	----------------



CATEGORY	A	B	C	D	E
S-28R	1000/40 412 (500-¾)				
CIRCLING	1100-1 508 (600-1)	1100-1½ 508 (600-1½)	1360-2½ 768 (800-2½)	1360-2¾ 768 (800-2¾)	

NE-2, 22 JUN 2017 to 20 JUL 2017

NE-2, 22 JUN 2017 to 20 JUL 2017