

WAAS CH 45532 W24A	APP CRS 240°	Rwy ldg 5108 THRE 592 Apt Elev 592
--	------------------------	--

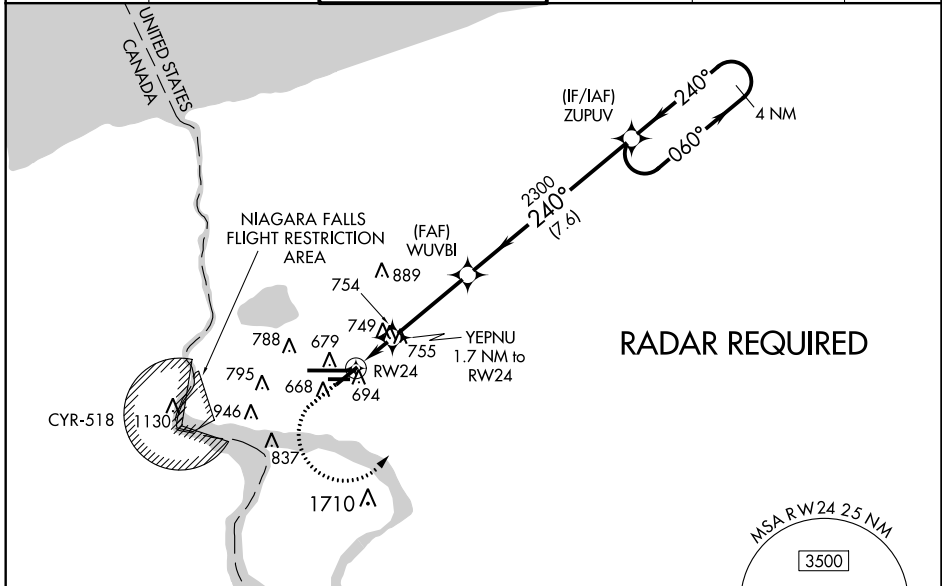
RNAV (GPS) Z RWY 24

NIAGARA FALLS INTL (IAG)

⚠ DME/DME RNP-0.3 NA. When local altimeter setting not received, use Buffalo Niagara Intl altimeter setting and increase all MDA 60 feet and increase LP Cats C and D visibility 1/4 mile, LNAV Cats C and D visibility 1/8 mile, and Circling Cat D visibility 1/4 mile. Rwy 24 Straight-in and Circling and Circling to Rwy 10R/6 NA at night. Helicopter visibility reduction below 1SM NA. * Missed approach requires a minimum climb of 265 feet per NM to 2120; if unable to meet climb gradient, see RNAV (GPS) Y RWY 24.

MISSED APPROACH: Climb to 1400 then climbing left turn to 3600 direct ZUPUV and hold.

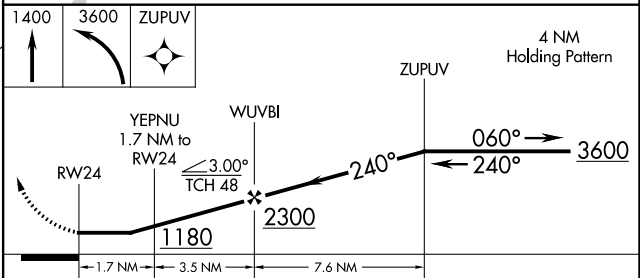
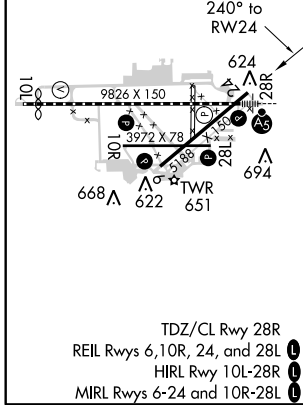
ATIS 120.8 269.4	BUFFALO APP CON 126.5 317.6	NIAGARA TOWER* 118.5 (CTAF) 0 349.0	GND CON 121.7 275.8	CLNC DEL 119.25 251.1	UNICOM 122.95
----------------------------	---------------------------------------	---	-------------------------------	---------------------------------	-------------------------



NE-2. 27 APR 2017 to 25 MAY 2017

NE-2. 27 APR 2017 to 25 MAY 2017

ELEV 592	D	THRE 592
----------	----------	----------



CATEGORY	A	B	C	D
LP MDA*	1000-1	408 (500-1)	1000-1 1/8	408 (500-1 1/8)
LNAV MDA*	1020-1	428 (500-1)	1020-1 1/4	428 (500-1 1/4)
CIRCLING	1100-1	508 (600-1)	1100-1 1/2 508 (600-1 1/2)	1360-2 1/2 768 (800-2 1/2)