

WAAS CH 90132 W06A	APP CRS 060°	Rwy ldg THRE 584 Apt Elev 592
---------------------------------	------------------------	--

RNAV (GPS) RWY 6

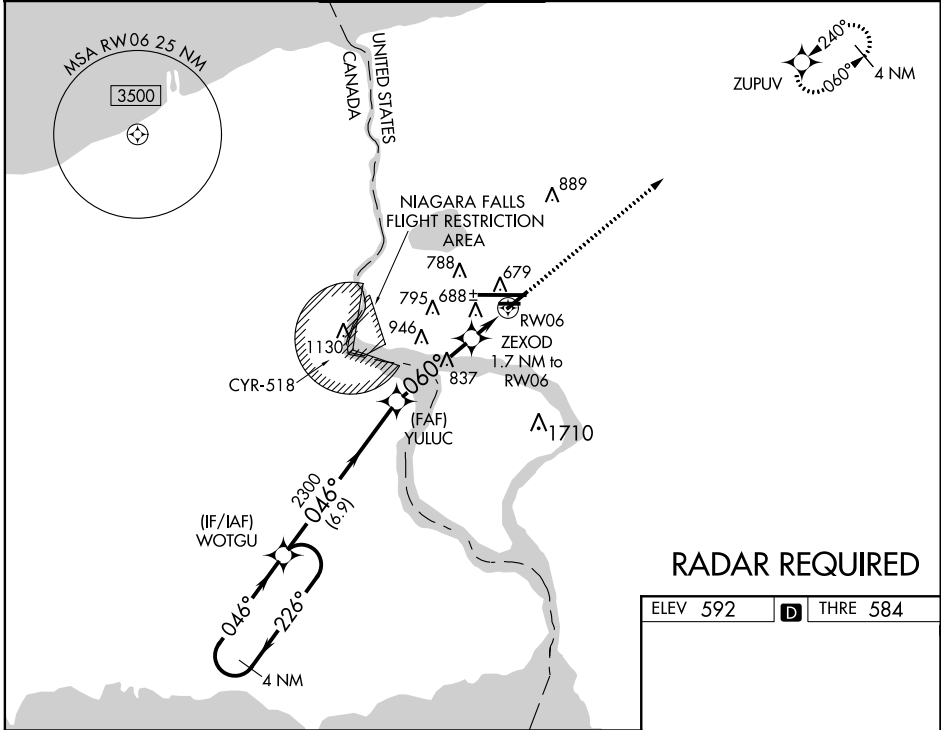
NIAGARA FALLS INTL (IAG)

▼ Baro-VNAV NA when using Buffalo Niagara Intl altimeter setting. For uncompensated Baro-VNAV systems, LNAV/VNAV NA below -18°C (0°F) or above 54°C (130°F). DME/DME RNP-0.3 NA.

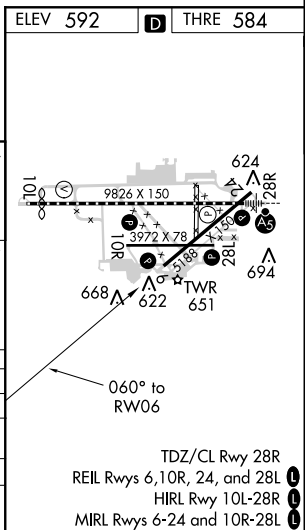
▲ Rwy 6 Straight-in and Circling and Circling to Rwy 10R/24 NA at night. Helicopter visibility reduction below 1 SM NA. When local altimeter setting not received, use Buffalo Niagara Intl altimeter setting and increase all DA 51 feet and all MDA 60 feet, increase LNAV Cat C/D visibility 1/8 mile and Circling Cat D 1/4 mile.

MISSED APPROACH: Climb to 3600 direct ZUPUV and hold.

ATIS 120.8 269.4	BUFFALO APP CON 126.5 317.6	NIAGARA TOWER★ 118.5 (CTAF) 0 349.0	GND CON 121.7 275.8	CLNC DEL 119.25 251.1	UNICOM 122.95
----------------------------	---------------------------------------	---	-------------------------------	---------------------------------	-------------------------



RADAR REQUIRED



4 NM Holding Pattern	VGSI and RNAV glidepath not coincident (VGSI Angle 3.00/TCH 45).			3600 ZUPUV
GP 3.00° TCH 55	WOTGU	YULUC	ZEXOD	RW06
3300	2300	1180	1180	
← 226°	← 046°	← 060°	← 060°	
046°	046°	060°	060°	
6.9 NM	3.5 NM	1.7 NM	1.7 NM	
CATEGORY	A	B	C	D
LPV DA		862-1	278 (300-1)	
LNAV/VNAV DA		847-1	263 (300-1)	
LNAV MDA		940-1	356 (400-1)	
CIRCLING	1100-1	508 (600-1)	1100-1½ 508 (600-1½)	1360-2½ 768 (800-2½)

NE-2. 27 APR 2017 to 25 MAY 2017

NE-2. 27 APR 2017 to 25 MAY 2017

TDZ/CL Rwy 28R
REIL Rwy 6, 10R, 24, and 28L
HIRL Rwy 10L-28R
MRL Rwy 6-24 and 10R-28L